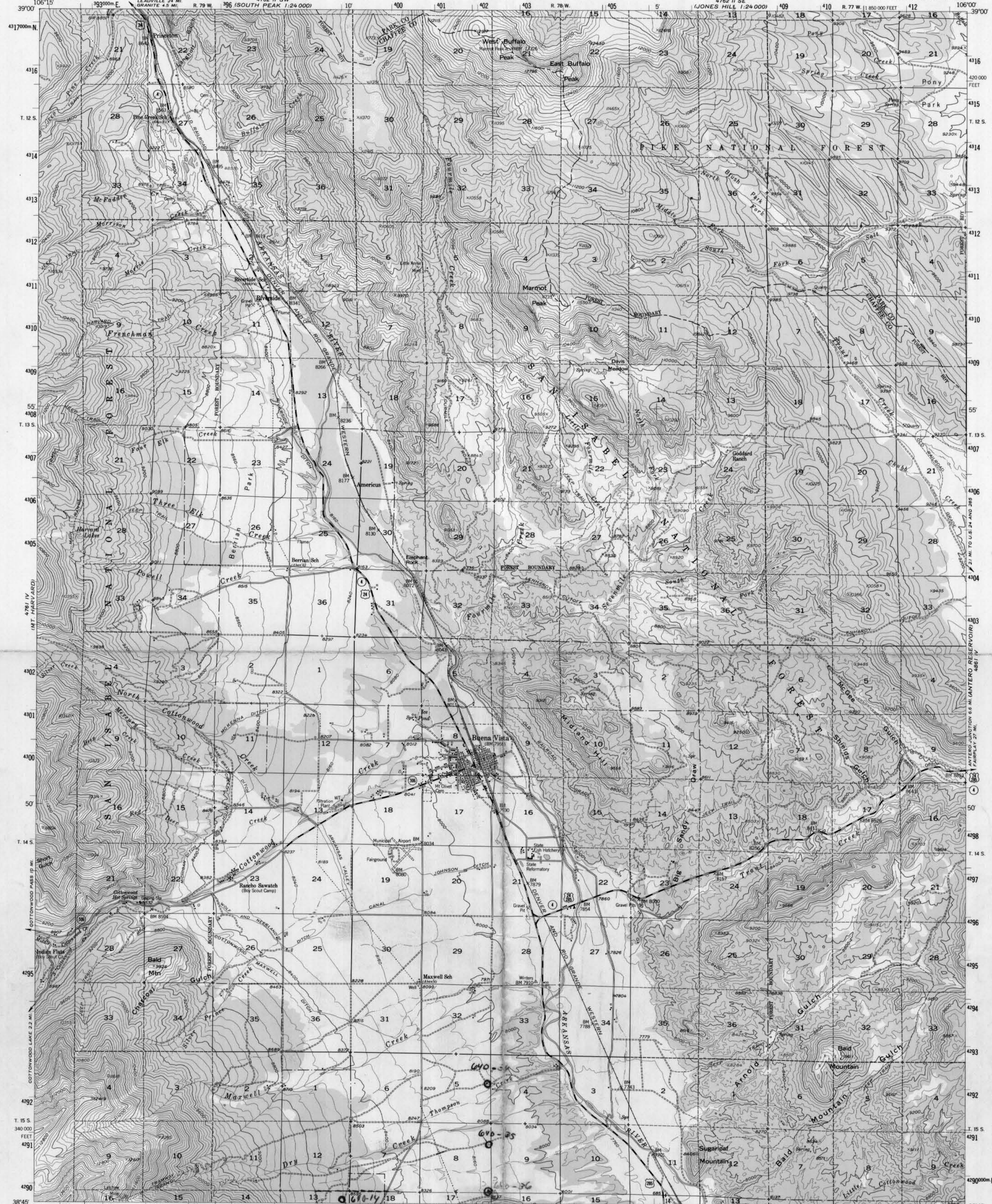


UNT. ELBERT

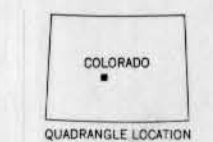
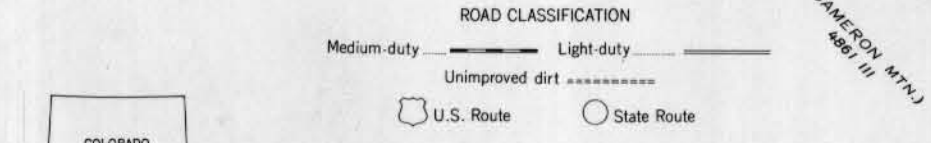
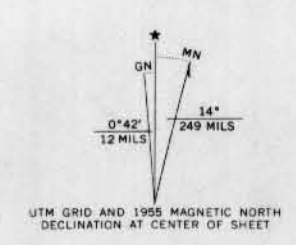
UNITED STATES
DEPARTMENT OF THE INTERIOR
GEOLOGICAL SURVEY

BUENA VISTA QUADRANGLE
COLORADO
15 MINUTE SERIES (TOPOGRAPHIC)

4861 1 BY
ROAD 1:24,000



Mapped, edited, and published by the Geological Survey
Control by USGS and USC&GS
Topography from aerial photographs by photogrammetric methods
Aerial photographs taken 1953. Field check 1955
Polyconic projection, 1927 North American datum
10,000-foot grid based on Colorado coordinate system,
central zone
Dashed land lines indicate approximate locations
Certain land lines are omitted in T. 12, 13, 14, and 15S-R. 79 W.
because of insufficient data
Unchecked elevations are shown in brown
1000-meter Universal Transverse Mercator grid ticks,
zone 13, shown in blue



THIS MAP COMPLIES WITH NATIONAL MAP ACCURACY STANDARDS
FOR SALE BY U.S. GEOLOGICAL SURVEY, DENVER, COLORADO 80225 OR WASHINGTON, D. C. 20242
A FOLDER DESCRIBING TOPOGRAPHIC MAPS AND SYMBOLS IS AVAILABLE ON REQUEST

BUENA VISTA, COLO.
N3845-W10600/15
1955
AMS 4761 1-SERIES V777

(GARFIELD)
4861 III

(CAMERON MOUNTAIN)
4861 III