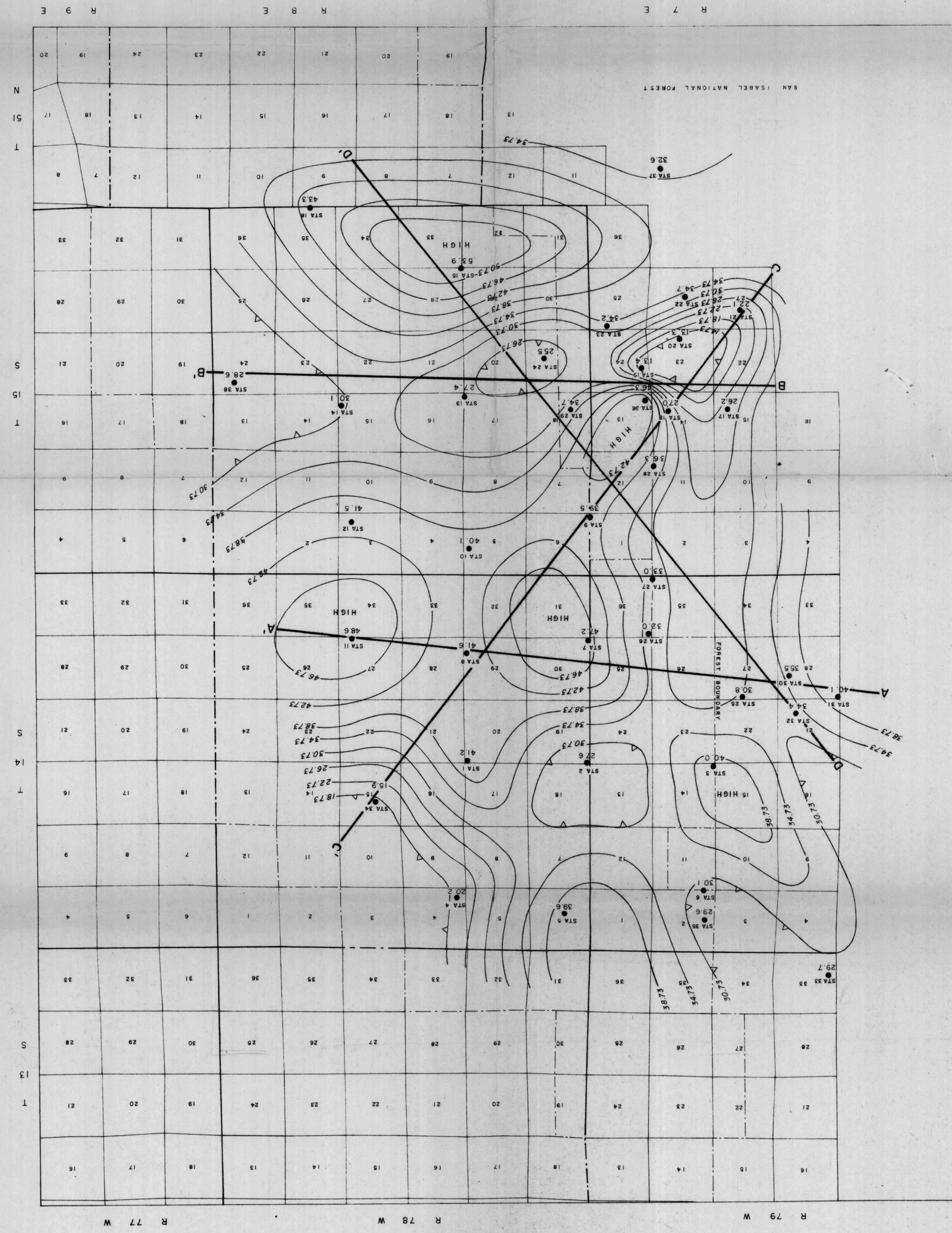


AMAX
AREA: MT. PRINCETON
COUNTY: CHAFFEE
STATE: COLORADO
INTEGRATED POWER
DATE: OF ACQUISITION
MARCH 31 - APRIL 6, 1974
CONTOUR INTERVAL: 4 FEET
MILES



R 79 W
R 78 W
R 77 W

FIGURE 1
H 7 E
H 9 E