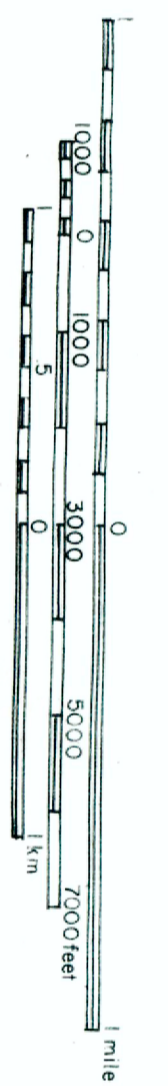
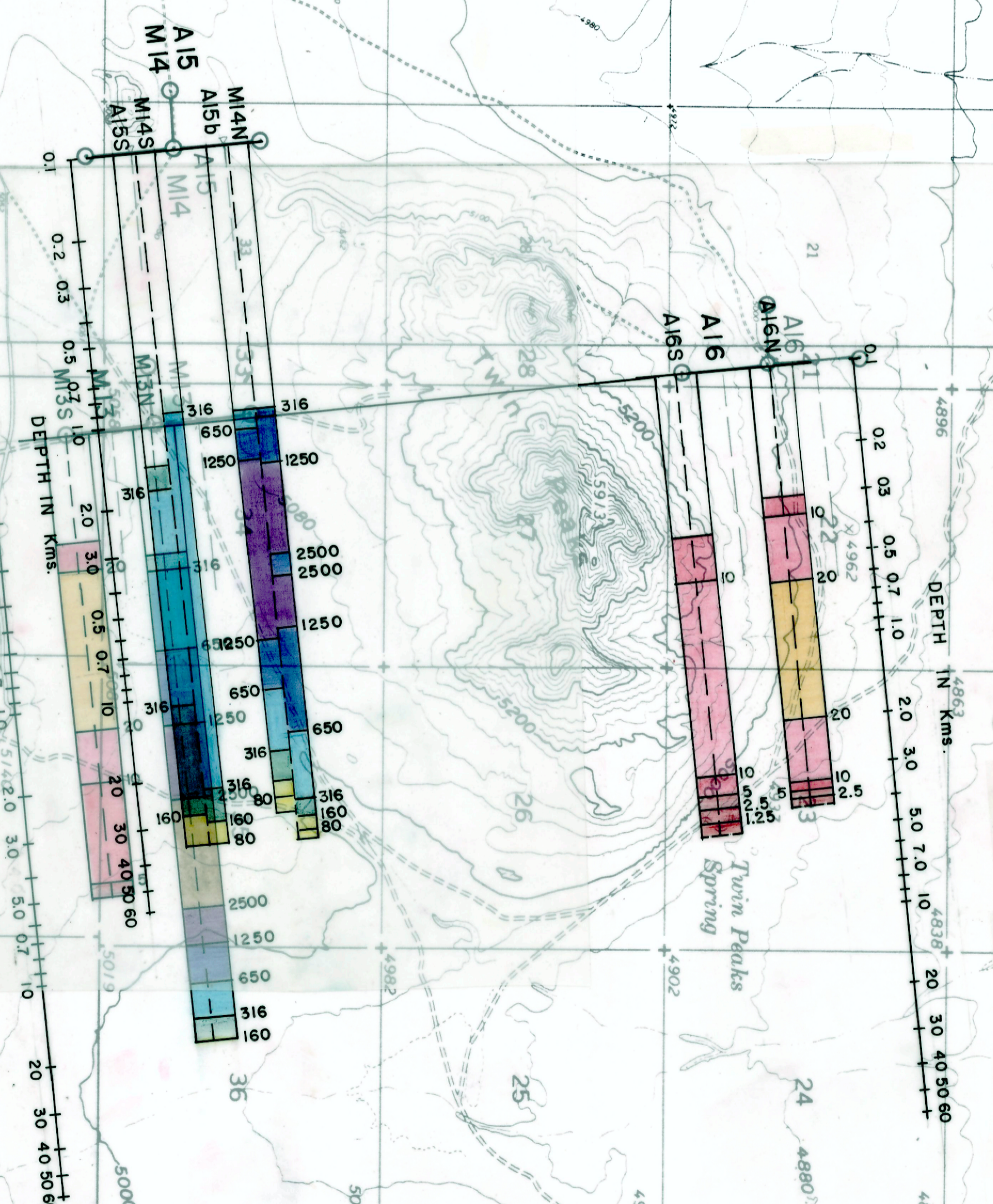
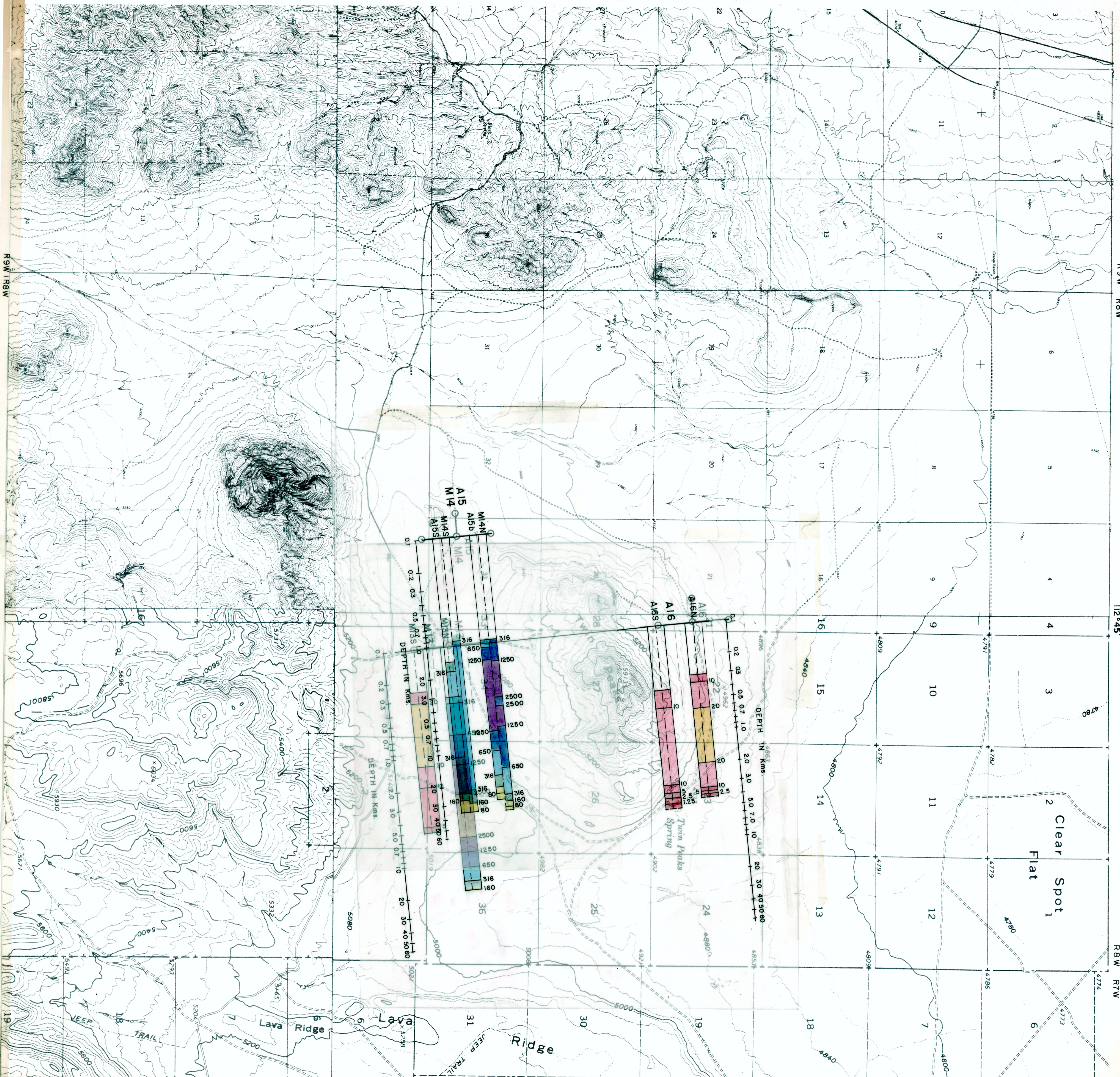


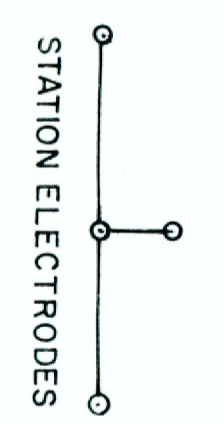
T23S
38°45'
T24S

T23S
38°45'
T24S



SCALE 1:24000

112°45'



AMAX EXPLORATION, INC.
DENVER, COLORADO

TWIN PEAKS AREA (EAST)
UTAH
MAGNETOTELLURIC SURVEY
TE MODE
RESISTIVITY(lam) vs. DEPTH(kms)
by continuous inversion method

T26S