



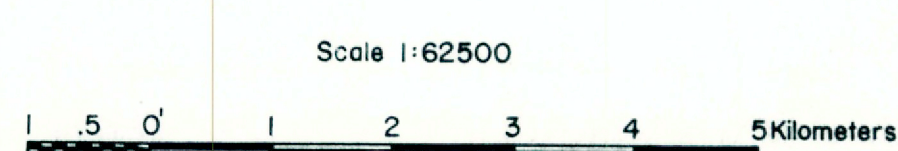
VPI SURVEY - 18-30 JUNE 1973

SENTURION SURVEY - NOV 1973

Alternate solutions for foci of Nov. 13 0256 event, using model of linear increase of velocity with depth.

● Zones of seismicity for P-velocities 5 and 6 km/sec  
 ▲ Seismograph and number of recording days

□ Seismograph  
 Hypocenters with gradient and focal depths (km)  
 ● SP = 4 sec.  
 ○ SP = 3 sec.  
 Yellow shaded area: Most probable source area



AMAX EXPLORATION, INC. DENVER, COLORADO

Virginia Geothermal Area  
Microearthquake Surveys

Approximate Mean Declination, 1946