

GROUND NOISE REPORT

For GEOTHERMAL POWER CORPORATION of CALIFORNIA

by GRESHAM GEOPHYSICAL CORPORATION of ARIZONA

LIST OF CONTENTS

	PAGE.
REPORT AND RECOMENDATIONS	1-3
LIST OF EQUIPMENT USED	4
FIELD NOTES	5
COMPUTER PLOTS	6-7
LIST OF DATA	8
LIST OF SEISMIC EVENTS	9
SURVEY STATIONS	FIGURE 1
NATURAL AND CULTURAL NOISE	''' 2
TOTAL GROUND NOISE AMPLITUDE	''' 3
FIRST DOMINANT FREQUENCY	''' 4
STRUCTURAL INFERENCES	''' 5
ADVICE MAP	''' 6

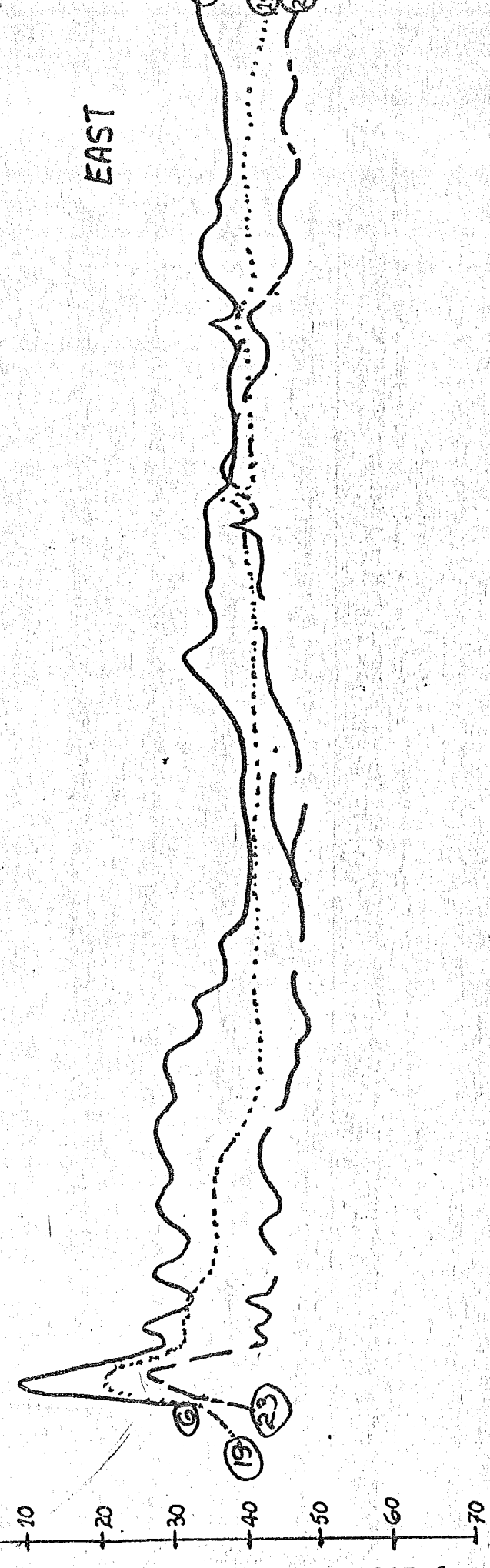
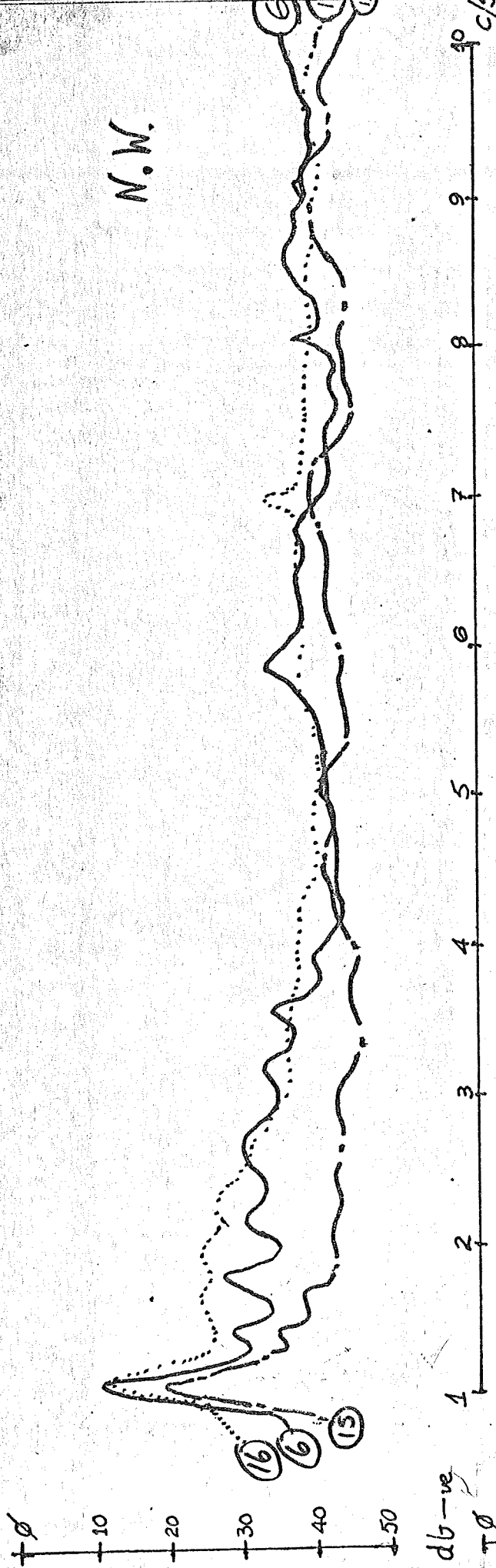
GROUND NOISE REPORT

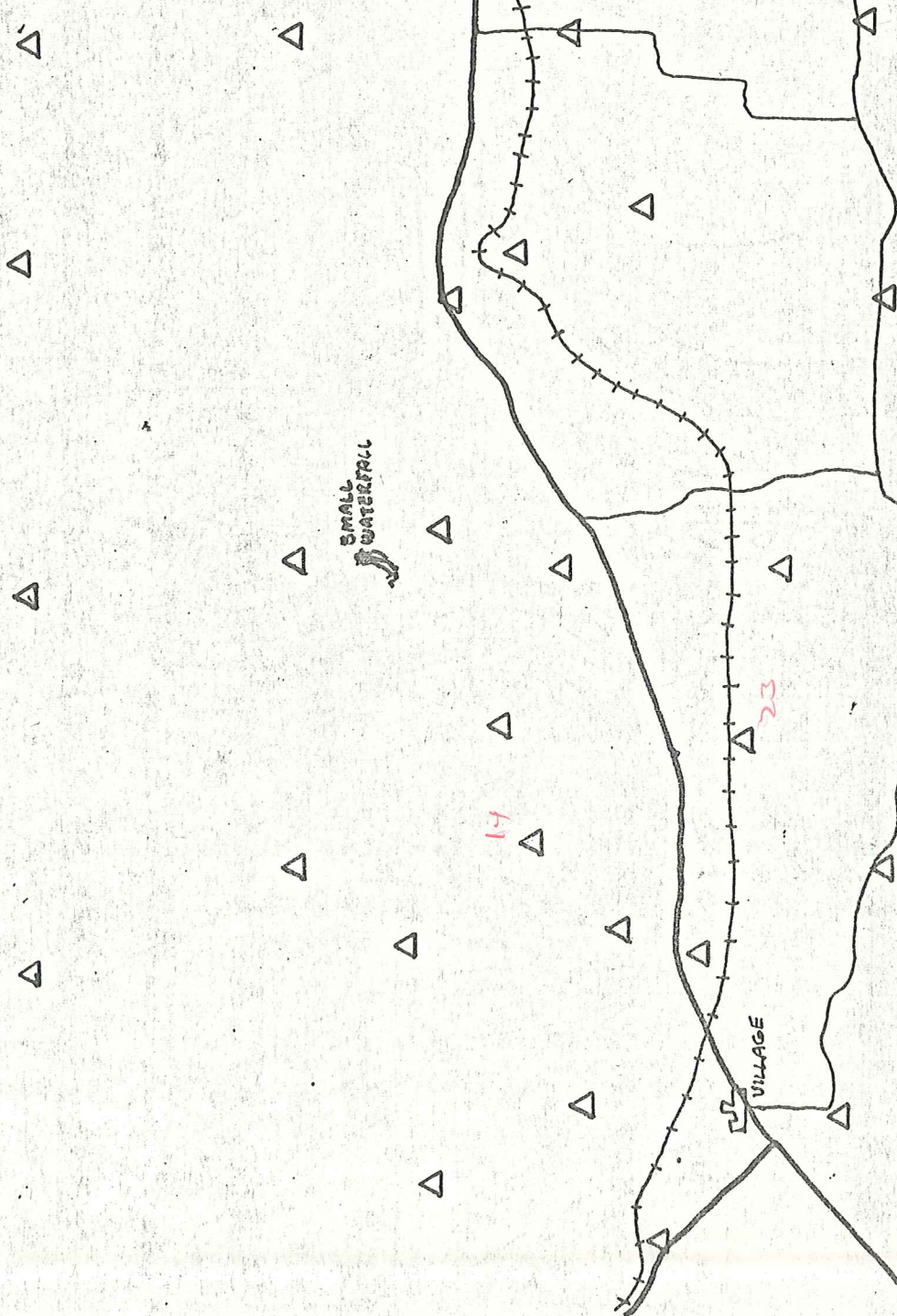
For GEOTHERMAL POWER CORPORATION of CALIFORNIA

by GRESHAM GEOPHYSICAL CORPORATION of ARIZONA

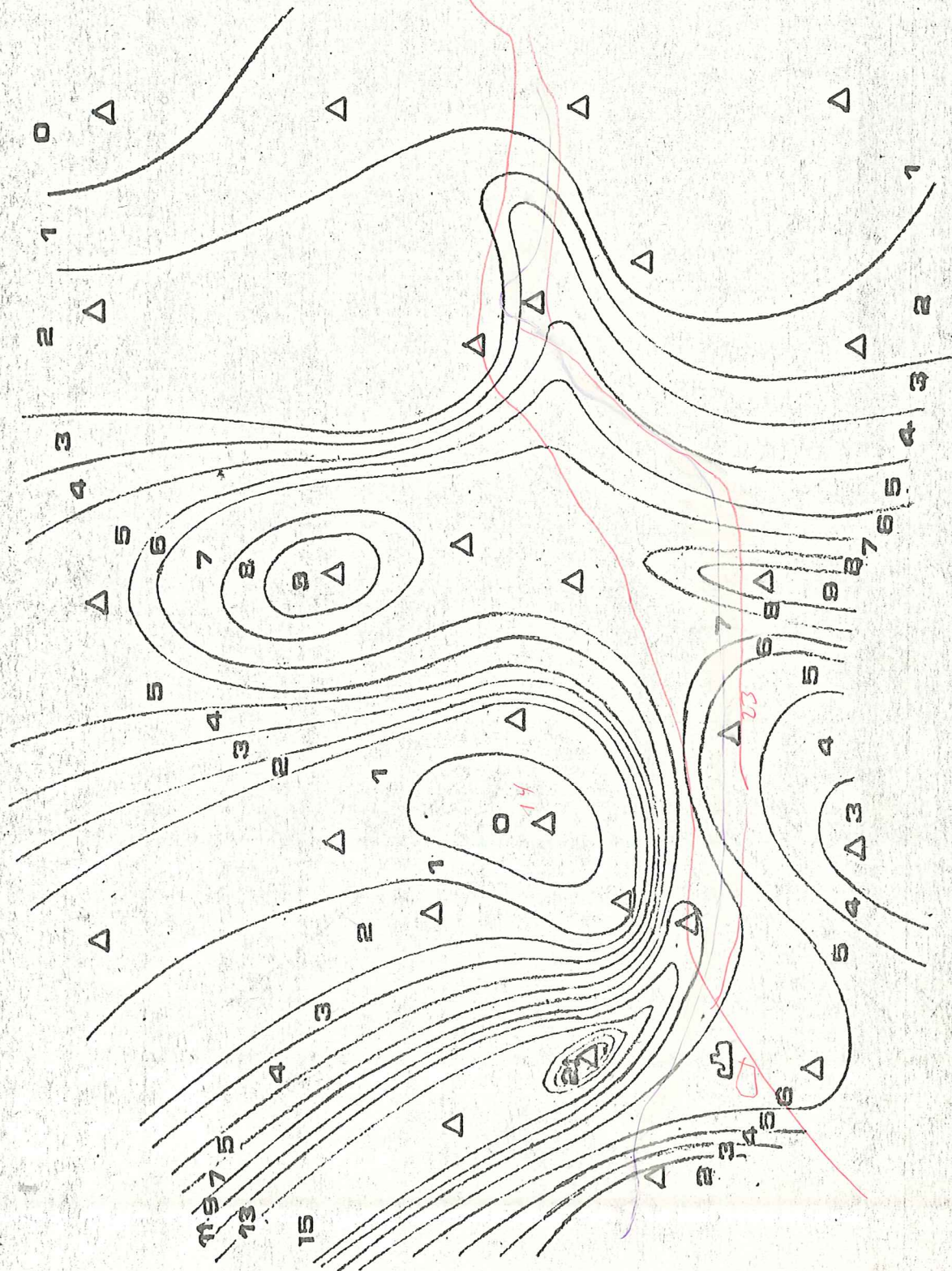
FIELD NOTES-----

STATION	INST:	ON	DATE	OFF	DATE	NOTE	SET
1	A1	1600	8 AUG	0750	9 AUG	MAIN RD.	2
2	B2	1520	4 AUG	1030	5 AUG	LAKE AREA	2
3	A1	1550	4 AUG	1115	5 AUG	LAKE AREA	2
4	C3	1730	25 JUL	1140	26 JUL		2
5	A1	1850	26 JUL	1215	27 JUL	SWAMP	2
6	A1	1600	29 JUL	1110	30 JUL		2
7	B2	1910	29 JUL	1015	30 JUL		2
8	A1	1145	1 AUG	1145	2 AUG		2
9	B2	1255	1 AUG	1015	2 AUG	WATERFALL	2
10	B2	1630	5 AUG	0830	6 AUG		2
11	A1	1700	5 AUG	0850	6 AUG		2
12	A1	1600	6 AUG	1000	7 AUG		2
13	A1	1615	25 JUL	1230	26 JUL	Near Rd	2
14	B2	1705	27 JUL	1125	28 JUL		2
15	A1	1110	31 JUL	1055	1 AUG		2
16	A1	1150	30 JUL	1010	31 JUL		2
17	B2	1225	30 JUL	1140	31 JUL		2
18	B2	1755	28 JUL	1010	29 JUL		2
19	A1	1715	28 JUL	0945	29 JUL		2
20	A1	1455	7 AUG	0950	8 AUG	SIDE RD	2
21	B2	1515	7 AUG	1005	8 AUG	SIDE RD	2
22	A1	1200	2 AUG	1000	3 AUG		2
23	B2	1210	31 JUL	1210	1 AUG	NR RAIL	2
24	B2	1050	2 AUG	0930	3 AUG		2
25	B2	1515	6 AUG	1015	7 AUG		2
26	B2	1030	3 AUG	1005	4 AUG		2
27	A1	1110	3 AUG	1020	4 AUG	MAIN RD.	2





- MAJOR ROAD
- MINOR ROAD
- RAILROAD
- △ SURVEY STATION

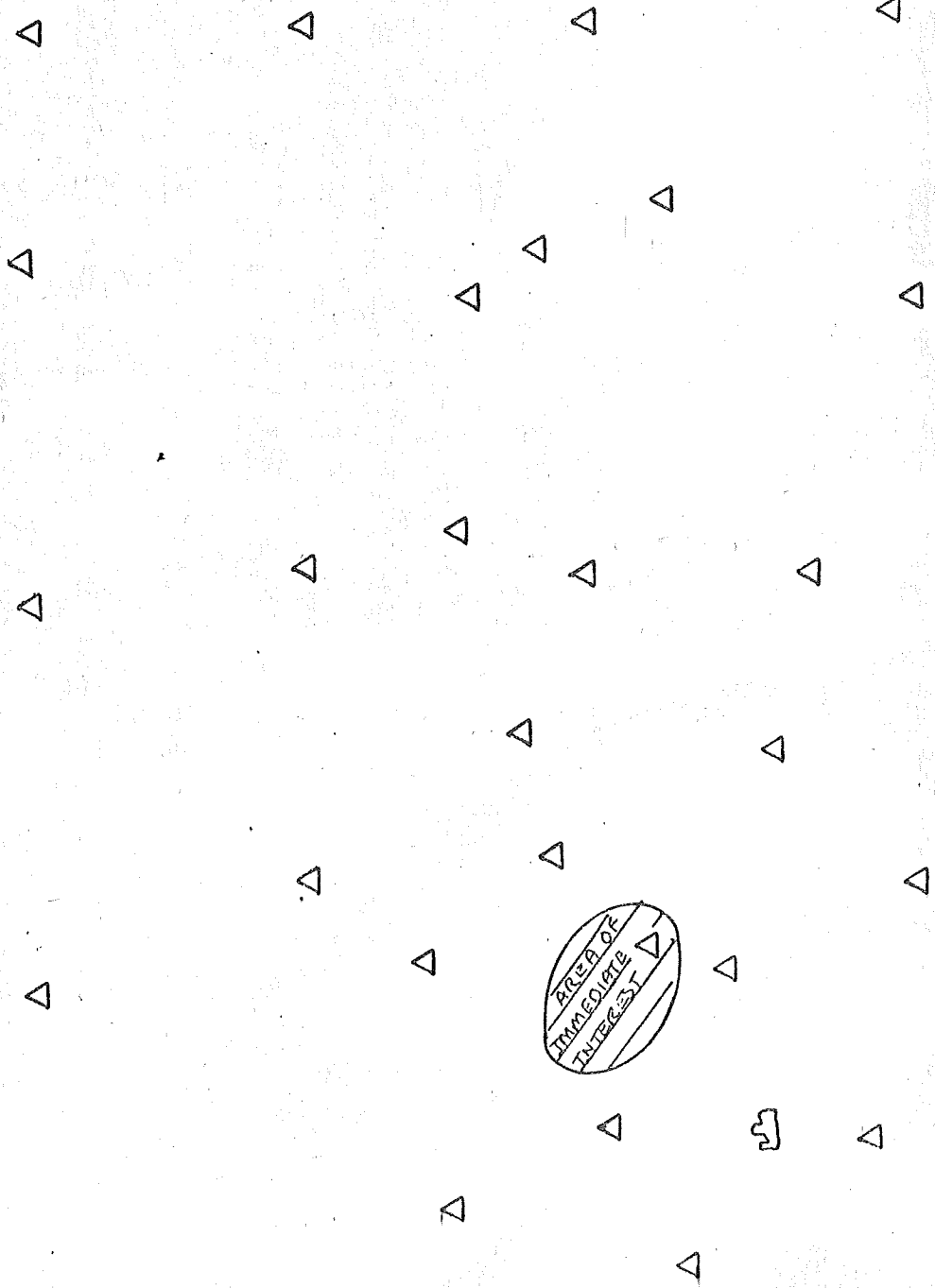


TOTAL GROUND
NOISE AMPLITUDE
1-10 C/S.



1st DOMINANT
FREQUENCY
C/S

ADVISE MAP



AREA OF IMMEDIATE INTEREST

