

046
100.8

CA: Inyo
AMT

UNITED STATES DEPARTMENT OF THE INTERIOR
GEOLOGICAL SURVEY

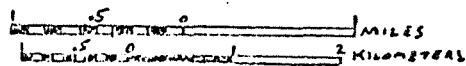
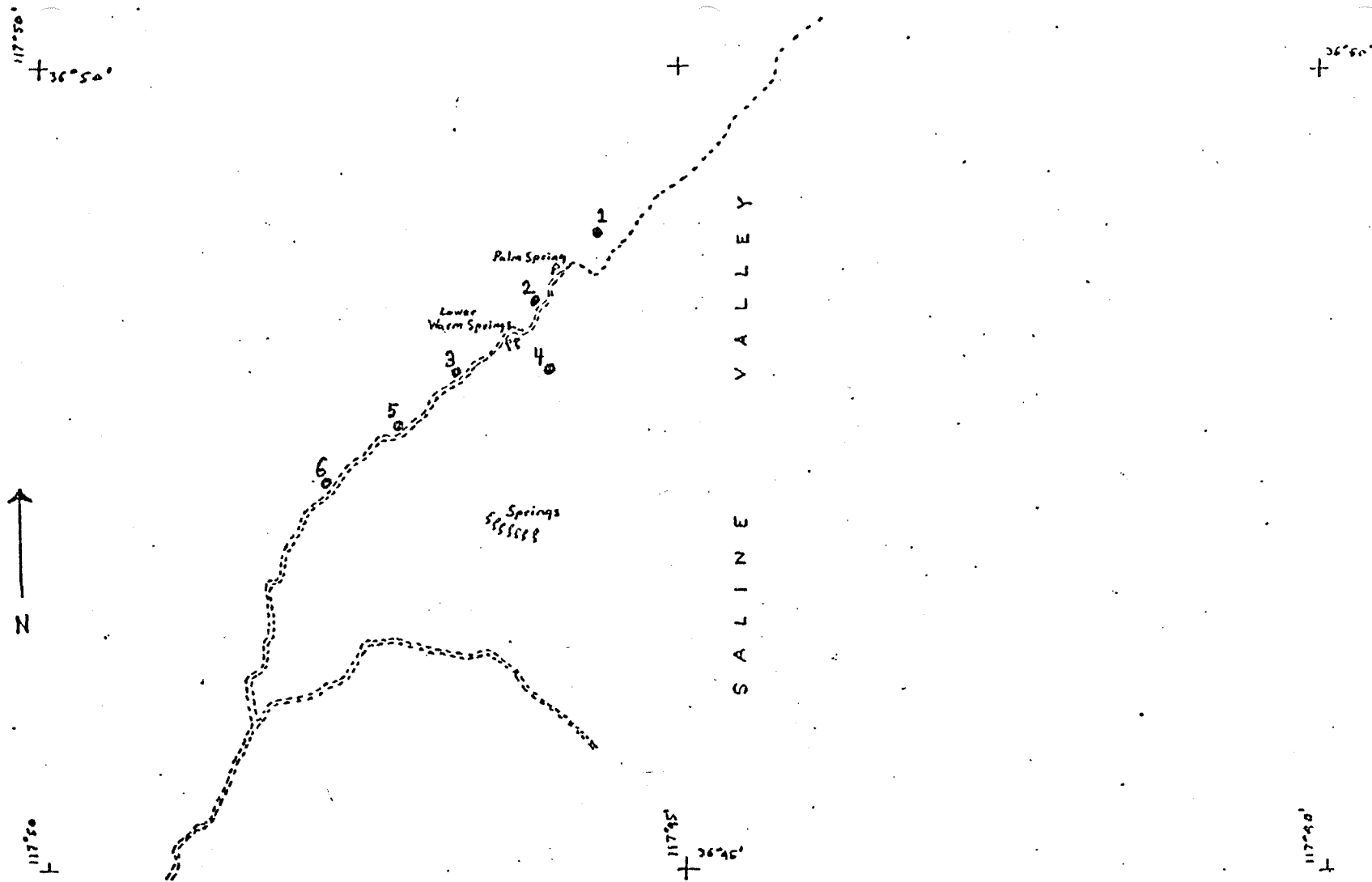
Audio-magnetotelluric Data Log and Station Location Map
for the
Saline Valley Known Geothermal Resource Area, California

by
R. M. Senterfit and D. D. Moeller

Open-File Report 78-105D

1978

This report is preliminary and has not been
edited or reviewed for conformity with U.S.
Geological Survey standards.



LEGEND
 ● AMT STATION
 - - - - ROAD

AUDIO-MAGNETOTELLURIC STATION LOCATION MAP
 SALINE VALLEY KNOWN GEOTHERMAL RESOURCE AREA, CALIFORNIA
 R.M. SENTERFIT & D.D. MOELLER

SALINE VALLEY

U.S. GEOLOGICAL SURVEY A.M.T. DATA LOG

KGRA pa = observed apparent resistivity in ohm-metres
 N = number of observations
 Er = standard error in ohm metres

— = no data

"NOTE" - Telluric line orientation indicated with station numbers.

Sta. No.		FREQUENCY											
		7.5	10	14	27	76	285	685	1.2K	3.3K	6.7K	10.2K	18.6K
1 _{NS}	pa	102.6	131.8	283.2	101.0	137.1	—	—	—	—	103.5	—	9.7
	N	5	4	5	4	4					5		1
	Er	16.2	10.3	89.0	27.7	12.2					8.2		—
1 _{EW}	pa	124.3	64.5	17.6	13.7	20.3	7.1	—	—	—	17.8	—	12.0
	N	5	4	4	5	4	4				3		1
	Er	23.0	6.7	16.2	4.9	1.2	1.3				2.3		—
2 _{NS}	pa	66.8	49.8	39.0	13.7	8.0	3.2	—	—	—	46.3	16.2	7.1
	N	7	3	2	6	6	6				5	1	1
	Er	8.5	8.2	2.4	4.0	2.5	0.4				11.3	—	—
2 _{EW}	pa	31.5	42.0	—	5.7	5.4	2.9	—	—	—	5.6	5.9	4.7
	N	4	5		6	6	6				5	1	1
	Er	9.7	13.2		0.8	0.2	1.0				0.4	—	—
3 _{NS}	pa	51.5	70.4	67.9	4.5	2.3	3.3	—	—	—	—	23.4	19.5
	N	5	5	5	4	4	4					1	1
	Er	5.3	9.3	3.6	1.1	0.2	0.3					—	—
3 _{EW}	pa	54.7	61.7	36.7	2.2	1.8	2.9	—	—	—	11.6	29.7	5.1
	N	6	6	4	4	4	4				5	1	1
	Er	12.1	19.5	9.7	0.9	0.3	0.5				1.0	—	—
4 _{NS}	pa	19.3	10.1	8.6	13.9	10.2	2.1	—	—	—	47.2	14.6	1.5
	N	4	6	6	6	7	4				2	1	1
	Er	3.8	2.0	2.3	1.5	1.1	0.1				3.4	—	—
4 _{EW}	pa	12.0	6.4	5.7	6.9	4.0	—	—	—	—	1.8	7.3	2.2
	N	6	5	5	6	5					3.0	1	1
	Er	3.4	2.1	1.1	0.9	0.2					0.9	—	—

