

Proposed Plan of Exploration
McCoy Unit
Churchill and Lander County, Nevada

United States Geothermal Leases N-17449, N-17450
N-17451, N-17452, N-17454, N-17455, N-17470, N-17471,
N-18851, N-18852, N-18854, N-18856, N-19924, N-19925,
N-19926, N-19927, N-19928, N-20073, N-24495, N-24496,
N-24497, N-24734.

AMAX Exploration, Inc.
7100 West 44th Ave.
Wheat Ridge, Colorado 80033

November 1980

INDEX

	Page
LOCATIONS AND ROADS	1-1
NARRATIVE STATEMENT	2-1
Environmental Protection	2-1
Solid Waste Disposal	2-2
Cultural Resources	2-2
DETAIL OF WORK	3-1
Earthwork and Construction	3-1
Drilling Program I (Thermal Gradient Wells)	3-1
Drilling Program II (Diamond Drill Test Wells)	3-1
Drilling Program III (Large Rotary Rigs)	3-2
Drilling Program I (Thermal Gradient Wells)	4-1
Drilling Program II (Diamond Drill Test Wells)	4-2
Drilling Program III (Large Oil Field Rigs)	4-3
CONTINGENCY PLANS	5-1
Accidental Spills or Discharges	5-3
Uncontrolled Blowouts	5-4
Hydrogen Sulfide	5-5
GENERAL SAFETY PRACTICES	6-1

LOCATIONS AND ROADS

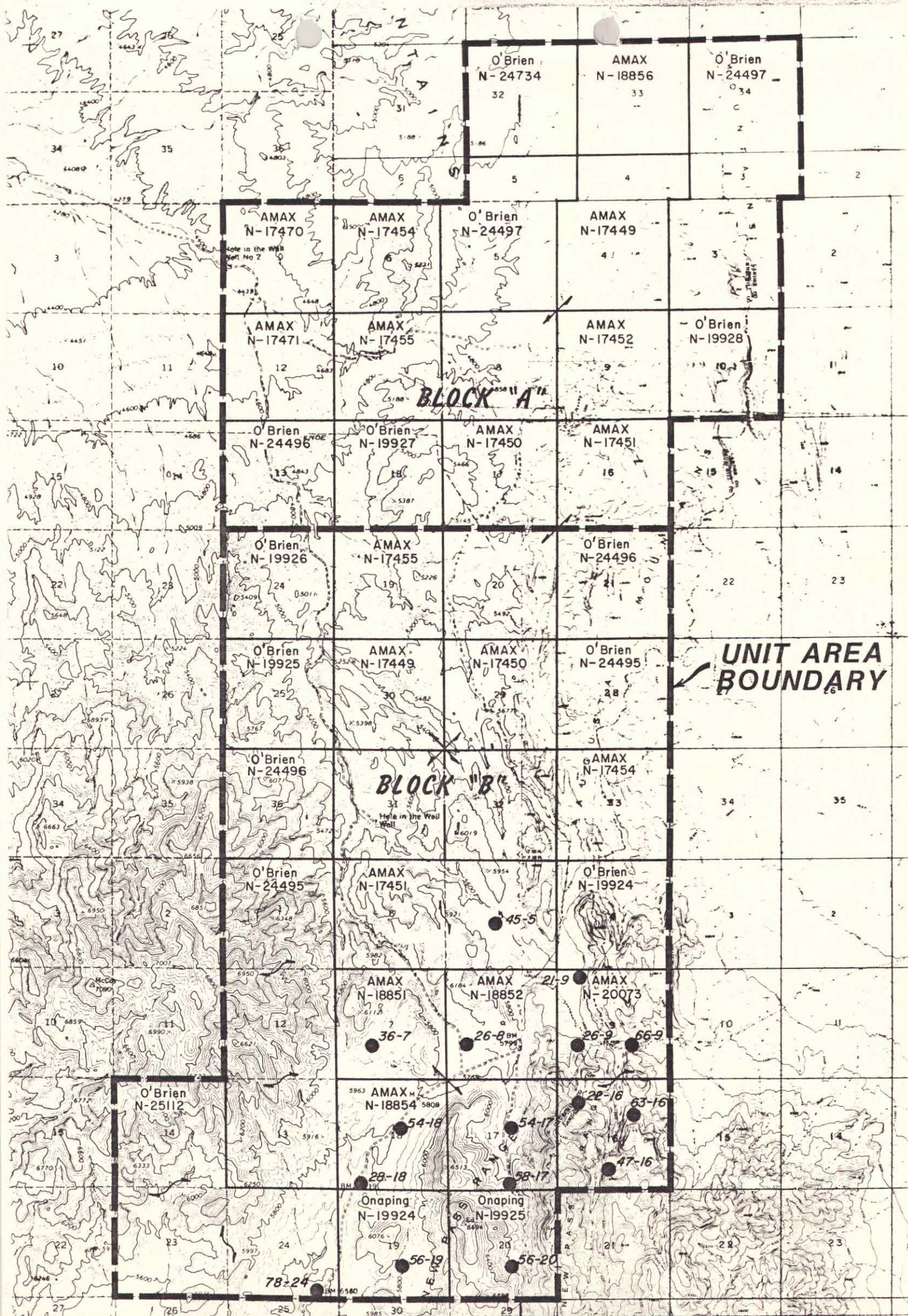
AMAX Exploration, Inc., Geothermal Branch, proposes to drill up to sixteen (16) geothermal test wells at the McCoy Unit, Churchill and Lander Counties, Nevada (Exhibit "A"). The exploration plan calls for a phased drilling program of progressively deeper holes to test the geothermal potential of Block B (Exhibit "A"). The planned well locations, proposed depths and proposed drilling programs are shown below:

<u>Well #</u>	<u>Location</u>	<u>Depth Range</u>	<u>Drilling Program</u>
26-9	NW SW Sec.9 T22N R40E	1-2000' (305-610m)	I
28-18	SW SW Sec.18 T22N R40E	1-2000' (305-610m)	I
52-19	NW SE Sec.19 T22N R40E	1-2000' (305-610m)	I
78-24	SE SE Sec.24 T22N R39E	1-2000' (305-610m)	I
21-9	NW NW Sec.9 T22N R40E	2500-6000' (762-1829m)	I, II, or III
54-18	SW NE Sec.18 T22N R40E	1-8000' (305-2439m)	I, II, or III
66-9	NW SE Sec.9 T22N R40E	1-8000' (305-2439m)	I, II, or III
63-16	SW NE Sec.16 T22N R40E	2-8000' (610-2439m)	I, II, or III
22-16	NW NW Sec.16 T22N R40E	2-8000' (610-2439m)	I, II, or III
58-17	SW SE Sec.17 T22N R40E	2-8000' (610-2439m)	I, II, or III
47-16	SE SW Sec.16 T22N R40E	2-8000' (610-2439m)	I, II, or III
56-20	NW SE Sec.20 T22N R40E	2-8000' (610-2439m)	I, II, or III
54-17	SW NE Sec.17 T22N R40E	4-8000' (1220-2439m)	II or III
26-8	NW SW Sec.8 T22N R40E	4-8000' (1220-2439m)	II or III
45-5	NE SW Sec.5 T22N R40E	5-8000' (1524-2439m)	II or III
36-7	NE SW Sec.7 T22N R40E	6-8000' (1829-2439m)	III

For the purposes of the Plan of Exploration (POE) Geothermal Drilling Permits (GDP) are included for all 16 drill holes. However, in order to have the necessary flexibility during exploration all the holes are being permitted for depths of 1,000 to 8,000 feet (305m to 2,439m) and for up to three different drilling programs. Prior to the commencement of drilling, a Sundry Notice will be submitted for each hole detailing the anticipated depth and specific drill program to be used.

Access to the McCoy Unit is over existing roads maintained by Churchill County and the Bureau of Land Management. The proposed drill sites will either be constructed adjacent to existing roads (locations 26-9, 54-18, 28-18, 78-18, 66-9, 54-17 and 26-8) or will require new road construction (locations 56-19, 56-20, 47-16, 58-17, 22-16, 63-16, 36-7, 21-9, and 45-5) as shown on Exhibit "B".

AMAX will proceed with the proposed work so as to comply with local, state and federal regulating governing environmental protection and restoration.



UNIT AREA BOUNDARY

BLOCK "A"

BLOCK "B"

EXHIBIT "A"

AMAX EXPLORATION, INC.
A SUBSIDIARY OF AMAX INC 7100 WEST 44TH AVENUE, WHEAT RIDGE, COLORADO 80033

GEOHERMAL BRANCH

McCoy-Nevada
Well Locations, Topography,
Lease and Unit Boundaries

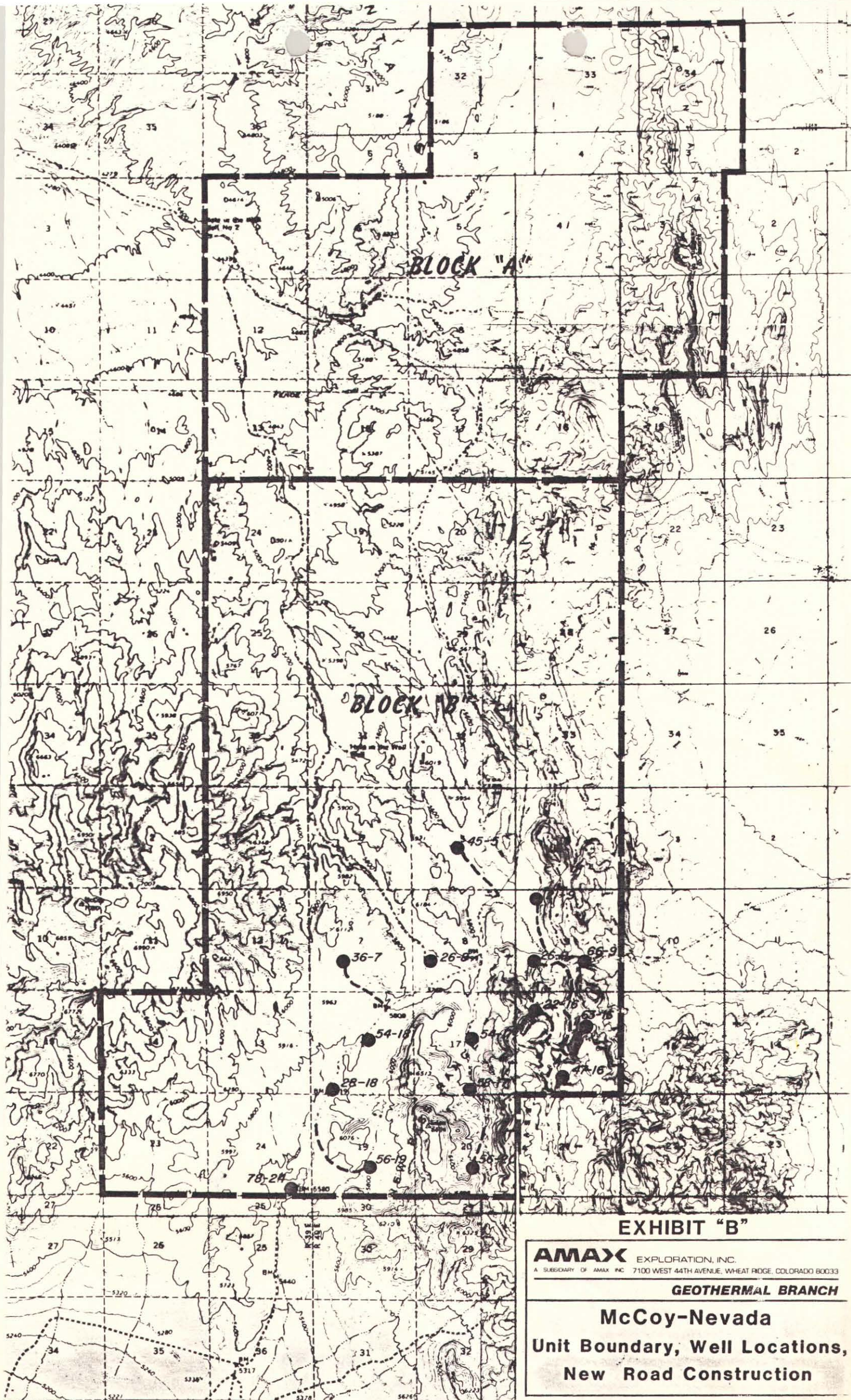


EXHIBIT "B"

AMAX EXPLORATION, INC.
A SUBSIDIARY OF AMAX INC 7100 WEST 44TH AVENUE, WHEAT RIDGE, COLORADO 80033

GEOTHERMAL BRANCH

**McCoy-Nevada
Unit Boundary, Well Locations,
New Road Construction**

NARRATIVE STATEMENT

ENVIRONMENTAL PROTECTION

A. Fire Control

1. All local, state, and federal fire protection standards applicable to AMAX's activities will be observed.
2. Vegetation at the proposed drill sites is sparse and will be cleared to the extent required for the operations. Smoking will be allowed in designated areas.
3. Exhaust stacks for all engines in service will be equipped with muffling systems recognized and approved for use in the area.
4. Water and suitable fire extinguishing equipment will be available at the drill sites.

B. Soil Erosion

Culverts will be installed and aggregate applied as needed on the existing access roads. Since the well sites were selected to take advantage of the topography, only minimal disturbance will occur during pad construction. The locations will be built in accordance with the recognized engineering requirements as specified in the BLM manual "Roads, Trails and Landing Fields".

C. Surface and Groundwater

All surface drainage on the drill sites will be confined to the sumps. All necessary precautions will be taken to prevent runoff of impurities from the drill sites into local drainages.

D. Fish and Wildlife

All requirements of the area regulatory agencies will be compiled with to avoid dislocation of wildlife and/or contamination of groundwater.

E. Noise and Air Quality

Noise levels will be maintained within guidelines specified by Federal Occupational Safety Health Act standards. Air quality will comply with local Air Pollution control standards. Adequate supplies of water will be maintained for dust control during the operation.

F. Safeguards to Public Health

All unattended equipment left following the drilling, felt to be of a hazardous nature, will be secured with a fence. Supervisory personnel will be on the sites during the course of the operations. All requirements for casing and blowout prevention will be followed.

SOLID WASTE DISPOSAL

The area will be kept clean of litter and trash. A burn pit will be utilized for all combustable materials. Drilling muds and cuttings will be dried in the sumps then buried.

CULTURAL RESOURCES

The Plan of Operation for wells 66-8, 14-7, 17-6, 17-33, 21-20 and 38-9 included an archeological survey for a part of the McCoy Unit. Archeological clearance will be obtained for each of the sites prior to the commencement of any work. The work will be done either by a BLM archeologist or by an approved contract archeologist.

DETAILS OF WORK

EARTHWORK AND CONSTRUCTION

The road and site construction required for the proposed geothermal test wells at the McCoy Unit will be done to meet the needs of each specific drilling program. The following descriptions are general in nature, and are intended to outline the scope of work to be done.

A. Drilling Program I (Thermal Gradient Well)

1. Road Construction - Access roads for the deep thermal gradient wells constructed to a standard which will allow a truck mounted rig and service vehicles to reach the site. The roads surface will be designed to accommodate single lane traffic with turnouts at strategic locations. Culverts and drainage ditches will be installed as needed.

2. Drill Site Construction - The drill sites selected for deep thermal gradient wells were selected so as to test a geothermal model in the most cost effective manner. The drill locations utilize natural topography to minimize earthwork and environmental disturbance. At most sites the construction will be limited to digging three (3) pits as shown on Exhibit "C".

3. Revegetation and Reclamation - Upon completion of the drilling operations, the pits will be dewatered by solar evaporation and then back-filled and graded to conform with the original contour of the land. Where needed, the disturbed area will be revegetated.

B. Drilling Program II (Diamond Drill Geothermal Test Well)

In the logical exploration for a geothermal resource it may be necessary to drill intermediate depth test wells to provide information on the geothermal model. Such geothermal test wells might well be of a slim hole

variety, and the extra information gained from continuous core could be important. Therefore, a diamond drill hole program has been included in the POE.

1. Road Construction - Where needed, new access roads will follow as much as possible the natural contours of the land. The road width shall be governed by the minimum required for safe equipment operations. The road surface will be designed to accommodate single lane traffic with turnouts at strategic locations. The roads will need to carry service vehicle traffic for a thirty (30) to ninety (90) day period. Therefore, culverts and drainage ditches will be utilized as needed. If aggregate material is required, it is planned to use tailings from the McCoy Mine.

2. Drill Site Construction - The drill sites required for an intermediate depth geothermal test well drilled with a diamond drill are comparable to those needed for the thermal gradient rigs. The sites were selected to utilize topography and minimize changes in natural contours and vegetative disturbance.

A reserve sump large enough to accommodate a short flow test may be incorporated into the drill site (Exhibit "D"). The reserve sump will be engineered in such a manner to preclude seepage into either surface waters or into groundwaters.

3. Revegetation and Reclamation - Upon completion of the drilling operations the mud pit and reserve pit will be dewatered by solar evaporation. The pits will then be backfilled and graded to conform with the original contours and revegetated if needed.

C. Drilling Program III (Large Rotary Rig)

The phased exploration drilling concept will target a production test well which requires either a slim hole oil field rig or standard oil

field type rig. The earthwork and construction required for such a rig is much greater than that required for Drilling Program I or II.

1. Road Construction - The existing road leading to the McCoy Unit will require some upgrading when Drilling Program III begins. The upgrading would include drainage ditches, culverts and gravel surface. Such work would be coordinated with the Churchill County Highway department and with the BLM.

New road construction to the drill sites will be done in such a way as to follow the natural contours as much as possible. The construction will be done under the supervision of an engineering firm to assure that generally accepted standards are met. The road width shall be limited by the minimum required for safe equipment operation. The road surface will be 15 to 20 feet wide designed to accomodate single lane traffic for tractor trailers and will have tunnels placed at strategic locations. Culverts, drainage ditches and gravel surfacing materials will be used as needed. Materials for surface gravel will be obtained from the mine dumps at McCoy Mine.

2. Drill Site Construction - The drill sites were selected to utilize natural topography and will be engineered to balance the cuts and fills. The drill pads (Exhibit "E") for the large rotary rigs must be approximately 300 feet square and will be constructed under the supervision of an engineering firm.

A reserve sump large enough to accomodate a short flow test will be incorporated into the drill site (Exhibit"E"). The reserve pit will be engineered in such a manner as to preclude seepage into either surface waters or into groundwaters.

3. Revegetation and Reclamation: Upon completion of the drilling operations, the reserve pit will be dewatered by solar evaporation, the pit will be backfilled and graded to the original contours and revegetated.

DRILLING PROGRAM I (Thermal Gradient Wells)

Drilling Plan

1. Drill a 9-7/8 inch hole to 10% of estimated total depth.
2. Run 7 inch casing and cement.
3. Install and test BOPE.
4. Drill 6 to 6-1/2 inch hole to TD.
5. Complete as described below.

Drilling Fluids

The well will be drilled with air to total depth if possible. When drilling with air small quantities of water and biodegradable foam are added to the air.

If sufficient water is encountered down hole to prevent drilling with air then a switch will be made to drilling mud. Drilling will proceed with a fluid optimized for the hole conditions. Solids will be maintained at as low a level as practical.

Blow-Out Prevention Equipment (BOPE)

1. 0-surface casing point - none
2. Surface casing-TD - pipe rams
blind rams

The exact BOPE depends upon the rig used for a specific hole. However, the BOPE will either be a mechanical type when only a shallow cellar is required or a hydraulic type when deeper cellars are called for. In both cases a master valve with a 2-inch kill line and a 2-inch flow line will be installed on the casing before the BOPE is attached.

Directional Requirements

The hole will be maintained as nearly vertical as possible. In no case will the deviation be allowed to reach the point that drill pipe fatigue is experienced.

Completion Program

1. Run tubing with bottom cap to TD.
2. Fill annulus with drill cuttings.
3. Cement top 10 feet of annulus.
4. Fill tubing with water.
5. Install top cap on tubing.

Logging Program

1. Temperature surveys - temperatures surveys will be made approximately every 500 feet - hole conditions permitting.
2. Casing point to TD - (hole conditions permitting)
 - a. Temperature log.
 - b. SP log.
 - c. Gamma log.

DRILLING PROGRAM II (Diamond Drill Test Wells)

Drilling Plan

1. Drill a 9 5/8" hole to 10% of estimated TD.
2. Run 7" casing and cement surface.
3. Install and test BOPE.
4. Run H(\approx 4 1/2") pipe and cement.
5. Drill HQ hole to \pm 4,000 feet.
6. Drill NQ hole to TD.

Mud Program

Drilling will proceed using a drilling fluid optimized for the hole conditions. Solids will be maintained at as low a level as is practical.

2. If a non-commercial situation exists, a valve will be installed and operations suspended. The well will be used for temperature and pressure observations in the future.

Flow Test

A short production flow test will be run if production is encountered. The flow test will be conducted for the time necessary to fill the reserve pit. The flow test will permit a test of wellhead equipment and give an estimate of the production capacity. Wellhead flowing pressures and temperatures will be measured, and well bore pressure and temperature will be measured upon completion of the flow test. The initial flow test provides data needed to set up an extended flow test needed to determine reservoir properties.

DRILLING PROGRAM III

Drilling Plan

1. 20-inch hole to 50 feet.
2. 13 3/8" conductor casing will be set to 50 feet.
3. Drill a 12 1/4" hole to 10% of estimated TD.
4. Run 9 5/8" surface casing and cement to surface.
5. Install and test BOPE.
6. Drill a 6 1/4" hole to 2,000-8,000 feet.
7. Complete well as described below.

Mud Program

Drilling will proceed using a drilling fluid optimized for the hole conditions. Solids will be maintained at as low a level as is practical.

Blow-Out Prevention Equipment (BOPE)

1. 0 to surface casing point - none
2. Casing point to TD - pipe rams
blind rams
annular preventor or rotating head

Directional Requirements

The hole will be maintained as nearly vertical as possible. In no case will the deviation be allowed to reach the point that drill fatigue is experienced.

Logging Program

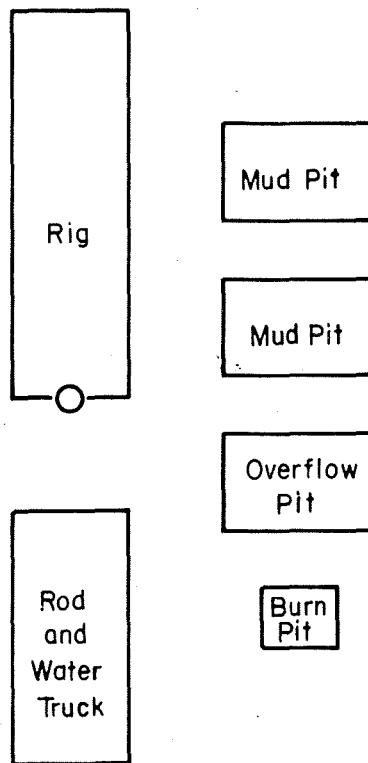
1. Temperature surveys - temperature measurements will be made every 500 feet - hole conditions permitting.
2. Casing point-TD - IES, BHC - Sonic, GR-FDC-CNL, Caliper (hole condition permitting).

Completion Program

1. If commercial temperatures and fluid influx rates are encountered, and hole conditions warrant, the following procedure will be followed:
 - a. Set a 200' cement plus 25 feet above the producing horizon.
 - b. Drill out 180 feet of plug.
 - c. Run 4 1/2" casing liner and cement to surface.
 - d. Drill out remainder of cement plug.
 - e. Install wellhead assembly.
2. If a non-commercial situation exists, an 8" WKM series 400 (ANSI) valve will be installed and operations suspended. The well will be used for temperature and pressure observations in the future.

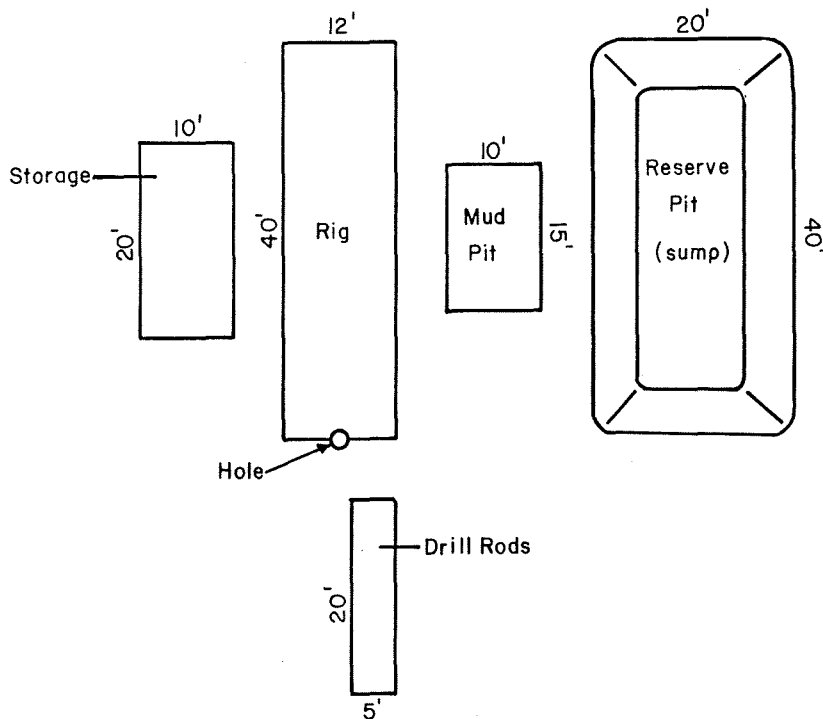
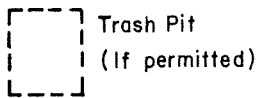
Flow Test

A short production flow test will be run if production is encountered. The flow test will be conducted for the time necessary to fill the reserve pit. The flow test will permit a test of wellhead equipment and give an estimate of the production capacity. Wellhead flowing pressures and temperatures will be measured, and wellbore pressure and temperature will be measured upon completion of the flow test. The initial flow test provides data needed to set up an extended flow test needed to determine reservoir properties.



SCALE 1"=20'

EXHIBIT "C"
TYPICAL Δ T RIG LAYOUT



SCALE = 1:20'
APPROXIMATELY 5' BETWEEN
EACH ITEM

EXHIBIT "D"
TYPICAL DIAMOND RIG LAYOUT

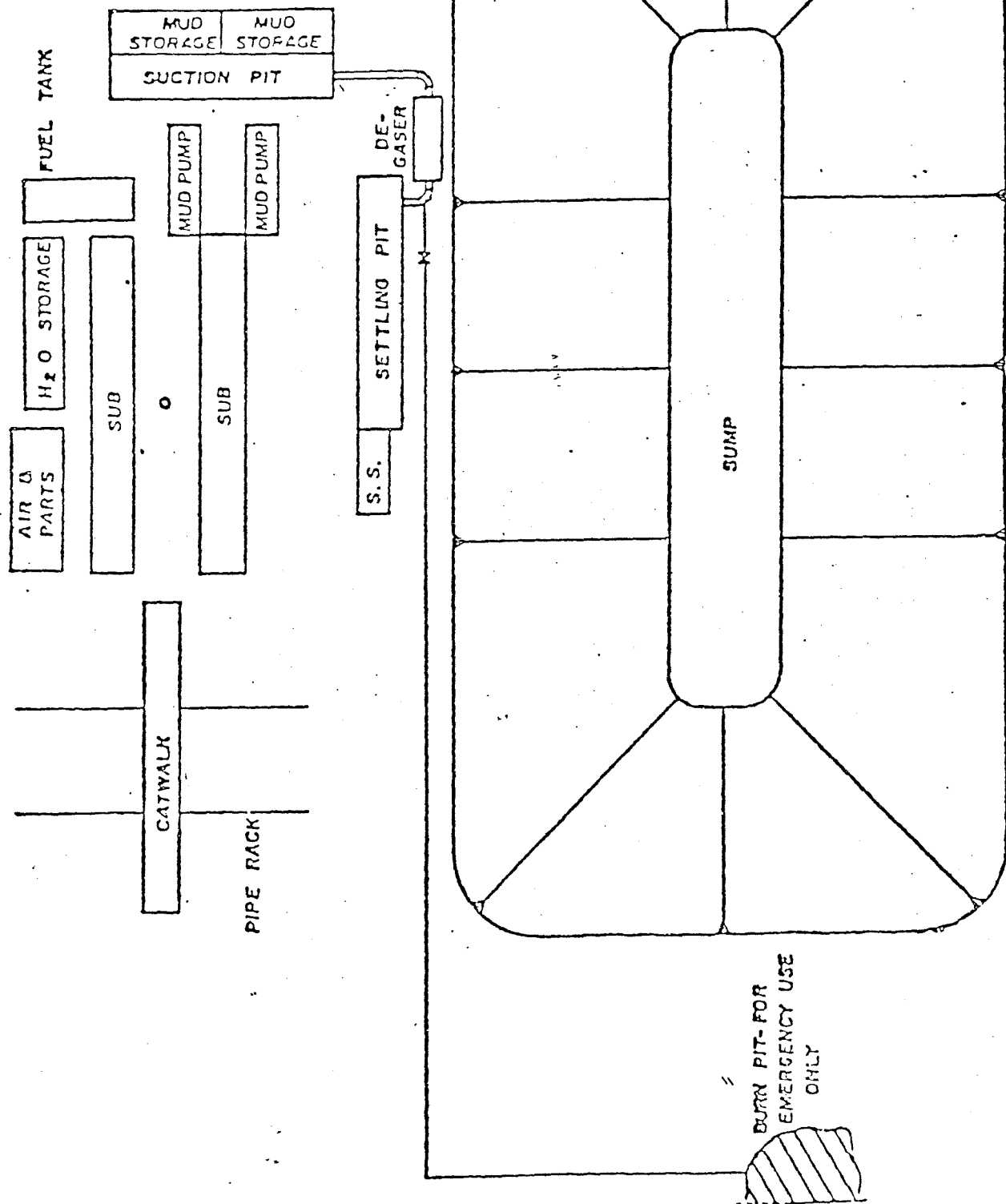


EXHIBIT "E"

TYPICAL RIG LAYOUT

SCALE: Approx. 1" = 30'

CONTINGENCY PLANS

The McCoy property is located approximately 10 miles from the nearest habitation. During the summer months the area is used for cattle grazing. AMAX will utilize the commonly accepted abatement procedures for any accidental spills or discharge which might occur, or for an uncontrolled blowout, or for hydrogen sulfide emissions. The field drilling foreman will initiate the appropriate abatement action and call the Drilling Supervisor.

Percy A. Wicklund

Office (303) 433-6151
Home (303) 233-2255

The Drilling Supervisor will notify the following:

1. Geothermal Manager and brief him on the situation and course of action:

W. Lodder	and	H. J. Olson
Office (303) 420-8100		Office (303) 420-8100
Home (303) 232-9179		Home (303) 988-5332

2. Notify the appropriate agencies or regulatory bodies from the following list:

State of Nevada
Water Resources Division
201 South Fall
Carson City, Nevada 89701

(702) 885-4380

State of Nevada Fish and Game Department
Regional Office
Elko, Nevada 89801

(702) 738-5332

Bernie Moroz, District Geothermal Supervisor
U. S. Geological Survey
#137 4600 Kietzke Lane
Reno, Nevada 89502

Office (702) 784-5676
Home (702) 826-8780

Bureau of Land Management
Carson City District
Carson City, Nevada 89701

Office (702) 882-1631

Nevada State Fish and Game Department
Regional Office
Fallon, Nevada 89406

Office (702) 423-3171

Water Resources Division
State of Nevada
201 South Fall
Carson City, Nevada 89701

Office (702) 885-4380

United States Geological Survey
Conservation Division
Geothermal Supervisor
Menlo Park, California 94025

Office (415) 323-8111

Churchill County Sheriff
Fallon, Nevada 89406

(702) 423-3116

Lander County Sheriff
Austin, Nevada 89310

(702) 964-3661

Battle Mountain, Nevada 89820

(702) 635-5161

3. If injuries have occurred, dispatch the injured personnel to the nearest medical facility by the fastest transportation available.

Ambulance Service:

Ground:

Air: (702) 423-2700
(702) 329-9022
(702) 623-2762

Hospital:

Fallon, NV (702) 423-3151
Battle Mountain, NV (702) 635-2550

Doctors:

Fallon (702) 423-3126
Battle Mountain (702) 423-7161

ACCIDENTAL SPILLS OR DISCHARGES

In the event of accidental spills or discharges of condensate, drilling muds, petroleum products or construction debris, the contingency plan is as follows:

1. The person responsible for the operation will make an immediate investigation, then call the Field Drilling Foreman and advise him of spill. The Field Drilling Foreman will in turn call out heavy equipment, regulate field operations, or do other work as applicable for control and clean-up of spill. If spill is small (i.e., less than 250 gallons) and easily containable without endangering watershed, Field Drilling Foreman will direct and supervise complete clean-up and return to normal operations.

2. If spill is larger than 250 gallons, or is not easily contained, or endangers or has entered watershed, Field Drilling Foreman will proceed to take necessary action to curtail, contain and clean up spill, and notify personnel as follows:

Percy A. Wicklund

Office (303) 433-6151

Home (303) 233-2255

The drilling supervisor will confirm the telephone notification in writing within two (2) weeks. The written report will include: 1) reason for discharge, 2) duration and volume of discharge, 3) steps taken to correct the problem, and 4) steps taken to prevent re-occurrence of problem.

UNCONTROLLED BLOWOUT

If the means to control the flow from a well is lost, the field drilling supervisor will initiate appropriate control procedures, containment procedures, and notify the drilling supervisor:

Percy A. Wicklund

Office (303) 433-6151

Home (303) 233-2255

The drilling supervisor initiates additional steps which may be deemed necessary after consultation with the field drilling supervisor. The drilling supervisor will confirm the telephone notification in writing within two (2) weeks. The written report will include 1) the reason for the blowout, 2) the duration and volume discharged, 3) the steps taken to correct the problem, and 4) steps taken to prevent re-occurrence of problem.

HYDROGEN SULFIDE

Previous drilling experience at the McCoy Unit suggests that hydrogen sulfide emissions will not be a serious problem. The drilling program calls for a mud program which should provide adequate abatement. Should sufficient amounts of hydrogen sulfide be encountered to require additional abatement, the field drilling supervisor will:

1. Notify Drilling Supervisor

Percy A. Wicklund

Office (303) 433-6151

Home (303) 233-2255

2. Stop drilling, circulate well until gas is controlled.
3. Make sure all non-essential personnel are out of potential danger area.

GENERAL SAFETY PRACTICES

The following general safety regulations and such additional regulations issued by the Field Drilling Supervisor are for your protection. All personnel are required to read and understand the general safety practices and the contingency plans.

1. REPORTING PERSONAL INJURIES

All of the job personal injuries, even of a minor nature, must be reported on AMAX's Workmen's Compensation Form no later than the end of the shift in which the injury occurred.

2. SMOKING

Smoking will be permitted only in authorized smoking areas.

3. OPEN FLAMES

Open flames are not permitted within 100 feet of the rig.

4. CLOTHING

All employees shall be clothed in a manner which will not impair their safety.

5. HAZARDOUS CHEMICALS

Safety equipment as prescribed by field, area, or district authority, shall be worn when handling chemicals.

6. EYE AND HEARING PROTECTION

Adequate eye and face protection devices will be worn when grinding, welding, chipping, pouring chemicals or wherever flying particles may cause eye injury. Hearing protection devices will be worn where required.

7. SAFETY SHOES

Steel-toed safety shoes should be worn by all employees except supervisors, office employees and those unable to do so by reason of physical deformity.

8. SAFETY HATS

Safety hats must be worn by employees and visitors in accordance with the rules established for the particular field, area, or district.

9. SAFETY BELTS

Safety belts will be worn on all above ground work as prescribed by field, area, or district.

10. SEAT BELTS

While driving company automotive equipment, seat belts must be worn at all times by driver and passengers if vehicle is so equipped.

11. HORSEPLAY

Horseplay or practical jokes will not be permitted.

12. TOOLS

Only tools in good working condition and designed for the particular job being performed shall be used.

13. ELECTRICAL

Only qualified and designated employees shall work on electrical lines and equipment. All rig lighting should be vapor and/or explosive proof. Wellheads, blowout preventers and cellar should be illuminated with flood lights located as far away as possible maintaining proper illumination.

14. MACHINERY

Repairs shall not be made on machinery until power is positively locked out at the electrical disconnect. Prime movers, machine or equipment capable of movement, shall be effectively blocked or secured while repairs are being made. All engines should be equipped with explosion resistant or explosion proof ignition systems and water injection system for exhaust. All engine exhaust should be welded to insure a closed system.

15. GUARDS

Guards must not be removed while equipment is operating and must be in place before start-up.

16. HOUSEKEEPING

Good housekeeping is an aid to safety. All employees will keep tools, equipment and area clean and orderly.

17. ACCIDENT PREVENTION RESPONSIBILITY

Each employee is responsible for prevention of accidents to men working under his supervision. It is his responsibility to train these employees in the safest and most efficient way to work. It is the further responsibility of each employee to correct or report to his supervisor any unsafe condition or practice which he may observe.

18. VIOLATIONS

Employees who violate these safety regulations or others issued by the field, area, or district will be subject to disciplinary action.

19. SAFETY HATS

All personnel will wear safety hats while on the project.

20. GAMBLING, LIQUOR AND NARCOTICS

There will be no gambling, intoxicating liquor, or narcotics on Company owned, leased, or operational properties.

21. EAR PROTECTION

All personnel working in high noise level areas as designated by the company are required to wear hearing protectors at all times.

22. WELDING IN FIELD AREAS

No welding will be done without fire watch with extinguisher. Welding is not to be permitted on the rig unless authorized. If welding is required, approval is required from the Drilling Supervisor.

23. SAFE DRIVING

All personnel will drive with caution on the project. Where steam conditions limit vision, personnel will use vehicle headlights and proceed slowly through the area.

24. EQUIPMENT OPERATION

All personnel will follow State and Federal Safety Regulations and maintain a minimum clearance of 10 feet from overhead high voltage.

25. ELECTRIC HAND TOOLS

Portable electric hand tools with exposed non-current carrying metal parts shall be grounded unless the portable tools are protected by an approved system of double insulation.

26. SAFETY MEETINGS

All personnel will attend and participate in the monthly safety meeting.

27. FIRE CONTROL

All local, county, state and federal fire protection standards applicable to AMAX's activities will be observed.

Note: AMAX Exploration, Inc., is prepared to submit, upon notification to do so, any further information which might be required. AMAX is also prepared to do the monitoring deemed necessary to ensure compliance with regulations covering existing air and water quality, noise, seismic and land subsidence activities in accordance with CFR 270.34(k).

GEOTHERMAL DRILLING PERMIT

The U.S. Geological Survey requires this form or other Supervisor approved form to be prepared and filed in triplicate with requisite attachments with the Supervisor. The Supervisor must approve this permit prior to any lease operation.

1a. TYPE OF WORK: DRILL NEW WELL REDRILL () DEEPEN () PUMP BACK () DIRECTIONALLY DRILL () OTHER ()

1b. WELL TYPE: PRODUCTION () INJECTION () HEAT EXCHANGE () OBSERVATION () WATER SUPPLY () OTHER Geothermal test well

1c. WELL STATUS: New well

2. NAME OF LESSEE/OPERATOR
AMAX Exploration, Inc.

3. ADDRESS OF LESSEE/OPERATOR
7100 West 44th Avenue, Wheat Ridge, Colorado 80033

15. LOCATION OF WELL
At surface NW $\frac{1}{4}$ SW $\frac{1}{4}$, Section 9, T22N, R40E, MDBM, 900' from West line,
At proposed prod. zone N/A 1600' from South line

16. DISTANCE FROM PROPOSED LOCATION TO NEAREST PROPERTY OR LEASE LINE

900' from West line (section line)

17. DISTANCE FROM PROPOSED LOCATION TO NEAREST WELL, DRILLING, COMPLETED, OR APPLIED FOR ON THIS LEASE

2,900' from 66-8

18. DRILLING MEDIA AND CHARACTERISTICS: AIR WATER () MUD FOAM Other ()

19. PROPOSED DEPTH
MEASURED: 1,000-2,000'
TRUE VERTICAL: 1,000-2,000'

20. ELEVATIONS: ESTIMATED FINAL () 5,860'
REFERENCE DATUM: GR MAT () OF () KB () RT () CASINGHEAD FLANGE () OTHER ()

21. EXISTING AND/OR PROPOSED CASING AND CEMENTING PROGRAM (List existing program first, followed by proposed program, and separate by a sufficient space to clearly distinguish the two programs)

SIZE OF HOLE	SIZE OF CASING	WEIGHT PER FOOT	COUPLING (Collars & Threads)	GRADE	SETTING DEPTH	QUANTITY OF CEMENT
9-7/8"	7"				100' to 200'	
6"-6 $\frac{1}{2}$ "	2-3/8" (tubing) or NX casing				Surface to TD	

22. PROPOSED WORK SUMMARY

Refer to Proposed Plan of Exploration - Drilling Program I (thermal gradient wells).

(Use additional space on reverse side of form)

23. Wendy E. Merrill Supervisor, Land Records 11/10/80
SIGNED Wendy E. Merrill TITLE and Permits DATE

(This space for Federal Use)

APPROVED BY _____ TITLE _____ DATE _____

CONDITIONS OF APPROVAL, IF ANY:

This permit is required by law (30 U.S.C. 1023); regulations: 30 CFR 270.71; Federal Geothermal Lease Terms and Stipulations and other regulatory requirements. The United States Criminal Code (18 U.S.C. 1001) makes it a criminal offense to make a willfully false statement or representation to any Department or Agency of the United States as to any matter within its jurisdiction.

(See instructions on reverse side)

GEOTHERMAL DRILLING PERMIT

The U.S. Geological Survey requires this form or other Supervisor approved form to be prepared and filed in duplicate with requisite attachments with the Supervisor. The Supervisor must approve this permit prior to any lease operation.

1a. TYPE OF WORK: DRILL NEW WELL REGRILL () DEEPEN () PUMP BACK () DIRECTIONALLY DRILL () OTHER ()

1b. WELL TYPE: PRODUCTION () INJECTION () HEAT EXCHANGE () OBSERVATION () WATER SUPPLY () OTHER **Geothermal test well**

1c. WELL STATUS: **New well**

2. NAME OF LESSEE/OPERATOR
AMAX Exploration, Inc.

3. ADDRESS OF LESSEE/OPERATOR
7100 West 44th Avenue, Wheat Ridge, Colorado 80033

15. LOCATION OF WELL
 At surface **SW $\frac{1}{4}$ SW $\frac{1}{4}$, Sec.18, T22N, R40E, MDBM, 900' from West line**
 At proposed prod. zone **N/A**
300' from South line (section line)

16. DISTANCE FROM PROPOSED LOCATION TO NEAREST PROPERTY OR LEASE LINE
300' from South line (section line)

17. DISTANCE FROM PROPOSED LOCATION TO NEAREST WELL, DRILLING, COMPLETED, OR APPLIED FOR ON THIS LEASE
10,000' from 66-8

4. OFFICE SERIAL NO.
N-18854

5. BUDGET MAJOR: BLM () FS
USGS Other (X)

6. UNIT AGREEMENT NAME
McCoy

7. WELL NO.
28-18

8. PERMIT NO.

9. FIELD OR AREA
Wildcat

10. SEC. T., R., S. & M.
SW $\frac{1}{4}$ SW $\frac{1}{4}$, Section 18, T22N, R40E, MDBM

11. COUNTY
Churchill

12. STATE
Nevada

13. APPROX. STARTING DATE
Unknown

14. ACRES ASSIGNED (WELL SPACING)
629.98 acres

18. DRILLING MEDIA AND CHARACTERISTICS: AIR WATER () MUD FOAM OTHER ()

19. PROPOSED DEPTH
 MEASURED: **1,000-2,000'**
 TRUE VERTICAL: **1,000-2,000'**

20. ELEVATIONS: ESTIMATED FINAL () **5,719'**
 REFERENCE DATUM: GR NAT () OF () KB () RT () CASINGHEAD FLANGE () OTHER ()

21. EXISTING AND/OR PROPOSED CASING AND CEMENTING PROGRAM (List existing program first, followed by proposed program, and separate by a sufficient space to clearly distinguish the two programs)

SIZE OF HOLE	SIZE OF CASING	WEIGHT PER FOOT	COUPLING (Collars & Threads)	GRADE	SETTING DEPTH	QUANTITY OF CEMENT
9-7/8"	7"				100' to 200'	
6"-6 $\frac{1}{2}$ "	2-3/8" (tubing) or NX casing				Surface to TD	

22. PROPOSED WORK SUMMARY

Refer to Proposed Plan of Exploration - Drilling Program I (thermal gradient wells).

(Use additional space on reverse side of form)

23. Wendy E. Merrill Supervisor, Land Records and Permits 11/10/80
 SIGNED Wendy E. Merrill TITLE and Permits DATE

APPROVED BY _____ TITLE _____ DATE _____

CONDITIONS OF APPROVAL, IF ANY:

Permit is required by law (30 U.S.C. 1023); regulations: 30 CFR 270.71; Federal Geothermal Lease Terms and Stipulations and other regulatory requirements. The United States Criminal Code (18 U.S.C. 1001) makes it a criminal offense to make a willfully false statement or representation to any Department or Agency of the United States as to any matter within its jurisdiction.

(See instructions on reverse side)

GEOTHERMAL DRILLING PERMIT

The U.S. Geological Survey requires this form or other Supervisor approved form to be prepared and filed in accordance with requisite attachments with the Supervisor. The Supervisor must approve this permit prior to any lease operation.

4. LEASE SERIAL NO. **N-19924**

5. SUPERVISOR: BLM () FS **USGS** Genes (X)

6. UNIT AGREEMENT NAME **McCoy**

7. WELL NO. **52-19** 8. PERMIT NO.

9. NAME OF LESSEE/OPERATOR **AMAX Exploration, Inc.**

10. ADDRESS OF LESSEE/OPERATOR **7100 West 44th Avenue, Wheat Ridge, Colorado 80033**

11. LOCATION OF WELL
At surface **NW $\frac{1}{4}$ SE $\frac{1}{4}$, Sec. 19, T22N, R40E, MDBM, 900' from North line**
At proposed prod. zone **N/A** **2250' from East line**

12. DISTANCE FROM PROPOSED LOCATION TO NEAREST PROPERTY OR LEASE LINE
900' from North line (section line)

13. DISTANCE FROM PROPOSED LOCATION TO NEAREST WELL, DRILLING, COMPLETED, OR APPLIED FOR ON THIS LEASE
9,500' from 66-8

14. FIELD OR AREA **Wildcat**

15. SEC. T., R., B.M. **NW $\frac{1}{4}$ SE $\frac{1}{4}$, Section 19, T22N, R40E, MDBM**

16. COUNTY **Churchill**

17. STATE **Nevada**

18. APPROX. STARTING DATE **Unknown**

19. ACRES ASSIGNED (WELL SPACING) **1,911.38 acres**

19. DRILLING MEDIA AND CHARACTERISTICS: AIR **XX** WATER () MUD **XX** FOAM **XX** Other ()

20. PROPOSED DEPTH
MEASURED: **1,000-2,000'**
TRUE VERTICAL: **1,000-2,000'**

21. ELEVATIONS: ESTIMATED **XX** FINAL () **5,950'**

22. REFERENCE DATUM: GR **XX** MAT () OF () KB () RT () CASING/HEAD FLANGE () OTHER ()

21. EXISTING AND/OR PROPOSED CASING AND CEMENTING PROGRAM (List existing program first, followed by proposed program, and separate by a sufficient space to clearly distinguish the two programs)

SIZE OF HOLE	SIZE OF CASING	WEIGHT PER FOOT	COUPLING (Collars & Threads)	GRACE	SETTING DEPTH	QUANTITY OF CEMENT
9-7/8"	7"				100' to 200'	
(6"-6 1/2"	2-3/8" (tubing) or NX casing				Surface to TD	

22. PROPOSED WORK SUMMARY

Refer to Proposed Plan of Exploration - Drilling Program I (thermal gradient wells).

(Use additional space on reverse side of form)

23. Wendy E. Merrill Supervisor, Land Records 11/10/80
SIGNED Wendy E. Merrill TITLE and Permits DATE

APPROVED BY _____ TITLE _____ DATE _____

CONDITIONS OF APPROVAL, IF ANY:

A permit is required by law (30 U.S.C. 1023); regulations: 30 CFR 270.71; Federal Geothermal Lease Terms and Stipulations and other regulatory requirements. The United States Criminal Code (18 U.S.C. 1001) makes it a criminal offense to make a willfully false statement or representation to any Department or Agency of the United States as to any matter within its jurisdiction.

(See instructions on reverse side)

GEOTHERMAL DRILLING PERMIT

The U.S. Geological Survey requires this form or other Supervisor approved form to be prepared and filed in accordance with requisite attachments with the Supervisor. The Supervisor must approve this permit prior to any lease operation.

1a. TYPE OF WORK: DRILL NEW WELL <input checked="" type="checkbox"/> RE-DRILL () DEEPEN () PUMP BACK () DIRECTIONALLY DRILL () OTHER ()		4. STATE SERIAL NO. N-25112
1b. WELL TYPE: PRODUCTION () INJECTION () HEAT EXCHANGE () OBSERVATION () WATER SUPPLY () OTHER <input checked="" type="checkbox"/> Geothermal test well		5. SURFACE MATERIAL: BLM () FS USGS Other (X)
1c. WELL STATUS: New well		6. UNIT AGREEMENT NAME McCoy
1d. NAME OF LESSEE/OPERATOR AMAX Exploration, Inc.		7. WELL NO. 78-24
1e. ADDRESS OF LESSEE/OPERATOR 7100 West 44th Avenue, Wheat Ridge, Colorado 80033		8. FIELD OR AREA Wildcat
1f. LOCATION OF WELL At surface SE $\frac{1}{4}$ SE $\frac{1}{4}$, Section 24, T22N, R39E, MDBM, 400' from South line At proposed prod. zone N/A 1500' from East line		9. SEC. T., R., S. N. SE $\frac{1}{4}$ SE $\frac{1}{4}$, Section 24, T22N, R39E, MDBM
1g. DISTANCE FROM PROPOSED LOCATION TO NEAREST PROPERTY OR LEASE LINE 400' from South line (section line)		10. COUNTY Churchill
1h. DISTANCE FROM PROPOSED LOCATION TO NEAREST WELL, DRILLING, COMPLETED, OR APPLIED FOR ON THIS LEASE 15,000' from 66-8		11. STATE Nevada
19. PROPOSED DEPTH MEASURED: 1,000-2,000' TRUE VERTICAL: 1,000-2,000'		12. APPROX. STARTING DATE Unknown
18. DRILLING MEDIA AND CHARACTERISTICS: AIR <input checked="" type="checkbox"/> WATER () MUD <input checked="" type="checkbox"/> FOAM <input checked="" type="checkbox"/> Other ()		13. ACRES ASSIGNED (WELL SPACING) 1,920.00 acres
20. ELEVATIONS: ESTIMATED <input checked="" type="checkbox"/> FINAL () 5,580'		14. REFERENCE DATUM: GR <input checked="" type="checkbox"/> MAT () OF () KB () RT () CASINGHEAD FLANGE () OTHER ()

21. EXISTING AND/OR PROPOSED CASING AND CEMENTING PROGRAM (List existing program first, followed by proposed program, and separate by a sufficient space to clearly distinguish the two programs)

SIZE OF HOLE	SIZE OF CASING	WEIGHT PER FOOT	COUPLING (Collars & Threads)	GRADE	SETTING DEPTH	QUANTITY OF CEMENT
9-7/8"	7"				100' to 200'	
6"-6 $\frac{1}{2}$ "	2-3/8" (tubing) or NX casing				Surface to TD	

22. PROPOSED WORK SUMMARY

Refer to Proposed Plan of Exploration - Drilling Program I (thermal gradient wells).

(Use additional space on reverse side of form)

23. Wendy F. Merrill Supervisor, Land Records 11/10/80
 SIGNED Wendy F. Merrill TITLE and Permits DATE

(This space for Federal use)

APPROVED BY _____ TITLE _____ DATE _____

CONDITIONS OF APPROVAL, IF ANY:

This permit is required by law (30 U.S.C. 1023); regulations: 30 CFR 250.71; Federal Geothermal Lease Terms and Stipulations and other regulatory requirements. The United States Criminal Code (18 U.S.C. 1001) makes it a criminal offense to make a willfully false statement or representation to any Department or Agency of the United States as to any matter within its jurisdiction.

(See instructions on reverse side)

GEOTHERMAL DRILLING PERMIT

The U.S. Geological Survey requires this form or other Supervisor approved form to be prepared and filed in accordance with requisite attachments with the Supervisor. The Supervisor must approve this permit prior to any lease operation.

1a. TYPE OF WORK: DRILL NEW WELL REGRILL () DEEPEN () PUMP BACK () DIRECTIONALLY DRILL () OTHER ()

1b. WELL TYPE: PRODUCTION () INJECTION () HEAT EXCHANGE () OBSERVATION () WATER SUPPLY () OTHER Geothermal test well

1c. WELL STATUS: New well

1d. NAME OF LESSEE/OPERATOR: AMAX Exploration, Inc.

1e. ADDRESS OF LESSEE/OPERATOR: 7100 West 44th Avenue, Wheat Ridge, Colorado 80033

1f. LOCATION OF WELL:
At surface NW $\frac{1}{4}$ NW $\frac{1}{4}$, Section 9, T22N, R40E, MDBM, 400' from North line
At proposed prod. zone N/A 1050' from West line

1g. DISTANCE FROM PROPOSED LOCATION TO NEAREST PROPERTY OR LEASE LINE:
400' from North line (section line)

1h. DISTANCE FROM PROPOSED LOCATION TO NEAREST WELL, DRILLING, COMPLETED, OR APPLIED FOR ON THIS LEASE:
4,500' from 66-8

4. LEASE SERIAL NO.: N-20073

5. SURFACE MANAGER: BLM () PG Other (X) USGS

6. UNIT AGREEMENT NAME: McCoy

7. WELL NO.: 21-9 8. PERMIT: Wildcat

9. FIELD OR AREA: Wildcat

10. SEC. T., R., S. M.: NW $\frac{1}{4}$ NW $\frac{1}{4}$, Section 9, T22N, R40E, MDBM

11. COUNTY: Churchill

12. STATE: Nevada

13. APPROX. STARTING DATE: Unknown

14. ACRES ASSIGNED (WELL SPACING): 1,280.00 acres

18. DRILLING MEDIA AND CHARACTERISTICS: AIR WATER () MUD FOAM Other ()

19. PROPOSED DEPTH:
MEASURED: 2,500-6,000'
TRUE VERTICAL: 2,500-6,000'

20. ELEVATIONS: ESTIMATED FINAL () 5,800'
REFERENCE DATUM: GR MAT () DP () KB () RT ()
CASINGHEAD FLANGE () OTHER ()

21. EXISTING AND/OR PROPOSED CASING AND CEMENTING PROGRAM (List existing program first, followed by proposed program, and separate by a sufficient space to clearly distinguish the two programs):

SIZE OF HOLE	SIZE OF CASING	WEIGHT PER FOOT	COUPLING (Collars & Threads)	GRADE	SETTING DEPTH	QUANTITY OF CEMENT
Refer to Proposed Plan of Exploration						

22. PROPOSED WORK SUMMARY

Refer to Proposed Plan of Exploration -
 Drilling Program I (thermal gradient wells).
 Drilling Program II (diamond drill test wells).
 Drilling Program III (large oil field rig).

(Use additional space on reverse side of form)

23. Wendy E. Merrill Supervisor, Land Records and Permits 11/10/80
 SIGNED Wendy E. Merrill TITLE DATE

APPROVED BY _____ TITLE _____ DATE _____

CONDITIONS OF APPROVAL, IF ANY:

This permit is required by law (30 U.S.C. 1023); regulations; 30 CFR 270.71; Federal Geothermal Lease Terms and Stipulations and other regulatory requirements. The United States Criminal Code (18 U.S.C. 1001) makes it a criminal offense to make a willfully false statement or representation to any Department or Agency of the United States as to any matter within its jurisdiction.

(See instructions on reverse side)

GEOHERMAL DRILLING PERMIT

The U.S. Geological Survey requires this form or other Supervisor approved form to be prepared and filed in accordance with requisite attachments with the Supervisor. The Supervisor must approve this permit prior to any lease operation.

1a. TYPE OF WORK: DRILL NEW WELL RE-DRILL () DEEPEN () PUMP BACK () DIRECTIONALLY DRILL () OTHER ()

1b. WELL TYPE: PRODUCTION () INJECTION () HEAT EXCHANGE () OBSERVATION () WATER SUPPLY () OTHER Geothermal test well

1c. WELL STATUS: New well

2. NAME OF LESSEE/OPERATOR: AMAX Exploration, Inc.

3. ADDRESS OF LESSEE/OPERATOR: 7100 West 44th Avenue, Wheat Ridge, Colorado 80033

15. LOCATION OF WELL:
At surface SW 1/4 NE 1/4, Section 18, T22N, R40E, MDBM, 2300' from North line
At proposed prod. zone N/A 2300' from East line

16. DISTANCE FROM PROPOSED LOCATION TO NEAREST PROPERTY OR LEASE LINE:
2,300' from North or East line (section line)

17. DISTANCE FROM PROPOSED LOCATION TO NEAREST WELL, DRILLING, COMPLETED, OR APPLIED FOR ON THIS LEASE:
6,800' from 66-8

18. DRILLING MEDIA AND CHARACTERISTICS: AIR WATER () MUD FOAM Other ()

19. PROPOSED DEPTH:
MEASURED: 1,000-8,000'
TRUE VERTICAL: 1,000-8,000'

20. ELEVATIONS: ESTIMATED FINAL () 5,820'

REFERENCE DATUM: GR MAT () OF () KB () RT () CASINGHEAD FLANGE () OTHER ()

21. EXISTING AND/OR PROPOSED CASING AND CEMENTING PROGRAM (list existing program first, followed by proposed program, and separate by a sufficient space to clearly distinguish the two programs):

SIZE OF HOLE	SIZE OF CASING	WEIGHT PER FOOT	COUPLING (Collars & Threads)	GRADE	SETTING DEPTH	QUANTITY OF CEMENT
Refer to Proposed Plan of Exploration						

22. PROPOSED WORK SUMMARY

Refer to Proposed Plan of Exploration -
Drilling Program I (thermal gradient wells).
Drilling Program II (diamond drill test wells).
Drilling Program III (large oil field rig).

(Use additional space on reverse side of form)

23. Wendy E. Merrill Supervisor, Land Records and Permits 11/10/80
SIGNED Wendy E. Merrill TITLE DATE

(This space for Federal use)

APPROVED BY _____ TITLE _____ DATE _____

CONDITIONS OF APPROVAL, IF ANY:

This permit is required by law (30 U.S.C. 1023); regulations; 30 CFR 250.71; Federal Geothermal Lease Terms and Stipulations and other regulatory requirements. The United States Criminal Code (18 U.S.C. 1001) makes it a criminal offense to make a willfully false statement or representation to any Department or Agency of the United States as to any matter within its jurisdiction.

(See instructions on reverse side)

GEOTHERMAL DRILLING PERMIT

The U.S. Geological Survey requires this form or other Supervisor approved form to be prepared and filed in its office with requisite attachments with the Supervisor. The Supervisor must approve this permit prior to any lease operation.

1a. TYPE OF WORK: DRILL NEW WELL <input checked="" type="checkbox"/> REGRILL () DEEPEN () PUMP BACK () DIRECTIONALLY DRILL () OTHER ()	4. DRILL SERIAL NO. N-20073
1b. WELL TYPE: PRODUCTION () INJECTION () HEAT EXCHANGE () OBSERVATION () WATER SUPPLY () OTHER <input checked="" type="checkbox"/>	5. SURFICIAL MATERIAL: SLM () FG USGS Gencor (X)
1c. WELL STATUS: <u>New well</u>	6. UNIT AGREEMENT NAME McCoy
7. NAME OF LESSEE/OPERATOR AMAX Exploration, Inc.	7. WELL NO. 66-9
8. ADDRESS OF LESSEE/OPERATOR 7100 West 44th Avenue, Wheat Ridge, Colorado 80033	8. FIELD OR AREA Wildcat
9. LOCATION OF WELL At surface NW $\frac{1}{4}$ SE $\frac{1}{4}$, Section 9, T22N, R40E, MDBM, 1600' from South line At proposed prod. zone N/A 1700' from East line	9. SEC. T., R., B.M. NW $\frac{1}{4}$ SE $\frac{1}{4}$, Section 9, T22N, R40E, MDBM
10. DISTANCE FROM PROPOSED LOCATION TO NEAREST PROPERTY OR LEASE LINE 1,700' from East line (section line)	10. COUNTY Lander
11. DISTANCE FROM PROPOSED LOCATION TO NEAREST WELL, DRILLING, COMPLETED, OR APPLIED FOR ON THIS LEASE 5,600' from 66-8	11. STATE Nevada
12. DRILLING MEDIA AND CHARACTERISTICS: AIR <input checked="" type="checkbox"/> WATER () MUD <input checked="" type="checkbox"/> FOAM <input checked="" type="checkbox"/> OTHER ()	12. APPROX. STARTING DATE Unknown
13. PROPOSED DEPTH MEASURED: 1,000' - 8,000' TRUE VERTICAL: 1,000' - 8,000'	13. ACRES ASSIGNED (WELL SPACING) 1,280.00 acres
14. ELEVATIONS: ESTIMATED <input checked="" type="checkbox"/> FINAL () 5,720'	
15. EXISTING AND/OR PROPOSED CASING AND CEMENTING PROGRAM (List existing program first, followed by proposed program, and separate by a sufficient space to clearly distinguish the two programs)	

SIZE OF HOLE	SIZE OF CASING	WEIGHT PER FOOT	COUPLING (Collars & Threads)	GRADE	SETTING DEPTH	QUANTITY OF CEMENT
Refer to Proposed Plan of Exploration						

22. PROPOSED WORK SUMMARY

Refer to Proposed Plan of Exploration -
 Drilling Program I (thermal gradient wells).
 Drilling Program II (diamond drill test wells).
 Drilling Program III (large oil field rig).

(Use additional space on reverse side of form)

23. Wendy E. Merrill Supervisor, Land Records 11/10/80
 SIGNED Wendy E. Merrill TITLE and Permits DATE

(This space for Federal use)
 APPROVED BY _____ TITLE _____ DATE _____

CONDITIONS OF APPROVAL, IF ANY:

This permit is required by law (30 U.S.C. 1023); regulations: 30 CFR 170.71; Federal Geothermal Lease Terms and Stipulations and other regulatory requirements. The United States Criminal Code (18 U.S.C. 1001) makes it a criminal offense to make a willfully false statement or representation to any Department or Agency of the United States as to any matter within its jurisdiction.

(See instructions on reverse side)

GEOTHERMAL DRILLING PERMIT

The U.S. Geological Survey requires this form or other Supervisor approved form to be prepared and filed in duplicate with requisite attachments with the Supervisor. The Supervisor must approve this permit prior to any lease operation.

1a. TYPE OF WORK: DRILL NEW WELL REPAIR () TEST () PUMP BACK () OPERATIONALLY DRILL () OTHER ()

1b. WELL TYPE: PRODUCTION () INJECTION () HEAT EXCHANGE () OBSERVATION () WATER SUPPLY () OTHER
Geothermal test well

1c. WELL STATUS: New well

2. NAME OF LESSEE/OPERATOR
AMAX Exploration, Inc.

3. ADDRESS OF LESSEE/OPERATOR
7100 West 44th Avenue, Wheat Ridge, Colorado 80033

15. LOCATION OF WELL
At surface SW $\frac{1}{4}$ NE $\frac{1}{4}$, Section 16, T22N, R40E, MDBM, 1650' from East line
At proposed prod. zone N/A 1600' from North line

16. DISTANCE FROM PROPOSED LOCATION TO NEAREST PROPERTY OR LEASE LINE
1,650' from East line (section line)

17. DISTANCE FROM PROPOSED LOCATION TO NEAREST WELL, DRILLING, COMPLETED, OR APPLIED FOR ON THIS LEASE
6,525' from 66-8

4. LEASE SERIAL NO.
N-20073

5. SHORTNAME MAJOR: BLM () FS
USGS Conserv (X)

6. UNIT AGREEMENT NAME
McCoy

7. WELL NO. 63-16 8. PERMIT

9. FIELD OR AREA
Wildcat

10. SEC. T., R., S. & M.
SW $\frac{1}{4}$ NE $\frac{1}{4}$, Section 16, T22N, R40E, MDBM

11. COUNTY
Lander

12. STATE
Nevada

13. APPROX. STARTING DATE
Unknown

14. ACRES ASSIGNED (WELL SPACING)
1,280.00 acres

18. DRILLING MEDIA AND CHARACTERISTICS: AIR WATER () MUD FOAM Other ()

19. PROPOSED DEPTH
MEASURED: 2,000-8,000'
TRUE VERTICAL: 2,000-8,000'

20. ELEVATIONS: ESTIMATED FINAL () 5,940'
REFERENCE DATUM: GR NAT () DF () KB () RT ()
CASINGHEAD FLANGE () OTHER ()

21. EXISTING AND/OR PROPOSED CASING AND CEMENTING PROGRAM (List existing program first, followed by proposed program, and separate by a sufficient space to clearly distinguish the two programs)

SIZE OF HOLE	SIZE OF CASING	WEIGHT PER FOOT	COUPLING (Collars & Threads)	GRADE	SETTING DEPTH	QUANTITY OF CEMENT
Refer to Proposed Plan of Exploration						

22. PROPOSED WORK SUMMARY

Refer to Proposed Plan of Exploration -
 Drilling Program I (thermal gradient wells).
 Drilling Program II (diamond drill test wells).
 Drilling Program III (large oil field rig).

(Use additional space on reverse side of form)

23. Wendy E. Merrill Supervisor, Land Records 11/10/80
 SIGNED Wendy E. Merrill TITLE and Permits DATE

APPROVED BY _____ TITLE _____ DATE _____

CONDITIONS OF APPROVAL, IF ANY:

This permit is required by law (30 U.S.C. 1023); regulations: 30 CFR 270.71; Federal Geothermal Lease Terms and Stipulations and other regulatory requirements. The United States Criminal Code (18 U.S.C. 1001) makes it a criminal offense to make a willfully false statement or representation to any Department or Agency of the United States as to any matter within its jurisdiction.

(See instructions on reverse side)

GEOTHERMAL DRILLING PERMIT

The U.S. Geological Survey requires this form or other Supervisor approved form to be prepared and filed in accordance with requisite attachments with the Supervisor. The Supervisor must approve this permit prior to any lease operation.

1a. TYPE OF WORK: DRILL NEW WELL XX RE-DRILL () DEEPEN () PUMP BACK () DIAGONALLY DRILL () OTHER ()

1b. WELL TYPE: PRODUCTION () INJECTION () HEAT EXCHANGE () OBSERVATION () WATER SUPPLY () OTHER XX
Geothermal test well

1c. WELL STATUS: New well

2. NAME OF LESSEE/OPERATOR
AMAX Exploration, Inc.

3. ADDRESS OF LESSEE/OPERATOR
7100 West 44th Avenue, Wheat Ridge, Colorado 80033

15. LOCATION OF WELL
At surface NW $\frac{1}{4}$ NW $\frac{1}{4}$, Section 16, T22N, R40E, MDBM, 950' from West line
At proposed prod. zone N/A 1000' from North line

16. DISTANCE FROM PROPOSED LOCATION TO NEAREST PROPERTY OR LEASE LINE
950' from West line of Section 16

17. DISTANCE FROM PROPOSED LOCATION TO NEAREST WELL, DRILLING, COMPLETED, OR APPLIED FOR ON THIS LEASE
4,000' from 66-8

4. LEASE SERIAL NO.
N-20073

5. SURFACE MANAGER: BLM () FS Center (X)
USGS

6. UNIT AGREEMENT NAME
McCoy

7. WELL NO. 22-16

8. PERMIT

9. FIELD OR AREA
Wildcat

10. SEC. T., R., E. & M.
NW $\frac{1}{4}$ NW $\frac{1}{4}$, Section 16, T22N, R40E, MDBM

11. COUNTY
Churchill

12. STATE
Nevada

13. APPROX. STARTING DATE
Unknown

14. ACRES ASSIGNED (WELL SPACING)
1,280.00 acres

18. DRILLING MEDIA AND CHARACTERISTICS: AIR XX WATER () MUD XX FOAM XX OTHER ()

19. PROPOSED DEPTH
MEASURED: 2,000-8,000'
TRUE VERTICAL: 2,000-8,000'

20. ELEVATIONS: ESTIMATED XX FINAL () 6,080'
REFERENCE DATUM: GR XX MAT () OF () KB () RT () CASINGHEAD FLANGE () OTHER ()

21. EXISTING AND/OR PROPOSED CASING AND CEMENTING PROGRAM (List existing program first, followed by proposed program, and separate by a sufficient space to clearly distinguish the two programs)

SIZE OF HOLE	SIZE OF CASING	WEIGHT PER FOOT	COUPLING (Collars & Threads)	GRADE	SETTING DEPTH	QUANTITY OF CEMENT
Refer to Proposed Plan of Exploration						

22. PROPOSED WORK SUMMARY

Refer to Proposed Plan of Exploration -
Drilling Program I (thermal gradient wells).
Drilling Program II (diamond drill test wells).
Drilling Program III (large oil field rig).

(Use additional space on reverse side of form)

23. Wendy E. Merrill Supervisor, Land Records 11/10/80
SIGNED Wendy E. Merrill TITLE and Permits DATE

APPROVED BY _____ TITLE _____ DATE _____

CONDITIONS OF APPROVAL, IF ANY:

This permit is required by law (30 U.S.C. 1023); regulations: 30 CFR 270.11; Federal Geothermal Lease Terms and Stipulations and other regulatory requirements. The United States Criminal Code (18 U.S.C. 1001) makes it a criminal offense to make a willfully false statement or representation to any Department or Agency of the United States as to any matter within its jurisdiction.

(See instructions on reverse side)

GEOTHERMAL DRILLING PERMIT

The U.S. Geological Survey requires this form or other Supervisor approved form to be prepared and filed in duplicate with requisite attachments with the Supervisor. The Supervisor must approve this permit prior to any lease operation.

4. LEASE SERIAL NO. N-18851

5. SURVISE MAJOR: BLM () FS Other (X) USGS

6. UNIT AGREEMENT NAME McCoy

7. WELL NO. 58-17

8. PERMIT Wildcat

9. FIELD OR AREA SW $\frac{1}{4}$ SE $\frac{1}{4}$, Section 17, T22N, R40E, MDBM

10. SEC. T., R., S. & M. SW $\frac{1}{4}$ SE $\frac{1}{4}$, Section 17, T22N, R40E, MDBM

11. COUNTY Churchill

12. STATE Nevada

13. APPROX. STARTING DATE Unknown

14. ACRES ASSIGNED (WELL SPACING) 1,268.32 acres

1. TYPE OF WORK: DRILL NEW WELL XX RE-DRILL () DEEPEN () PLOT BACK () DIRECTIONALLY DRILL () OTHER ()

2. WELL TYPE: PRODUCTION () INJECTION () HEAT EXCHANGE () OBSERVATION () WATER SUPPLY () OTHER XX Geothermal test well

3. WELL STATUS: New well

1. NAME OF LESSEE, OPERATOR AMAX Exploration, Inc.

2. ADDRESS OF LESSEE/OPERATOR 7100 West 44th Avenue, Wheat Ridge, Colorado 80033

1. LOCATION OF WELL
At surface SW $\frac{1}{4}$ SE $\frac{1}{4}$, Section 17, T22N, R40E, MDBM, 300' from South line
At proposed prod. zone N/A 2250' from East line

1. DISTANCE FROM PROPOSED LOCATION TO NEAREST PROPERTY OR LEASE LINE 300' from South line of Section 17

1. DISTANCE FROM PROPOSED LOCATION TO NEAREST WELL, DRILLING, COMPLETED, OR APPLIED FOR ON THIS LEASE 6,525' from 66-8

1. DRILLING MEDIA AND CHARACTERISTICS: AIR XX WATER () MUD XX FOAM XX Other ()

1. PROPOSED DEPTH MEASURED: 2,000-8,000'
TRUE VERTICAL: 2,000-8,000'

1. ELEVATIONS: ESTIMATED XX FINAL () 5,980'

REFERENCE DATUM: GR XX MAM () OF () KB () RT () CASINGHEAD FLANGE () OTHER ()

21. EXISTING AND/OR PROPOSED CASING AND CEMENTING PROGRAM (List existing program first, followed by proposed program, and separate by a sufficient space to clearly distinguish the two programs)

SIZE OF HOLE	SIZE OF CASING	WEIGHT PER FOOT	COUPLING (Collars & Threads)	GRADE	SETTING DEPTH	QUANTITY OF CEMENT
Refer to Proposed Plan of Exploration						

22. PROPOSED WORK SUMMARY

Refer to Proposed Plan of Exploration -
Drilling Program I (thermal gradient wells).
Drilling Program II (diamond drill test wells).
Drilling Program III (large oil field rig).

(Use additional space on reverse side of form)

23. Wendy E. Merrill Supervisor, Land Records 11/10/80
SIGNED Wendy E. Merrill TITLE and Permits DATE

(This space for Federal Use)
APPROVED BY _____ TITLE _____ DATE _____

CONDITIONS OF APPROVAL, IF ANY:

This permit is required by law (30 U.S.C. 1021); regulations: 30 CFR 270.11; Federal Geothermal Lease Terms and Stipulations and other regulatory requirements. The United States Criminal Code (18 U.S.C. 1021) makes it a criminal offense to make a willfully false statement or representation to any Department or Agency of the United States as to any matter within its jurisdiction.

(See instructions on reverse side)

GEOTHERMAL DRILLING PERMIT

The U.S. Geological Survey requires this form or other Supervisor approved form to be prepared and filed in accordance with requisite attachments with the Supervisor. The Supervisor must approve this permit prior to any lease operation.

14. TYPE OF WORK: DRILL NEW WELL REDRILL () DEEPEN () PUMP BACK () DIRECTIONALLY DRILL () OTHER ()

15. WELL TYPE: PRODUCTION () INJECTION () HEAT EXCHANGE () OBSERVATION () WATER SUPPLY () OTHER Geothermal test well

16. WELL STATE: New well

17. NAME OF LESSEE/OPERATOR
AMAX Exploration, Inc.

18. ADDRESS OF LESSEE/OPERATOR
7100 West 44th Avenue, Wheat Ridge, Colorado 80033

19. LOCATION OF WELL
At surface SE 1/4 SW 1/4, Section 16, T22N, R40E, MDBM, 2350' from West line
At proposed prod. zone N/A 1000' from South line

16. DISTANCE FROM PROPOSED LOCATION TO NEAREST PROPERTY OR LEASE LINE
1,000' from South line of Section 16

17. DISTANCE FROM PROPOSED LOCATION TO NEAREST WELL, DRILLING, COMPLETED, OR APPLIED FOR ON THIS LEASE
7,300' from 66-8

4. LEASE SPECIAL NO.
N-20073

5. SURFACE MANAGER: BLM () FS
USGS Center (X)

6. UNIT AGREEMENT NAME
McCoy

7. WELL NO. 47-16 8. PERMIT

9. FIELD OR AREA
Wildcat

10. SEC. T., R., S. & N.
SE 1/4 SW 1/4, Section 16, T22N, R40E, MDBM

11. COUNTY
Lander

12. STATE
Nevada

13. APPROX. STARTING DATE
Unknown

14. ACRES ASSIGNED (WELL SPACING)
1,280.00 acres

18. DRILLING MEDIA AND CHARACTERISTICS: AIR WATER () MUD FOAM OTHER ()

19. PROPOSED DEPTH
MEASURED: 2,000-8,000'
TRUE VERTICAL: 2,000-8,000'

20. ELEVATIONS: ESTIMATED FINAL () 6,040'
REFERENCE DATUM: GR MAT () DP () KB () RT ()
CASINGHEAD FLANGE () OTHER ()

21. EXISTING AND/OR PROPOSED CASING AND CEMENTING PROGRAM (List existing program first, followed by proposed program, and separate by a sufficient space to clearly distinguish the two programs)

SIZE OF HOLE	SIZE OF CASING	WEIGHT PER FOOT	COUPLING (Collars & Threads)	GRADE	SETTING DEPTH	QUANTITY OF CEMENT
Refer to Proposed Plan of Exploration						

22. PROPOSED WORK SUMMARY

Refer to Proposed Plan of Exploration -
Drilling Program I (thermal gradient wells).
Drilling Program II (diamond drill test wells).
Drilling Program III (large oil field rig).

(Use additional space on reverse side of form)

23. Wendy E. Merrill Supervisor, Land Records 11/10/80
SIGNED Wendy E. Merrill TITLE and Permits DATE

(This space for Federal Use)
APPROVED BY _____ TITLE _____ DATE _____

CONDITIONS OF APPROVAL, IF ANY:

A permit is required by law (30 U.S.C. 1021); regulations: 30 CFR 100.11; Federal Geothermal Lease Terms and Stipulations and other regulatory requirements. The United States Criminal Code (18 U.S.C. 1001) makes it a criminal offense to make a willfully false statement or representation to any Department or Agency of the United States as to any matter within its jurisdiction.

(See instructions on reverse side)

GEOTHERMAL DRILLING PERMIT

The U.S. Geological Survey requires this form or other Supervisor approved form to be prepared and filed in accordance with requisite attachments with the Supervisor. The Supervisor must approve this permit prior to any lease operation.

1a. TYPE OF WORK: DRILL NEW WELL RE-DRILL () SUSPEND () PUMP BACK () DI-RECTIONALLY DRILL () OTHER ()

1b. WELL TYPE: PRODUCTION () INJECTION () HEAT EXCHANGE () OBSERVATION () WATER SUPPLY () OTHER **Geothermal test well**

1c. WELL STATUS: **New well**

2. NAME OF LESSEE, OPERATOR
AMAX Exploration, Inc.

3. ADDRESS OF LESSEE/OPERATOR
7100 West 44th Avenue, Wheat Ridge, Colorado 80033

15. LOCATION OF WELL:
At surface **NW $\frac{1}{4}$ SE $\frac{1}{4}$, Section 20, T22N, R40E, MDBM, 2250' from East line**
At proposed prod. zone **N/A** **1600' from South line**

16. DISTANCE FROM PROPOSED LOCATION TO NEAREST PROPERTY OR LEASE LINE
1,600' from South line of Section 20

17. DISTANCE FROM PROPOSED LOCATION TO NEAREST WELL, DRILLING, COMPLETED, OR APPLIED FOR ON THIS LEASE
10,500' from 66-8

4. LEASE SERIAL NO.
N-19925

5. SURFACE MANAGER: BLM () FS
USGS **Genes (X)**

6. UNIT AGREEMENT NAME
McCoy

7. WELL NO. **56-20** 8. PERMIT

9. FIELD OR AREA
Wildcat

10. SEC. T., R., B. & M.
NW $\frac{1}{4}$ SE $\frac{1}{4}$, Section 20, T22N, R40E, MDBM

11. COUNTY
Churchill

12. STATE
Nevada

13. APPROX. STARTING DATE
Unknown

14. ACRES ASSIGNED (WELL SPACING)
1,920.00 acres

18. DRILLING MEDIA AND CHARACTERISTICS: AIR WATER () MUD FOAM Other ()

19. PROPOSED DEPTH
MEASURED: **2,000-8,000'**
TRUE VERTICAL: **2,000-8,000'**

20. ELEVATIONS: ESTIMATED FINAL () **6,280'**
REFERENCE DATUM: GR MAT () OF () KB () RT () CASINGHEAD FLANGE () OTHER ()

21. EXISTING AND/OR PROPOSED CASING AND CEMENTING PROGRAM (List existing program first, followed by proposed program, and separate by a sufficient space to clearly distinguish the two programs)

SIZE OF HOLE	SIZE OF CASING	WEIGHT PER FOOT	COUPLING (Collars & Threads)	GRADE	SETTING DEPTH	QUANTITY OF CEMENT
Refer to Proposed Plan of Exploration						

22. PROPOSED WORK SUMMARY

Refer to Proposed Plan of Exploration -
Drilling Program I (thermal gradient wells).
Drilling Program II (diamond drill test wells).
Drilling Program III (large oil field rig).

(Use additional space on reverse side of form)

23. **Wendy E. Merrill** Supervisor, Land Records **11/10/80**
SIGNED **Wendy E. Merrill** TITLE **and Permits** DATE

APPROVED BY _____ TITLE _____ DATE _____

CONDITIONS OF APPROVAL, IF ANY:

This permit is required by law (30 U.S.C. 1023); regulations: 30 CFR 270.71; Federal Geothermal Lease Terms and Stipulations and other regulatory requirements. The United States Criminal Code (18 U.S.C. 1001) makes it a criminal offense to make a willfully false statement or representation to any Department or Agency of the United States as to any matter within its jurisdiction.

(See instructions on reverse side)

GEOHERMAL DRILLING PERMIT

The U.S. Geological Survey requires this form or other Supervisor approved form to be prepared and filed in accordance with requisite attachments with the Supervisor. The Supervisor must approve this permit prior to any lease operation.

4. STATE SURVEY NO. N-18851	5. SURVEY MANAGER: BLM () FS USGS Geol (X)
6. UNIT AGREEMENT NAME McCoy	7. WELL NO. 54-17
8. FIELD OR AREA Wildcat	9. SEC. T., R., S. & M. SW$\frac{1}{4}$NE$\frac{1}{4}$, Section 17, T22N, R40E, MDBM
10. COUNTY Churchill	11. STATE Nevada
12. APPROX. STARTING DATE Unknown	13. ACRES ASSIGNED (WELL SPACING) 1,268.32 acres

14. TYPE OF WORK: DRILL NEW WELL REGRIND () DEEPEN () PLOT BACK () DIFFERENTIALLY DRILL () OTHER ()

15. WELL TYPE: PRODUCTION () INJECTION () HEAT EXCHANGE () OBSERVATION () WATER SUPPLY () OTHER
Geothermal test well

16. WELL STATUS: **New well**

17. NAME OF LESSEE/OPERATOR
AMAX Exploration, Inc.

18. ADDRESS OF LESSEE/OPERATOR
7100 West 44th Avenue, Wheat Ridge, Colorado 80033

19. LOCATION OF WELL
At surface **SW $\frac{1}{4}$ NE $\frac{1}{4}$, Section 17, T22N, R40E, MDBM, 2300' from East line**
At proposed prod. zone **N/A** **2300' from North line**

20. DISTANCE FROM PROPOSED LOCATION TO NEAREST PROPERTY OR LEASE LINE
2,300' from North or East line of Section 17

21. DISTANCE FROM PROPOSED LOCATION TO NEAREST WELL, DRILLING, COMPLETED, OR APPLIED FOR ON THIS LEASE
3,900' from 66-8

22. DRILLING MEDIA AND CHARACTERISTICS: AIR WATER () MUD FOAM Other ()

23. PROPOSED DEPTH
MEASURED: **4,000-8,000'**
TRUE VERTICAL: **4,000-8,000'**

24. ELEVATIONS: ESTIMATED FINAL () **5,880'**

25. REFERENCE DATUM: GR MAT () OF () KB () RT () CASINGHEAD FLANGE () OTHER ()

26. EXISTING AND/OR PROPOSED CASING AND CEMENTING PROGRAM (List existing program first, followed by proposed program, and separate by a sufficient space to clearly distinguish the two programs:

SIZE OF HOLE	SIZE OF CASING	WEIGHT PER FOOT	COUPLING (Collars & Threads)	GRADE	SETTING DEPTH	QUANTITY OF CEMENT
Refer to Proposed Plan of Exploration						

27. PROPOSED WORK SUMMARY

Refer to Proposed Plan of Exploration -
Drilling Program I (thermal gradient wells).
Drilling Program II (diamond drill test wells).
Drilling Program III (large oil field rig).

(Use additional space on reverse side of form)

28. Wendy F. Merrill Supervisor, Land Records 11/10/80
SIGNED Wendy F. Merrill TITLE and Permits DATE

APPROVED BY _____ TITLE _____ DATE _____

CONDITIONS OF APPROVAL, IF ANY:

This permit is required by law (30 U.S.C. 1023); regulations: 30 CFR 270.71; Federal Geothermal Lease Terms and Stipulations and other regulatory requirements. The United States Criminal Code (18 U.S.C. 1001) makes it a criminal offense to make a willfully false statement or representation to any Department or Agency of the United States as to any matter within its jurisdiction.

(See instructions on reverse side)

GEOTHERMAL DRILLING PERMIT

The U.S. Geological Survey requires this form or other Supervisor approved form to be prepared and filed in accordance with requisite attachments with the Supervisor. The Supervisor must approve this permit prior to any lease operation.

1A. TYPE OF WORK: DRILL NEW WELL RE-DRILL () DEEPEN () PUMP BACK () DIRECTIONALLY DRILL () OTHER ()

1B. WELL TYPE: PRODUCTION () INJECTION () HEAT EXCHANGE () OBSERVATION () WATER SUPPLY () OTHER
Geothermal test well

1C. WELL STATUS: New well

2. NAME OF LESSEE/OPERATOR
AMAX Exploration, Inc.

3. ADDRESS OF LESSEE/OPERATOR
7100 West 44th Avenue, Wheat Ridge, Colorado 80033

15. LOCATION OF WELL
At surface NW $\frac{1}{4}$ SW $\frac{1}{4}$; Section 8, T22N, R40E, MDBM, 950' from West line
At proposed prod. zone N/A 1600' from South line

16. DISTANCE FROM PROPOSED LOCATION TO NEAREST PROPERTY OR LEASE LINE
950' from West line of Section 8

17. DISTANCE FROM PROPOSED LOCATION TO NEAREST WELL, DRILLING, COMPLETED, OR APPLIED FOR ON THIS LEASE
2,325' from 66-8

18. DRILLING MEDIA AND CHARACTERISTICS: AIR
WATER () MUD FOAM Other ()

19. PROPOSED DEPTH
MEASURED: 4,000-8,000'
TRUE VERTICAL: 4,000-8,000'

20. ELEVATIONS: ESTIMATED FINAL () 5,760'

REFERENCE DATUM: GR MAM () OF () KB () RT ()
CASING/HEAD FLANGE () OTHER ()

21. EXISTING AND/OR PROPOSED CASING AND CEMENTING PROGRAM (List existing program first, followed by proposed program, and separate by a sufficient space to clearly distinguish the two programs)

SIZE OF HOLE	SIZE OF CASING	WEIGHT PER FOOT	COUPLING (Collars & Threads)	GRADE	SETTING DEPTH	QUANTITY OF CEMENT
Refer to Proposed Plan of Exploration						

22. PROPOSED WORK SUMMARY

Refer to Proposed Plan of Exploration -
Drilling Program I (thermal gradient wells).
Drilling Program II (diamond drill test wells).
Drilling Program III (large oil field rig).

(Use additional space on reverse side of form)

23. Wendy E. Merrill Supervisor, Land Records 11/10/80
SIGNED Wendy E. Merrill TITLE and Permits DATE

(This space for Federal use)

APPROVED BY _____ TITLE _____ DATE _____

CONDITIONS OF APPROVAL, IF ANY:

This permit is required by law (30 U.S.C. 1023); regulations: 30 CFR 250.71; Federal Geothermal Lease Terms and Stipulations and other regulatory requirements. The United States Criminal Code (18 U.S.C. 1001) makes it a criminal offense to make a willfully false statement or representation to any Department or Agency of the United States as to any matter within its jurisdiction.

(See instructions on reverse side)

GEOTHERMAL DRILLING PERMIT

The U.S. Geological Survey requires this form or other Supervisor approved form to be prepared and filed in accordance with requisite attachments with the Supervisor. The Supervisor must approve this permit prior to any lease operation.

1a. TYPE OF WORK: DRILL NEW WELL REGRILL () DEEPEN () PUMP BACK () DIAGONALLY DRILL () OTHER ()

1b. WELL TYPE: PRODUCTION () INJECTION () HEAT EXCHANGE () OBSERVATION () WATER SUPPLY () OTHER
Geothermal test well

1c. WELL STATUS: New well

1. NAME OF LESSEE/OPERATOR
AMAX Exploration, Inc.

3. ADDRESS OF LESSEE/OPERATOR
7100 West 44th Avenue, Wheat Ridge, Colorado 80033

15. LOCATION OF WELL
At surface NE 1/4 SW 1/4, Section 5, T22N, R40E, MDBM, 2400' from West line
At proposed prod. zone N/A 2250' from South line

16. DISTANCE FROM PROPOSED LOCATION TO NEAREST PROPERTY OR LEASE LINE
2250' from South line of Section 5

17. DISTANCE FROM PROPOSED LOCATION TO NEAREST WELL, DRILLING, COMPLETED, OR APPLIED FOR ON THIS LEASE
6,000' from 66-8

4. BUREAU SERIAL NO.
N-17451

5. SUPPLEMENTAL: BLD () FS ()
USGS ()
OTHER (X)

6. UNIT AGREEMENT NAME
McCoy

7. WELL NO.
45-5

8. FIELD OR AREA
Wildcat

10. SEC. T., R., B.M.
NE 1/4 SW 1/4, Section 5,
T22N, R40E, MDBM

11. COUNTY
Churchill

12. STATE
Nevada

13. APPROX. STARTING DATE
Unknown

14. ACRES ASSIGNED (WELL SPACING)
2,546.04 acres

18. DRILLING MEDIA AND CHARACTERISTICS: AIR
WATER () MUD FOAM Other ()

19. PROPOSED DEPTH
MEASURED: 5,000-8,000'
TRUE VERTICAL: 5,000-8,000'

20. ELEVATIONS: ESTIMATED FINAL () 5,680'

REFERENCE DATUM: GR MSL () OF () KB () RT ()
CASINGHEAD PLANCE () OTHER ()

21. EXISTING AND/OR PROPOSED CASING AND CEMENTING PROGRAM (List existing program first, followed by proposed program, and separate by a sufficient space to clearly distinguish the two programs)

SIZE OF HOLE	SIZE OF CASING	WEIGHT PER FOOT	COUPLING (Collars & Threads)	GRADE	SETTING DEPTH	QUANTITY OF CEMENT
Refer to Proposed Plan of Exploration						

22. PROPOSED WORK SUMMARY

Refer to Proposed Plan of Exploration -
Drilling Program I (thermal gradient wells).
Drilling Program II (diamond drill test wells).
Drilling Program III (large oil field rig).

(Use additional space on reverse side of form)

23. Wendy E. Merrill Supervisor, Land Records 11/10/80
SIGNED Wendy E. Merrill TITLE and Permits DATE

APPROVED BY _____ TITLE _____ DATE _____

CONDITIONS OF APPROVAL, IF ANY:

This permit is required by law (30 U.S.C. 1023); regulations; 30 CFR 270.71; Federal Geothermal Lease Terms and Stipulations and other regulatory requirements. The United States Criminal Code (18 U.S.C. 1001) makes it a criminal offense to make a willfully false statement or representation to any Department or Agency of the United States as to any matter within its jurisdiction.

(See instructions on reverse side)

GEOTHERMAL DRILLING PERMIT

The U.S. Geological Survey requires this form or other Supervisor approved form to be prepared and filed in triplicate with requisite attachments with the Supervisor. The Supervisor must approve this permit prior to any lease operation.

1a. TYPE OF WORK: DRILL NEW WELL REWORK DEEPEN PUMP BACK DIAPHRAGMALLY DRILL OTHER

1b. WELL TYPE: PRODUCTION INJECTION HEAT EXCHANGE OBSERVATION WATER SUPPLY OTHER
Geothermal test well

1c. LEASE STATUS: New well

1. NAME OF LESSEE/OPERATOR
AMAX Exploration, Inc.

3. ADDRESS OF LESSEE/OPERATOR
7100 West 44th Avenue, Wheat Ridge, Colorado 80033

15. LOCATION OF WELL
At surface NE $\frac{1}{4}$ SW $\frac{1}{4}$, Section 7, T22N, R40E, MDBM, 1550' from West line
At proposed prod. zone N/A 1600' from South line

16. DISTANCE FROM PROPOSED LOCATION TO NEAREST PROPERTY OR LEASE LINE
1,550' from West line of Section 7

17. DISTANCE FROM PROPOSED LOCATION TO NEAREST WELL, DRILLING, COMPLETED, OR APPLIED FOR ON THIS LEASE
7,000' from 66-8

4. LEASE SERIAL NO.
N-18851

5. SURFACE MANAGER: BLM FS
USGS Other

6. UNIT AGREEMENT NAME
McCoy

7. WELL NO. 36-7 8. PERMIT NO.

9. FIELD OR AREA
Wildcat

10. SEC. T., R., S. & M.
NE $\frac{1}{4}$ SW $\frac{1}{4}$, Section 7, T22N, R40E, MDBM

11. COUNTY
Churchill

12. STATE
Nevada

13. APPROX. STARTING DATE
Unknown

14. ACRES ASSIGNED (WELL SPACING)
1,268.32 acres

18. DRILLING MEDIA AND CHARACTERISTICS: AIR WATER MUD FOAM Other

19. PROPOSED DEPTH
MEASURED: 6,000-8,000'
TRUE VERTICAL: 6,000-8,000'

20. ELEVATIONS: ESTIMATED FINAL 5,850'
REFERENCE DATUM: GR MAT OF KB RT
CASINGHEAD FLANGE OTHER

21. EXISTING AND/OR PROPOSED CASING AND CEMENTING PROGRAM (List existing program first, followed by proposed program, and separate by a sufficient space to clearly distinguish the two programs)

SIZE OF HOLE	SIZE OF CASING	WEIGHT PER FOOT	COUPLING (Collars & Threads)	GRADE	SETTING DEPTH	QUANTITY OF CEMENT
20"	13-3/8"				50'	
	9-5/8"				50'	
	2-3/8" tubing				200' to 800'	
6"-6 1/4"					Surface to TD	

22. PROPOSED WORK SUMMARY

Refer to Proposed Plan of Exploration - Drilling Program III (large rotary rig).

(Use additional space on reverse side of form)

23. Wendy E. Merrill Supervisor, Land Records 11/10/80
SIGNED Wendy E. Merrill TITLE and Permits DATE

APPROVED BY _____ TITLE _____ DATE _____

CONDITIONS OF APPROVAL, IF ANY:

This permit is required by law (30 U.S.C. 1023); regulations: 30 CFR 270.71; Federal Geothermal Lease Terms and Stipulations and other regulatory requirements. The United States Criminal Code (18 U.S.C. 1001) makes it a criminal offense to make a willfully false statement or representation to any Department or Agency of the United States as to any matter within its jurisdiction.

(See instructions on reverse side)