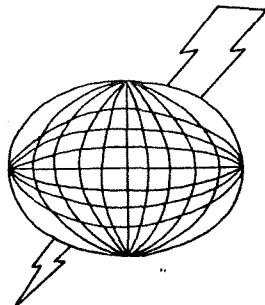


DATA
ELECTRICAL SURVEY
BURNS PROSPECT
HARNEY COUNTY, OREGON

Prepared for
AMAX EXPLORATION, INC.
Geothermal Group

January, 1976

by
Aldo Mazzella



TERRAPHYSICS
815 SOUTH TENTH STREET
RICHMOND, CALIFORNIA 94804
(415) 234-8961

List of Figures and Plates

Figure		Page
3.	Telluric profile, Line AA"	1
4.	Telluric profile, Line BB"	2
5.	Telluric profile, Line CC'	3
6.	Telluric profile, Line DD"	4

Plate (Plates are in the pockets)

1. Location Map
2. Apparent Resistivity Contour Map, 8 Hz
3. Apparent Resistivity Contour Map, 0.05 Hz

RELATIVE ELECTRIC FIELD

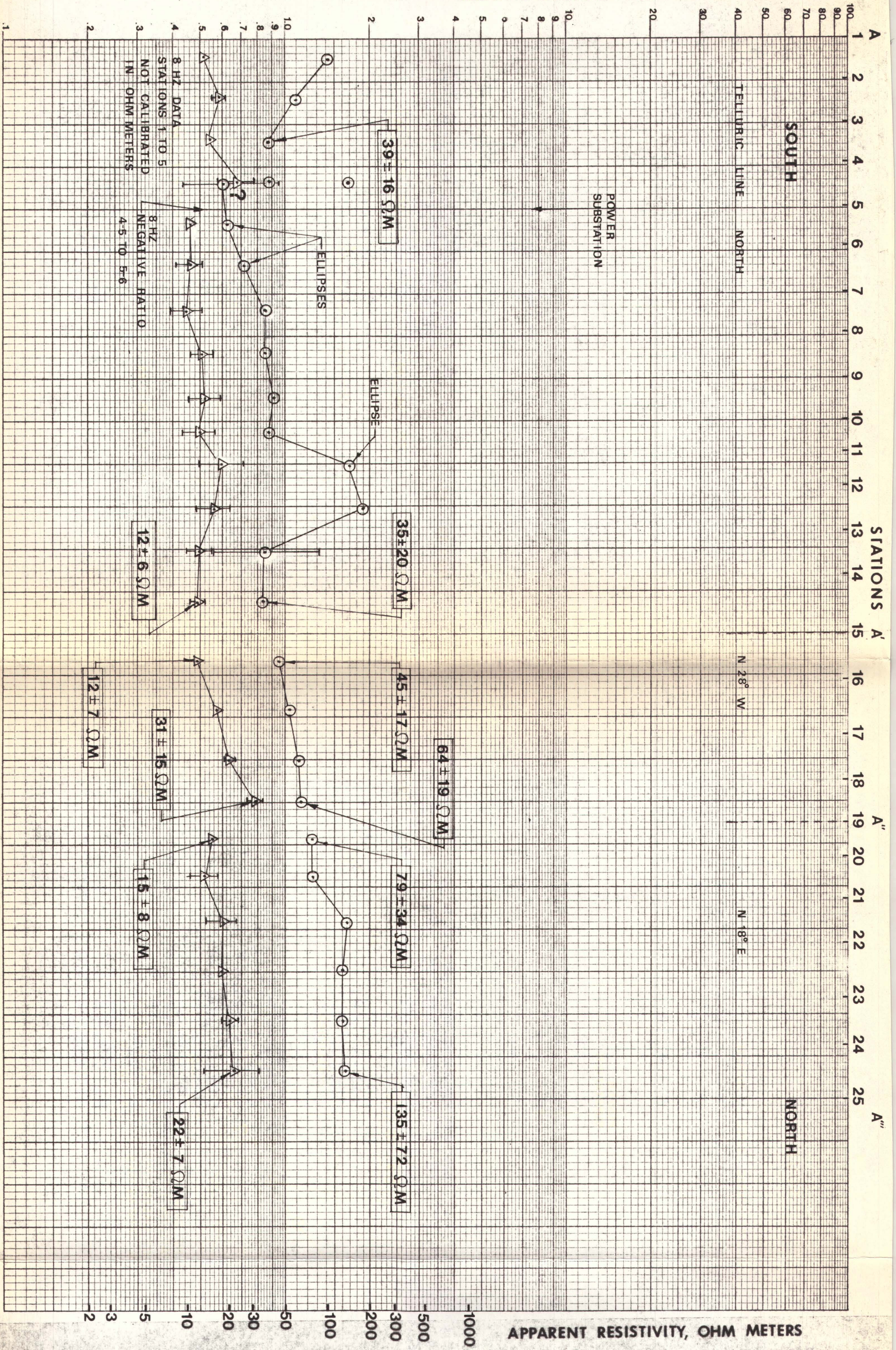


FIG. 3
 TELLURIC MAGNETOTELLURIC
 PROFILE
 BURNS, OREGON
 LINE AA'A''

○ 0.05 HZ
 △ 8.0 HZ
 SCALE 1:62500
 2 KILOMETERS

RELATIVE ELECTRIC FIELD

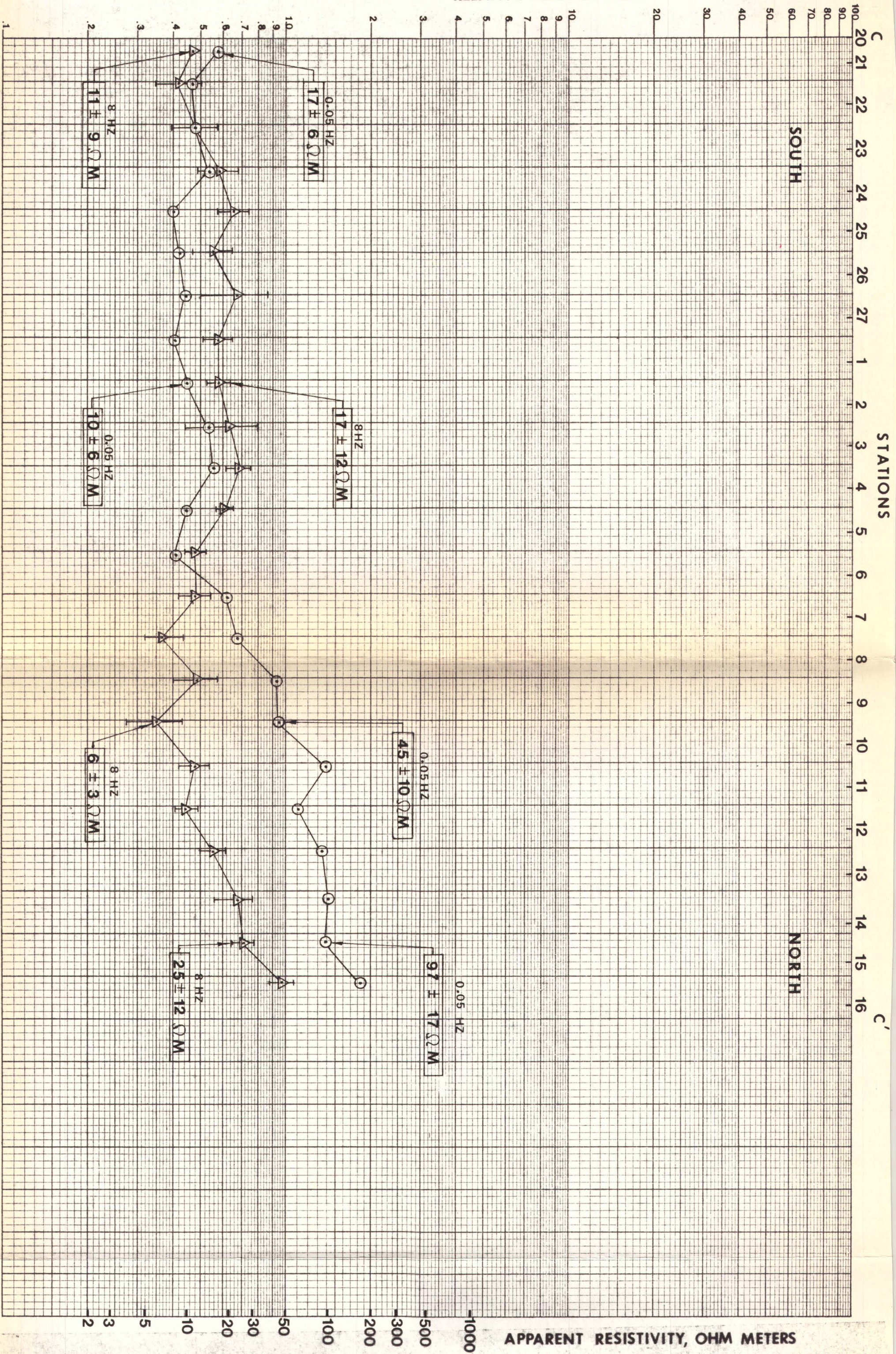


FIG. 5
 TELLURIC MAGNETOTELLURIC
 PROFILE
 BURNS, OREGON
 LINE CC'
 ○ 0.05 HZ
 △ 8.0 HZ
 SCALE 1:62500 2 KILOMETERS

RELATIVE ELECTRIC FIELD

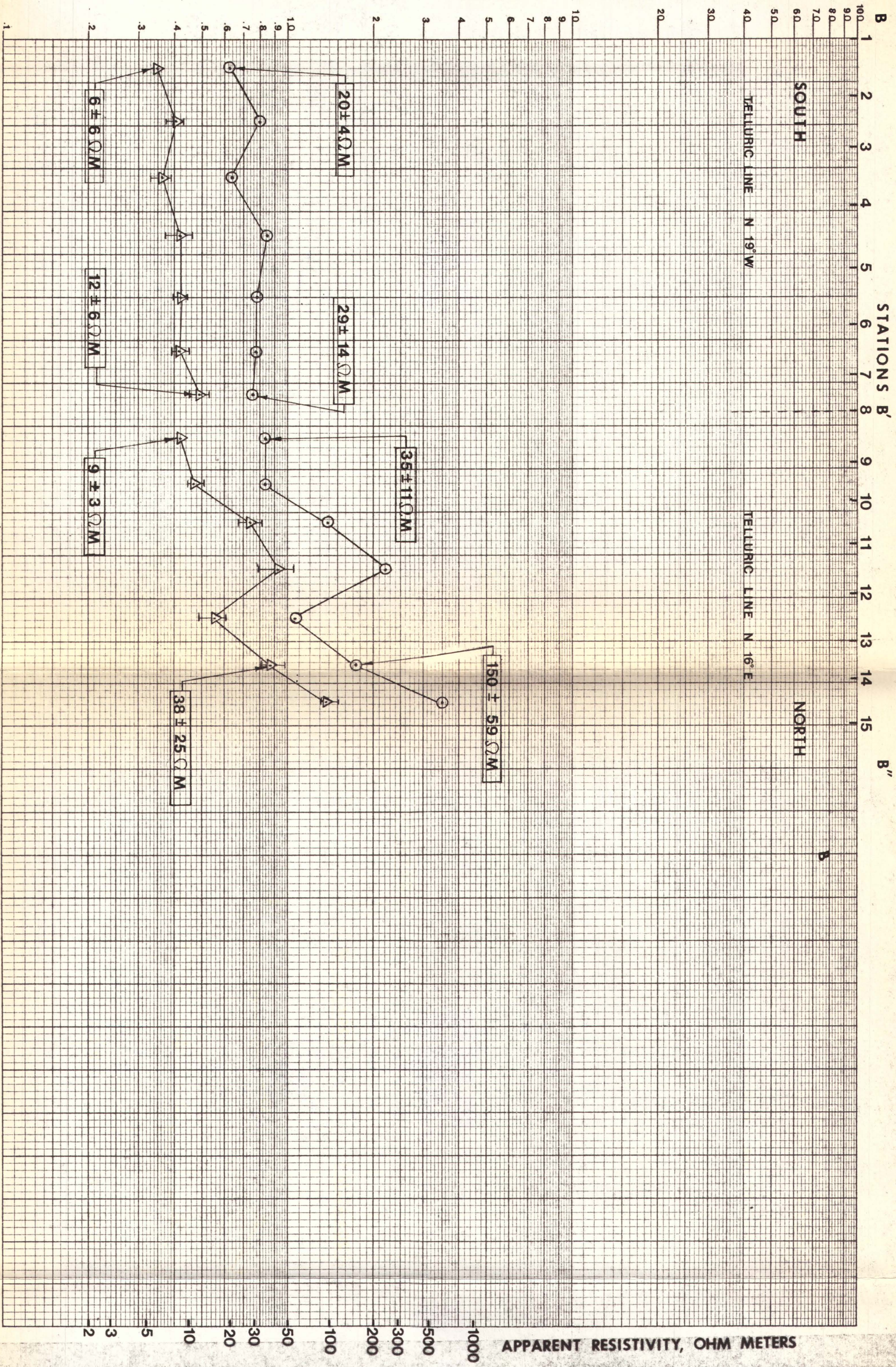


FIG. 4
 TELLURIC MAGNETOTELLURIC
 PROFILE
 BURNS, OREGON
 LINE BB'B''

○ 0.05 HZ
 △ 8.0 HZ
 SCALE 1:62500 2 KILOMETERS

K \pm Σ SEMI-LOGARITHMIC * 3 CYCLES X 70 DIVISIONS
KEUFFEL & ESSER CO. MADE IN U.S.A.

RELATIVE ELECTRIC FIELD

APPARENT RESISTIVITY, OHM METERS

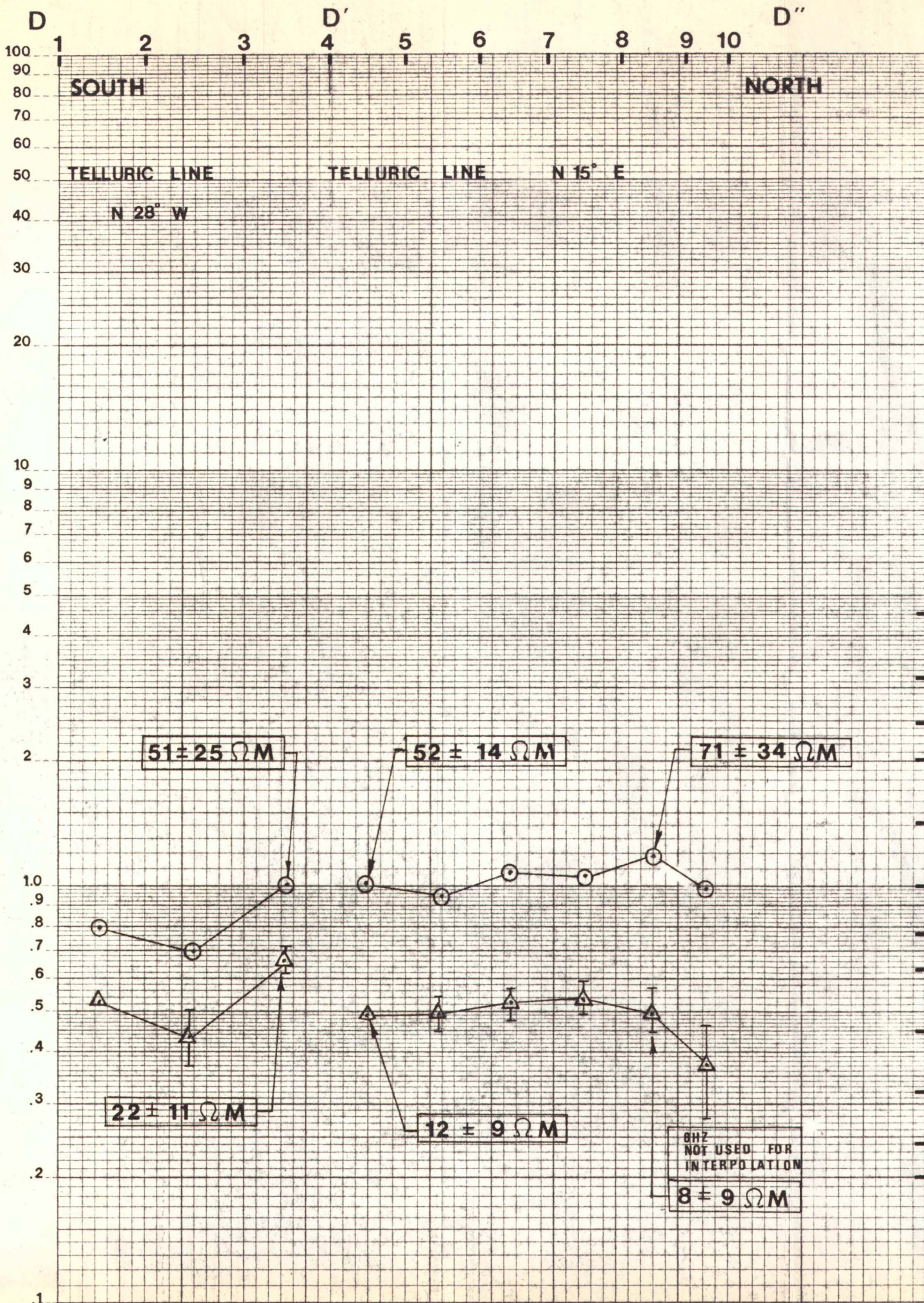


FIG. 6

TELLURIC MAGNETOTELLURIC
PROFILE

BURNS, OREGON

LINE DD'D''

⊙ 0.05 HZ

△ 8.0 HZ

SCALE 1:62500

0 5 1 2 KILOMETERS

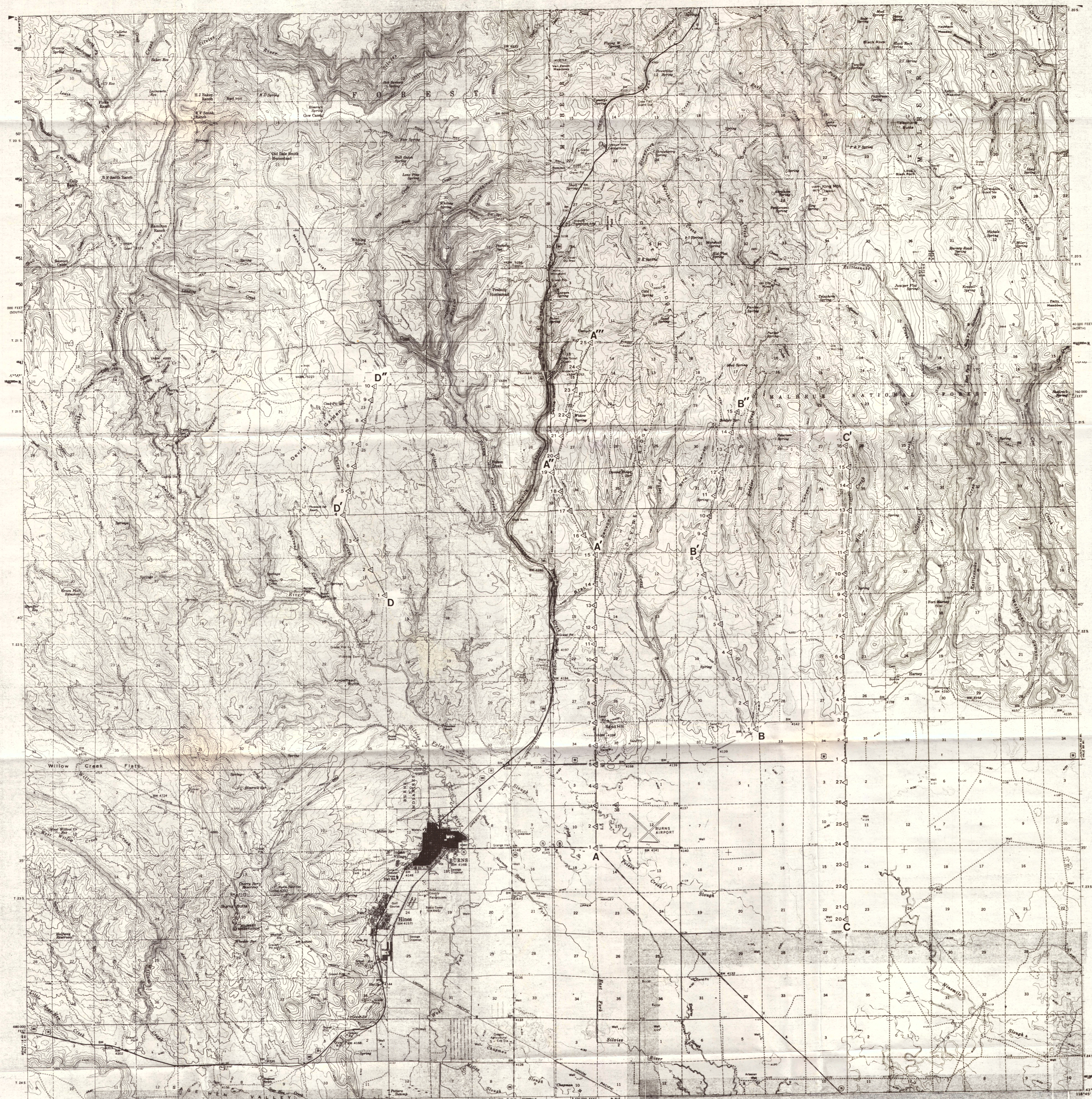


PLATE 1

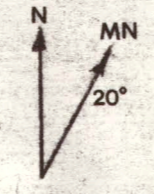
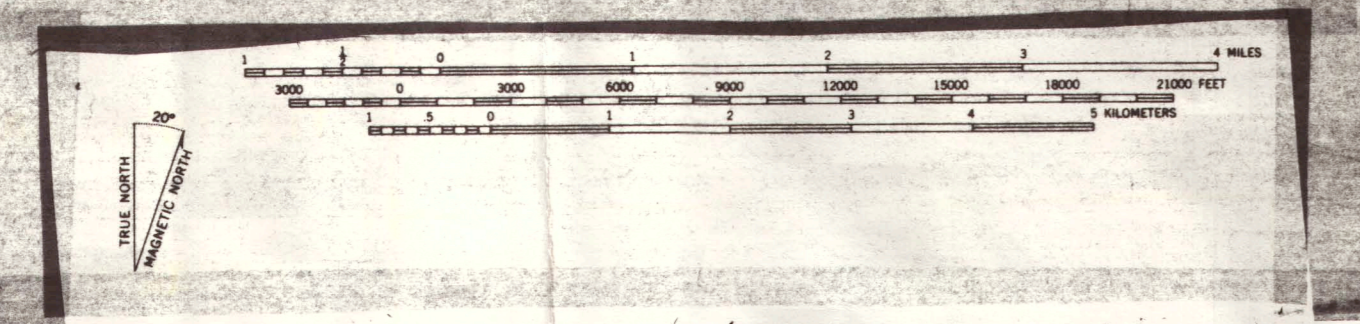
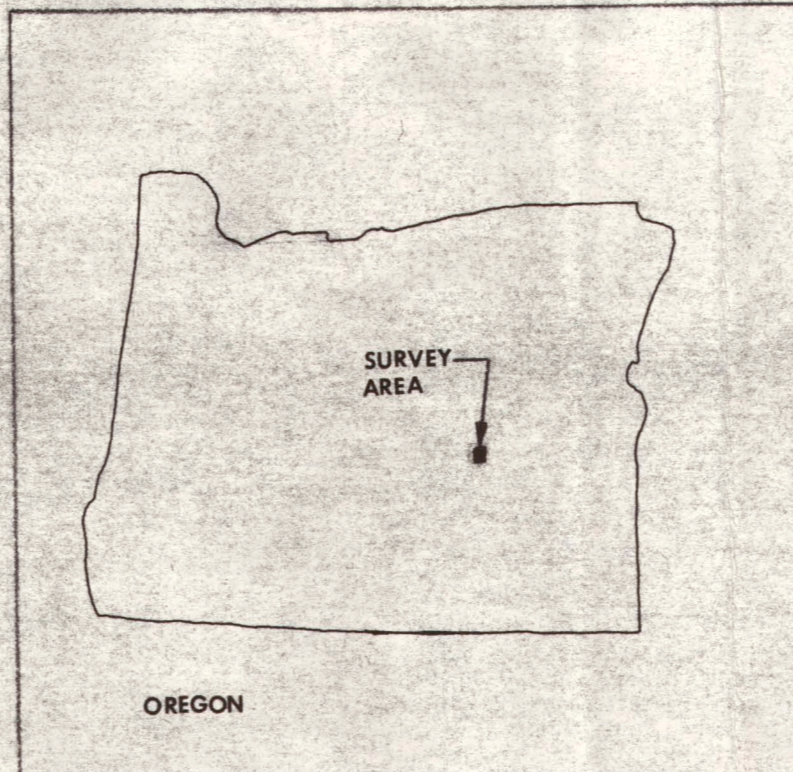
**TELLURIC AND MAGNETOTELLURIC
SURVEY**

LOCATION MAP

for
AMAX EXPLORATION, INC.
 (GEOTHERMAL GROUP)
 IN
BURNS PROSPECT
HARNEY COUNTY, OREGON

SCALE 1:62500 KILOMETERS
 PREPARED BY APPROVED BY DATE JANUARY, 1976

TERRAPHYSICS 815 South Tenth Street, Richmond, Ca. 94804



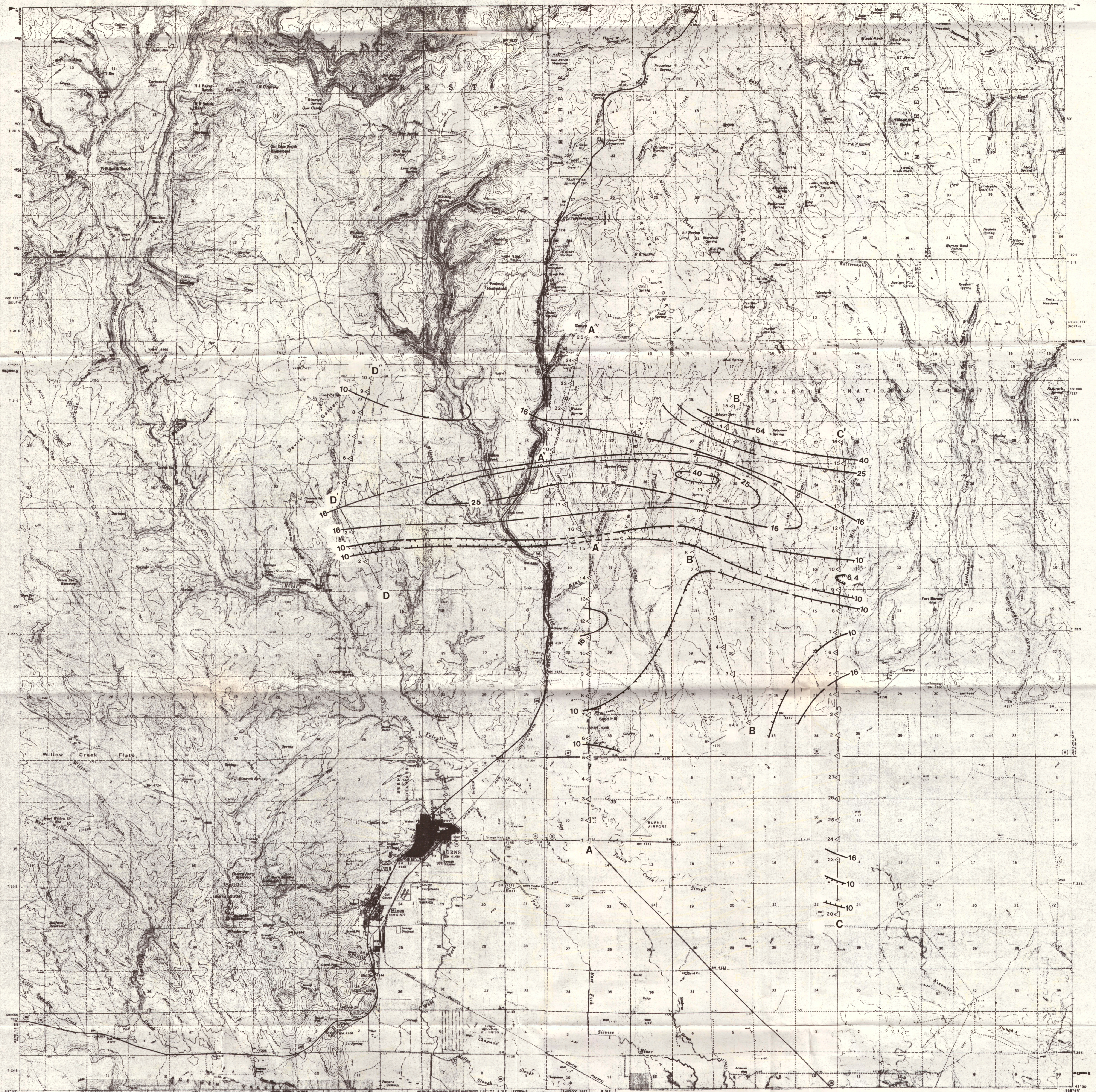

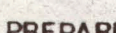



PLATE 2

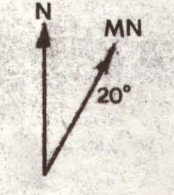
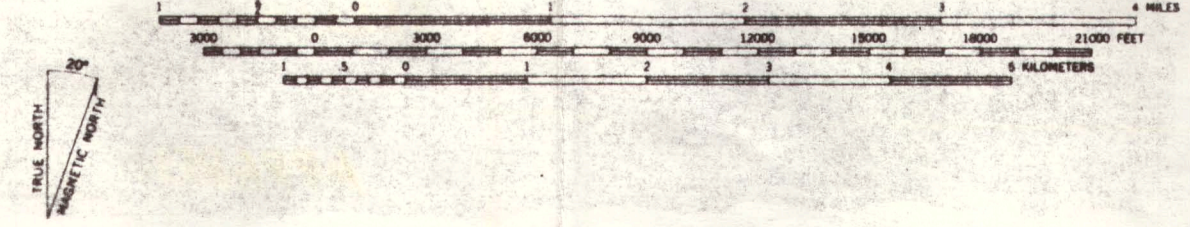
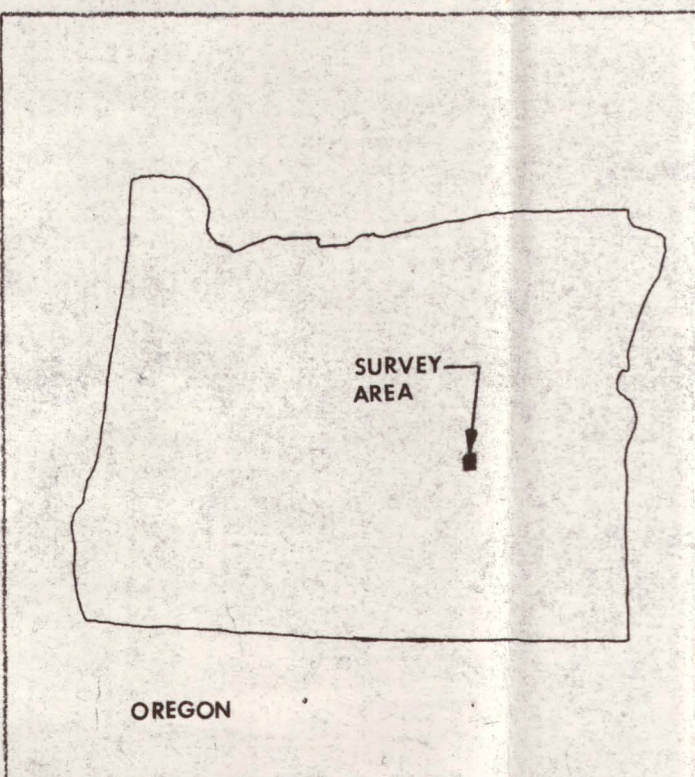
**TELLURIC AND MAGNETOTELLURIC
SURVEY**
APPARENT RESISTIVITY, 8 HZ
OHM METERS

for
AMAX EXPLORATION, INC.
(GEOTHERMAL GROUP)

IN
BURNS PROSPECT
HARNEY COUNTY, OREGON

SCALE 1:62500  2 KILOMETERS
PREPARED BY  APPROVED BY  DATE FEBRUARY, 1976

TERRAPHYSICS 815 South Tenth Street, Richmond, Ca. 94804



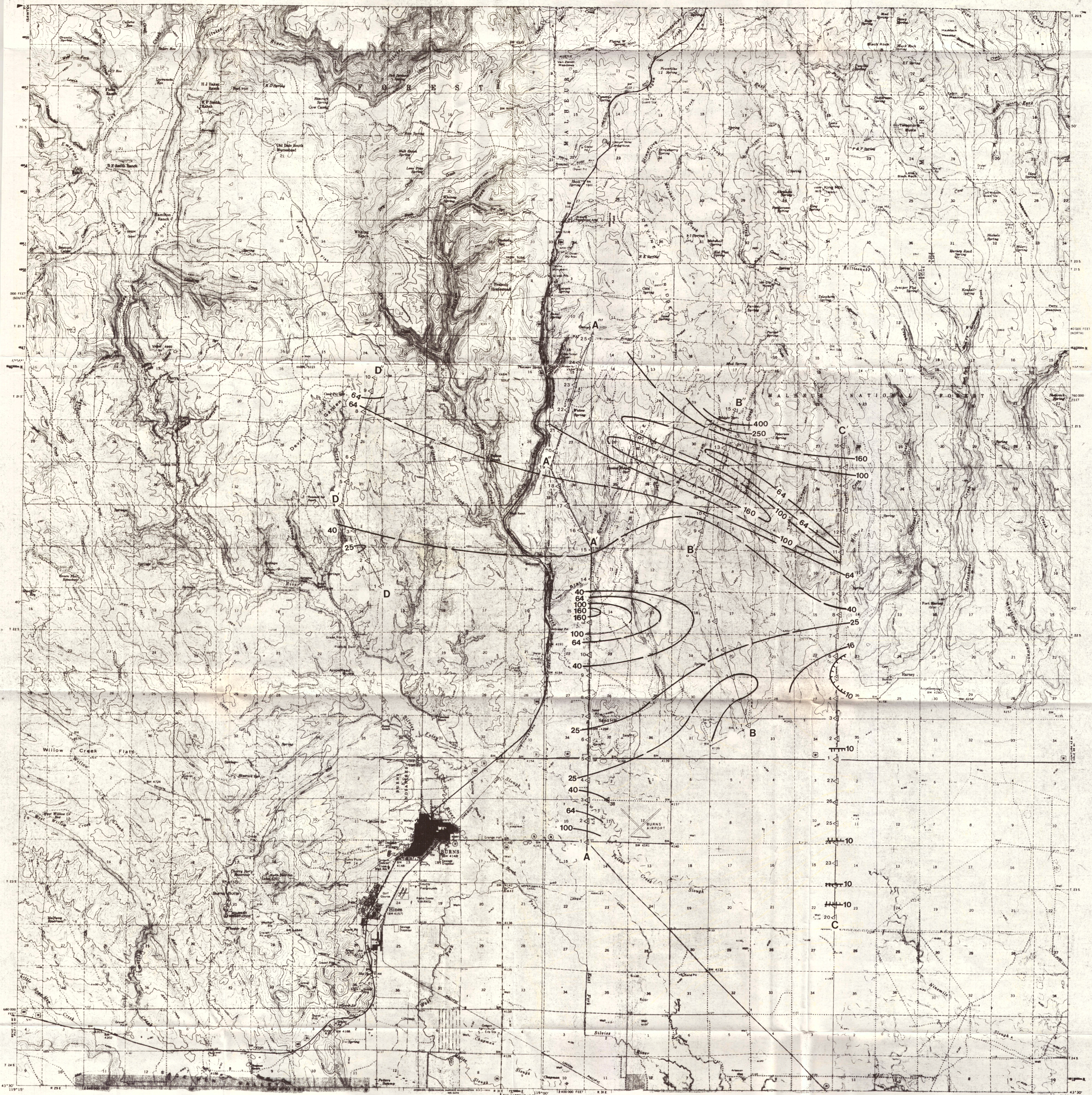


PLATE 3

TELLURIC AND MAGNETOTELLURIC
SURVEY
APPARENT RESISTIVITY, 0.05 HZ
OHM METERS

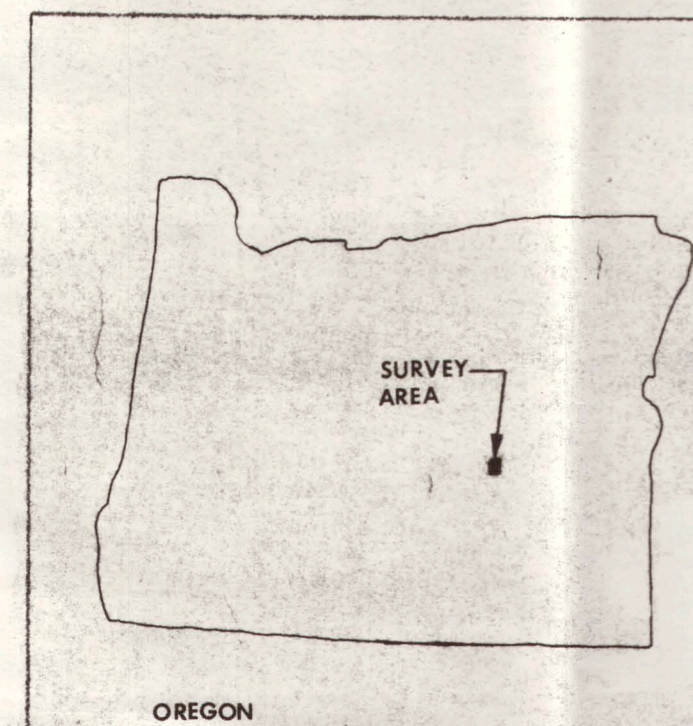
for
AMAX EXPLORATION, INC.
(GEOTHERMAL GROUP)

IN
BURNS PROSPECT
HARNEY COUNTY, OREGON

SCALE 1:62500

PREPARED BY *J.W.* APPROVED BY *J.W.* DATE FEBRUARY, 1976

TERRAPHYSICS 815 South Tenth Street, Richmond, Ca. 94804



OREGON