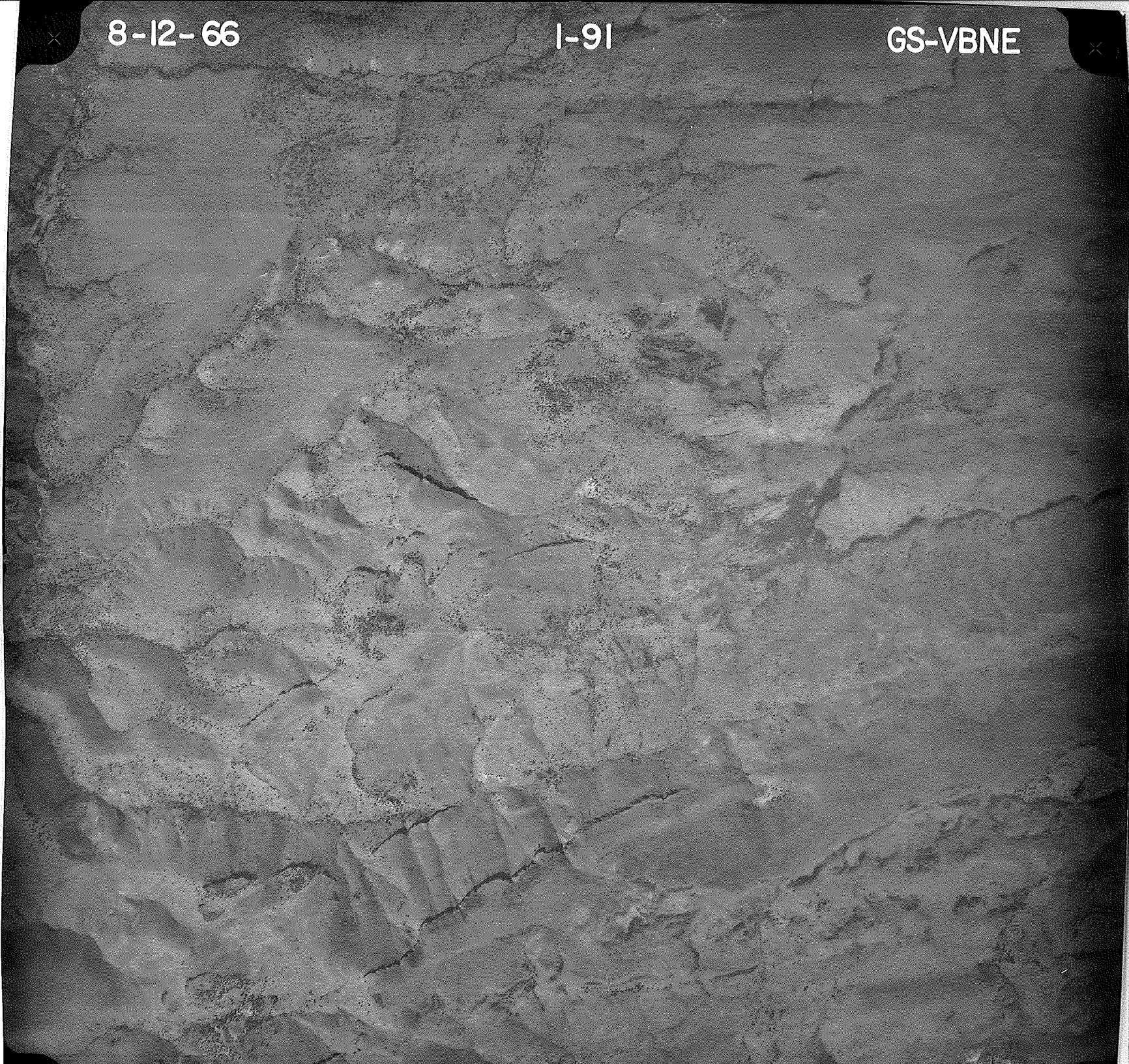


8-12-66

1-91

GS-VBNE



8-12-66

1-92

GS-VBNE



8-12-66

1-93

GS-VBNE



8-12-66

1-94

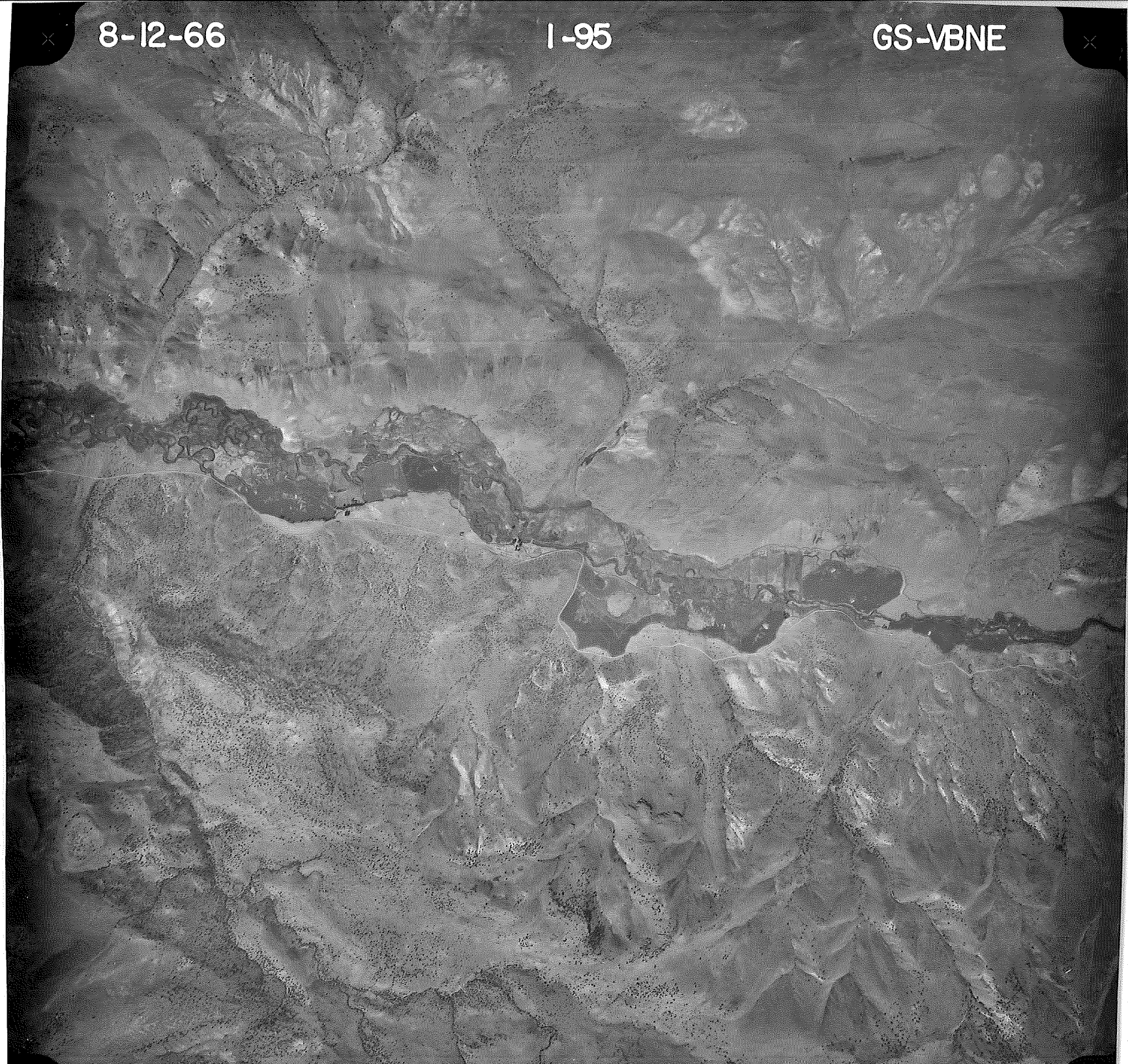
GS-VBNE



8-12-66

1-95

GS-VBNE



8-12-66

1-96

GS-VBNE



8-12-66

1-97

GS-VBNE



8-12-66

1-98

GS-VBNE



8-10-66

1:71

GS-VBNE



8-10-66

1-72

GS-VBNE



8-10-66

I-73

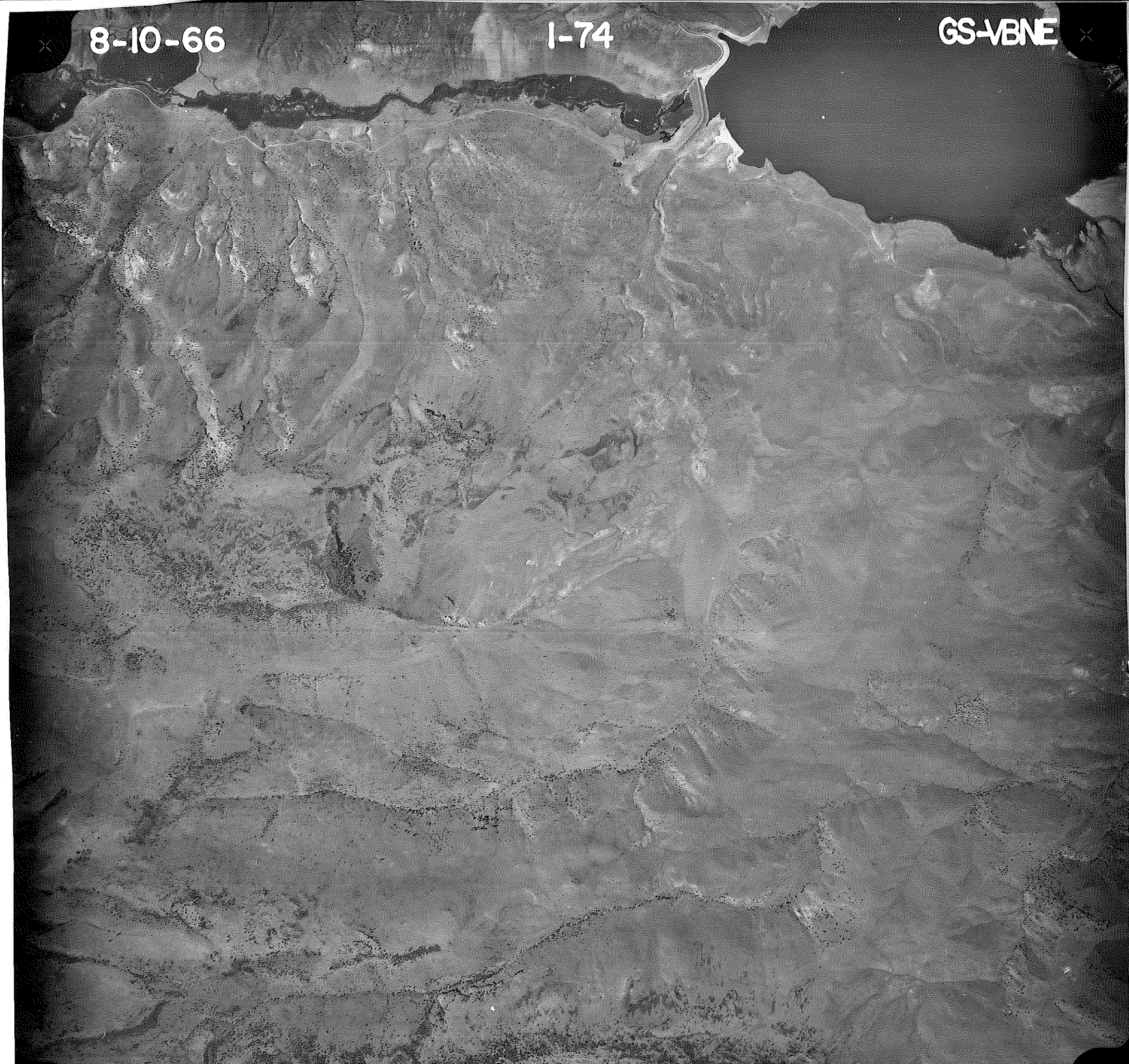
GS-VBNE



8-10-66

1-74

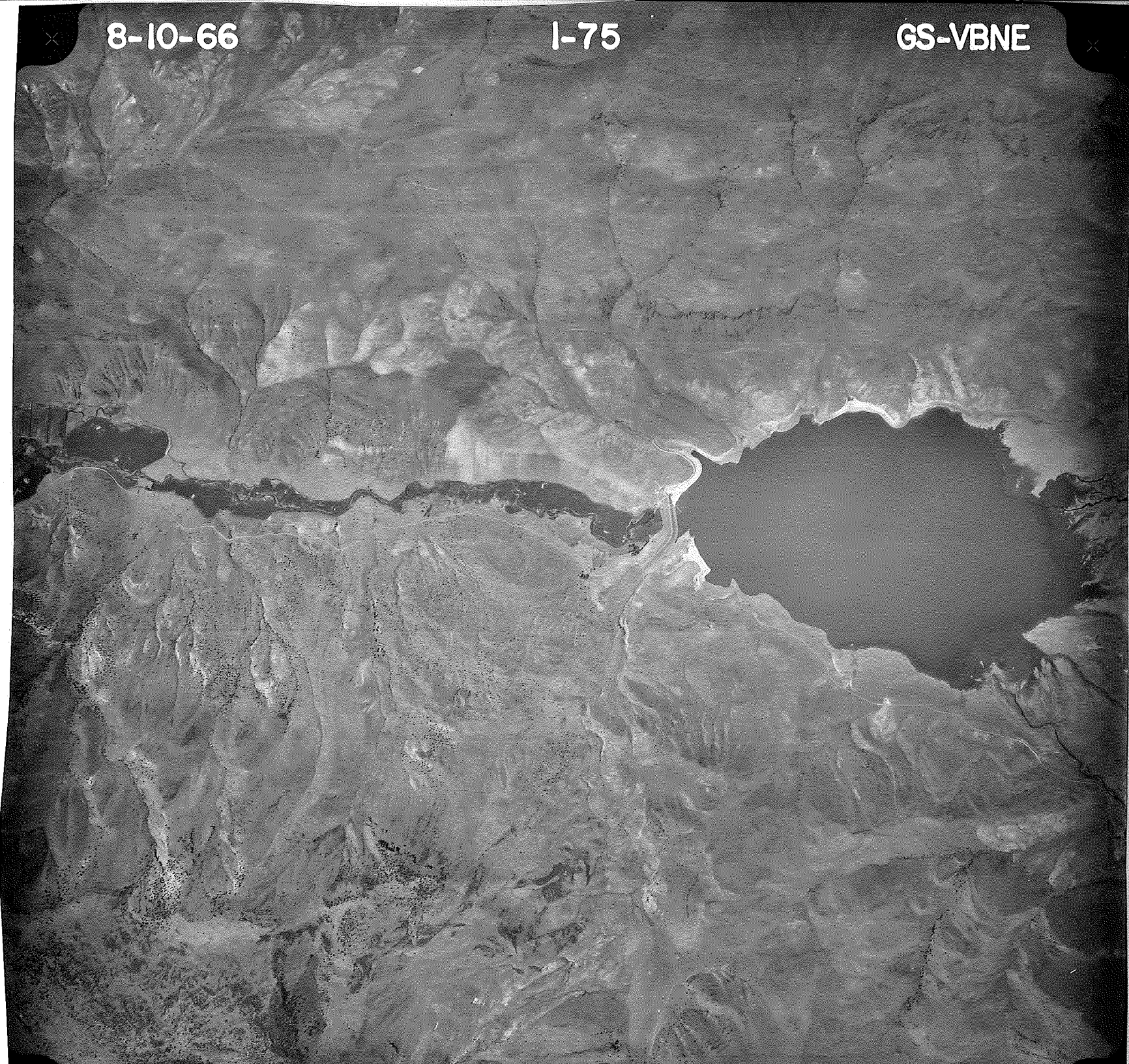
GS-VBNE



8-10-66

1-75

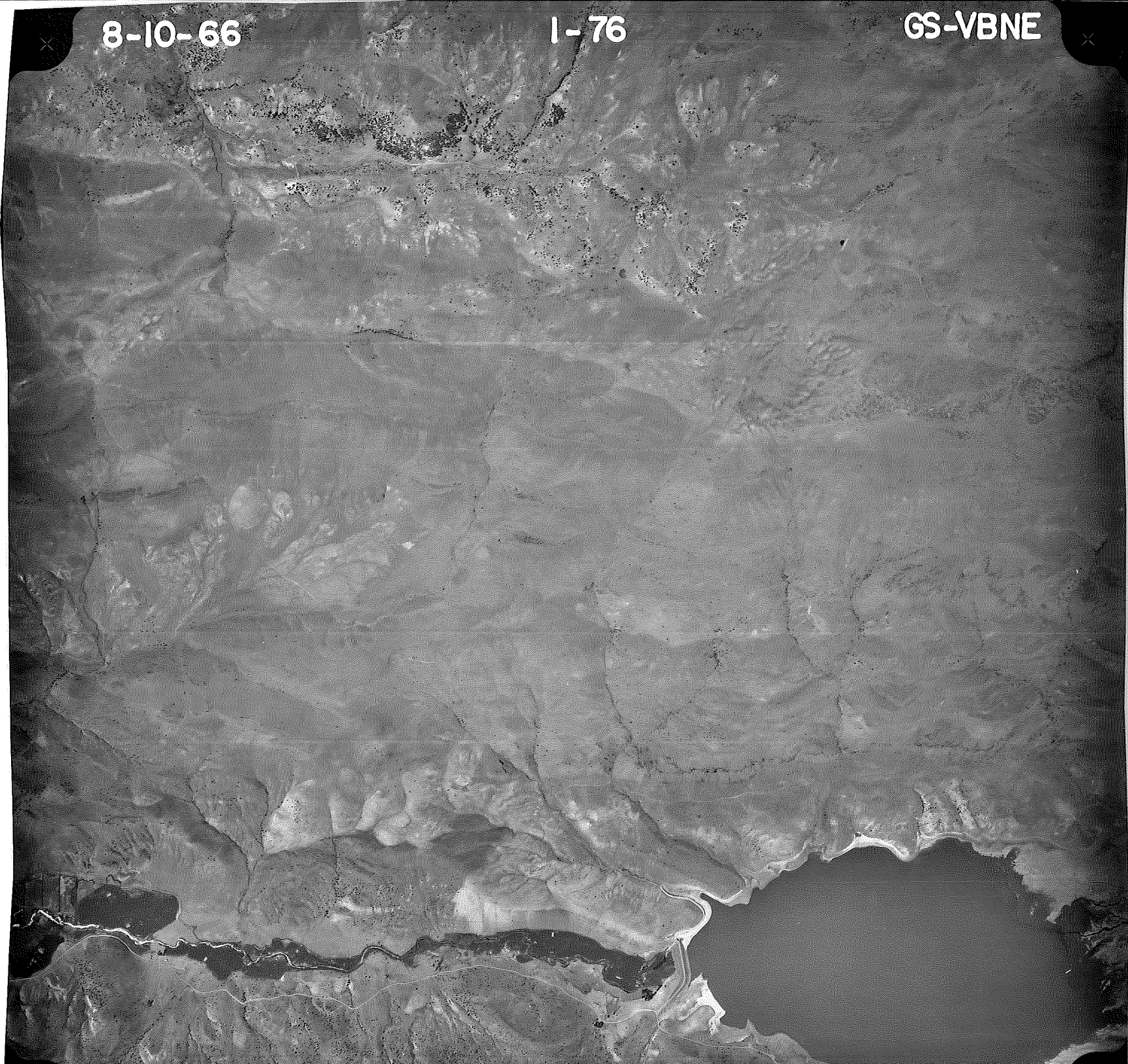
GS-VBNE



8-10-66

1-76

GS-VBNE



8-10-66

1-77

GS-VBNE



8-10-66

1-78

GS-VENE



8-10-66

1-49

GS-VBNE



8-10-66

1-48

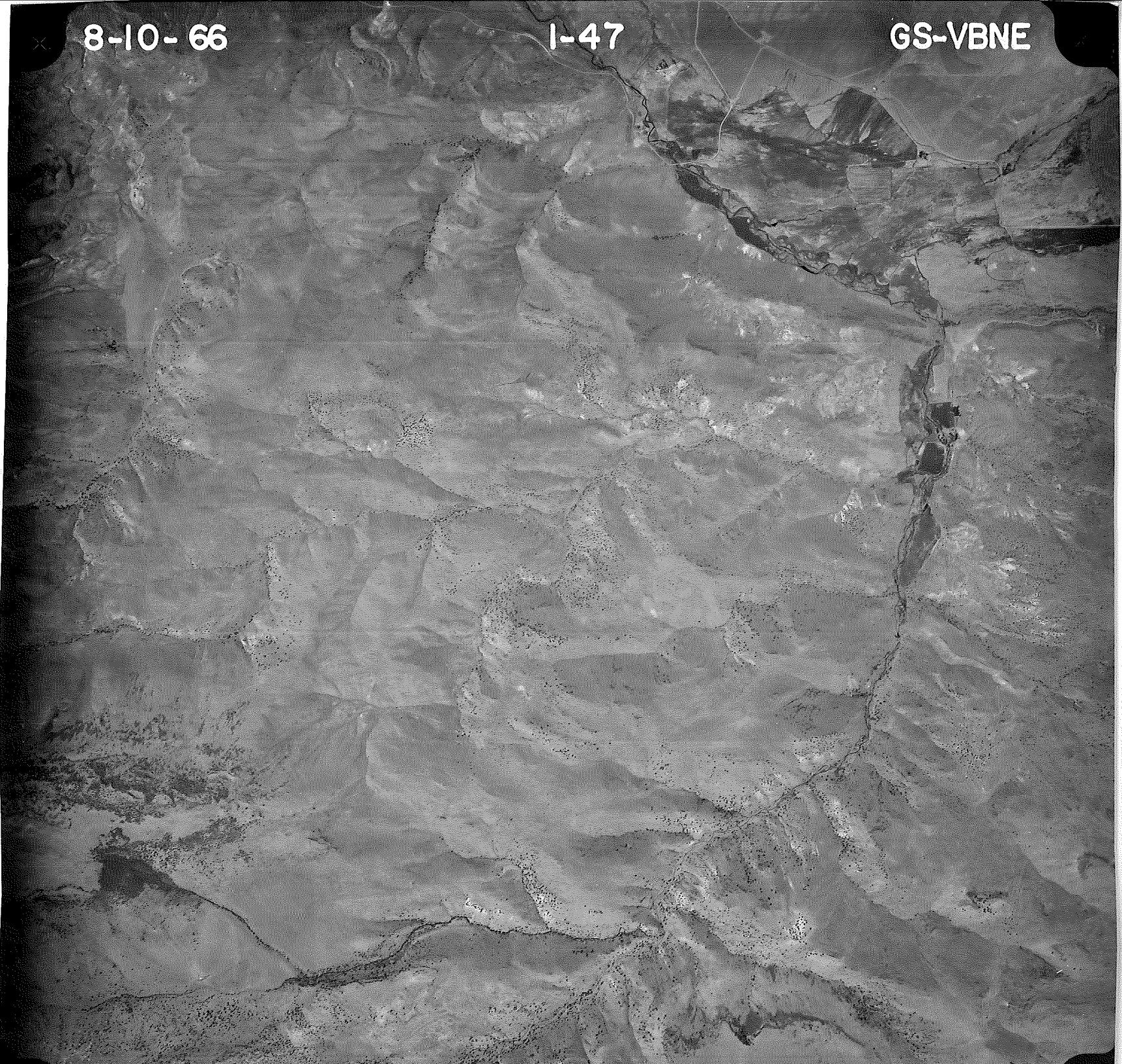
GS-VBNE



8-10-66

1-47

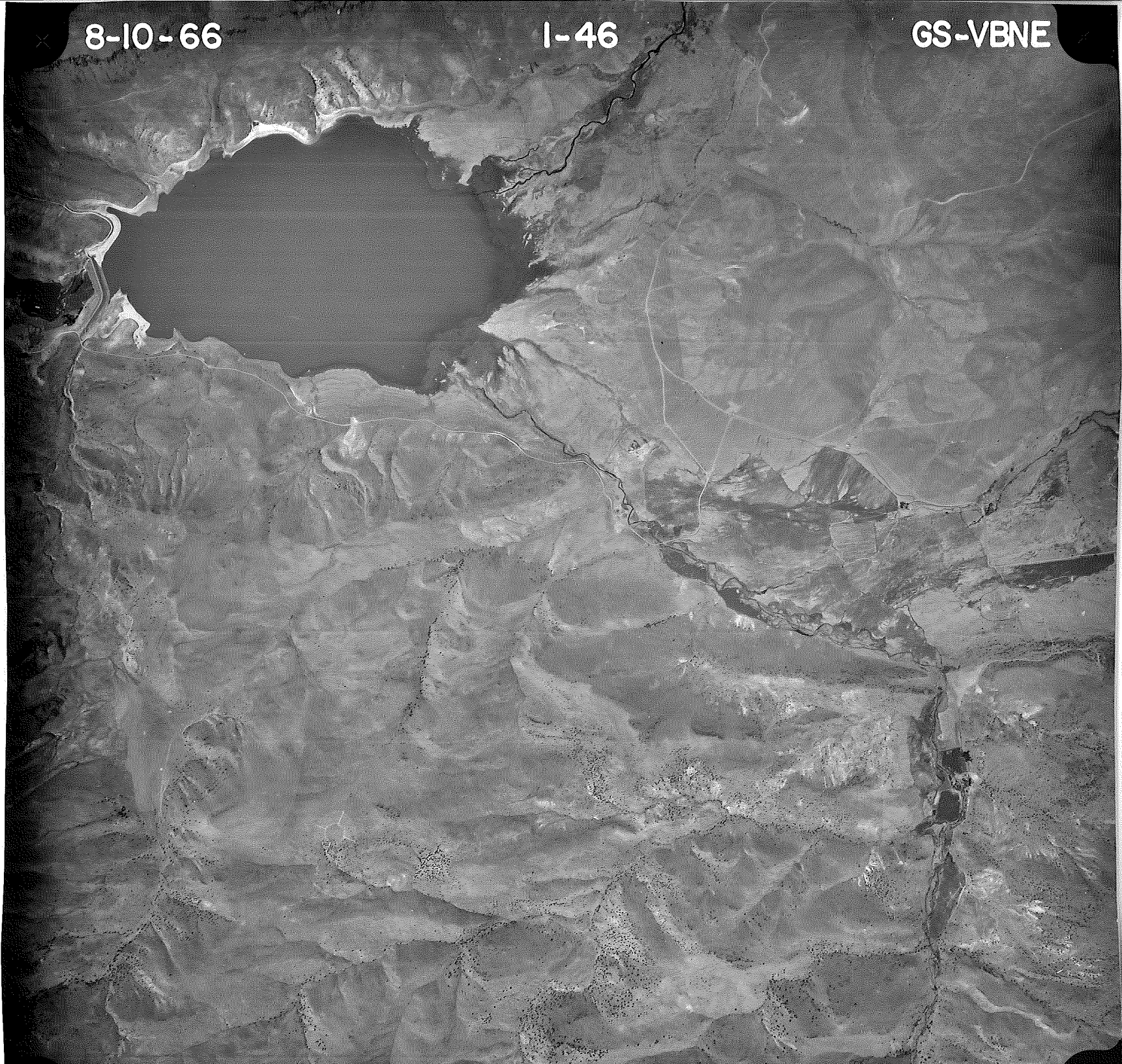
GS-VBNE



8-10-66

I-46

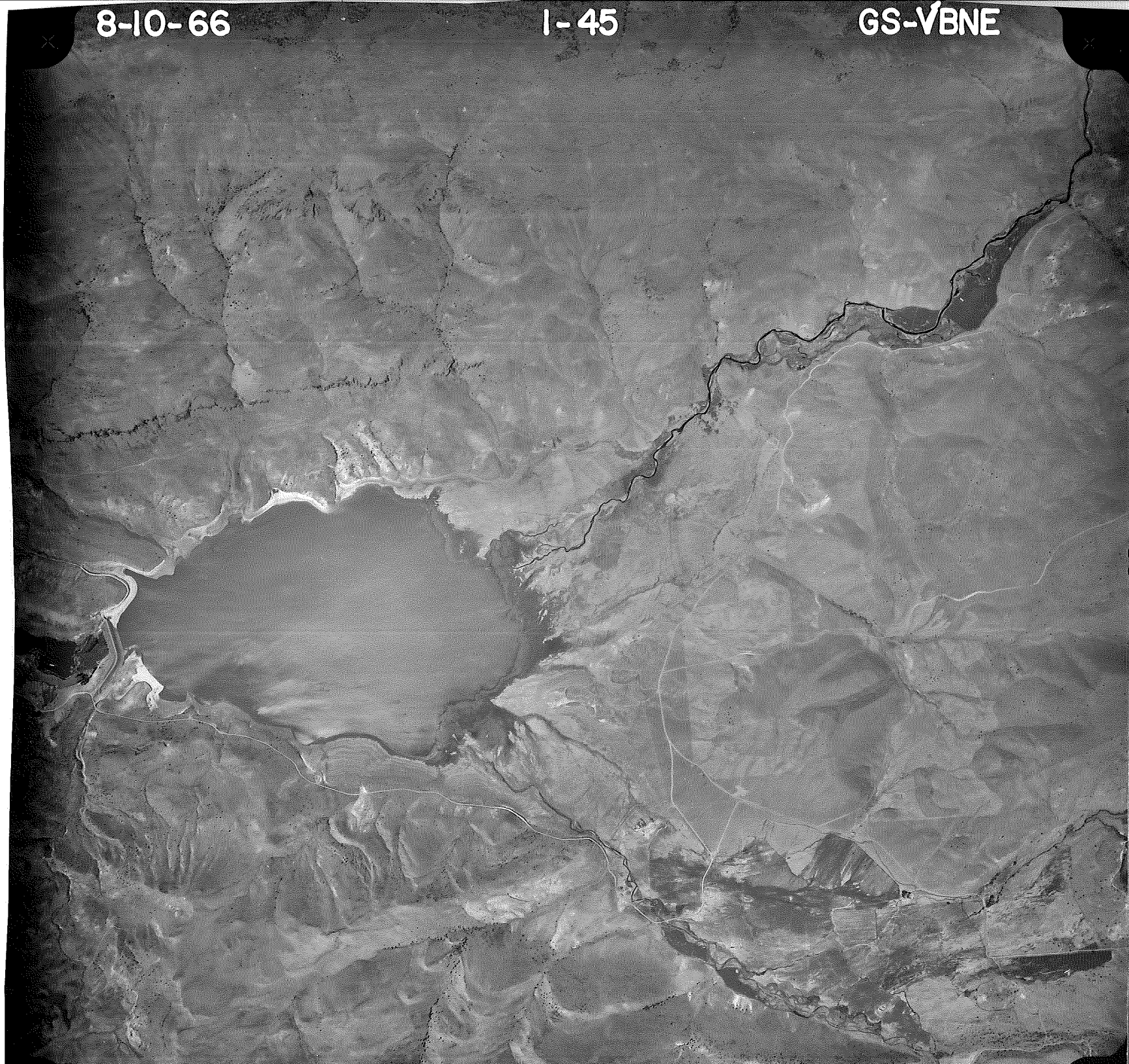
GS-VBNE



8-10-66

1-45

GS-VBNE



8-10-66

1-44

GS-VBNE



8-10-66

1-43

GS-VBNE



8-10-66

1-42

GS-VBNE



8-10-66

1-41

GS-VBNE



8-10-66 11:23 UAG253 1-40 H=16,000' GS-VBNE



8-10-66

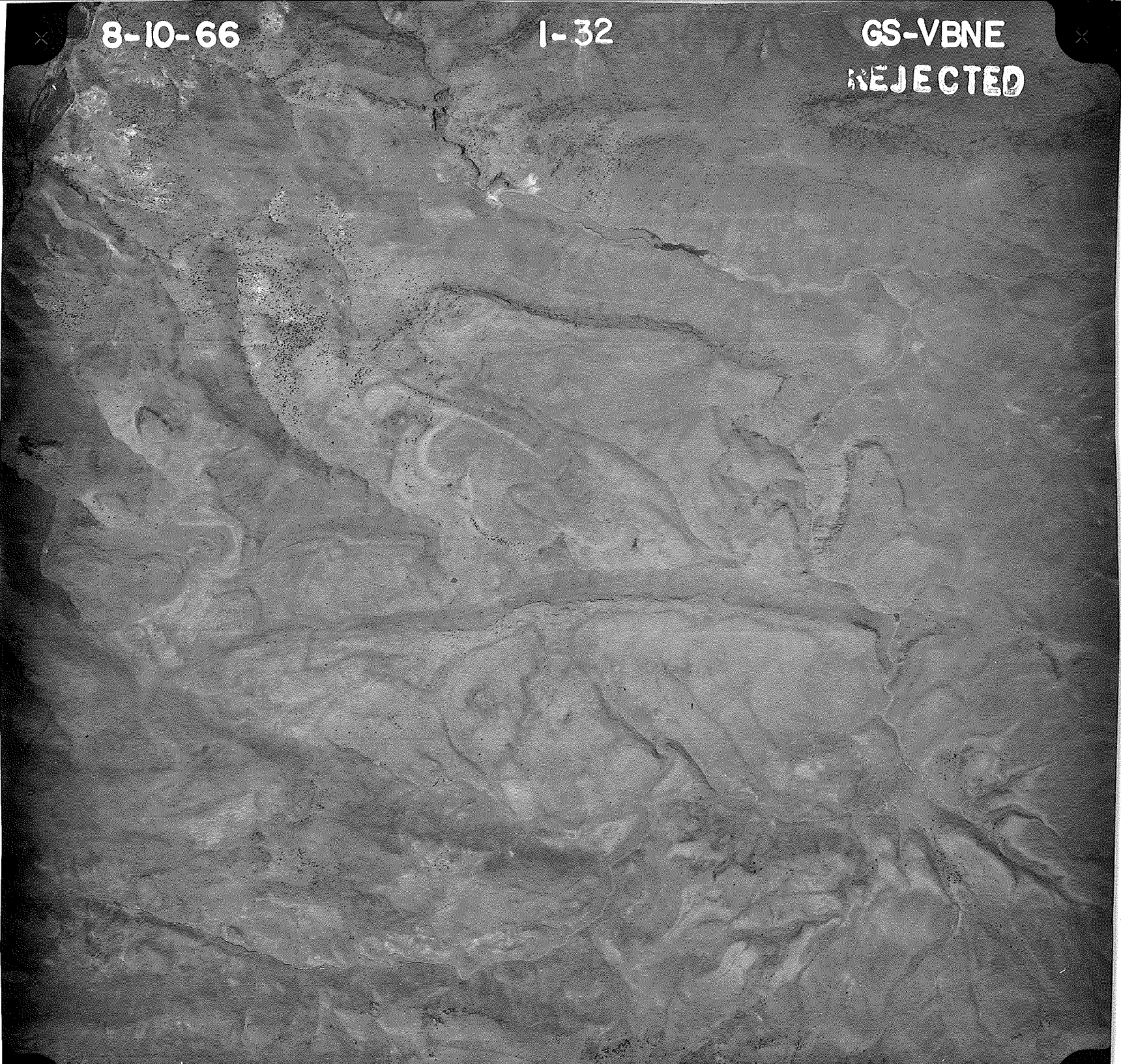
1-31

GS-VBNE
REJECTED

8-10-66

1-32

GS-VBNE
REJECTED



8-10-66

1-33

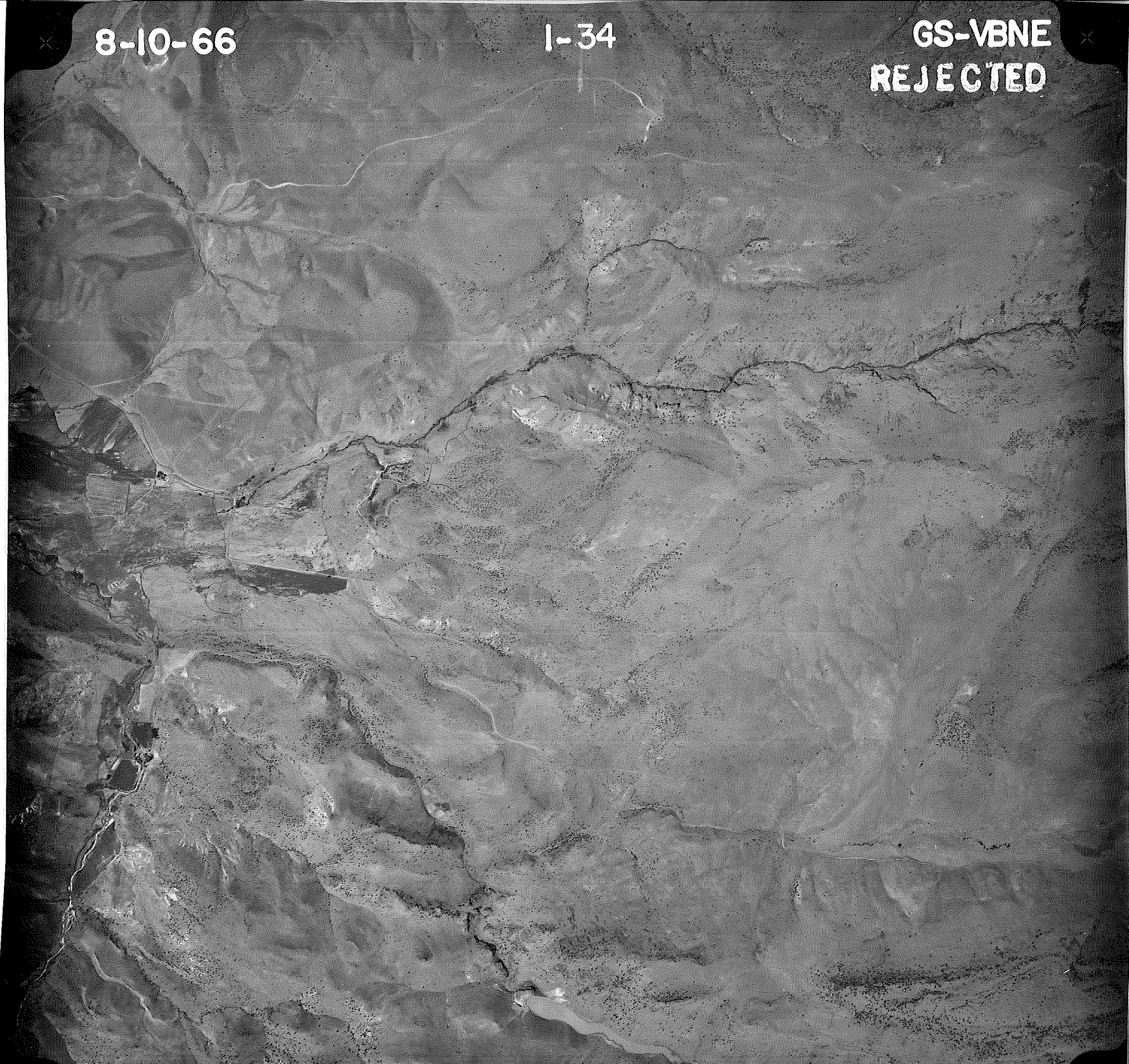
GS-VBNE
REJECTED



8-10-66

1-34

GS-VBNE
REJECTED



8-10-66

1-35

GS-VBNE
REJECTED



8-10-66

1-36

GS-VBNE
REJECTED



8-10-66

I-37

GS-VBNE
REJECTED



8-10-66

1-38

GS-VBNE
REJECTED



8-10-66

11:16

UAG253

1-39

H=16,000'

GS-VBNE

REJECTED

