

AMAX EXPLORATION, INC.

A SUBSIDIARY OF AMAX INC.

4704 HARLAN STREET • DENVER, COLORADO 80212 • (303) 433-6151

March 3, 1977

Mr. E. H. Haynes
Chevron Resources Company
P. O. Box 3722
San Francisco, California 94119

Dear Mr. Haynes:

Enclosed is the map of the 20 AMAX temperature gradient holes in the Bully Creek area of Malheur County, Oregon. We are interested in acquiring the data from all 14 of the Chevron holes. We would also like to include, as a part of the trade, the lithologic descriptions for each hole if you are agreeable.

Sincerely,

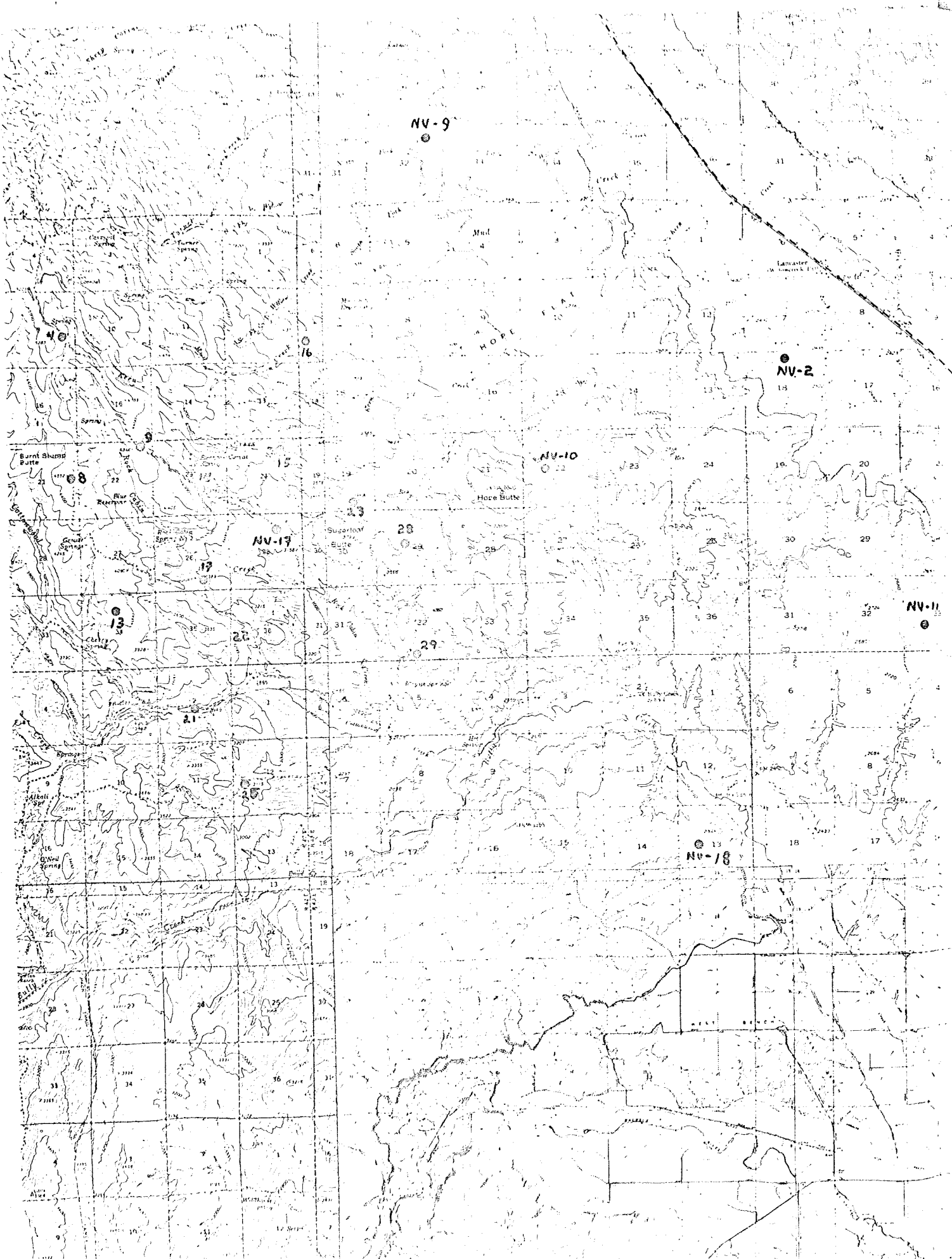


H. D. Pilkington

HDP:mmo

Enclosure

cc: H. J. Olson
W. M. Dolan



NV-9

NV-2

NV-10

NV-17

NV-13

NV-18

NV-11

Mud

HOPE

Barnet Shump Butte

Horse Butte

Sagebrush Butte

Alkali Springs

O'Neil Springs

Lansdale

Cherry Springs

Sagebrush

Genoa Springs

Spring

Alkali

Spring

Spring