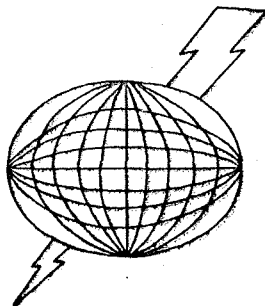


**DATA**  
**ELECTRICAL SURVEY**  
**LA GRANDE PROSPECT**  
**UNION COUNTY, OREGON**

Prepared for  
**AMAX EXPLORATION, INC.**  
**Geothermal Group**

**February, 1976**

by  
**Aldo Mazzella**



**TERRAPHYSICS**  
**815 SOUTH TENTH STREET**  
**RICHMOND, CALIFORNIA 94804**  
**(415) 234-8961**

## List of Figures and Plates

Figure		Page
3.	Magnetotelluric pseudo-section AA'	1
4.	Magnetotelluric profile AA'	2
5.	Magnetotelluric data station 1	3
6.	Magnetotelluric data station 2	4
7.	Magnetotelluric data station 3	5
8.	Magnetotelluric data station 4	6
9.	Magnetotelluric data station 5	7
10.	Magnetotelluric data station 6	8
11.	Magnetotelluric data station 7	9
12.	Magnetotelluric data station 8	10
13.	Resistivity Interpretation	11
Plate		
1.	Location Map	(In pocket)



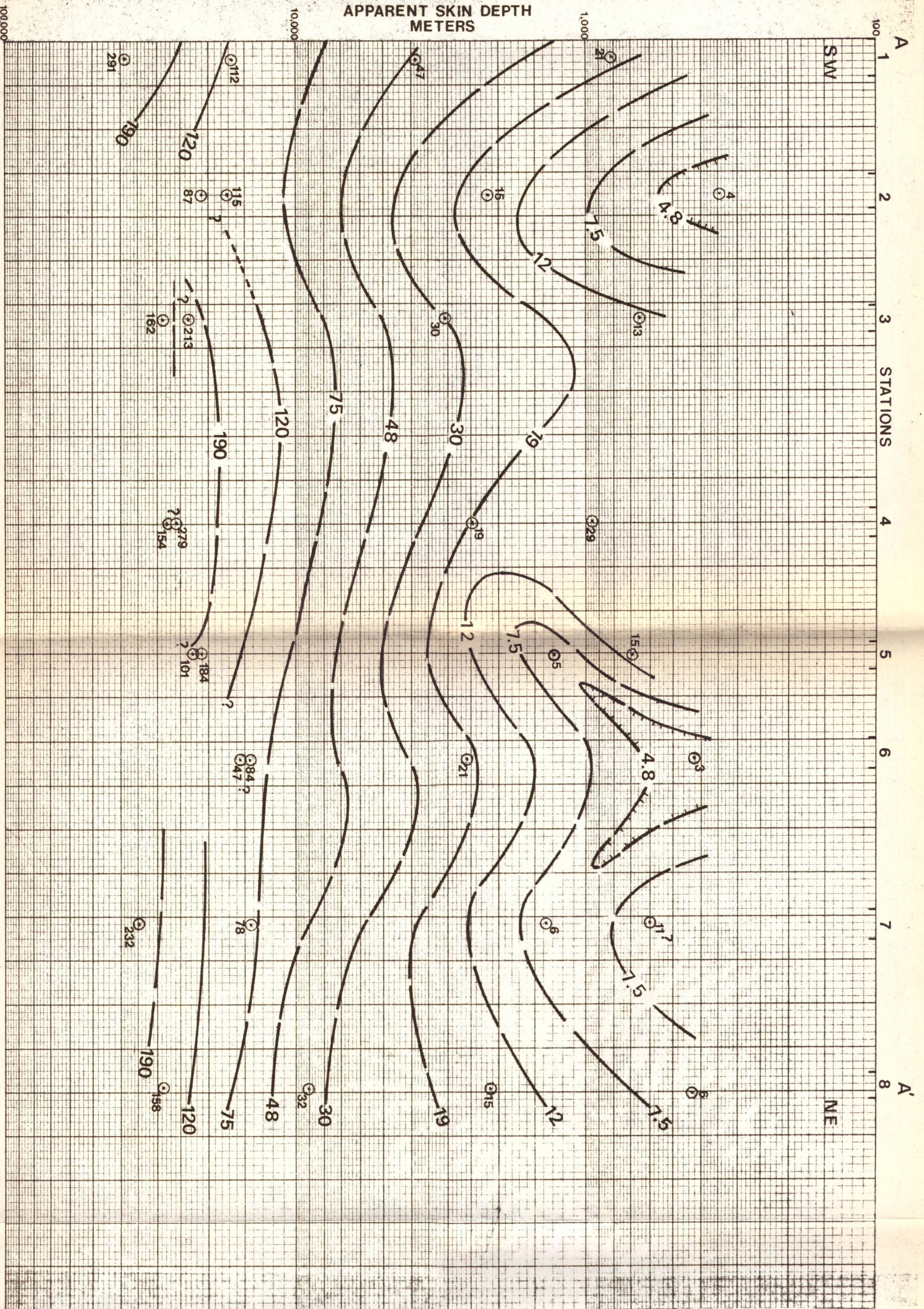


FIG. 3 LA GRANDE, OREGON  
 MAGNETOTELLURIC  
 PSEUDO SECTION  
 APPARENT RESISTIVITY IN  
 OHM METERS  
 ○ DATA  
 SCALE 1:62500 2 KILOMETERS



APPARENT RESISTIVITY  
 OHM METERS

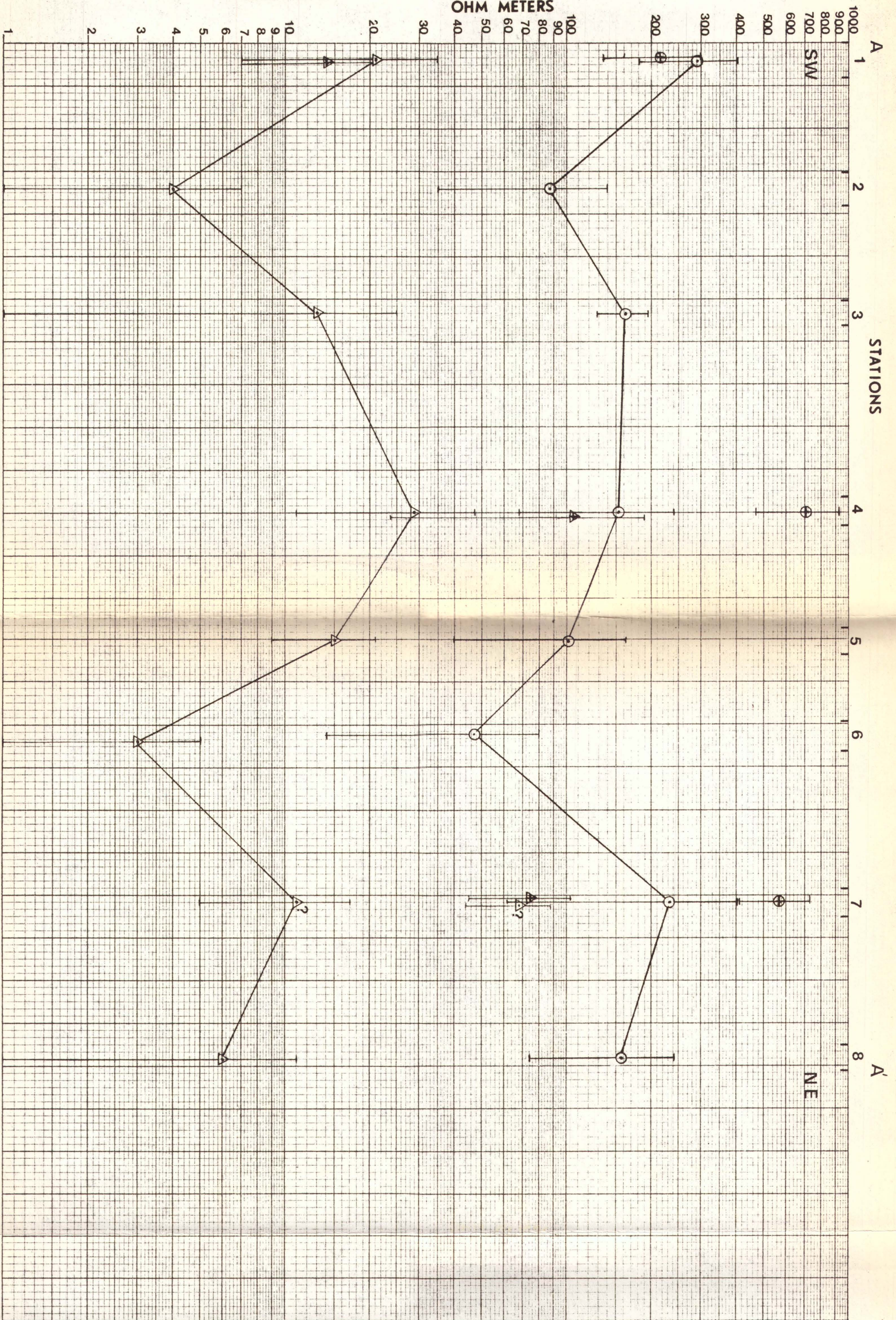


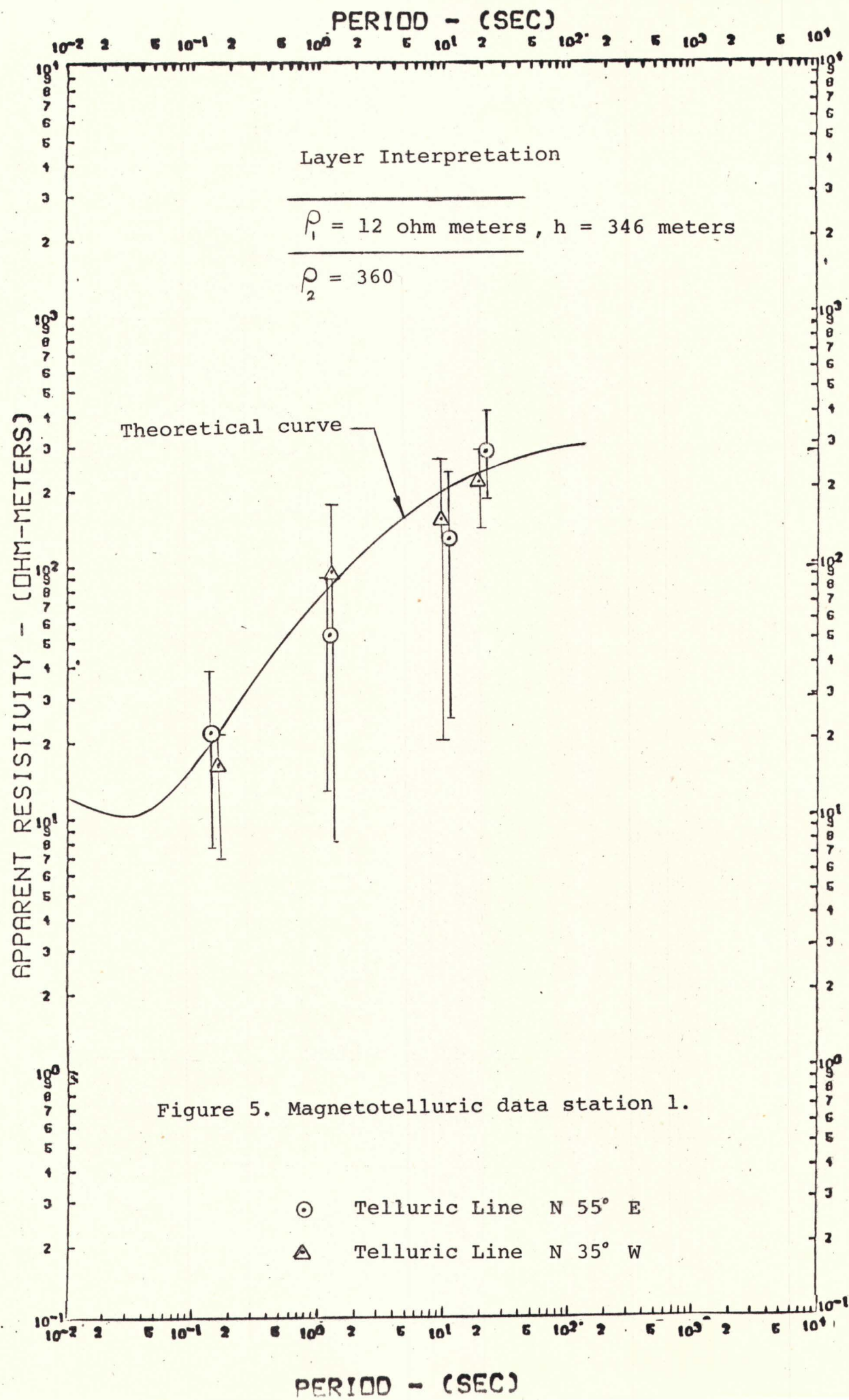
FIG. 4 LA GRANDE, OREGON  
 MAGNETOTELLURIC PROFILE

- ⊙ 0.05 HZ TELLURIC LINE N 55° E
- ⊕ 0.05 HZ TELLURIC LINE N 35° W
- △ 8.0 HZ TELLURIC LINE N 55° E
- ▲ 8.0 HZ TELLURIC LINE N 35° W

SCALE 1:62500

0 5 1 2 KILOMETERS





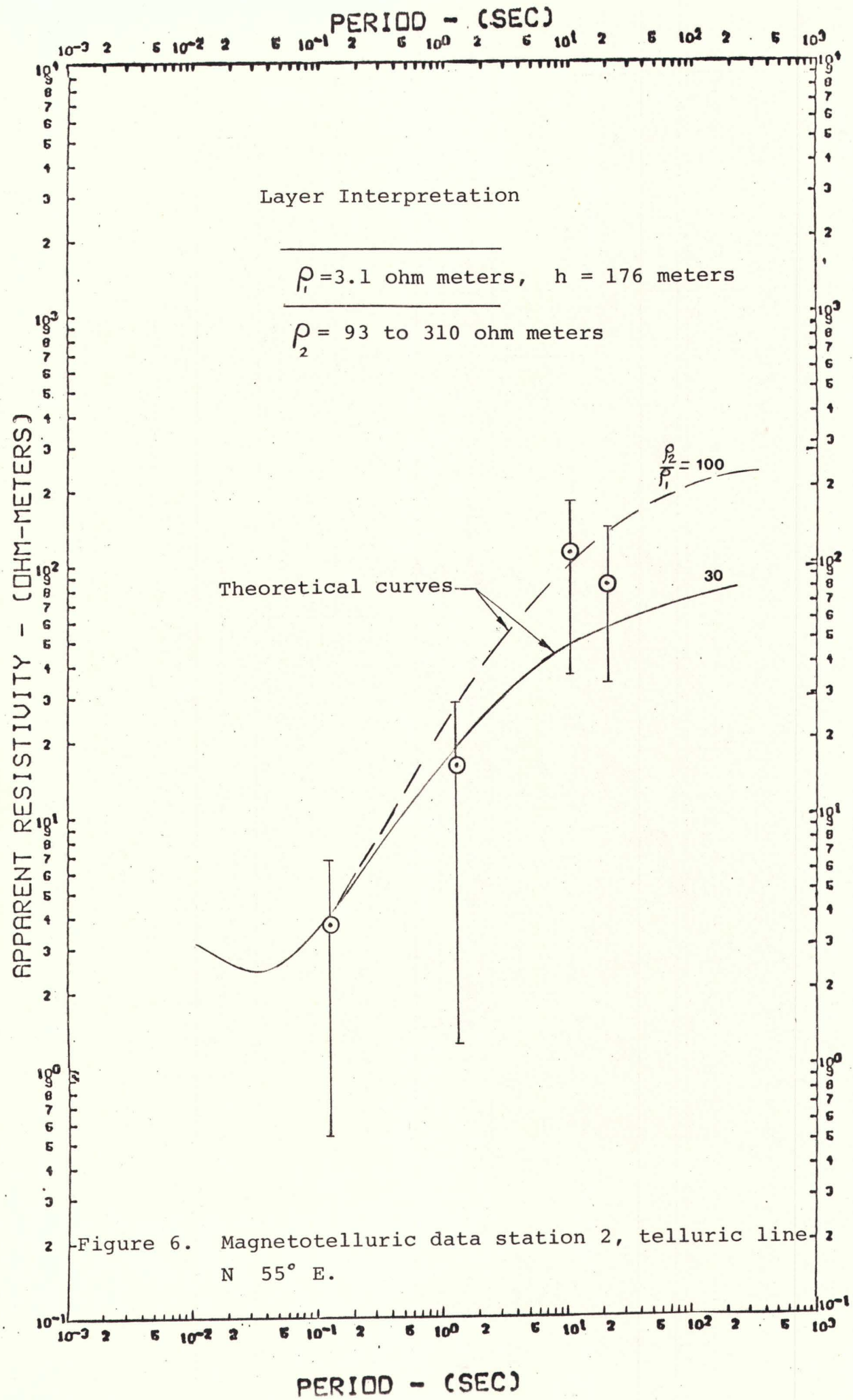
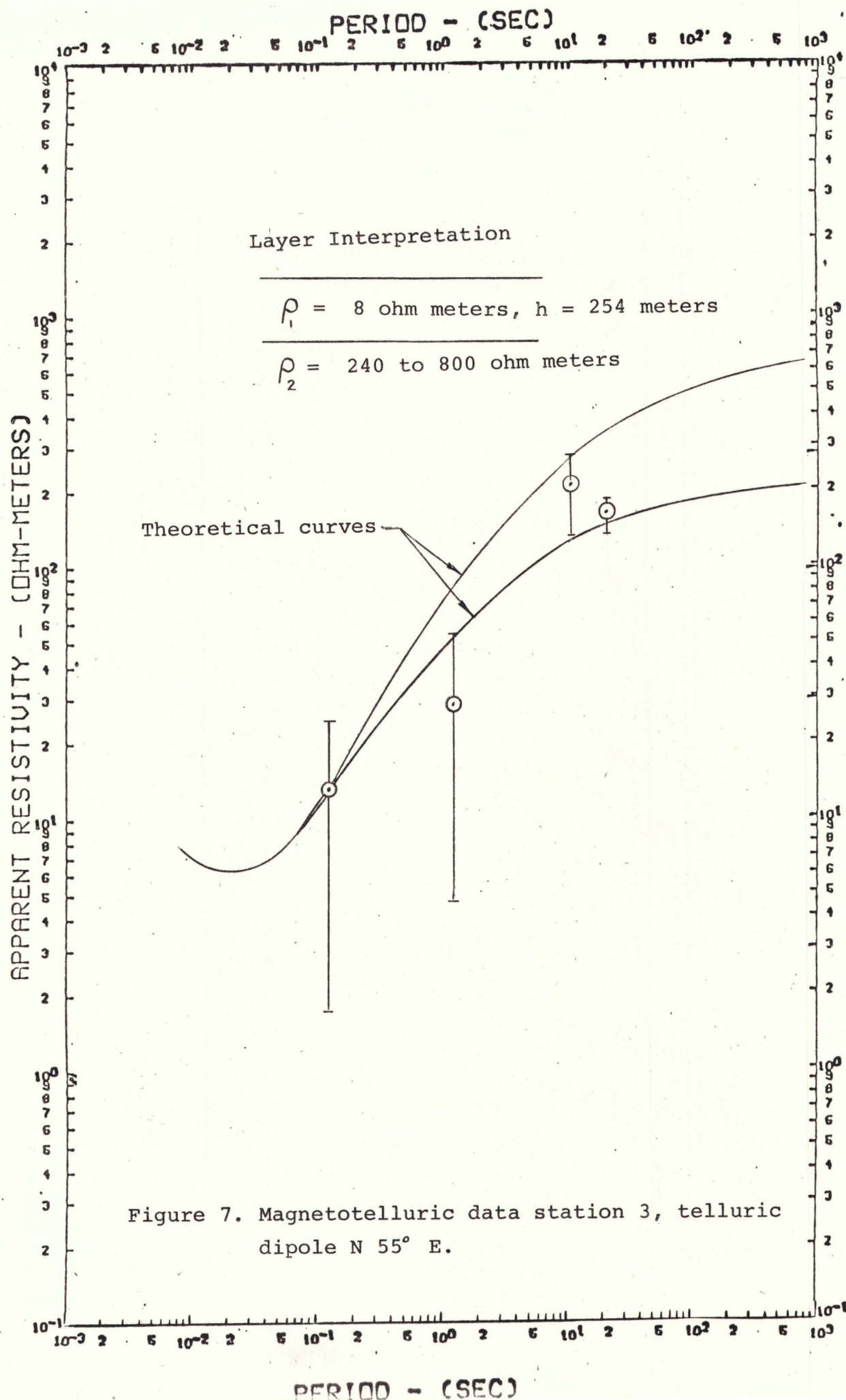
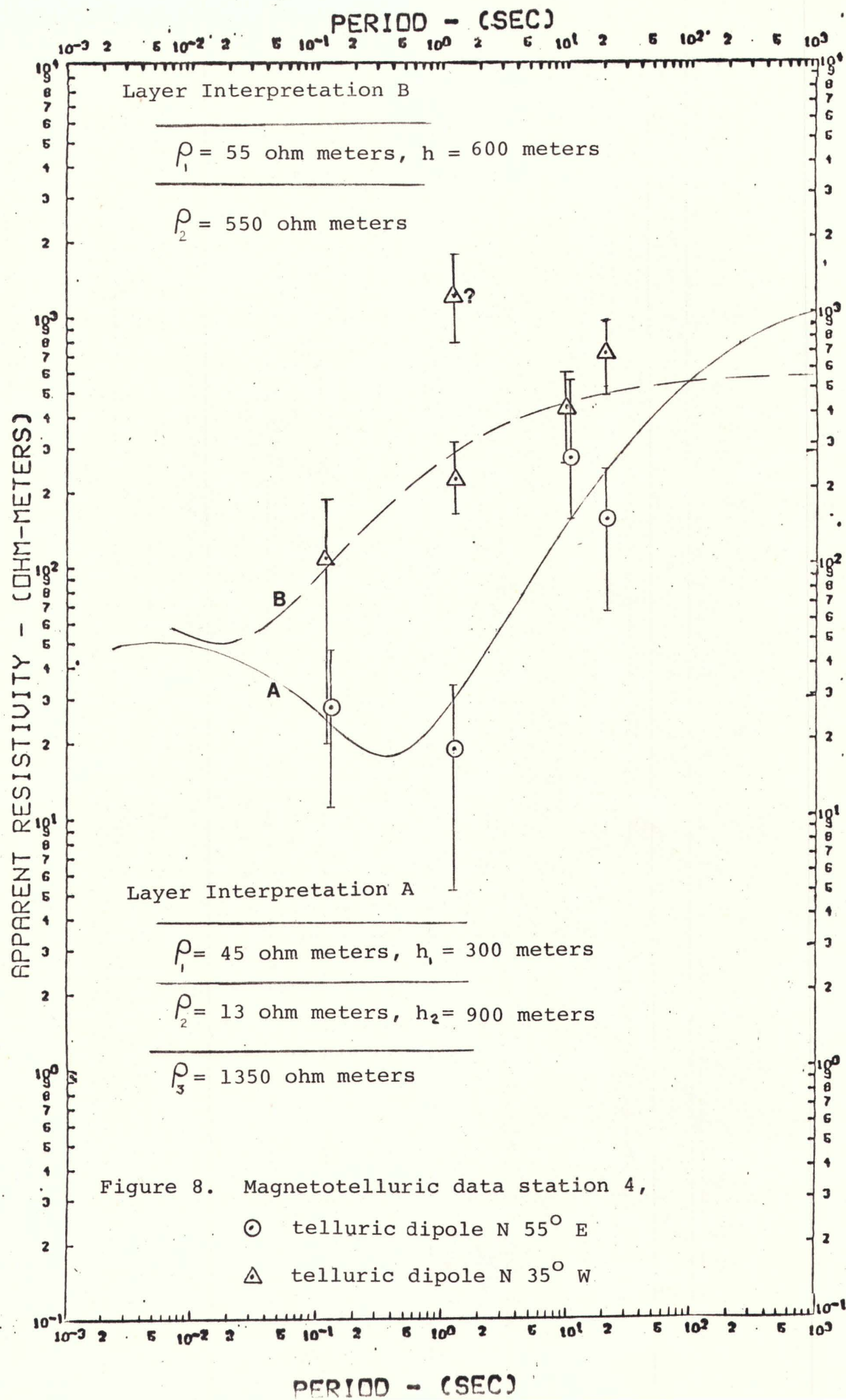
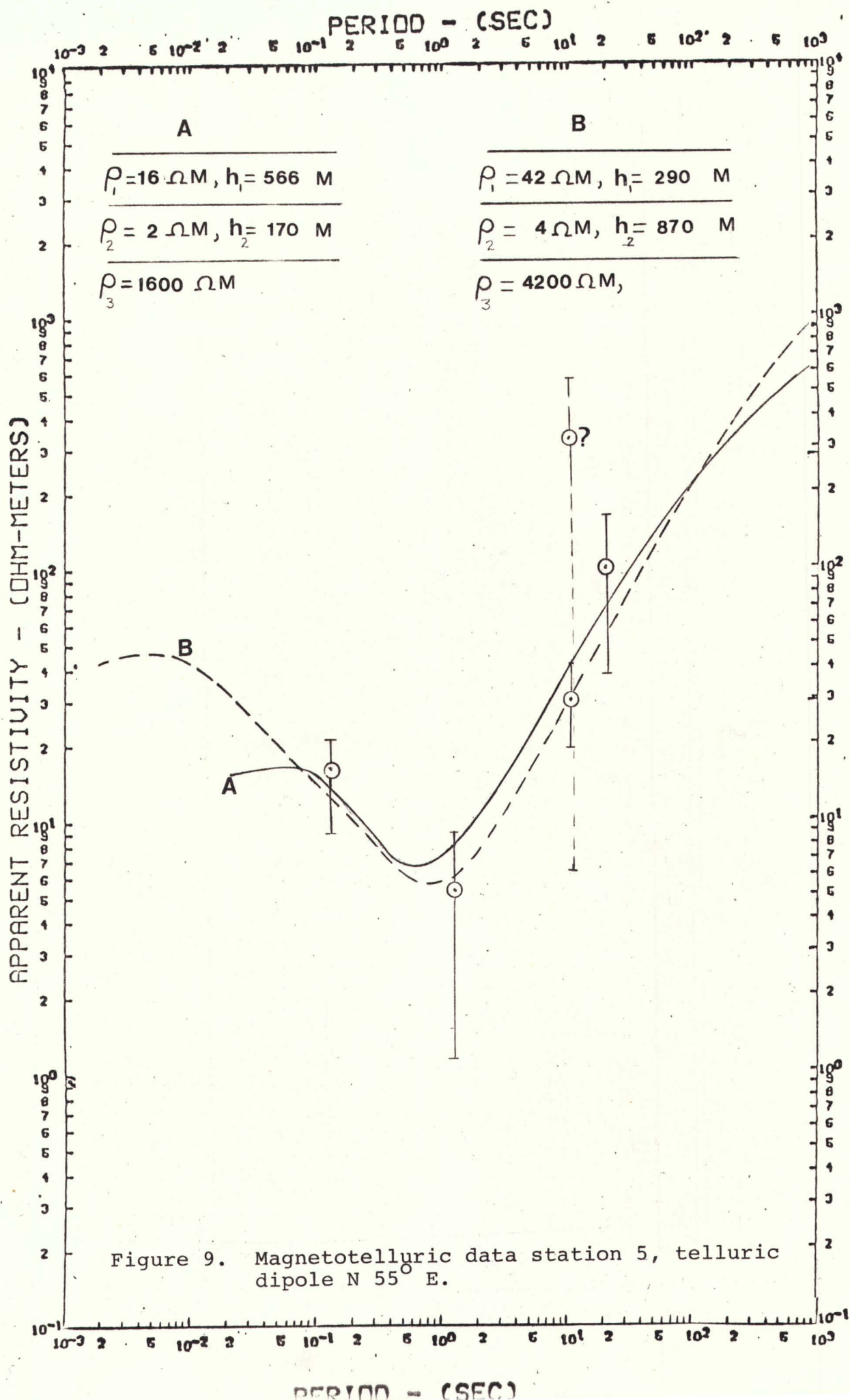


Figure 6. Magnetotelluric data station 2, telluric line N 55° E.









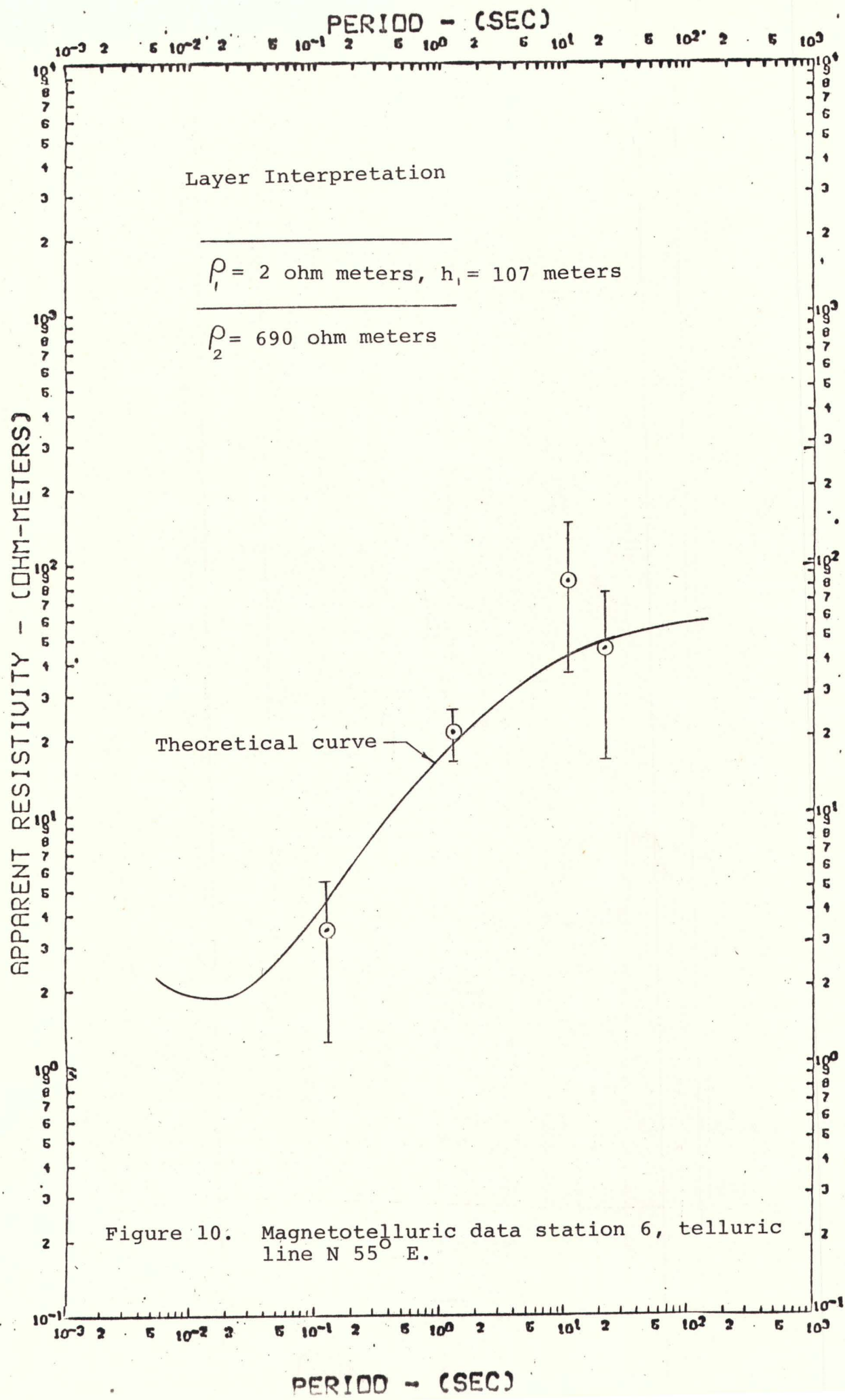
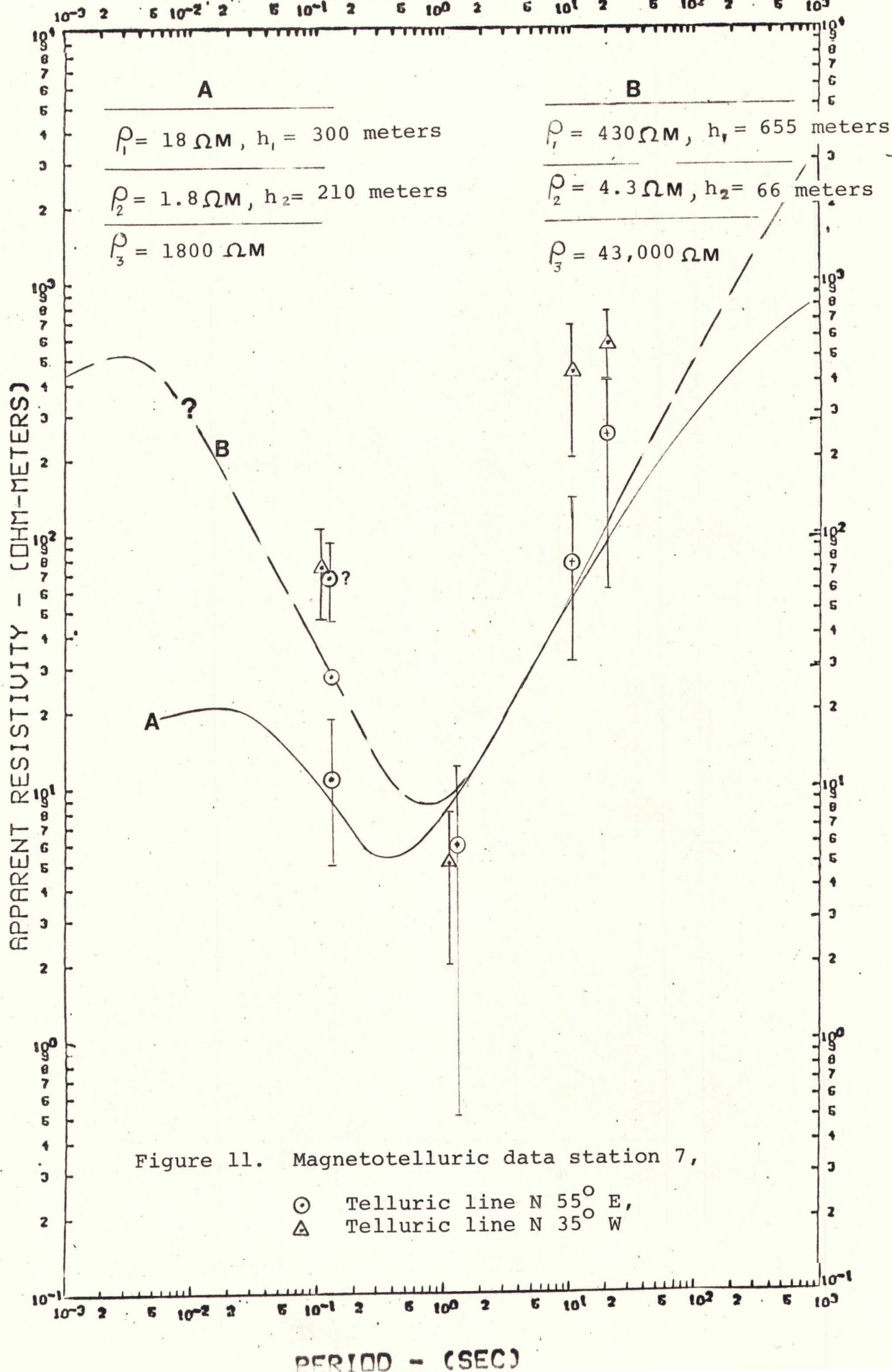
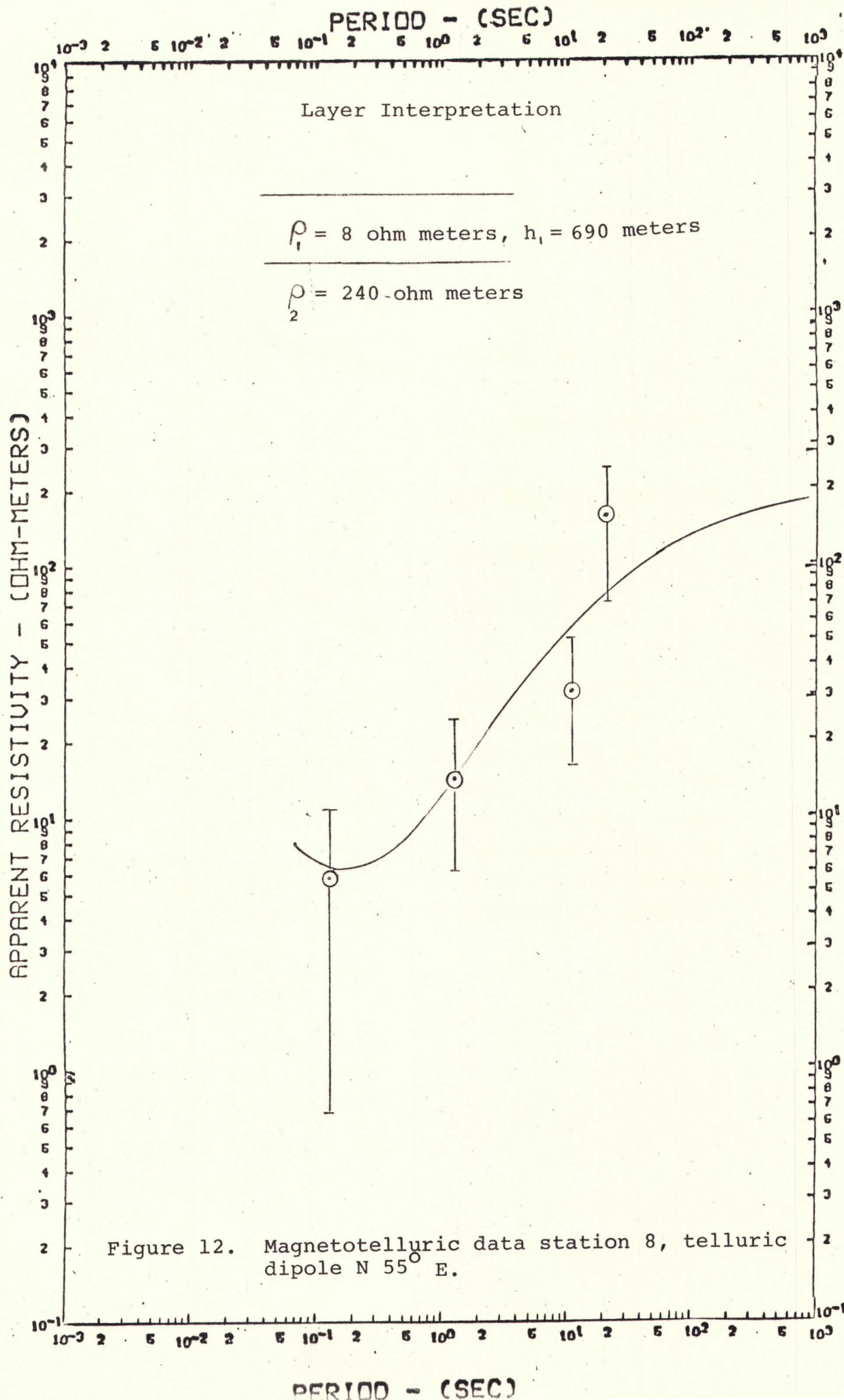


Figure 10. Magnetotelluric data station 6, telluric line N 55° E.









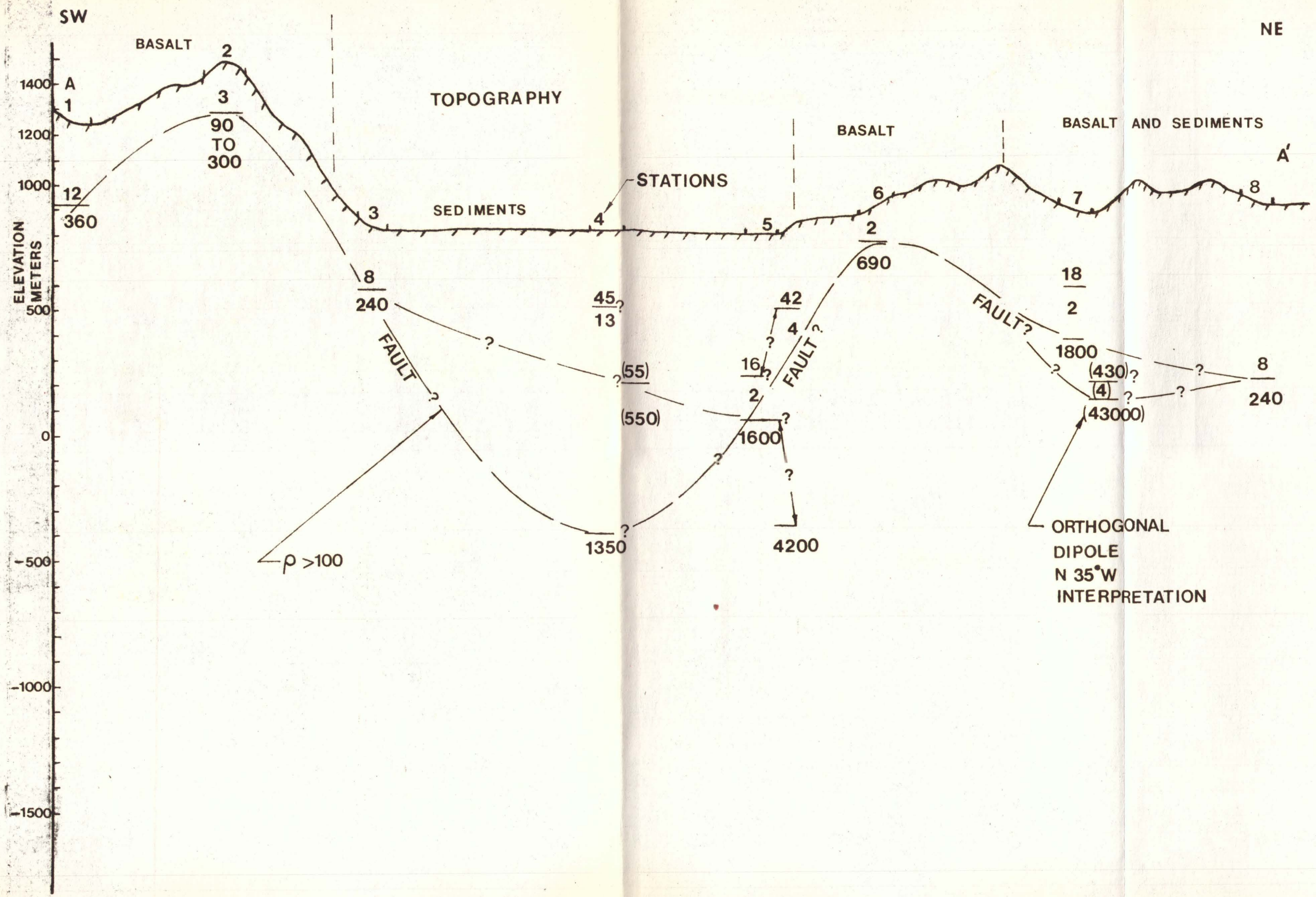


FIGURE 13.

LA GRANDE, OREGON

### INTERPRETATION

RESISTIVITY  
IN  
OHM METERS

THIS INTERPRETATION IS BASED UPON ONE DIMENSIONAL MULTILAYER ANALYSIS. THIS IS NOT A UNIQUE SOLUTION. TWO DIMENSIONAL EFFECTS ARE EVIDENT AND COULD SIGNIFICANTLY ALTER THE MODEL.



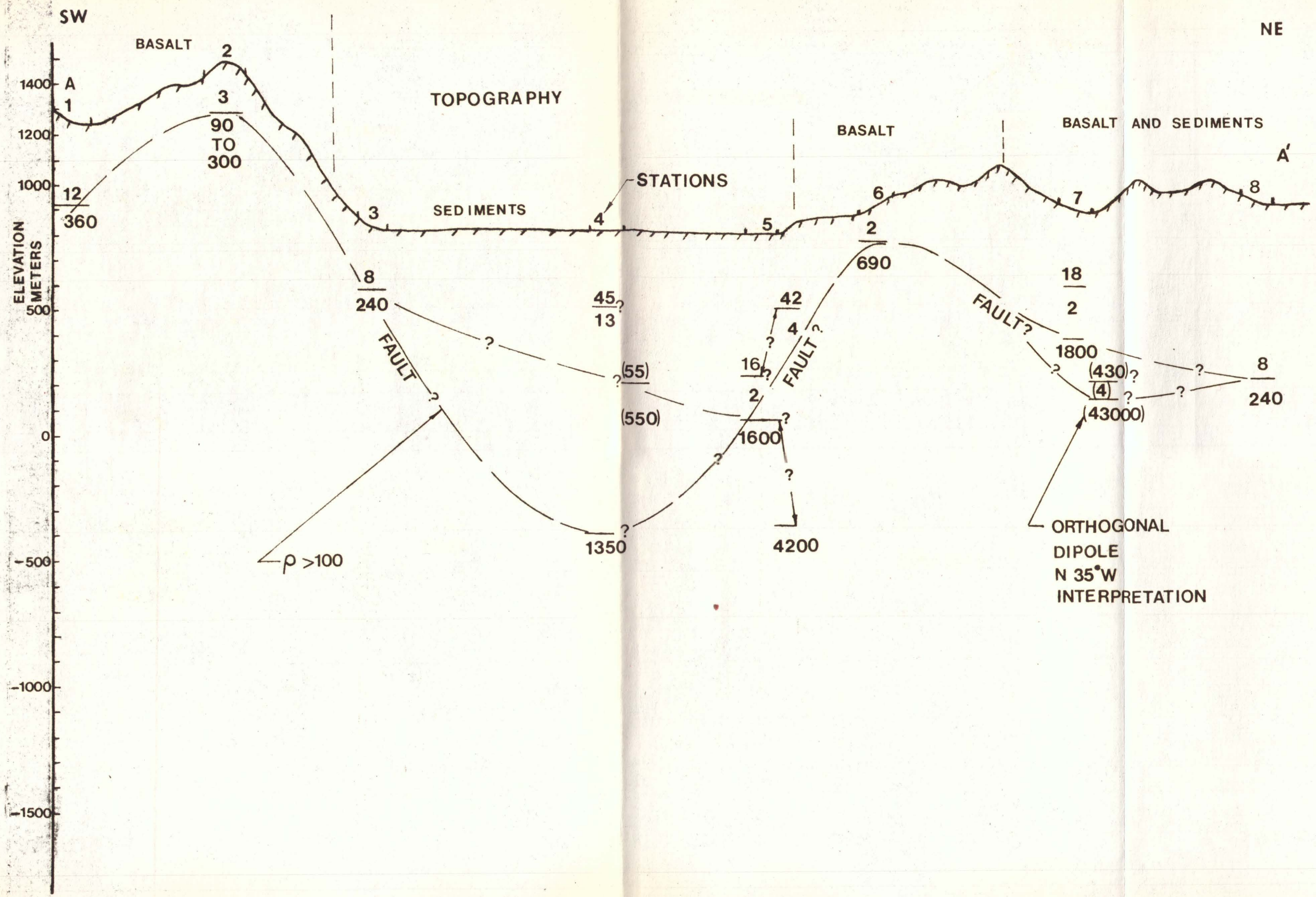


FIGURE 13.

LA GRANDE, OREGON

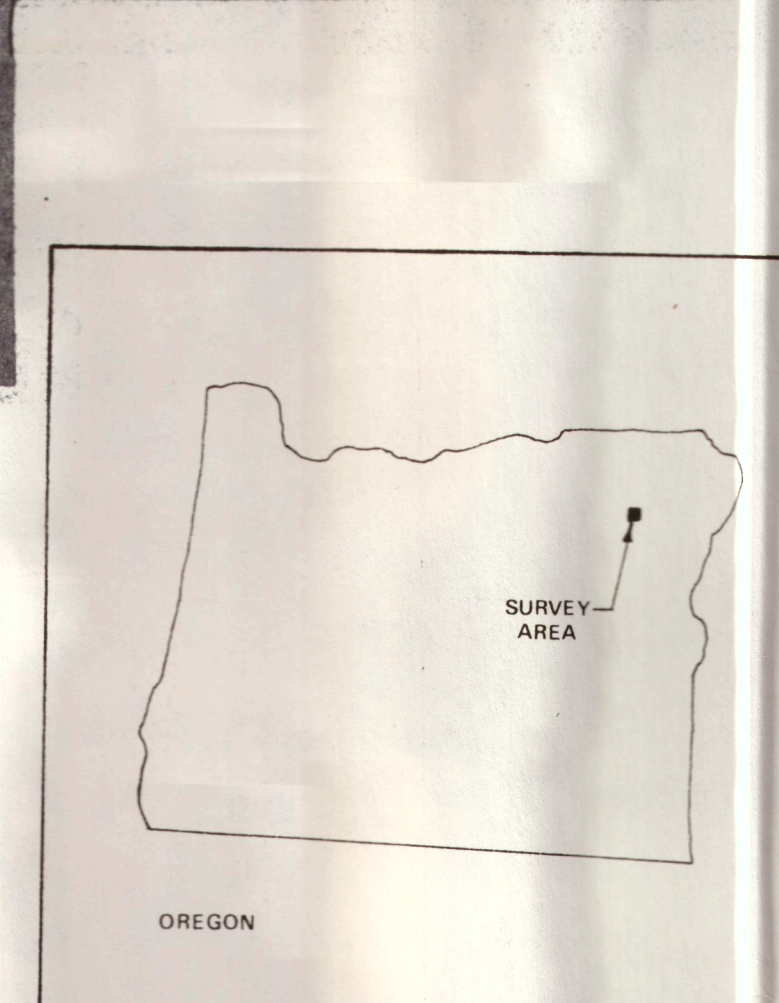
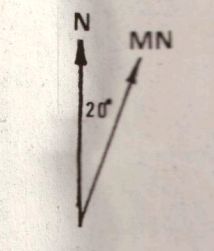
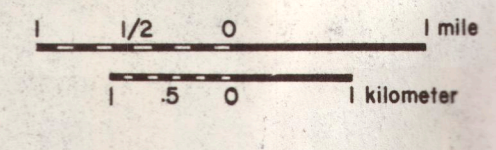
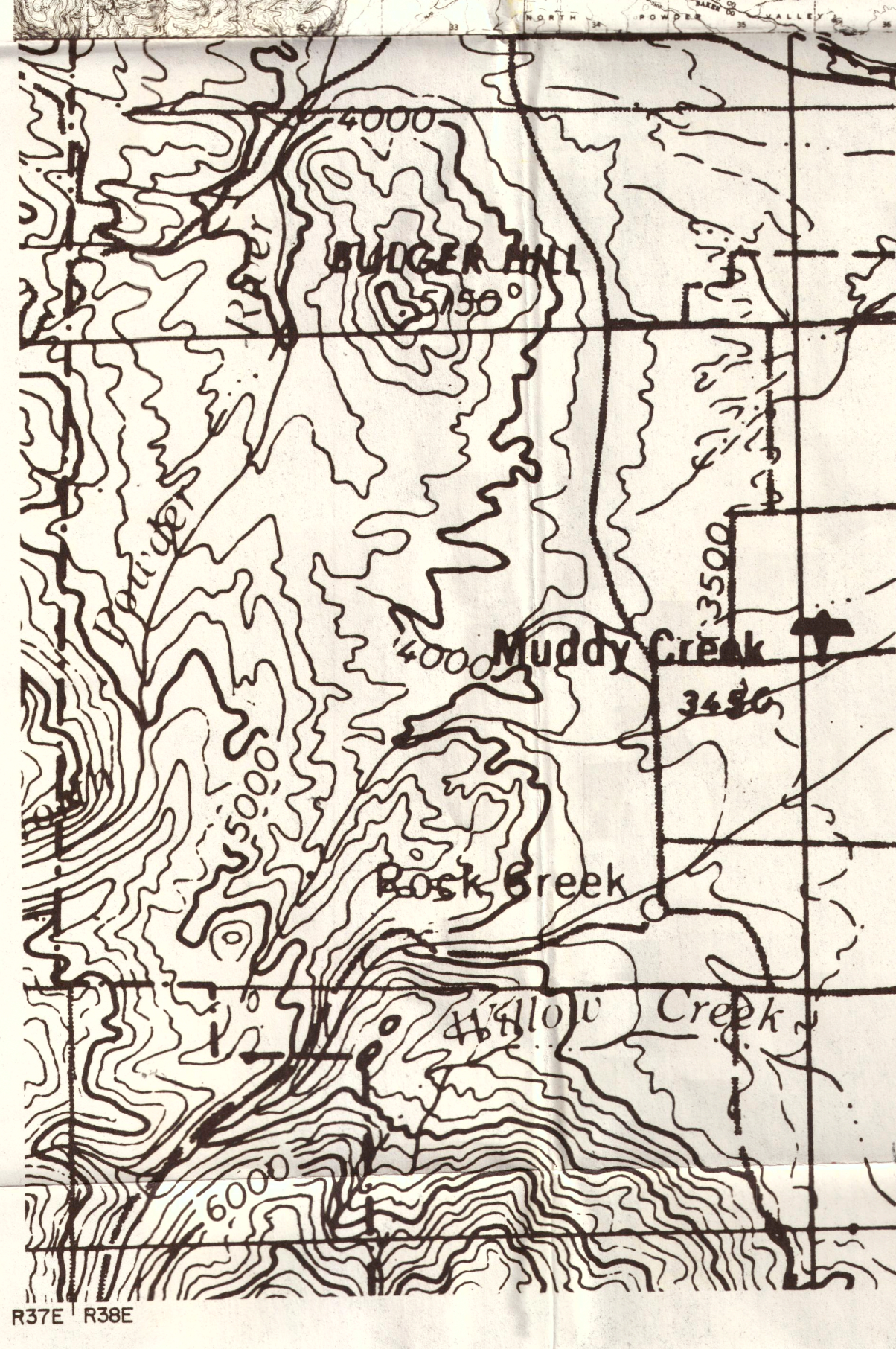
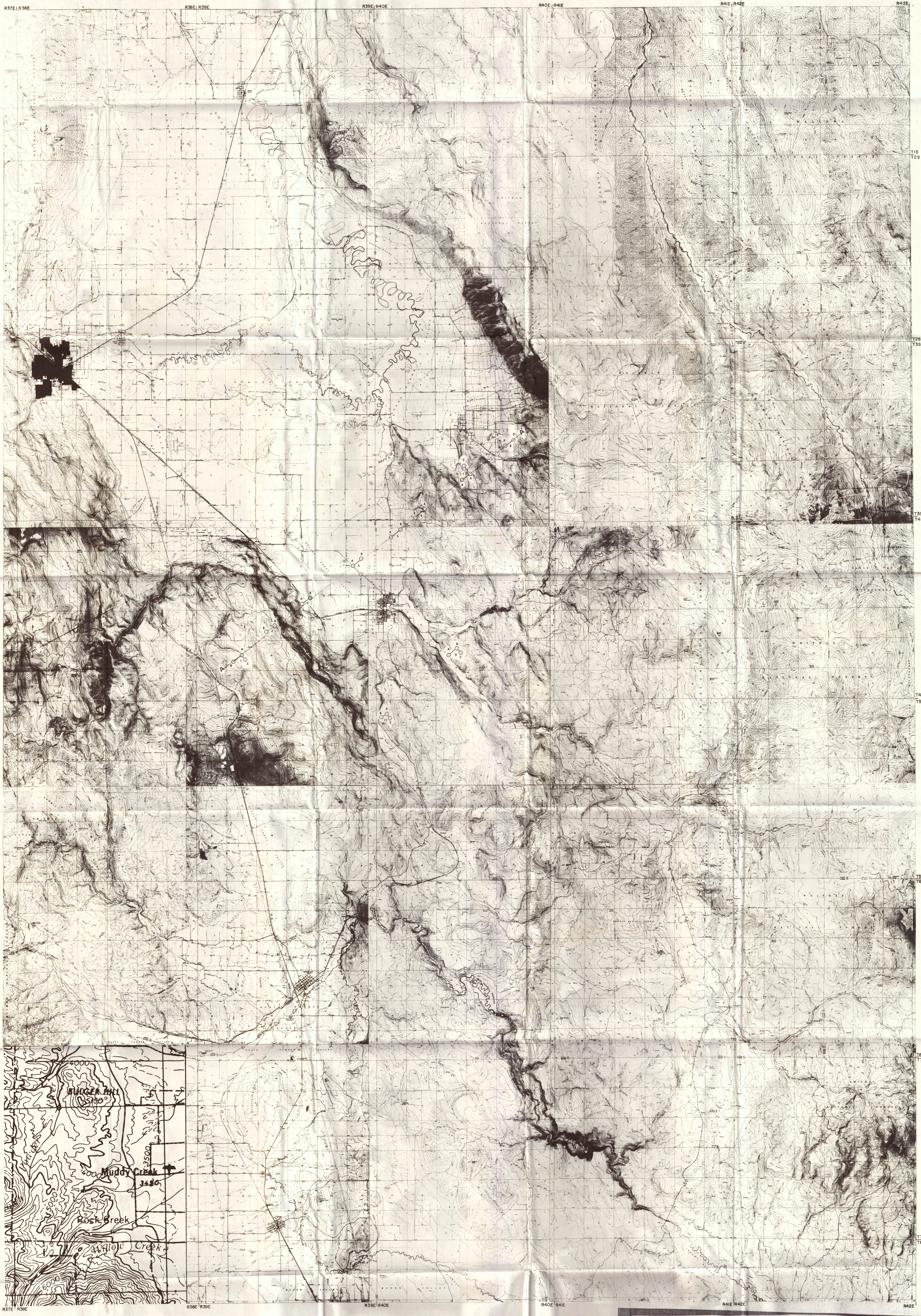
### INTERPRETATION

RESISTIVITY  
IN  
OHM METERS

THIS INTERPRETATION IS BASED UPON ONE DIMENSIONAL MULTILAYER ANALYSIS. THIS IS NOT A UNIQUE SOLUTION. TWO DIMENSIONAL EFFECTS ARE EVIDENT AND COULD SIGNIFICANTLY ALTER THE MODEL.

ORTHOGONAL  
DIPOLE  
N 35°W  
INTERPRETATION





**MAGNETOTELLURIC SURVEY**  
**LOCATION MAP**  
for  
**AMAX EXPLORATION, INC.**  
**(GEOHERMAL GROUP)**  
IN  
**LA GRANDE PROSPECT**  
**UNION COUNTY, OREGON**  
SCALE 1:62500  
PREPARED BY [ ] APPROVED BY [ ] DATE JANUARY 1976  
TERRAPHYSICS 815 South Tenth Street, Richmond, Ca. 94804