

INTER-OFFICE MEMORANDUM

SUBJECT: Self Potential Survey Plan for BEST

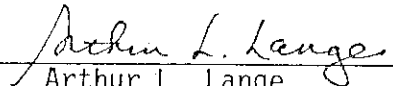
DATE August 31, 1977

TO: W. M. Dolan, H. J. Olson, H. D. Pilkington, Milford Office, A. Mazzella

FROM: A. L. Lange

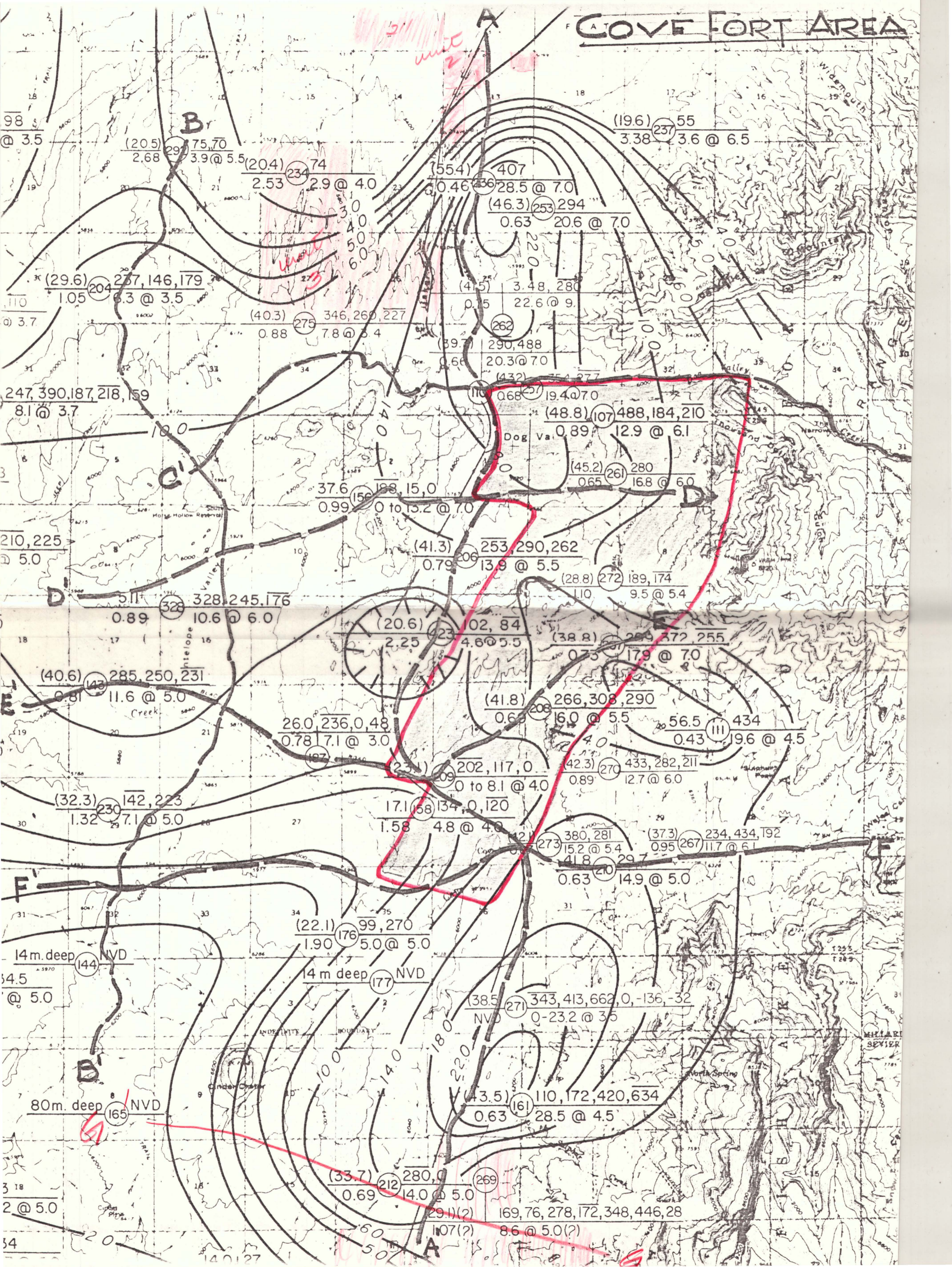
The self potential survey of four different targets in the Best project area began 29 August 1977, by Terraphysics personnel Bob Pfeiffer and Ron Wilson. The four accompanying maps depict the proposed lines to be run. Cross-lines and tie lines are chosen to intercept the thermal anomalies and features of interest, which are sketched roughly in pink on the map. Wherever possible I have routed the lines across passable roads and along thermal gradient holes. Work began on the Frisco area, and Twin Peaks, Cove Fort and Hatton will follow in that order, unless circumstances warrant otherwise.

Additional lines may be scheduled if the incoming data warrant. A line through Sulphurdale is particularly desired if it can be arranged.

  
\_\_\_\_\_  
Arthur L. Lange

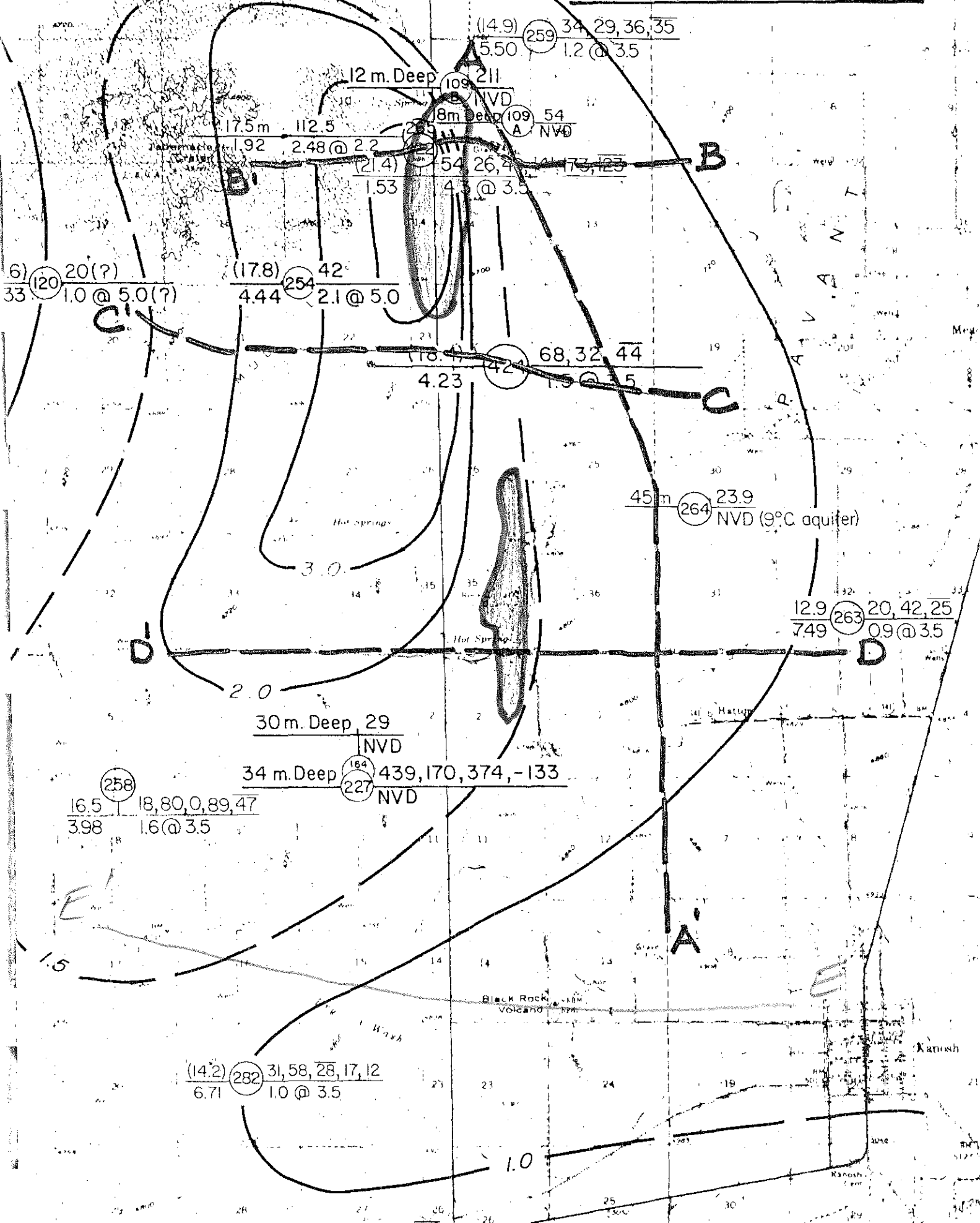
ALL:d

# COVE FORT AREA

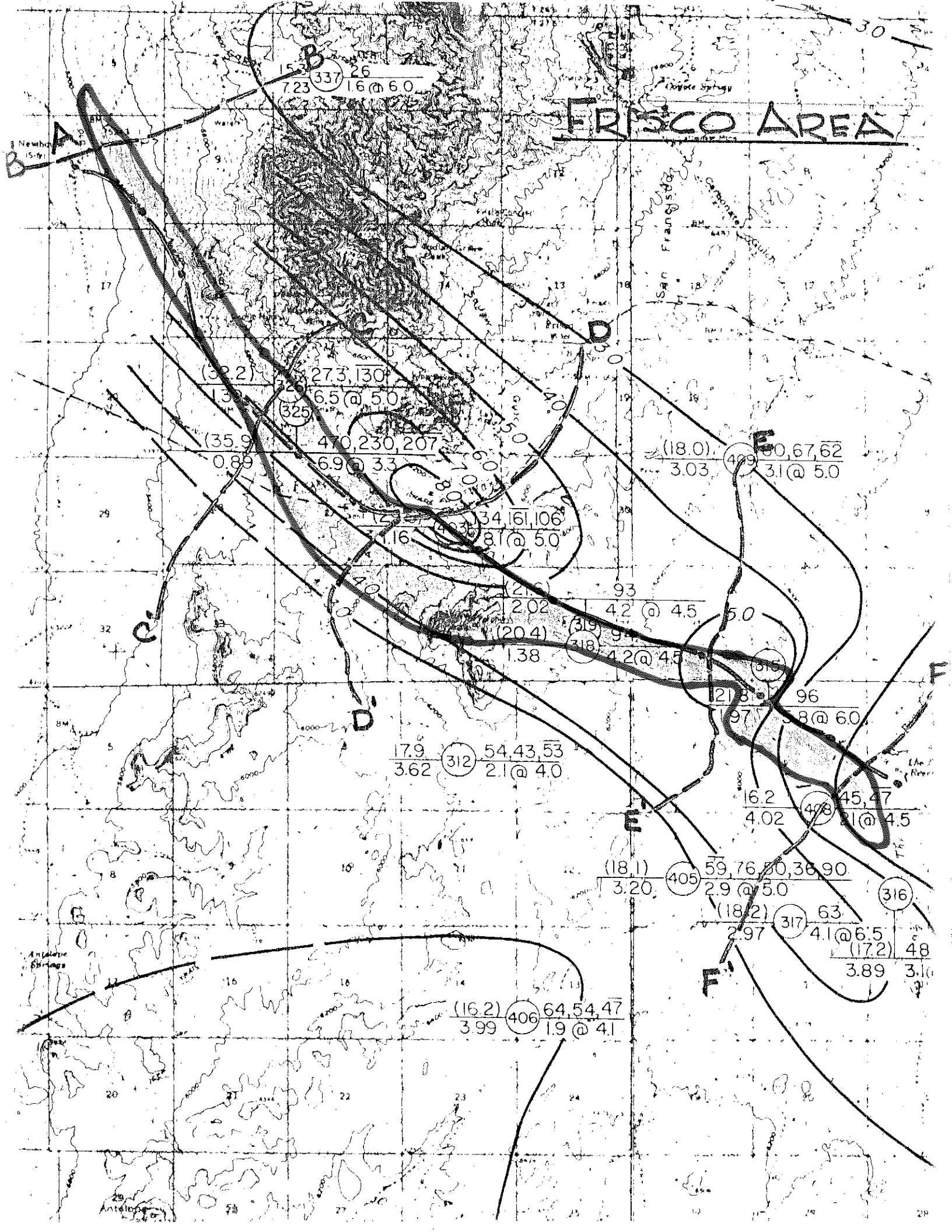


6.59 (25) 1.4 @ 5.0

# HATTON AREA



# FRISCO AREA



7.23 (337) 26  
1.6 @ 6.0

(32.2) 27.3, 130  
1.3 6.5 @ 5.0  
(325)

(35.9) 470, 230, 207  
0.89 6.9 @ 3.3

34, 16, 106  
1.16 4.3 8.1 @ 5.0

(2.6) 93  
2.02 4.2 @ 4.5  
(20.4) (319) 94

1.38 (318) 4.2 @ 4.5

17.9 (312) 54, 43, 53  
3.62 2.1 @ 4.0

(18.0) (409) 50, 67, 62  
3.03 3.1 @ 5.0

(218) 96  
97 3.8 @ 6.0

16.2 (408) 45, 47  
4.02 3.1 @ 4.5

(18.1) (405) 59, 76, 50, 38, 90  
3.20 2.9 @ 5.0

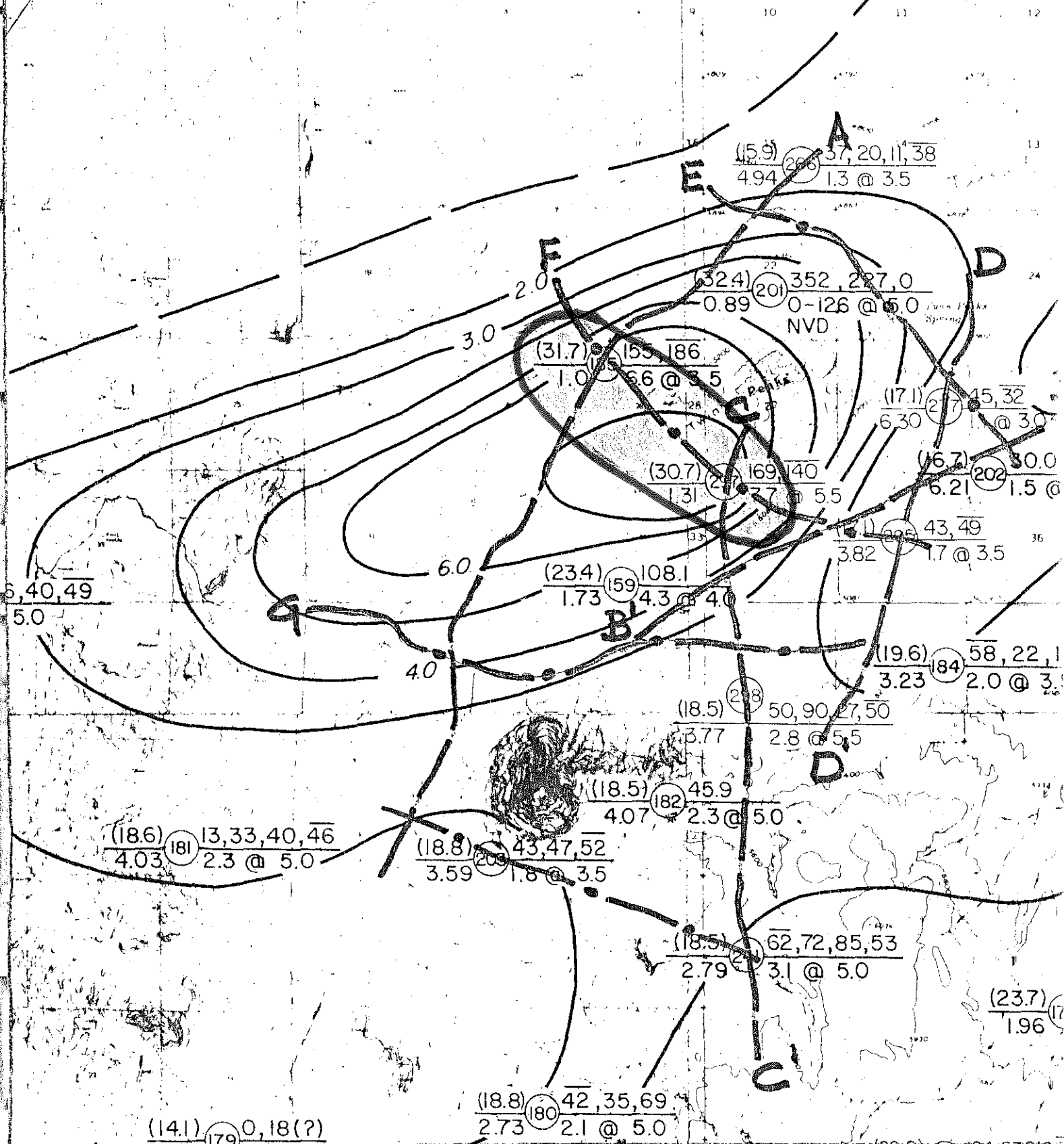
(18.2) (317) 63  
2.97 4.1 @ 6.5  
(17.2) 48

(16.2) (406) 64, 54, 47  
3.99 1.9 @ 4.1

3.89 3.1 @ 4.5

# TWIN PEAKS AREA

Clear Spot  
Flat





**BLACK MTNS. AREA**  
**SELF POTENTIAL PLAN**

1:62,500

HVO