



Temperature Log

FILE NO. 2-1007  
COMPANY THERMOGENICS  
WELL K-1A  
FIELD KLAU MINES  
COUNTY LAKE STATE CALIFORNIA  
LOCATION S 2350' W. & 1770' N., OF S.E. CORNER OF 1 E1

PERMITS: DL 2640, F.R. 2640, K.B. 2640  
LOG MEASURED FROM: K.B. 2640  
DRILLING MEASURED FROM: K.B. 2640  
DATE: 3-1-78  
TEMPERATURE: 3340  
LOGGERS: T.D. 4180, F.R. 3340, K.B. 2640

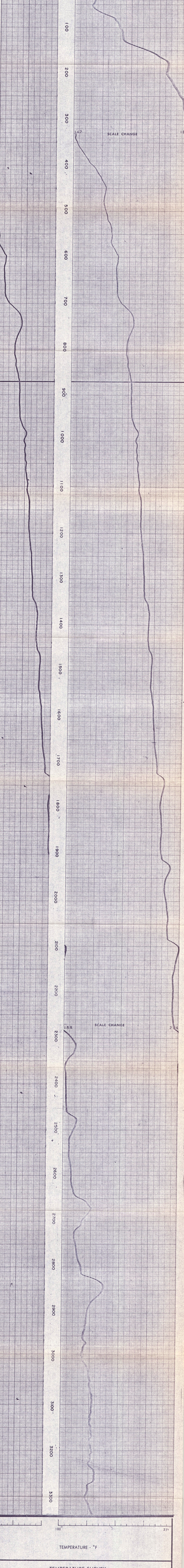
DATE: 3-1-78  
TIME: 12:17  
LOGGERS: T.D. 4180, F.R. 3340, K.B. 2640

LOG NO. 2112  
RUN NO. ONE  
SERIAL NO. 36305  
MARK NO. HL6106

DIFFERENTIAL TEMPERATURE LOG DATA and INSTRUMENT DATA tables with fields for Date, Time, Log No., etc.

TEMPERATURE SURVEY

TEMPERATURE - °F



TEMPERATURE - °F

TEMPERATURE SURVEY

Summary table with fields: Company (THERMOGENICS), Well (K-1A), Field (KLAU MINES), County (LAKE), State (CALIFORNIA), Drillers (T.D. 4180, F.R. 3340, K.B. 2640), Log (F.R. 3340), Elevations (K.B. 2668, D.F. -, G.L. 2640)



Division of Dresser Industries, Inc.