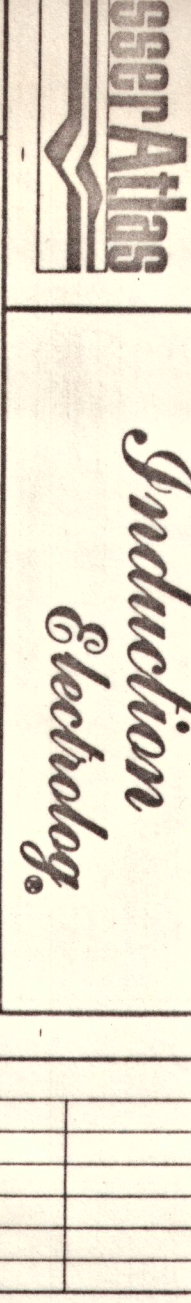


CONFIDENTIAL



WELL NO. 5-1190  
 COMPANY THERMOGENICS  
 WELL K-1A  
 FIELD K-LAV MINES  
 COUNTY LAKE STATE CALIFORNIA  
 LOCATION 2390 N. & 17th N. ST. S.E. CORNER OF TEMP  
 100' 10' 800' 8' 2640' 2640'

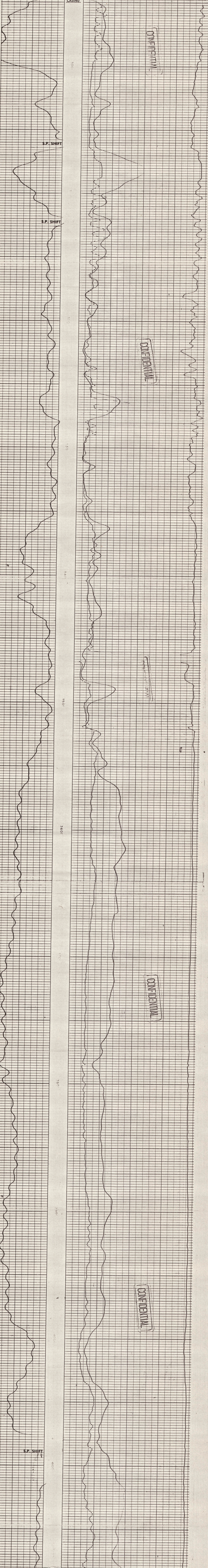
DATE 1-2-78  
 TIME 10:00 AM  
 RUN NO. 252  
 TOOL TYPE 809  
 SCALE CHANGES  
 SCALE UP HOLE  
 SCALE DOWN HOLE

Equipment Used  
 Series No. 809  
 Run No. 01E  
 S.O. 183390  
 Field No. 30560  
 Block No. 30560  
 Panel No. 12801

THIS HEADLINE AND LOG CONFORM TO API RECOMMENDED STANDARD PRACTICE RP-28

CHANGES IN MUD TYPE OR ADDITIONAL SAMPLES	DEPTH	TYPE LOG	SCALE CHANGES	SCALE UP HOLE	SCALE DOWN HOLE
Date   Sample No.					
Depth-Order					
Type Fluid in Hole					
Core   Fluid Loss					
Source of Sample					
Run @ Meas. Temp.					
Run @ Meas. Temp.					
Source - Fluid Pres.					
Run @ BHT					
Run @ BHT					

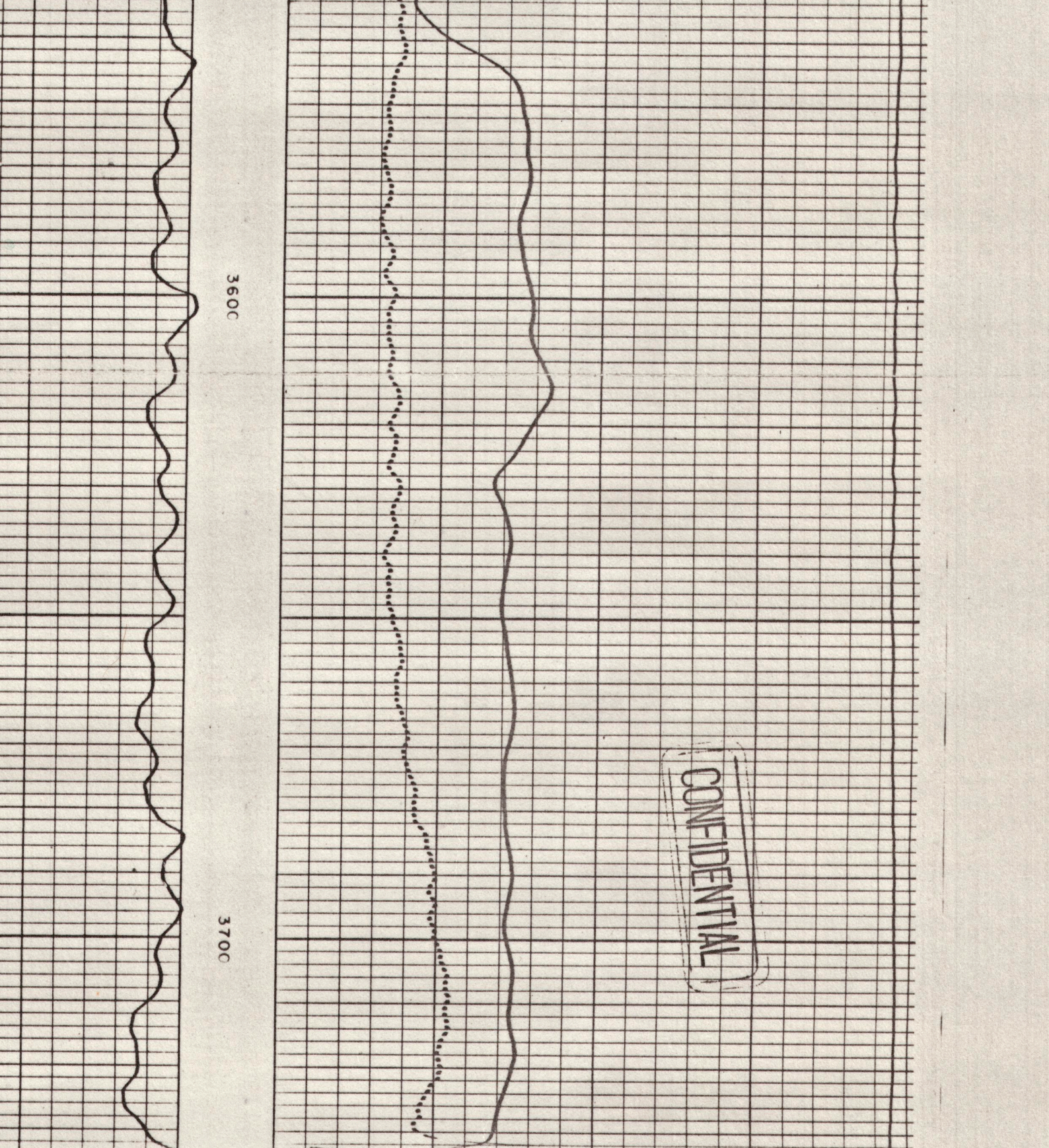
SPONTANEOUS POTENTIAL Millivolts	DEPTH	RESISTIVITY Ohms m <sup>2</sup> /m	CONDUCTIVITY Millimhos/m
	0	1000	0
	100	500	500
	1000	1000	1000
	1000	100	100
	1000	1000	1000



SPONTANEOUS POTENTIAL Millivolts	DEPTH	RESISTIVITY Ohms m <sup>2</sup> /m	CONDUCTIVITY Millimhos/m
	0	1000	0
	100	500	500
	1000	1000	1000
	1000	100	100
	1000	1000	1000

Company THERMOGENICS Drillers T.D. 4180  
 Well K-1A Log F.R. 4180  
 Field K-LAV MINES Log T.D. 4180  
 County LAKE Elevations:  
 State CALIFORNIA K.B. 2668 D.F. G.L. 2640

REPEAT SECTION

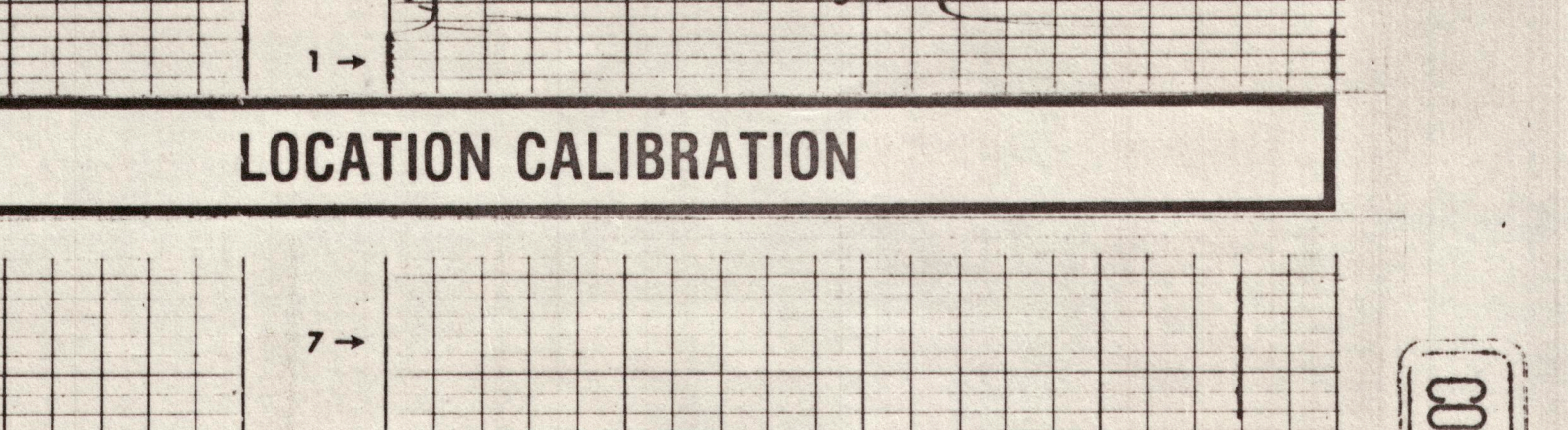
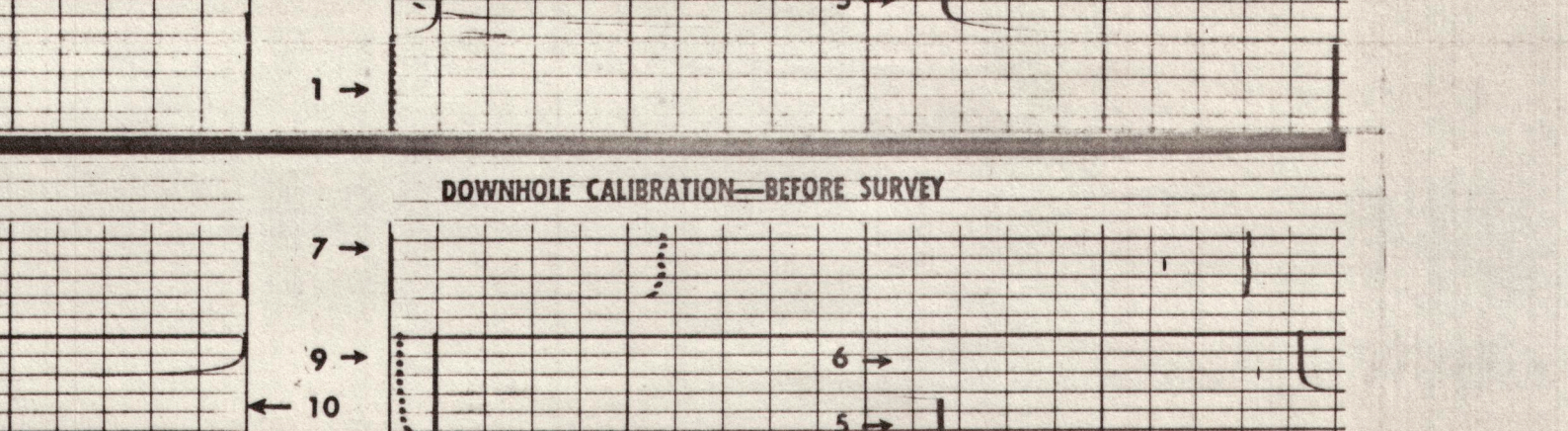


CALIBRATION

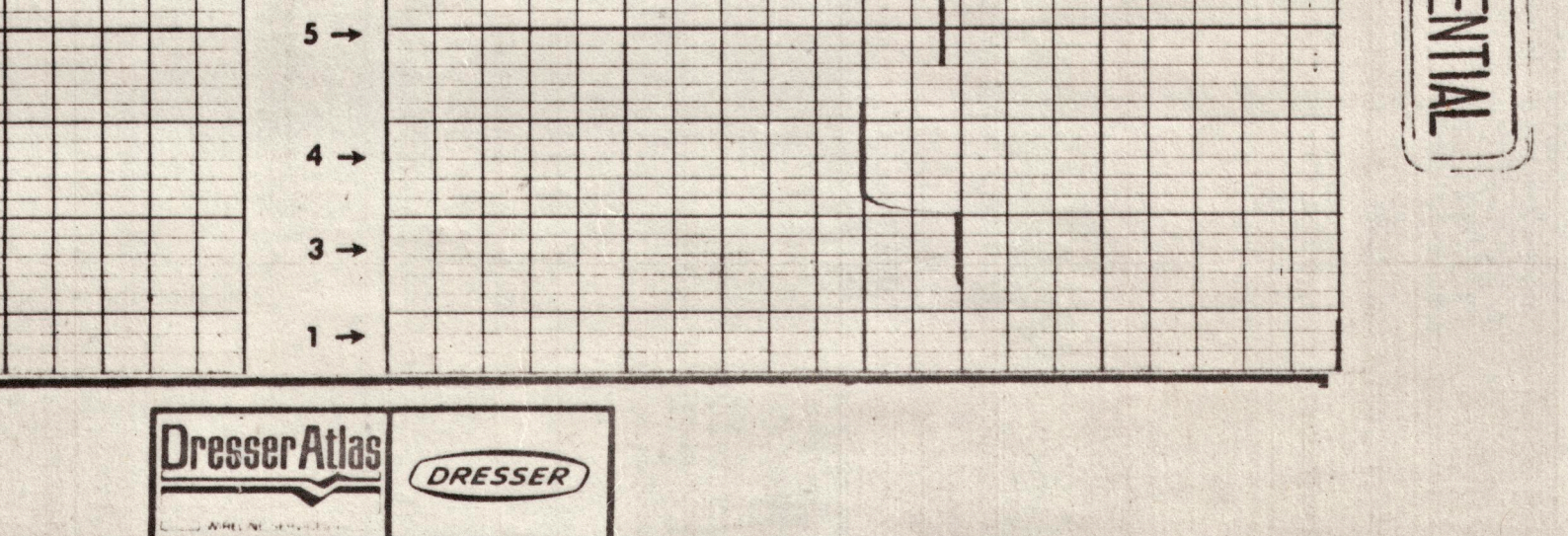
INSTRUMENT CALIBRATION CODE

- |                              |                     |
|------------------------------|---------------------|
| 1. MECHANICAL ZERO           | 12. ELECTRICAL ZERO |
| 2. LOW STANDARD ILD          | 13. CRM CALIBRATE   |
| 3. HIGH STANDARD ILD         | 14. LOW STANDARD    |
| 4. HIGH STANDARD ILD & SEC   | 15. HIGH STANDARD   |
| 5. HIGH REFERENCE ILD        |                     |
| 6. HIGH REFERENCE ILD & SEC  | CALIPER             |
| 7. LOW REFERENCE ILD         | 17. LOW STANDARD    |
| 8. LOW REFERENCE ILD 10 / CD | 18. HIGH STANDARD   |
| 9. HIGH STANDARD SN          |                     |
| 10. HIGH STANDARD SP         |                     |

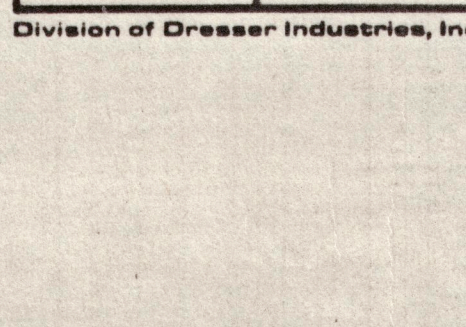
\*DOWN HOLE CALIBRATION STEPS



LOCATION CALIBRATION



CONFIDENTIAL



Division of Dresser Industries, Inc.