

Schlumberger
DUAL INDUCTION SFL
WITH INLINE CONDUCTIVITY LOG

WELL: **MINK 3**
COUNTY: **LAKE** STATE: **CALIFORNIA**
COMPANY: **MINN. EXPLORATION, INC.**

LOG NUMBER: **12-27**
DATE: **12-27-57**
TIME: **8:00**

LOG DEPTH: **8100**
LOG TYPE: **INDUCTION**

LOG DEPTH: **8100**
LOG TYPE: **INDUCTION**

EQUIPMENT DATA
Panel No. **618**
Sonde No. **EA78**
Type Encoder **CPM**
Depth Encoder **DBE**
Pressure Wheel **CPM**
Type Centralizer **CPM**
Stand Off - inches **1 1/2**

CALIBRATION DATA
SFL
Sonde Error - ILM **6.3**
Sonde Error - ILO **11.2**
G.S. Scale - C/S **11.2**
G.S. Source - C/S
I.E. Set to Hole - Depth
S.E. Corr. - Hole Size

LOGGING DATA
SFL
Sonde Error Log - ILM **6.3**
Sonde Error Log - ILO **11.2**
G.S. Scale per 100 Div.
G.S. - T.C. Log

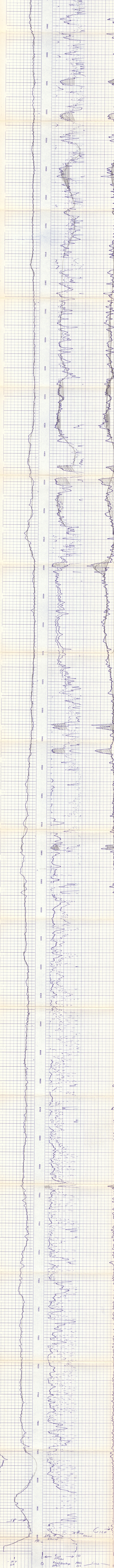
SCALE CHANGES
Type Log: **SP** Scale Up: **100** Scale Down: **100**

REMARKS
SP RECORDED IN TABLE

SPONTANEOUS POTENTIAL MILLIVOLTS
- +

RESISTIVITY DEEP INDUCTION OHMS, M²/M
R₁₀₀ **100**

CONDUCTIVITY MILLIHOMS/M
DEEP INDUCTION **100**



Scale: **100**
SP