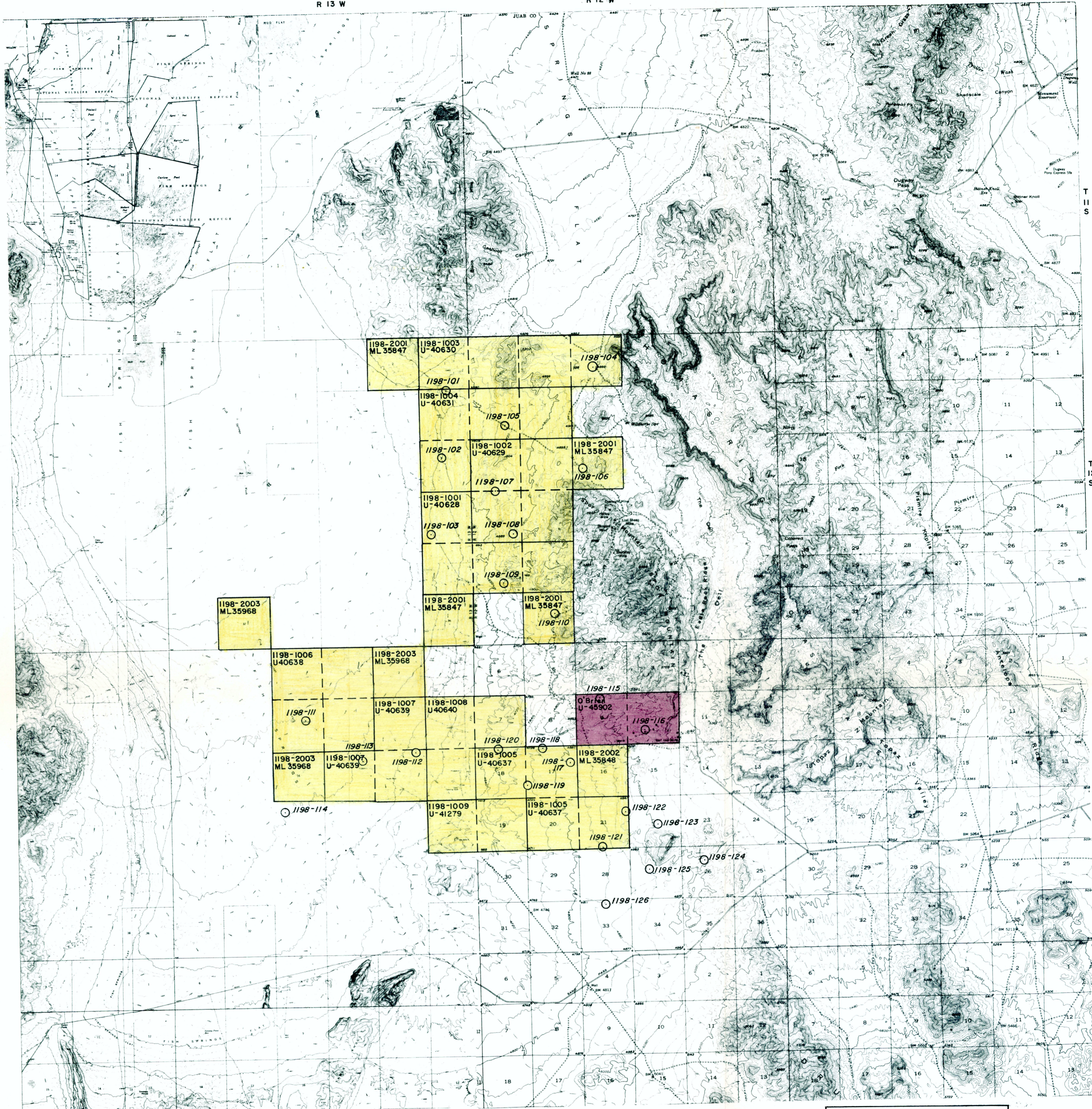


R 13 W

R 12 W

R 11 W



1198-2003
ML 35968

1198-2001
ML 35847

1198-1003
U-40630

1198-104

1198-101

1198-1004
U-40631

1198-105

1198-102

1198-1002
U-40629

1198-2001
ML 35847

1198-106

1198-107

1198-1001
U-40628

1198-103

1198-108

1198-109

1198-2001
ML 35847

1198-2001
ML 35847

1198-110

1198-1006
U-40638

1198-2003
ML 35968

1198-115

1198-111

1198-1007
U-40639

1198-1008
U-40640

O'Brien
U-45302

1198-116

1198-113

1198-120

1198-118

1198-2003
ML 35968

1198-1007
U-40639

1198-112

1198-1005
U-40637

1198-117

1198-2002
ML 35848

1198-119

1198-114

1198-1009
U-41279

1198-1005
U-40637

1198-121

1198-122

1198-123

1198-124

1198-126

NORTH

SCALE 1:62,500

AMAX EXPLORATION, INC.
GEOTHERMAL BRANCH
EXHIBIT A
TOPAZ

9/22/81