



WELL: COVE FORT, SUIT. JURDALE 42-7  
 COMPANY: UNION OIL  
 LOCATION: BEAVER CO., UTAH

LEGEND

NO RETURNS  
 ELECTRIC LOG  
 REGULATE OUT RETURNS  
 CHECK FOR FLOW  
 SAND  
 SHALE  
 LIMESTONE  
 DOLOMITE

WISE  
 WELL INFORMATION SYSTEMS AND ENGINEERING  
 MUD LOG

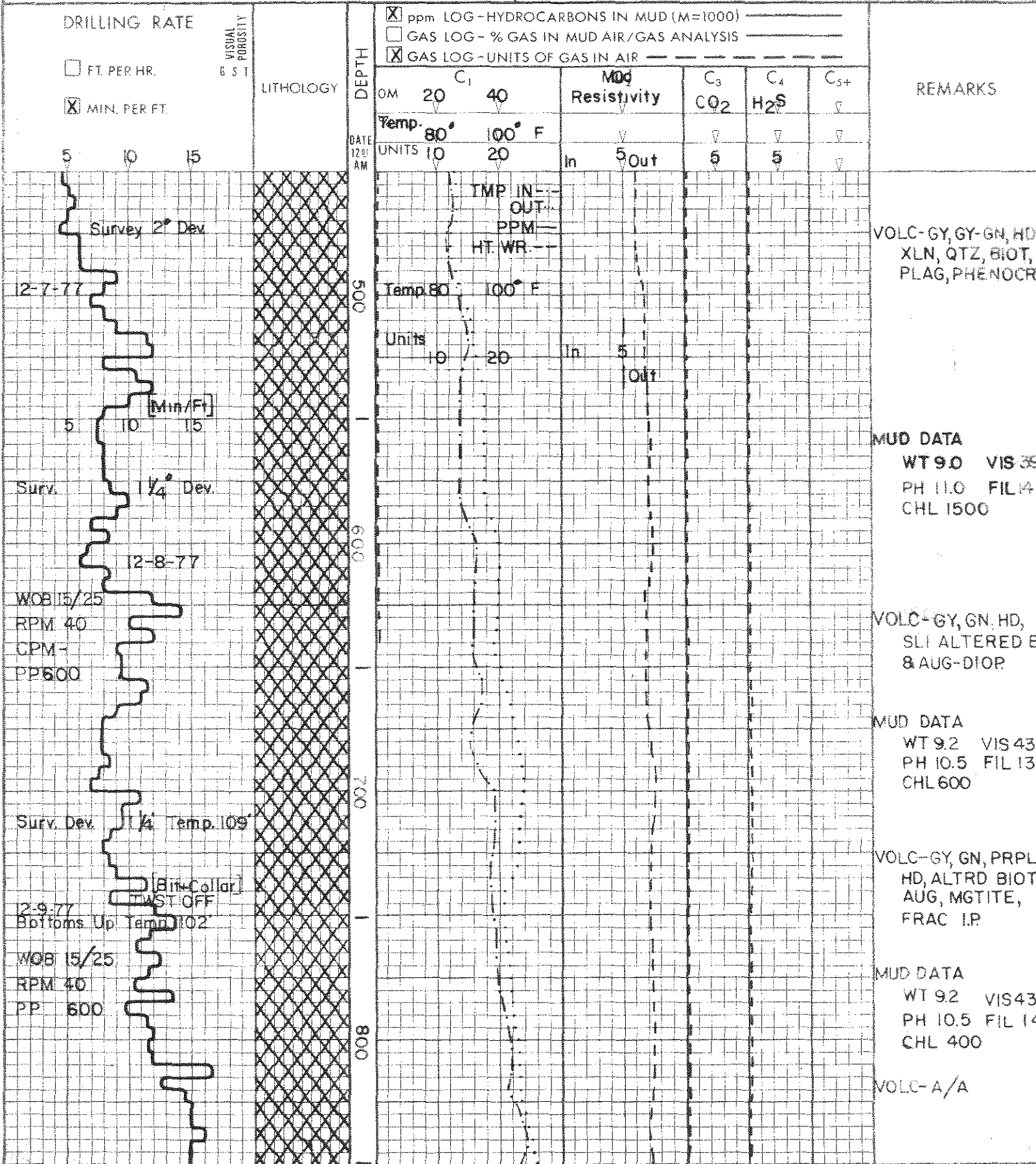
DRILLING RATE		LITHOLOGY	DEPTH	GAS LOG - UNITS OF GAS IN AIR				REMARKS	
FT PER HR	MINI PER FT			Temp	Resistivity	CO <sub>2</sub>	H <sub>2</sub> S		
25	5.0		0M	20	40				
			Temp	80	100				
			UNITS	10	20	In	5	Out	5
BEGIN LOG 11-29-77				HOT WIRE					
				PPM					
				TEMP IN					
				TEMP OUT					
17.5" BIT NO. 2 RTC Y-13		[Cross-hatched pattern]	100					WT 88 VIS 53 PH 9.0 FIL 12 CHL 450 VOLC-R, MED GY, HD VITR LP, MICRO- MACRO XLN, QTZ BIOT, ANDS.	
NB NO. 3 RTC Y-31J 11-30-77			200						WT 92 VIS 43 PH 9.0 FIL 22 CHL 450 VOLC-GY, A/A, GN, VITR, TR PYR
RPM 30/50 WOB 5/25 CPM 50			300						
BIT NO. 3 122 FT 12-1-77 14.5 HRS.			400						
12-4-77 NB NO. 4 25" Hole Center RR BIT NB NO. 5 STC 4JS SCALE CHANGE 5 10 15								VOLC-GY, GY GN, HD QTZ, BIOT, PLAC PHENOCRYSTS	
12-6-77 RPM 30/60 WOB 20 PP 600 CPM 64								VOLC-GY, GN, A/A TR CALC WT. 8.8 VIS 46 PH 11.5 CHL 500 FIL 14	

**LEGEND**

- ICE TRIP CHLORIDES
- NB NEW BIT
- NCB NEW CORE BIT
- DST DRILL STEM TEST
- TG TRIP GAS
- SAND
- SHALE
- LIMESTONE
- DOLOMITE
- R NO RETURNS
- EL ELECTRIC LOG
- CO CIRCULATE OUT RETURNS
- CKF CHECK FOR FLOW

**BAROID  
LOGGING  
SYSTEMS**

**MUD  
LOG**

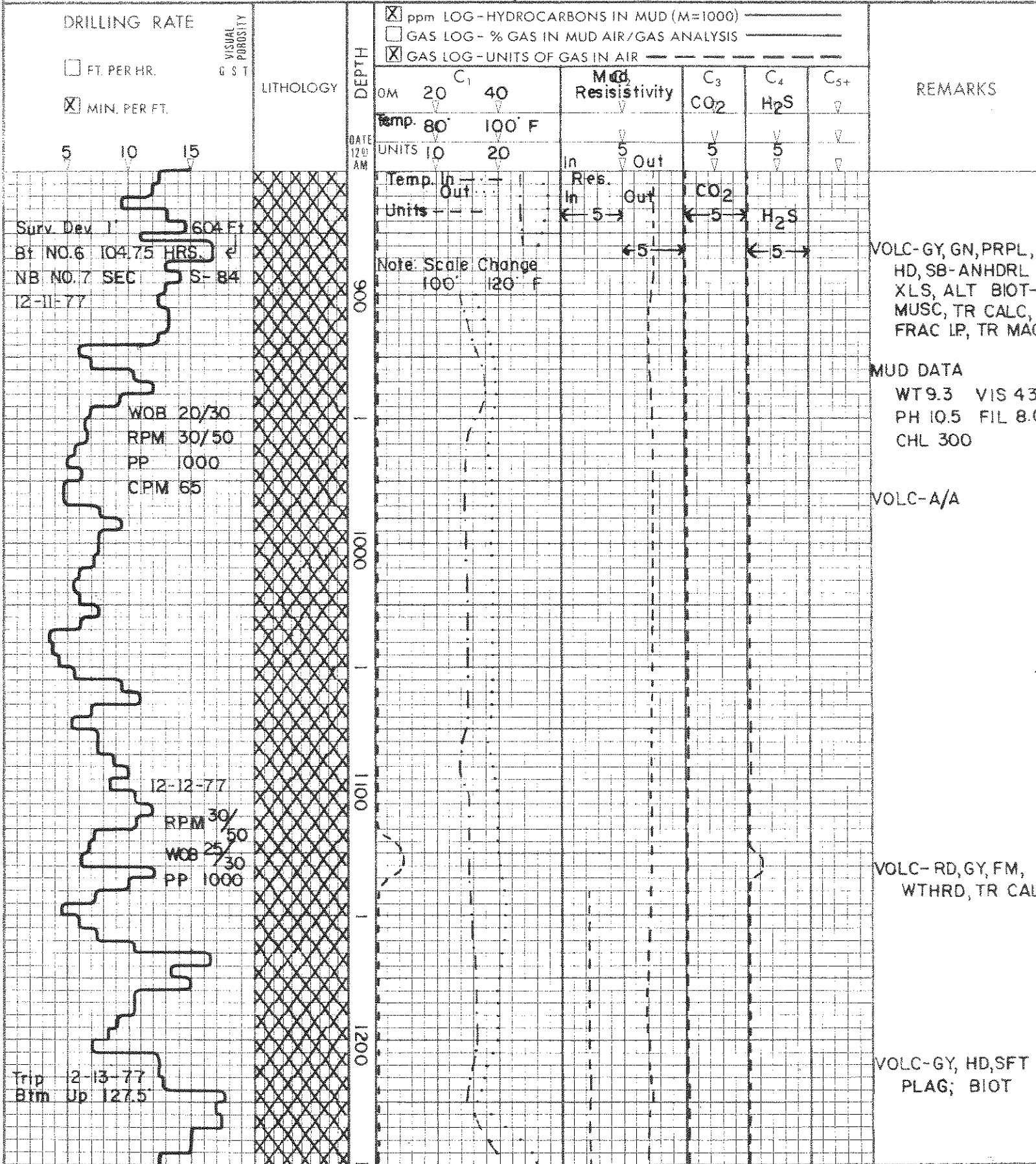


**LEGEND**

- TCL TRIP CHLORIDES
- NB NEW BIT
- NCB NEW CORE BIT
- DST DRILL STEM TEST
- TG TRIP GAS
- SAND
- SHALE
- LIMESTONE
- DOLOMITE
- NR NO RETURNS
- EL ELECTRIC LOG
- CO CIRCULATE OUT RETURNS
- CKF CHECK FOR FLOW

**BAROID LOGGING SYSTEMS**

**MUD LOG**



# N Baroid Petroleum Services

WELL COVE FORT-SULPHURDALE 42-7

COMPANY UNION OIL

LOCATION BEAVER CO., UTAH

## LEGEND

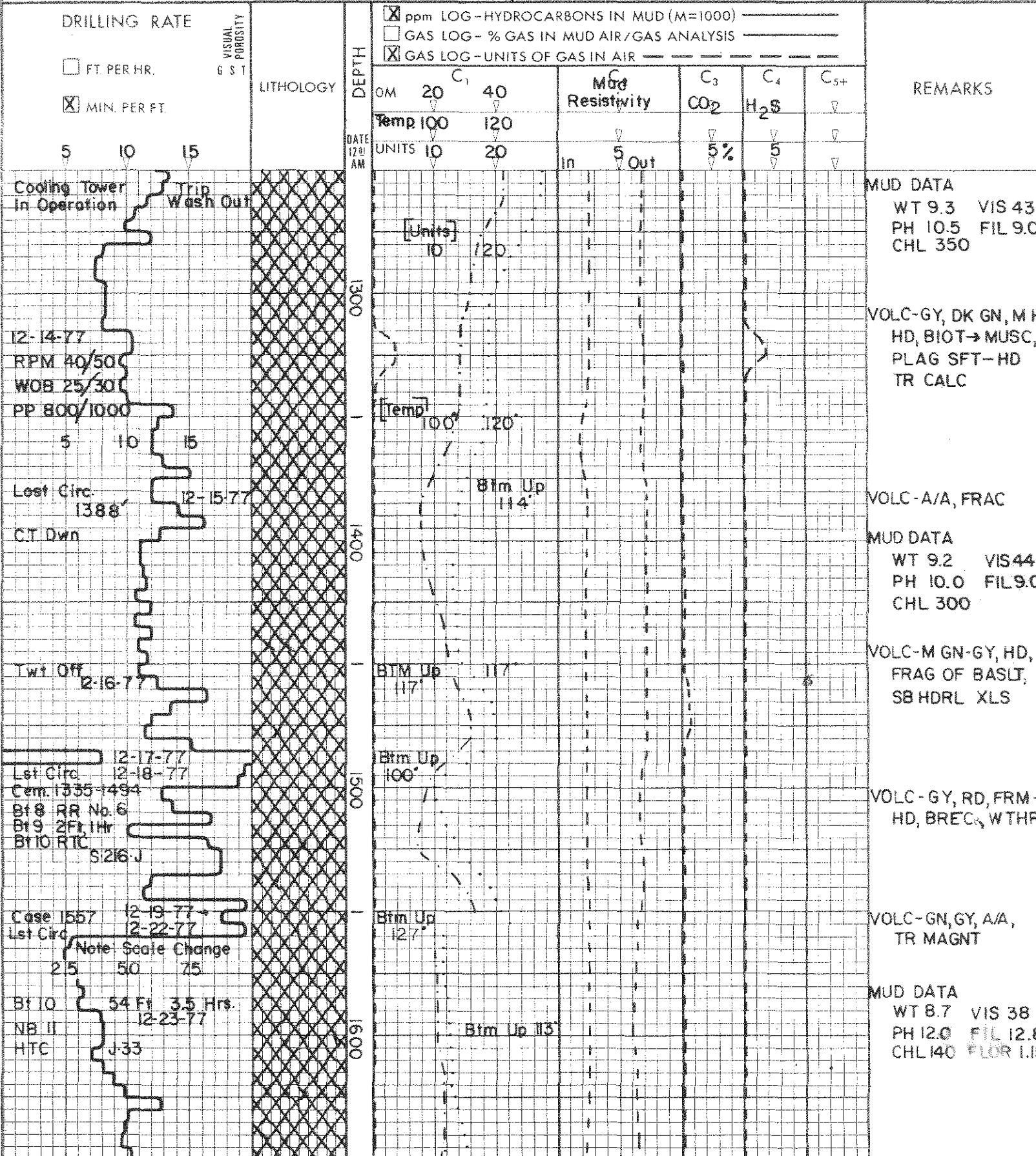
TCL TRIP CHLORIDES  
 NB NEW BIT  
 NCB NEW CORE BIT  
 DST DRILL STEM TEST  
 TG TRIP GAS

IR NO RETURNS  
 EL ELECTRIC LOG  
 CO CIRCULATE OUT RETURNS  
 CKF CHECK FOR FLOW



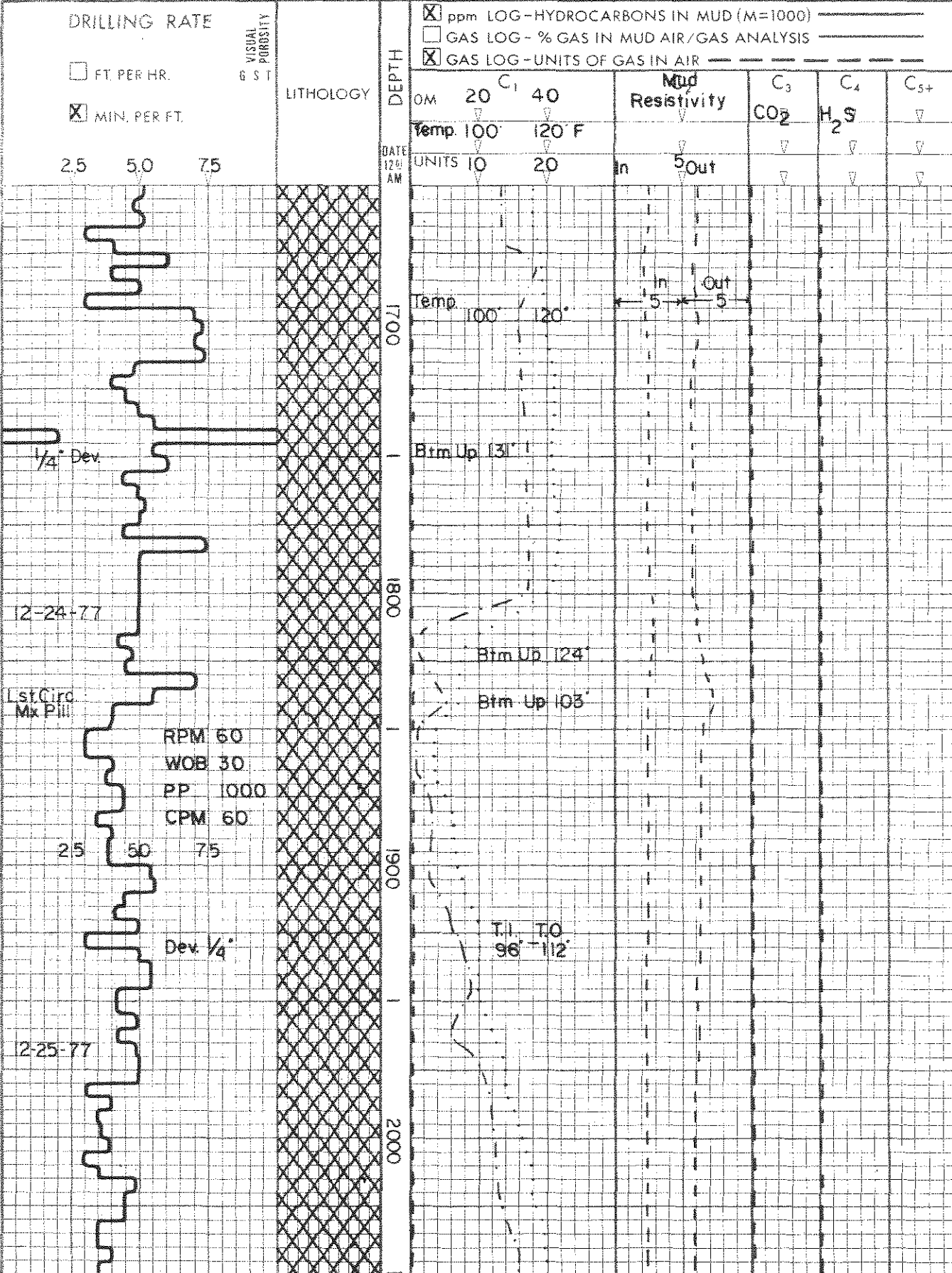
BAROID LOGGING SYSTEMS

MUD LOG



**LEGEND**

- TCL TRIP CHLORIDES
- NB NEW BIT
- NCB NEW CORE BIT
- DST DRILL STEM TEST
- TG TRIP GAS
- SAND
- SHALE
- LIMESTONE
- DOLOMITE
- NO RETURNS
- ELECTRIC LOG
- CIRCULATE OUT RETURNS
- CHECK FOR FLOW



**REMARKS**

VOLC-GN, GY, M HD-  
BREC., PYR-CHPY  
PLAG, QTZ, BIOT  
MUSC., FRAC I.P.  
CALC

**MUD DATA**  
 WT 8.8 VIS 33  
 PH 10.5 CHL 17  
 FLOR 1.35

VOLC - A/A, TR RD

VOLC-GN, GY, M HD-  
FRAC I.P., QTZ, F  
CHPYR

**MUD DATA**  
 WT 8.9 VIS 41  
 PH 11.0 FIL 9.6  
 CHL 150 FLOR 1

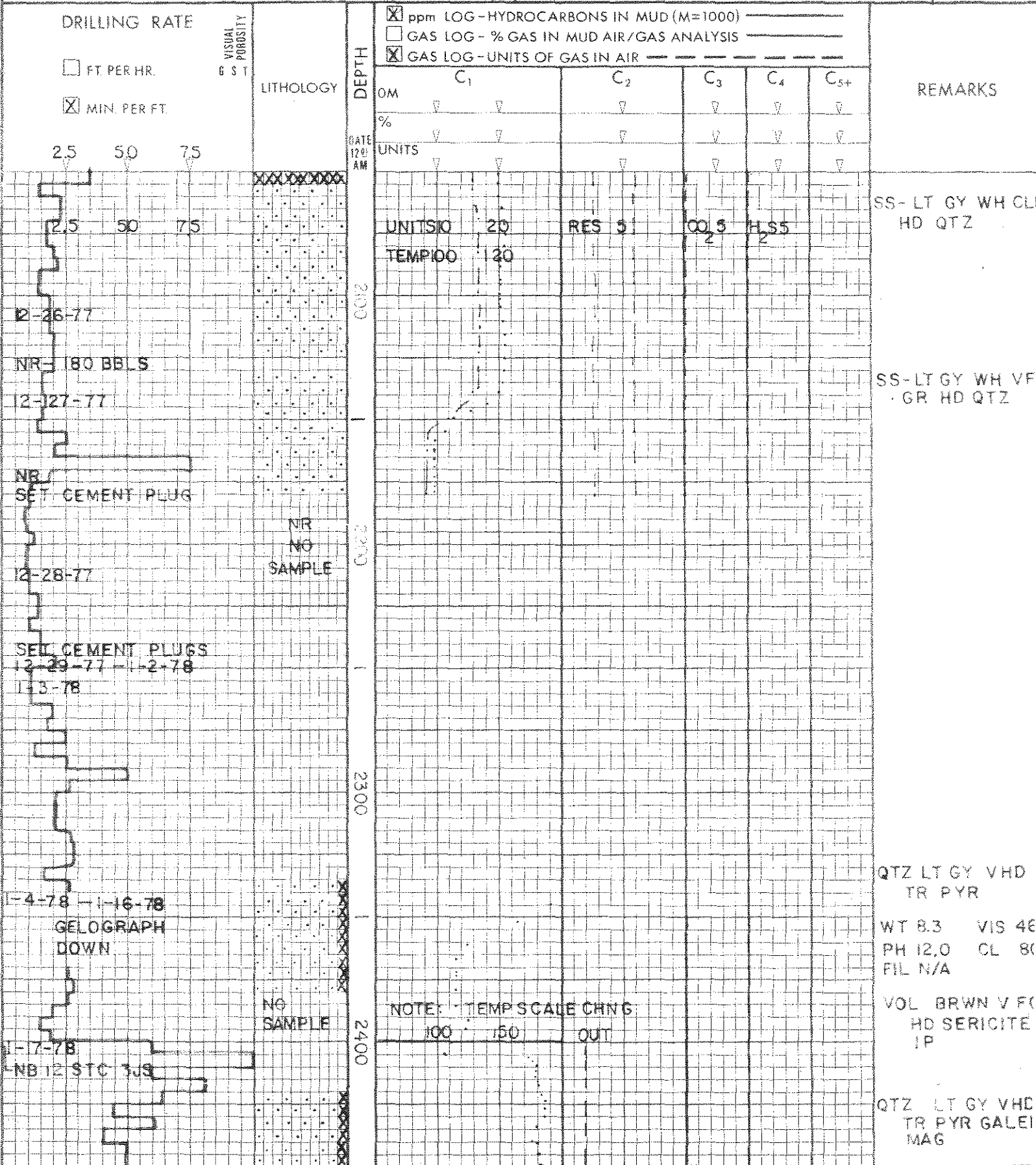
# Baroid Petroleum Services

WELL COVE FORT-SULPHURDALE 42-7  
 COMPANY UNION OIL CO. OF CALIFORNIA  
 LOCATION BEAVER CO., UTAH

## LEGEND

- |                     |                          |
|---------------------|--------------------------|
| TCL TRIP CHLORIDES  | R NO RETURNS             |
| NB NEW BIT          | EL ELECTRIC LOG          |
| NCB NEW CORE BIT    | CO CIRCULATE OUT RETURNS |
| DST DRILL STEM TEST | CKF CHECK FOR FLOW       |
| TG TRIP GAS         |                          |
- 
- |      |       |           |          |
|------|-------|-----------|----------|
| SAND | SHALE | LIMESTONE | DOLOMITE |
|      |       |           |          |

**BAROID LOGGING SYSTEMS**  
**MUD LOG**



NOTE: TEMP SCALE CHNG  
 100 150 OUT

**LEGEND**

- TCL TRIP CHLORIDES
- NB NEW BIT
- NCB NEW CORE BIT
- DST DRILL STEM TEST
- TG TRIP GAS
- SAND
- SHALE
- LIMESTONE
- DOLOMITE
- R NO RETURNS
- EL ELECTRIC LOG
- CO CIRCULATE OUT RETURNS
- CKF CHECK FOR FLOW

DRILLING RATE	VISUAL POROSITY G S T	LITHOLOGY	DEPTH	<input checked="" type="checkbox"/> ppm LOG - HYDROCARBONS IN MUD (M=1000) <input type="checkbox"/> GAS LOG - % GAS IN MUD AIR/GAS ANALYSIS <input checked="" type="checkbox"/> GAS LOG - UNITS OF GAS IN AIR	MUD RESISTIVITY	C <sub>3</sub> CO <sub>2</sub>	C <sub>4</sub> H <sub>2</sub> S	C <sub>5+</sub>	REMARKS
<input type="checkbox"/> FT. PER HR. <input checked="" type="checkbox"/> MIN. PER FT.			DATE 12 01 AM	PPM 20 C <sub>1</sub> TEMP 100 UNITS 10 GAS	OHM-METER	PPM	PPM		
25 50 75			2500	40	5	5			QTZT-ORTHO,LT GR TR PYR,MAG,GAL ENA
		NO SAMPLE		150					A/A
		NO SAMPLE	2600	20					QTZT-LT GRY TR PYR CHALCOPYR
			2600						QTZT-ORTHO,LT GR WHT, TR PYR,MAG
									A/A-W/DOL VEINS
									A/A-W/LT GRN ANHY
			2700						QTZT-WHT-LT GRY, WHT, TR PYR,MAG GALENA
									TR DOL,W/PYR,CALC
									WT 84 FIL N/C VIS 28 CL 250 PH 9.5
		NO SAMPLE	2800						QTZT-WHT-LT GRY, VHD, TR PYR,CAL

I-19-26-78  
 SET CEMENT PLUGS  
 NB13 SEC H 756  
 BN 12  
 206 FT  
 2 1/4 IN

I-27-78

I-28-29-78  
 NB14 SMITH 7JA

WELL COVE FORT-SULPHURDALE 42-7  
COMPANY UNION OIL OF CALIFORNIA  
LOCATION BEAVER CO., UTAH

**LEGEND**

- |                     |                          |
|---------------------|--------------------------|
| TCL TRIP CHLORIDES  | IR NO RETURNS            |
| NB NEW BIT          | EL ELECTRIC LOG          |
| NCB NEW CORE BIT    | CO CIRCULATE OUT RETURNS |
| DST DRILL STEM TEST | CKF CHECK FOR FLOW       |
| TG TRIP GAS         |                          |
- 
- |      |       |           |          |
|------|-------|-----------|----------|
| SAND | SHALE | LIMESTONE | DOLOMITE |
|      |       |           |          |

**BAROID**  
LOGGING  
SYSTEMS

**MUD**  
LOG

DRILLING RATE		VISUAL POROSITY G ST	LITHOLOGY	DEPTH	MUD LOG - HYDROCARBONS IN MUD (M=1000)					REMARKS	
FT. PER HR.	MIN. PER FT.				PPM C <sub>1</sub>	MUD RESISTIVITY	C <sub>3</sub> CO <sub>2</sub>	C <sub>4</sub> H <sub>2</sub> S	C <sub>5+</sub>		
<input type="checkbox"/>	<input checked="" type="checkbox"/>				TEMP 100	150	OHM-METER	PPM	PPM		
25	50			DATE 12/1 AM	GAS 10	20	5	5M	5		
				2900	IN - OUT		MUD RESISTIVITY OHM-METER	CO <sub>2</sub> PPM	H <sub>2</sub> S PPM		QTZT-WHT-LTGR VHD, CALC, TR LS, PYR
					GAS 10	120	5	5M	5		A/A
							IN - OUT				A/A
											A/A-W/TR S
											A/A-W/CAL SS, GY
				3000							DOL-DKGY W/CA VEINS, QTZT-LTGR TO WH, TR PYR
											A/A
											DOL-DK TO LTGR TR PYR
											DOL-WHT-DK GRY, MICROXLN, TR P
											DOL-A/A
				3100							WT 84 FIL N/C VIS 28 CL 215 PH 9.2
											LS-WHT, FRM, VFXLN
											DOL-WHT-DK GRY, APHAN-VFXLN, PYR, CALC, CHRT
											DOL-A/A, FLOR-1.2
				3200							DOL-A/A

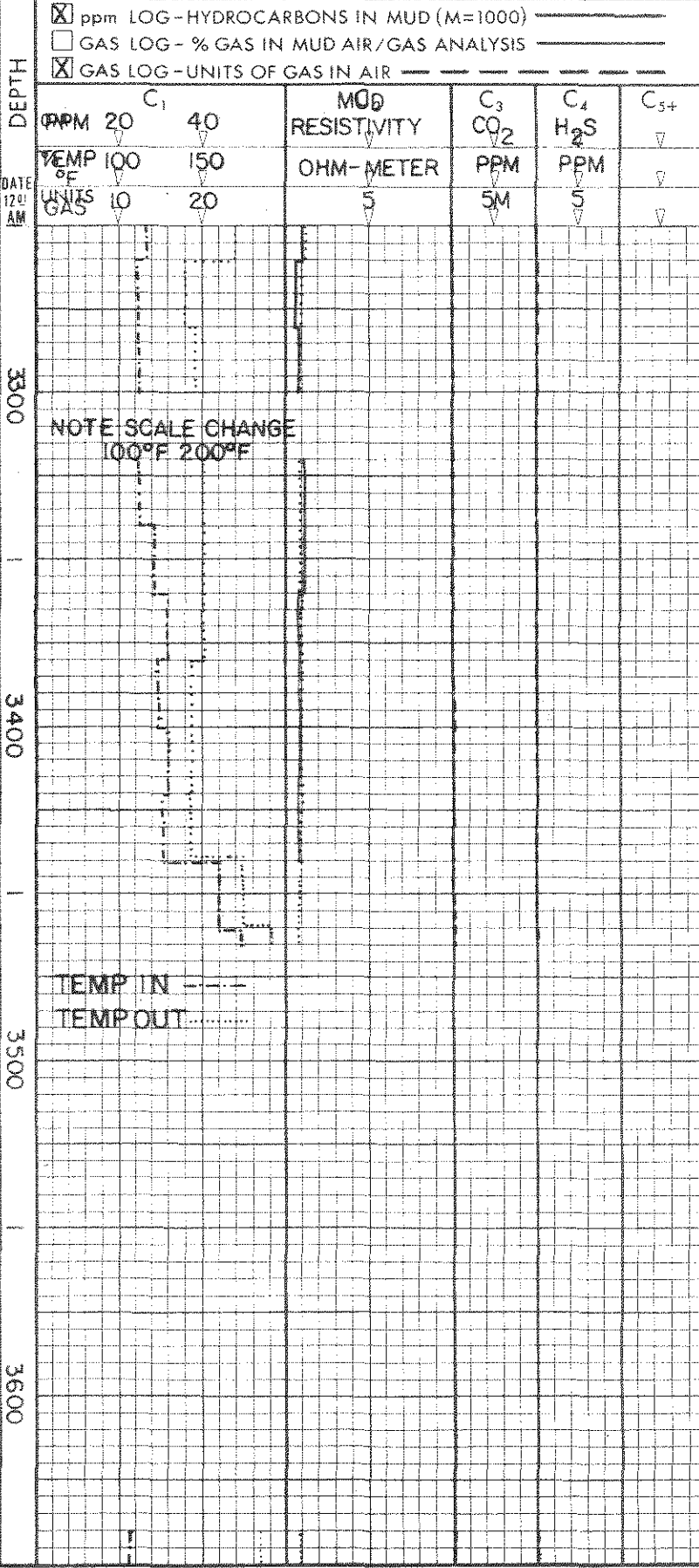
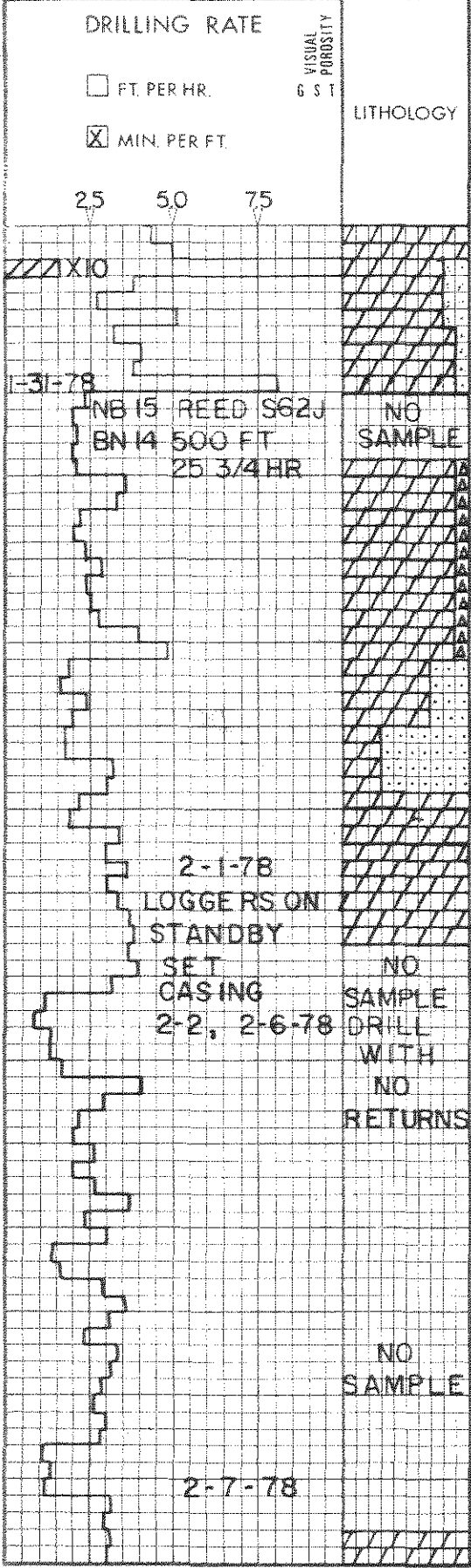


WELL COVE FORT-SULPHURDALE 42-7  
COMPANY UNION OIL OF CALIFORNIA  
LOCATION BEAVER CO., UTAH

**LEGEND**

- TCL TRIP CHLORIDES
- NB NEW BIT
- NCB NEW CORE BIT
- DST DRILL STEM TEST
- TG TRIP GAS
- SAND
- SHALE
- LIMESTONE
- DOLOMITE
- NO RETURNS
- ELECTRIC LOG
- CIRCULATE OUT RETURNS
- CHECK FOR FLOW

**BAROID**  
**LOGGING**  
**SYSTEMS**  
**MUD**  
LOG



**REMARKS**

SS-BUFF LT BRN-GF  
TR CHALCOPYR,  
PYR

CHRT-CLR-WHT,BL  
GRY,ANG

DOL-WHT-DK GRY V  
FXLN,CALC VEIN

SS-LT GRY-BRN,F

DOL-A/A,TR CHALC  
PYR

DOL A/A

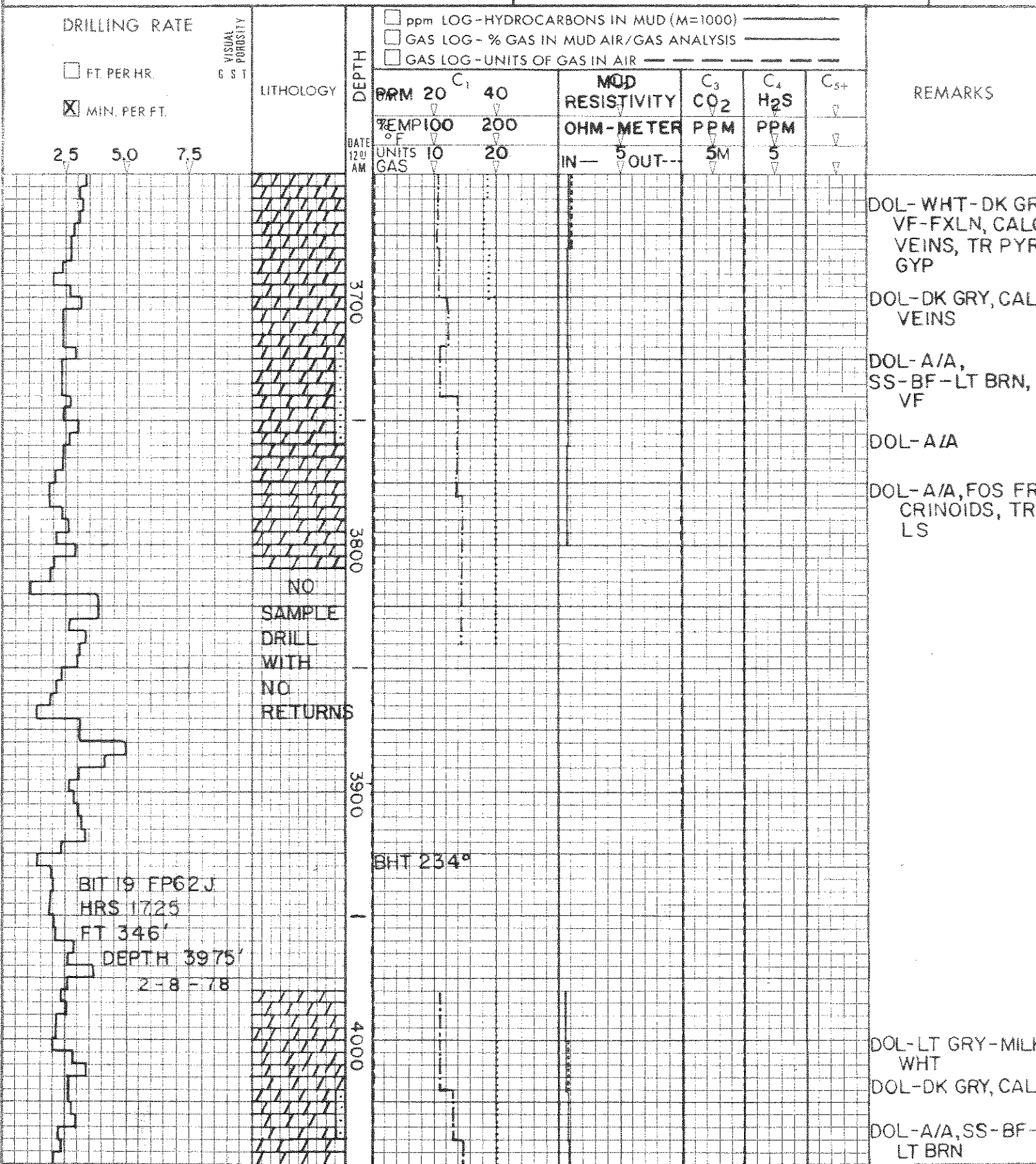
WELL COVE FORT SULPHURDALE 42-7  
 COMPANY UNION OIL OF CALIFORNIA  
 LOCATION BEAVER CO., UTAH

**LEGEND**

- TCL TRIP CHLORIDES
- NB NEW BIT
- NCB NEW CORE BIT
- DST DRILL STEM TEST
- TG TRIP GAS
- SAND
- SHALE
- LIMESTONE
- DOLOMITE
- NO RETURNS
- EL ELECTRIC LOG
- CO CIRCULATE OUT RETURNS
- CKF CHECK FOR FLOW

**BAROID**  
**LOGGING**  
**SYSTEMS**

**MUD**  
**LOG**



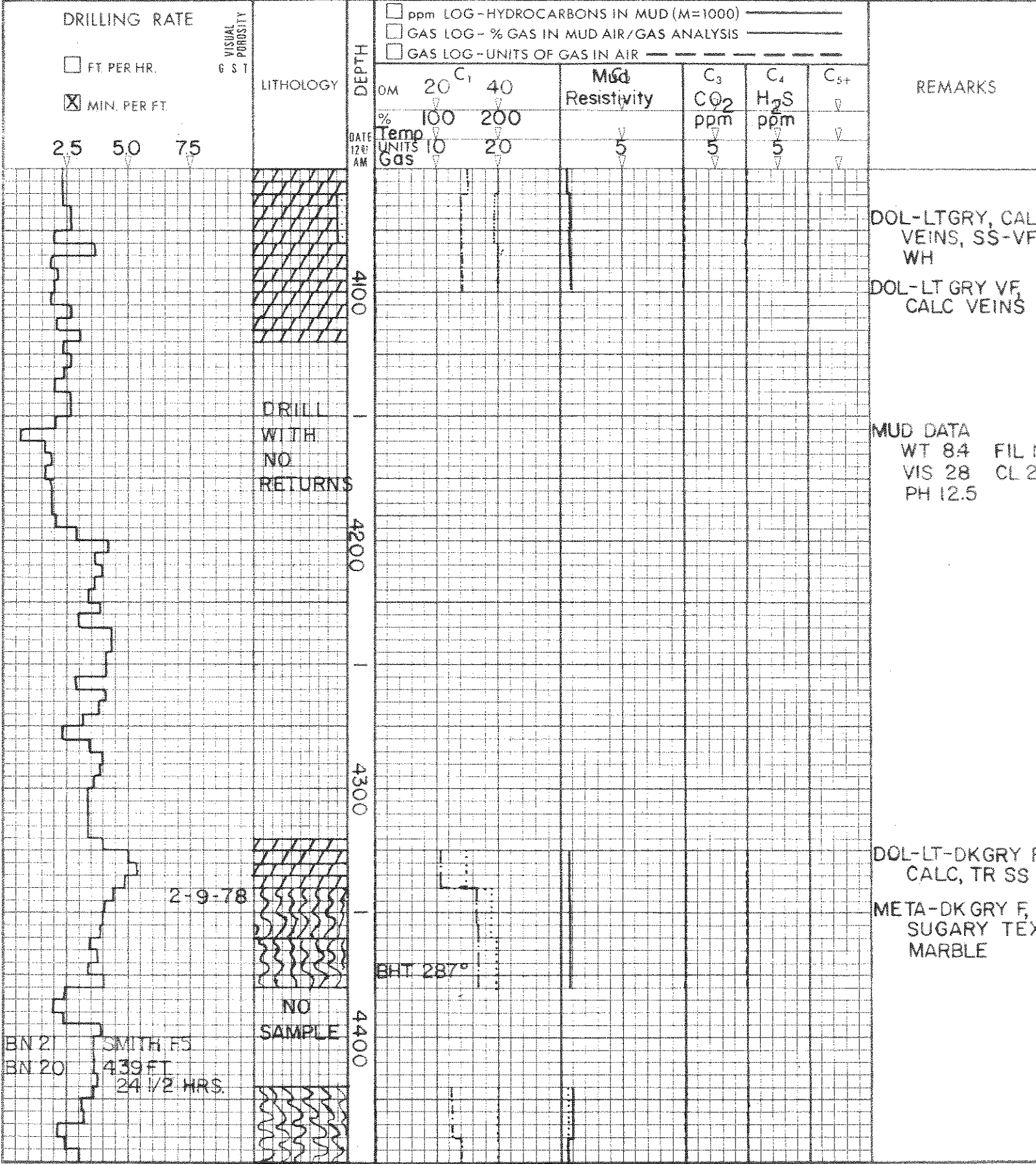
WELL COVE FORT SULPHURDALE 42 7  
 COMPANY UNION OIL OF CALIF  
 LOCATION BEAVER CO UTAH

**LEGEND**

TCL TRIP CHLORIDES	NR NO RETURNS		
NB NEW BIT	EL ELECTRIC LOG		
NCB NEW CORE BIT	CO CIRCULATE OUT RETURNS		
DST DRILL STEM TEST	CKF CHECK FOR FLOW		
TG TRIP GAS			
SAND	SHALE	LIMESTONE	DOLOMITE

**BAROID**  
**LOGGING**  
**SYSTEMS**

**MUD**  
**LOG**



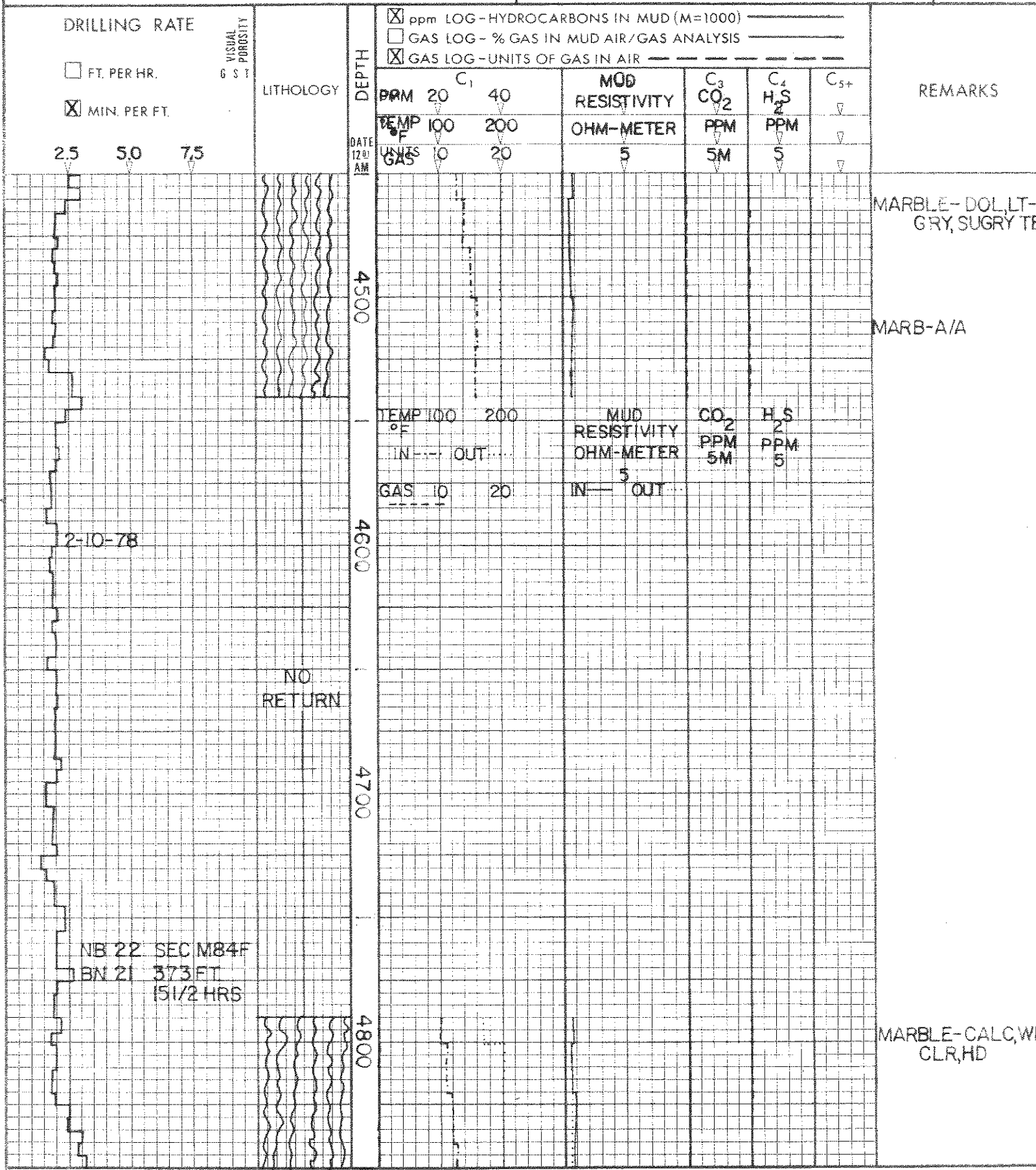
WELL COVE FORT-SULPHURDALE 42-7  
 COMPANY UNION OIL OF CALIFORNIA  
 LOCATION BEAVER CO., UTAH

**LEGEND**

- TCL TRIP CHLORIDES
- NB NEW BIT
- NCB NEW CORE BIT
- DST DRILL STEM TEST
- TG TRIP GAS
- SAND
- SHALE
- LIMESTONE
- DOLOMITE
- NR NO RETURNS
- EL ELECTRIC LOG
- CO CIRCULATE OUT RETURNS
- CKF CHECK FOR FLOW

**BAROID LOGGING SYSTEMS**

**MUD LOG**





WELL COVE FORT-SULPHURDALE 42-7  
 COMPANY UNION OIL OF CALIFORNIA  
 LOCATION BEAVER CO., UTAH

**LEGEND**

TCL TRIP CHLORIDES  
 NB NEW BIT  
 NCB NEW CORE BIT  
 DST DRILL STEM TEST  
 TG TRIP GAS  
 SAND  
 SHALE  
 LIMESTONE  
 DOLOMITE



**BAROID LOGGING SYSTEMS**

**MUD LOG**

DRILLING RATE

FT. PER HR.  
 MIN. PER FT.

2.5 50 7.5

VISUAL POROSITY  
 G S T

LITHOLOGY

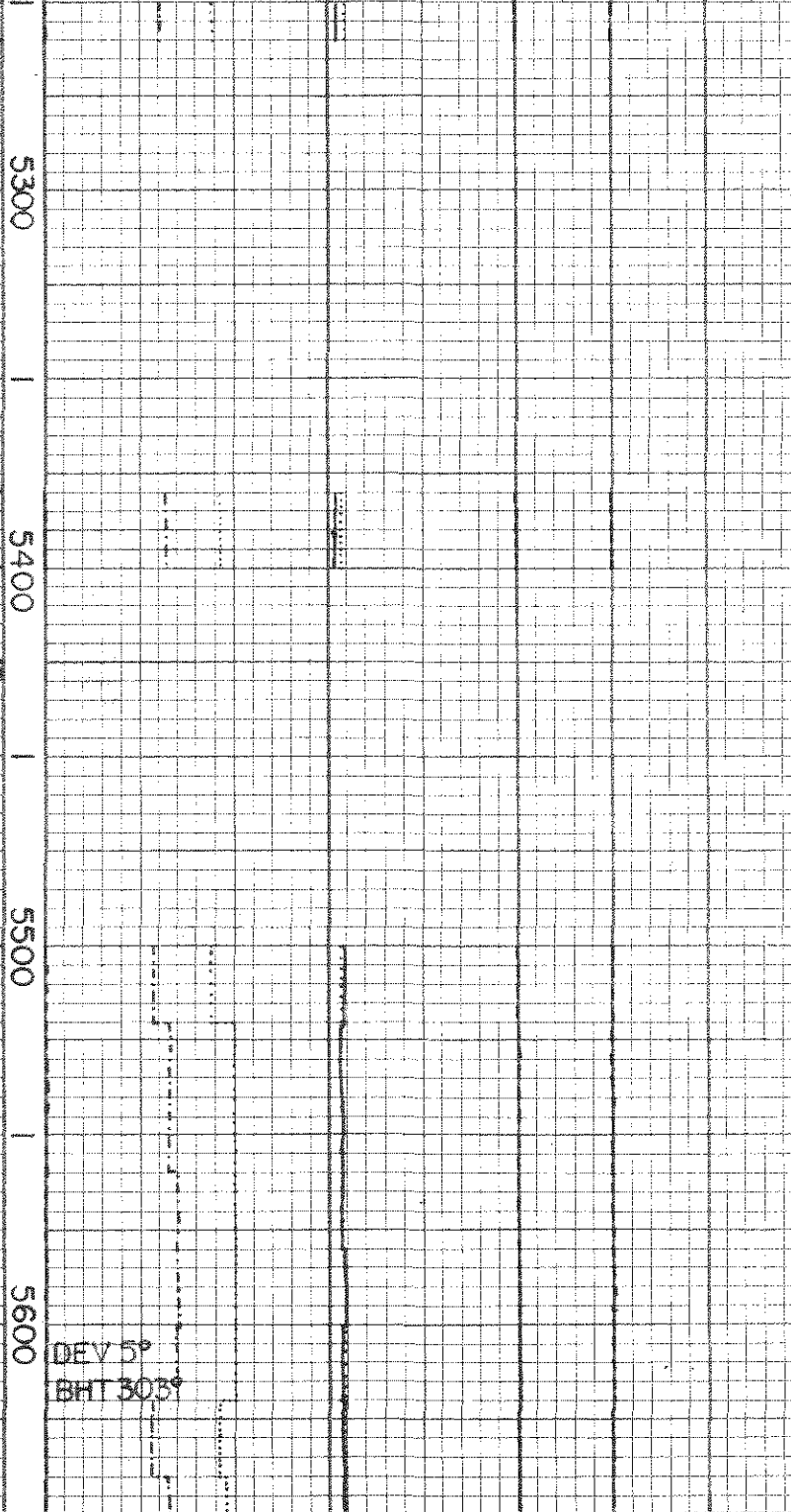
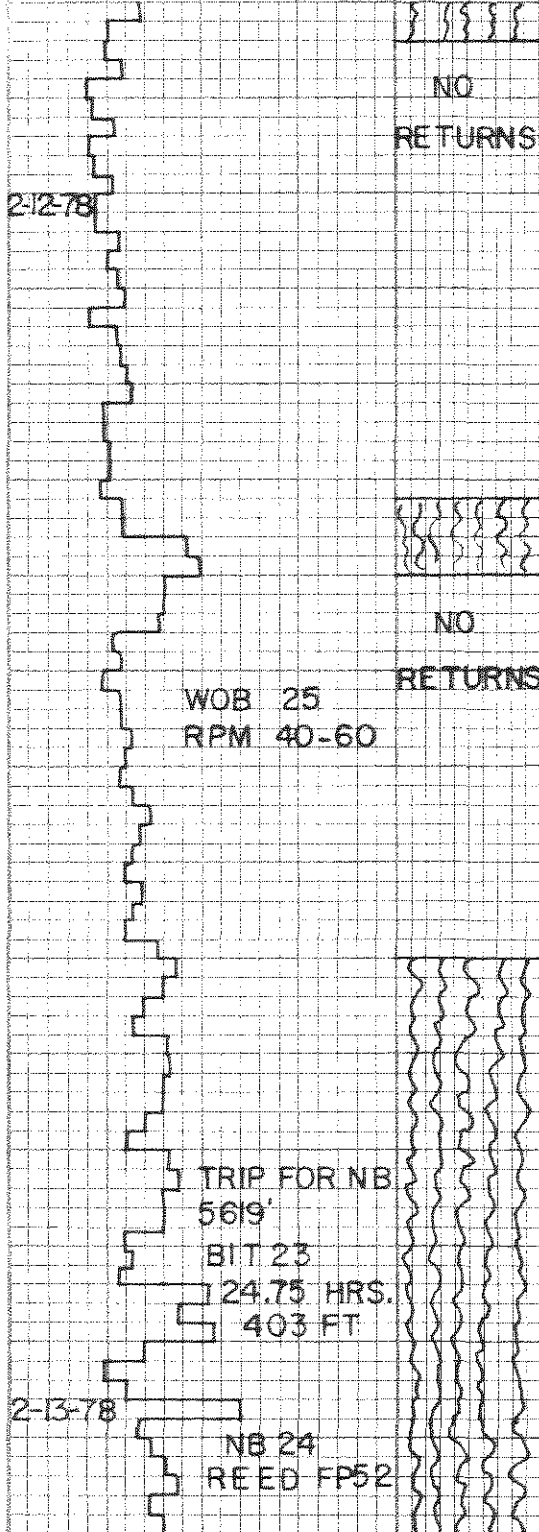
DEPTH

DATE  
 12:01 AM

ppm LOG - HYDROCARBONS IN MUD (M=1000)  
 GAS LOG - % GAS IN MUD AIR/GAS ANALYSIS  
 GAS LOG - UNITS OF GAS IN AIR

BRM	20	40	MUD RESISTIVITY	C <sub>3</sub> CO <sub>2</sub>	C <sub>4</sub> H <sub>2</sub> S	C <sub>5+</sub>
TEMP OF MUD	100	200	OHM-METER	PPM	PPM	
WLGAS	10	20	5	5M	5	

REMARKS



MARBLE-WH CL  
 DOLO TR PYR  
 IN FRAC HD

MARBLE A/A  
 CAL

WT 85 FIL N/C  
 VIS 28 CL 2500  
 PH 11.0

MARB-WHT, CLR, L  
 GRY, F-MXLN  
 FRM, GRANUL  
 SE, TR PRY

MARB-A/A, GRY

MARB-A/A, LT-DK

WELL COVE FORT SULPHURDALE 42-7  
 COMPANY UNION OIL OF CALIFORNIA  
 LOCATION BEAVER CO UTAH

**LEGEND**

- TCL TRIP CHLORIDES
- NB NEW BIT
- NCB NEW CORE BIT
- DST DRILL STEM TEST
- TG TRIP GAS
- SAND
- SHALE
- LIMESTONE
- DOLOMITE
- R NO RETURNS
- eL ELECTRIC LOG
- CO CIRCULATE OUT RETURNS
- CKF CHECK FOR FLOW

**BAROID LOGGING SYSTEMS**

**MUD LOG**

**DRILLING RATE**

- FT. PER HR.
- MIN. PER FT.

2.5 5.0 7.5

VISUAL POROSITY  
6 S T

LITHOLOGY

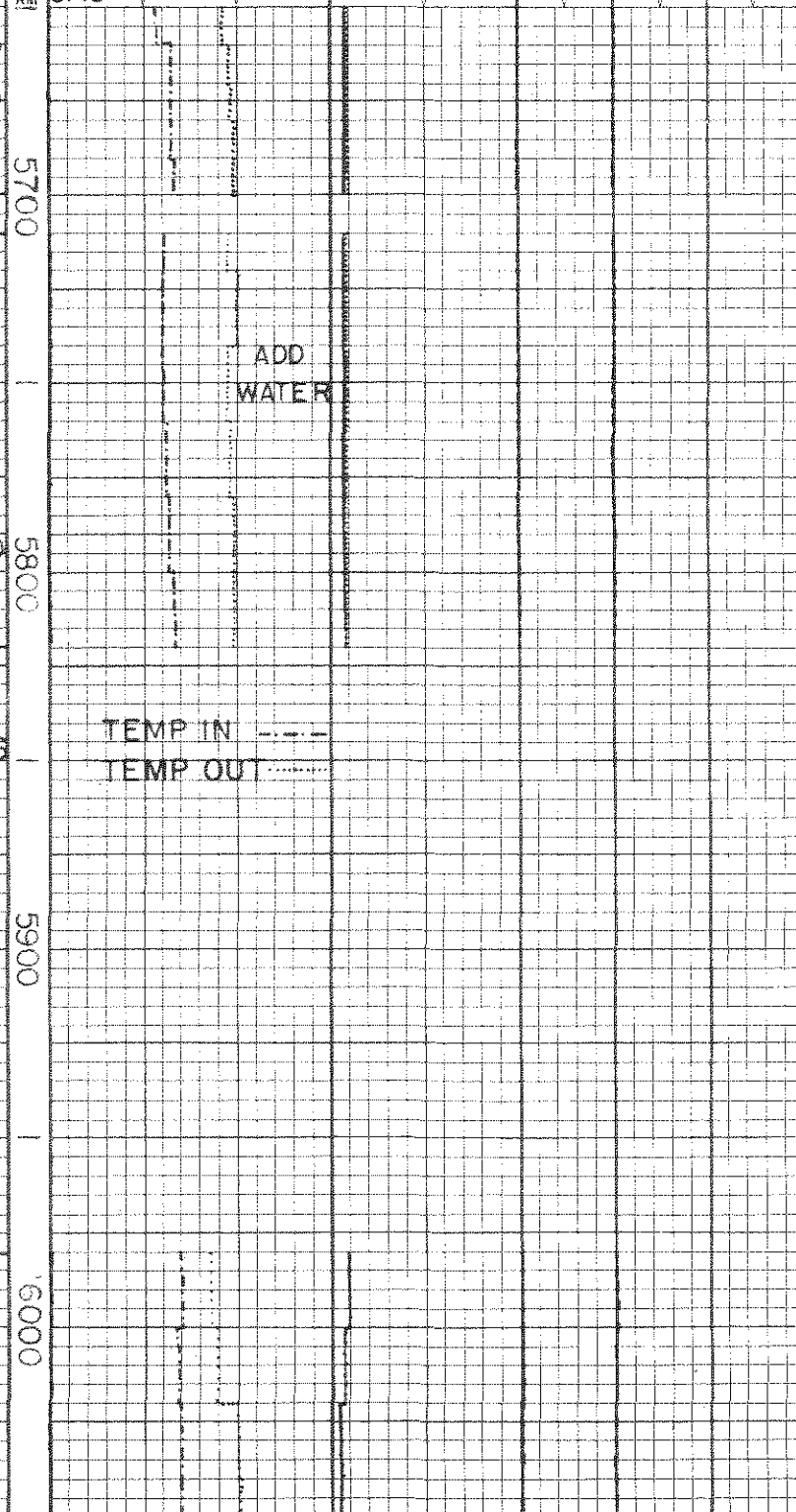
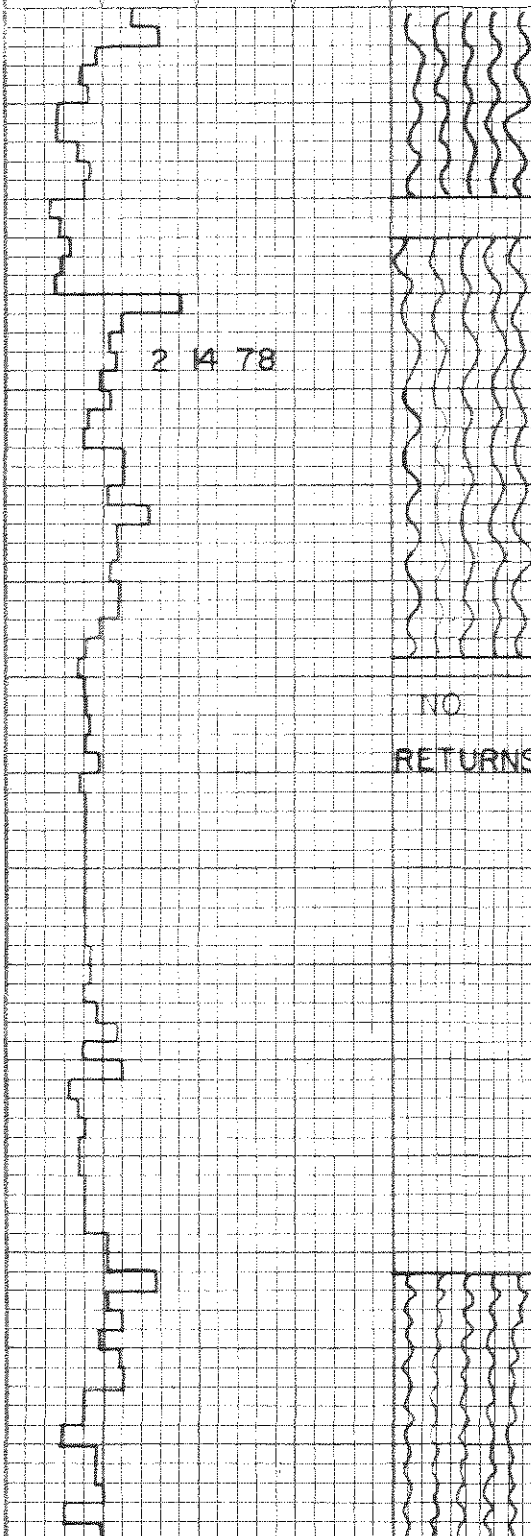
DEPTH

DATE  
12 21 AM

- ppm LOG - HYDROCARBONS IN MUD (M=1000)
- GAS LOG - % GAS IN MUD AIR/GAS ANALYSIS
- GAS LOG - UNITS OF GAS IN AIR

PPM 20	C <sub>1</sub> 40	MUD RESISTIVITY OHM-METER	C <sub>2</sub> CO <sub>2</sub> PPM	C <sub>3</sub> H <sub>2</sub> S PPM	C <sub>4</sub>	C <sub>5+</sub>
100	200	5	5	5		
UNITS 10	20					

REMARKS



MARBLE-WH-CLR  
PYR, POSS CHAL  
POSS GALENA,  
FXLN, HD

MARBLE WH CLR  
FXLN TR PYR

MARBLE A/A

NO RETURNS

TEMP IN ---  
TEMP OUT - - - -

ADD WATER

MARB-WHT,LTGRY,V  
FXLN,HD,TR PYR  
CHALCO,GRAPH

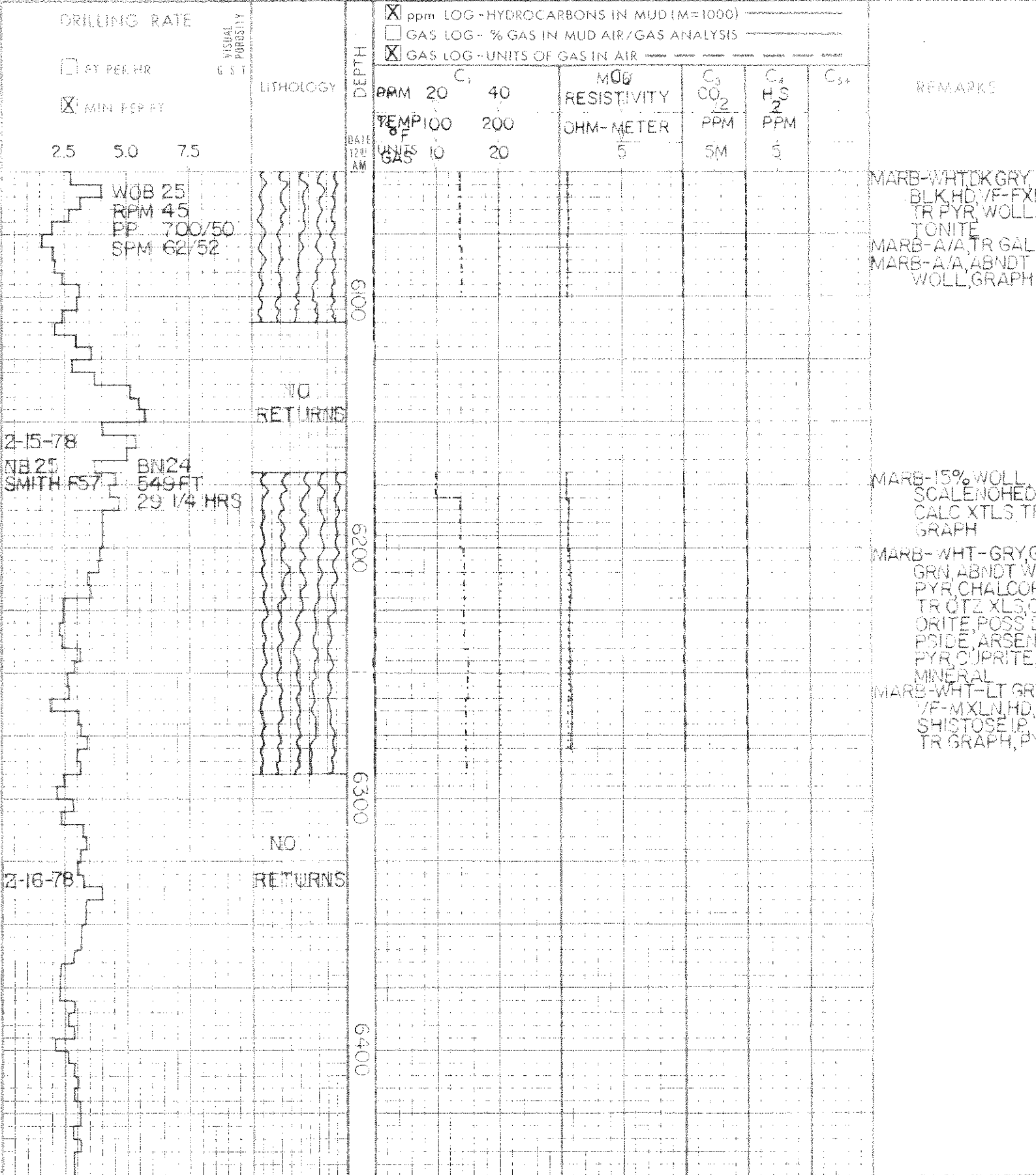
MARB-A/A

WELL COVE FORT-SULPHURDALE 42-7  
COMPANY UNION OIL OF CALIFORNIA  
LOCATION BEAVER CO., UTAH

**LEGEND**

- TCL TRIP CHLORIDES
- NB NEW BIT
- NCB NEW CORE BIT
- DST DRILL STEM TEST
- TG TRIP GAS
- SAND
- SHALE
- LIMESTONE
- DOUBT
- NO RETURNS
- ELECTRIC LOG
- CIRCULATE OUT RETURNS
- CHEK CHECK FOR FLOW

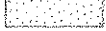
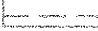
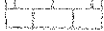

**BAROID**  
LOGGING  
SYSTEMS  
**MUD**  
LOG





WELL COVE EAST-SULPHURDALE 42-7  
 COMPANY UNION OIL OF CALIFORNIA  
 LOCATION BEAVER CO, UTAH

**LEGEND**

TCL TRIP CHLORIDES	R NO RETURNS		
NB NEW BIT	EL ELECTRIC LOG		
NCB NEW CORE BIT	CO CIRCULATE OUT RETURNS		
DST DRILL STEM TEST	CRF CHECK FOR FLOW		
TG TRIP GAS			
SAND 	SHALE 	LIMESTONE 	DOLOMITE 

**BAROID LOGGING SYSTEMS**  
