



BIRDWELL

Electric Log

COMPANY: AMX EXPLORATION, INC.

WELL: 31-32

FIELD: Alum

COUNTY: Esmeralda

LOCATION: N.A.

STATE: Nevada

DATE: Mar 27, 1983

DRILLING MEASURED FROM: G.L.

LOG MEASURED FROM: G.L.

DEPTH-LOGGER: 1498'

DEPTH-DRILLER: 1986'

CASING-LOGGER: 214'

CASING-DRILLER: 4-1/2" @ 214'

BIT SIZE: 3, 3 1/2, & 3"

TRIPLE DRILL PIPE: 1000'

TRIPLE DRILL PIPE: 500'

TRIPLE DRILL PIPE: 500'

TRIPLE DRILL PIPE: 500'

TRIPLE DRILL PIPE: 500'

TRIPLE DRILL PIPE: 500'

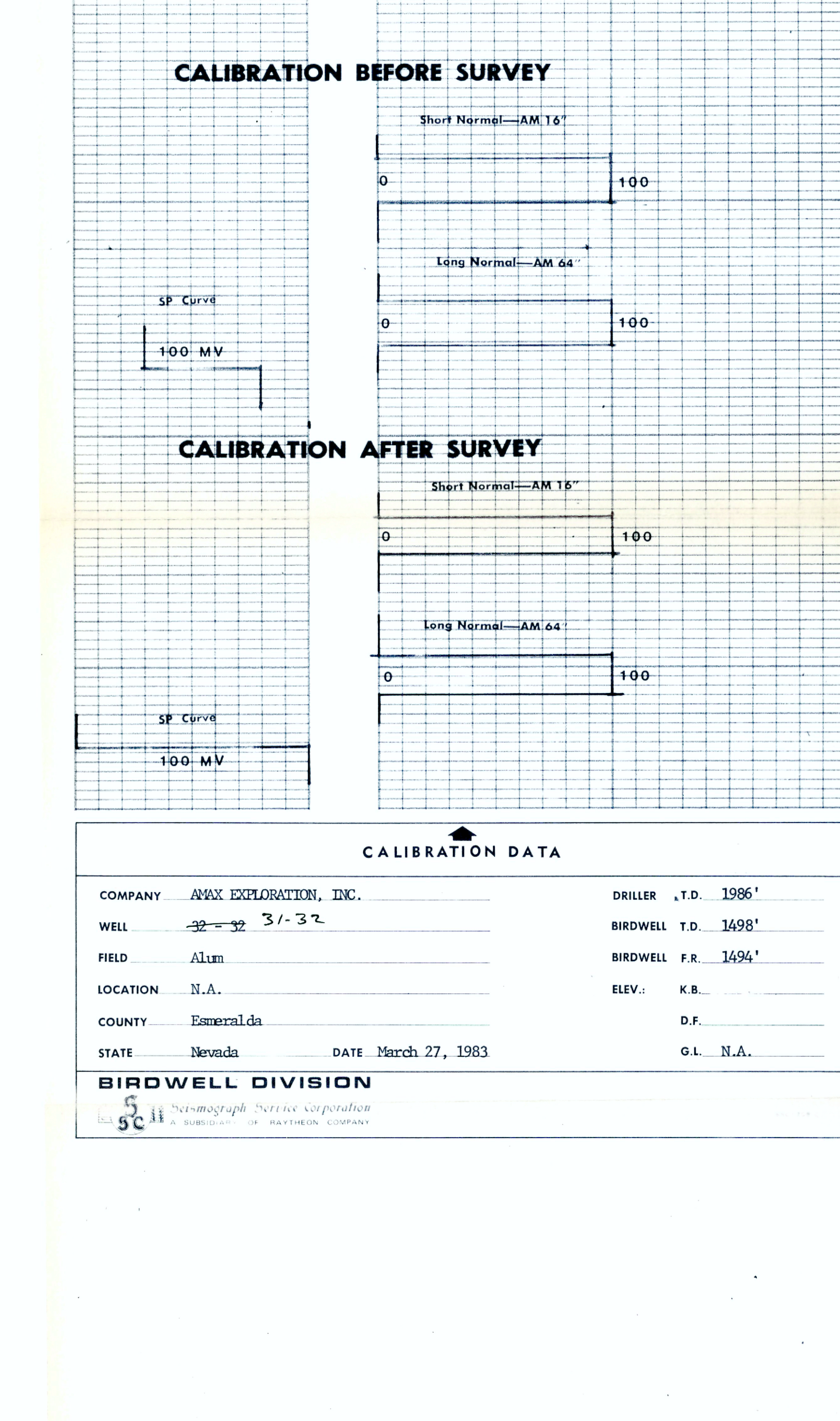
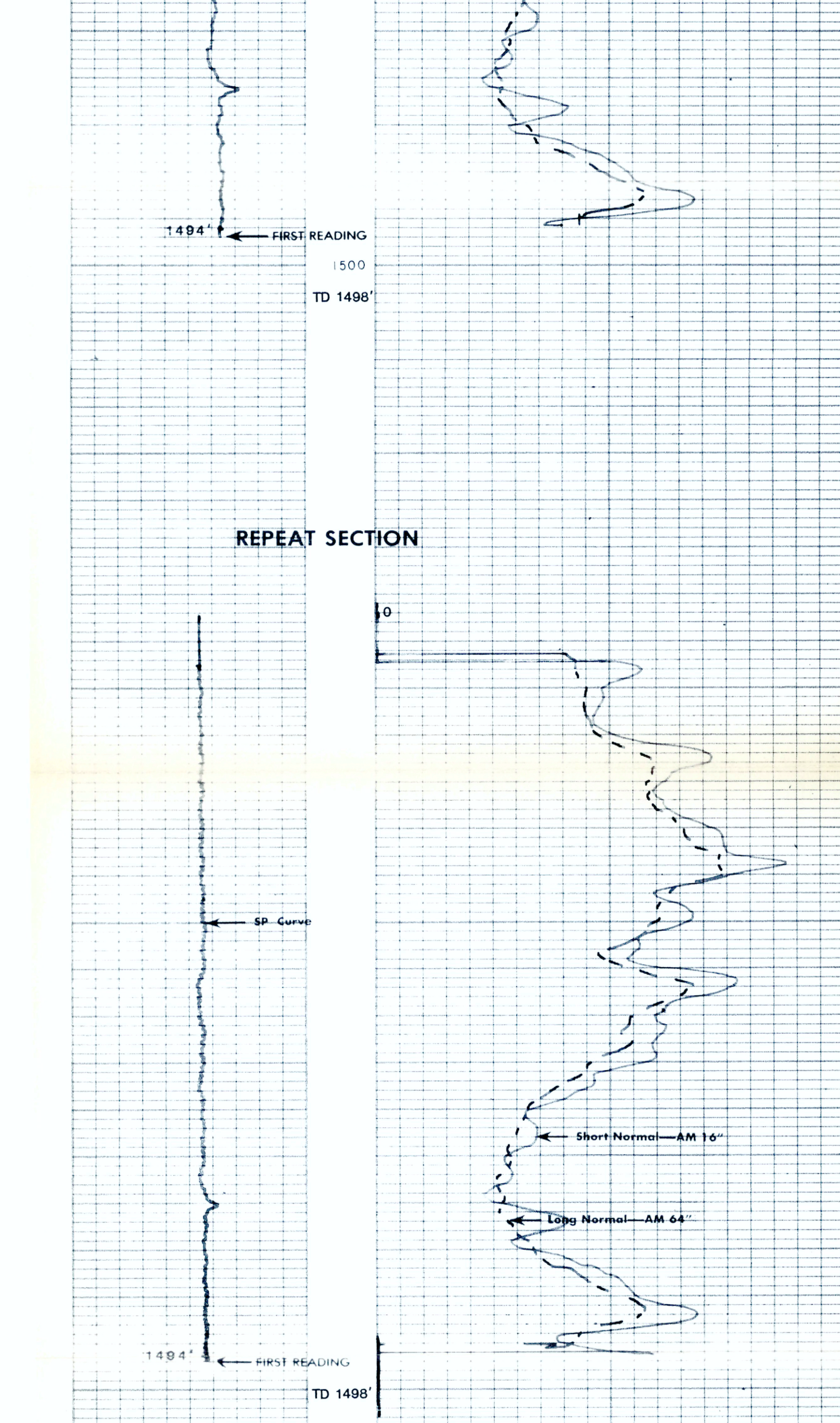
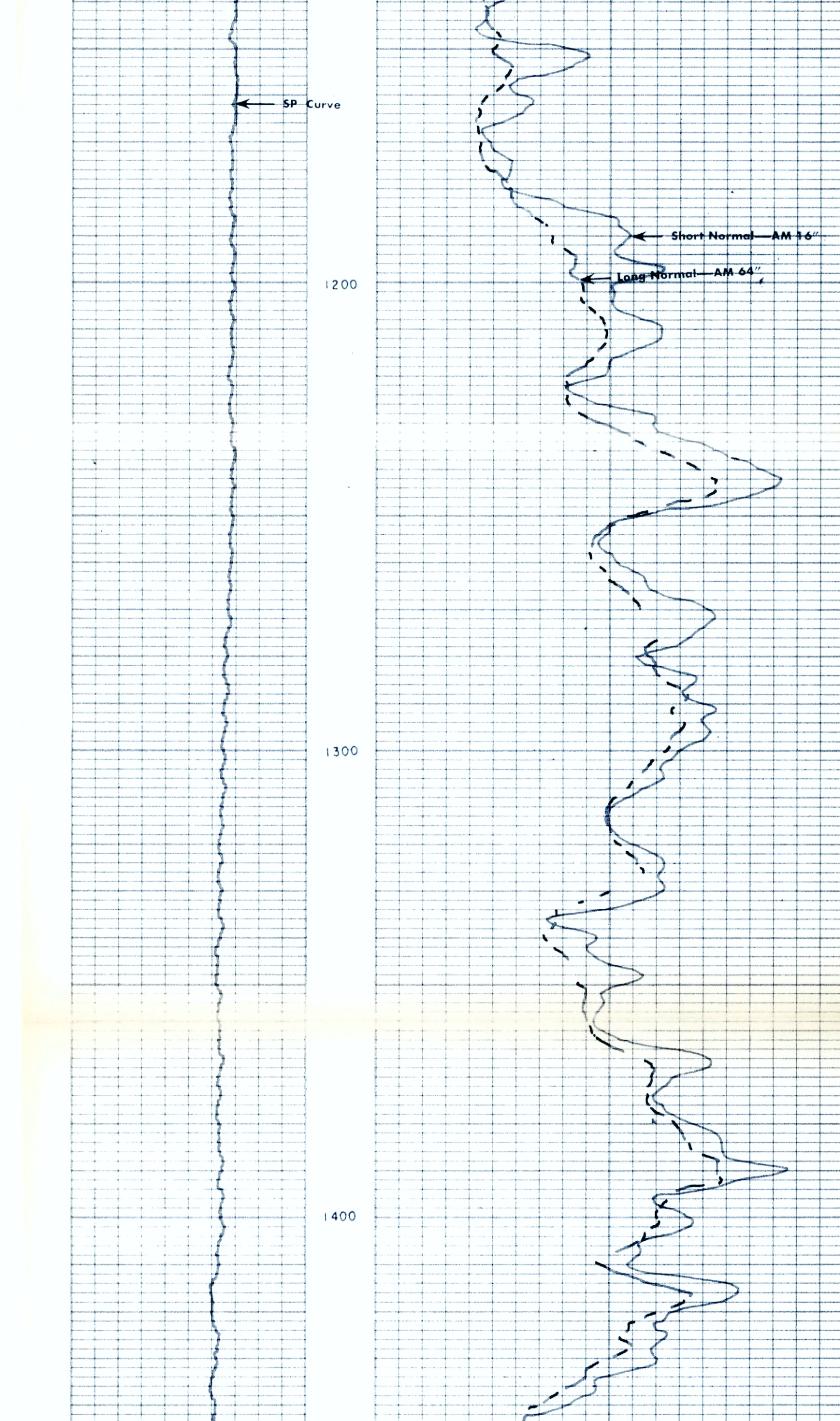
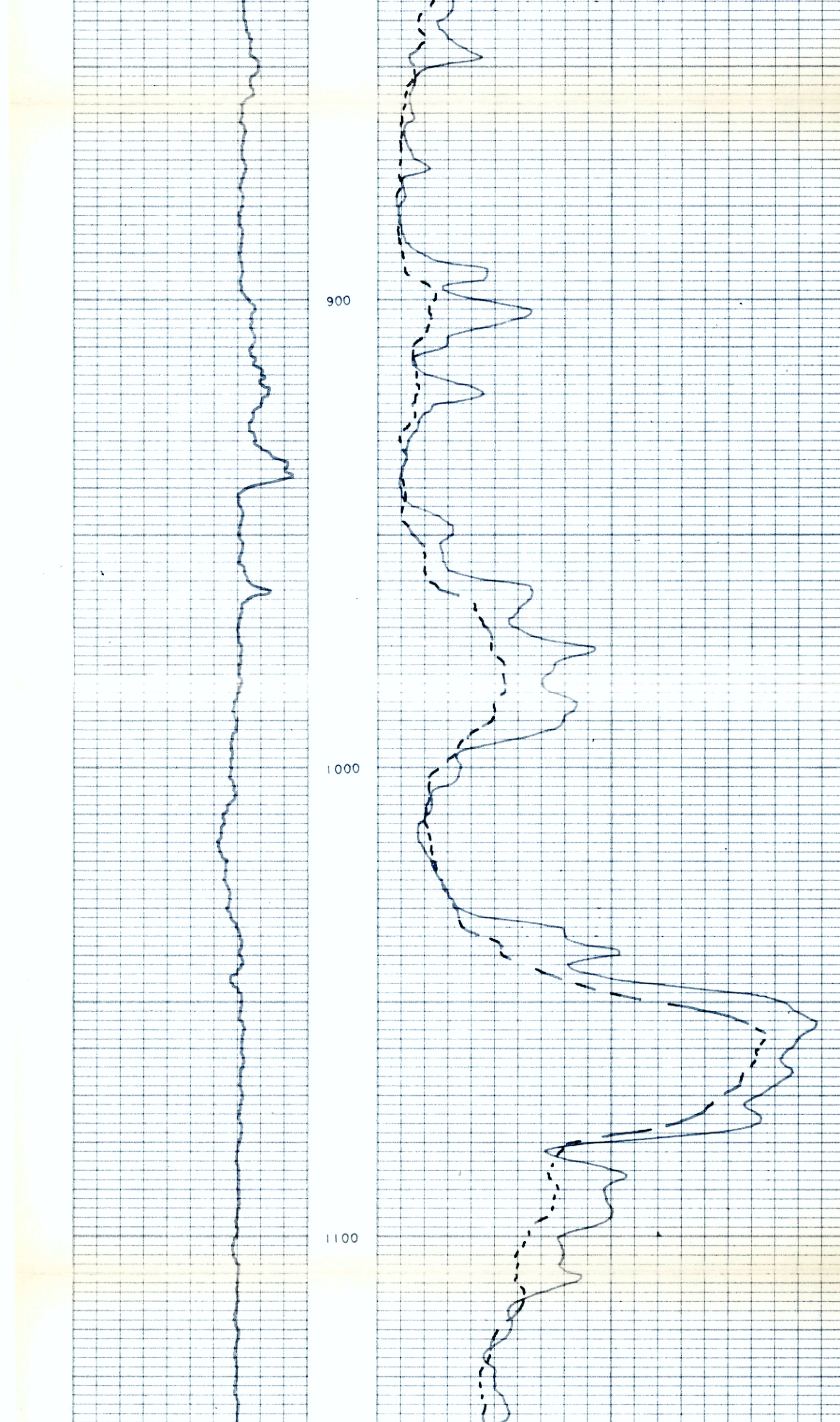
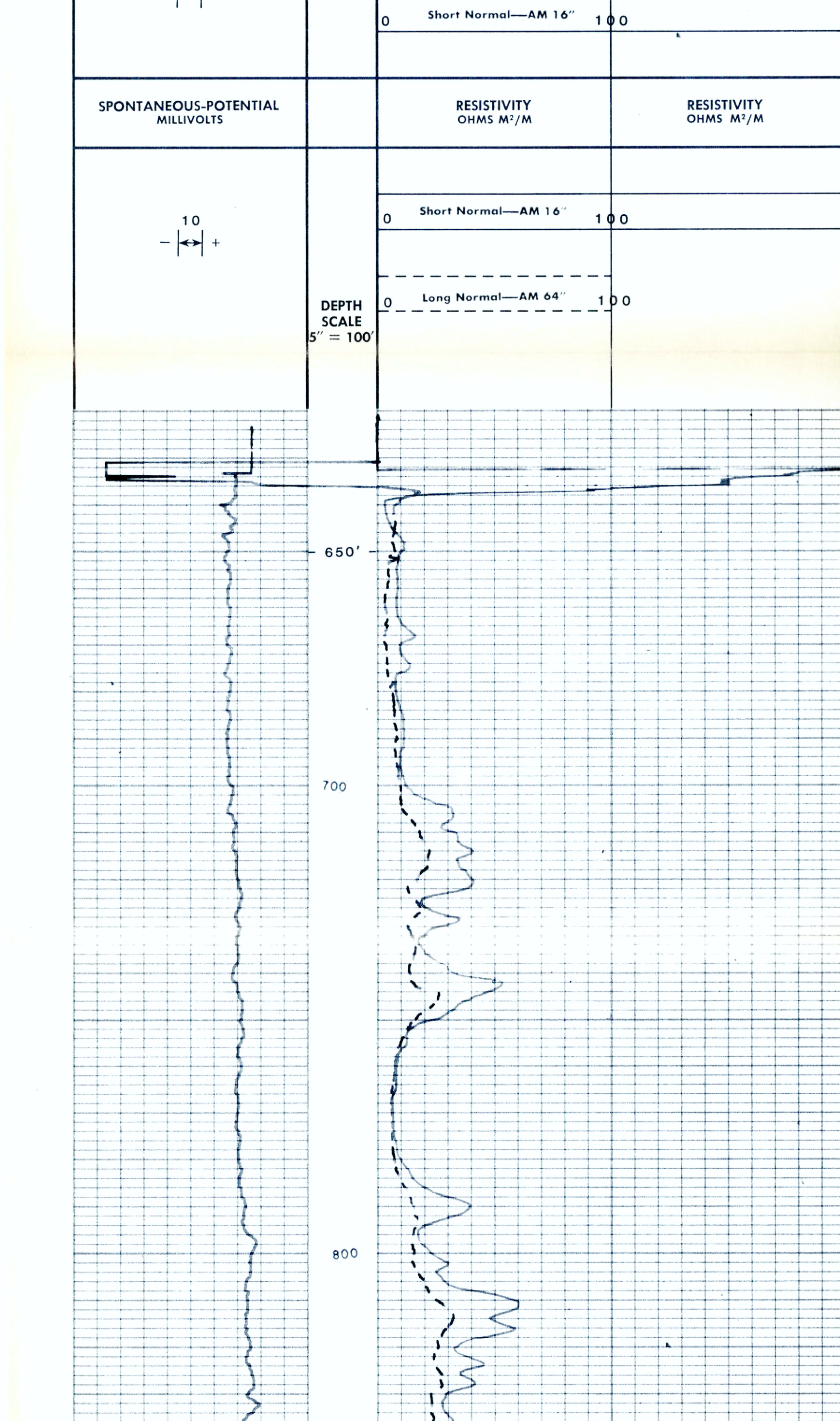
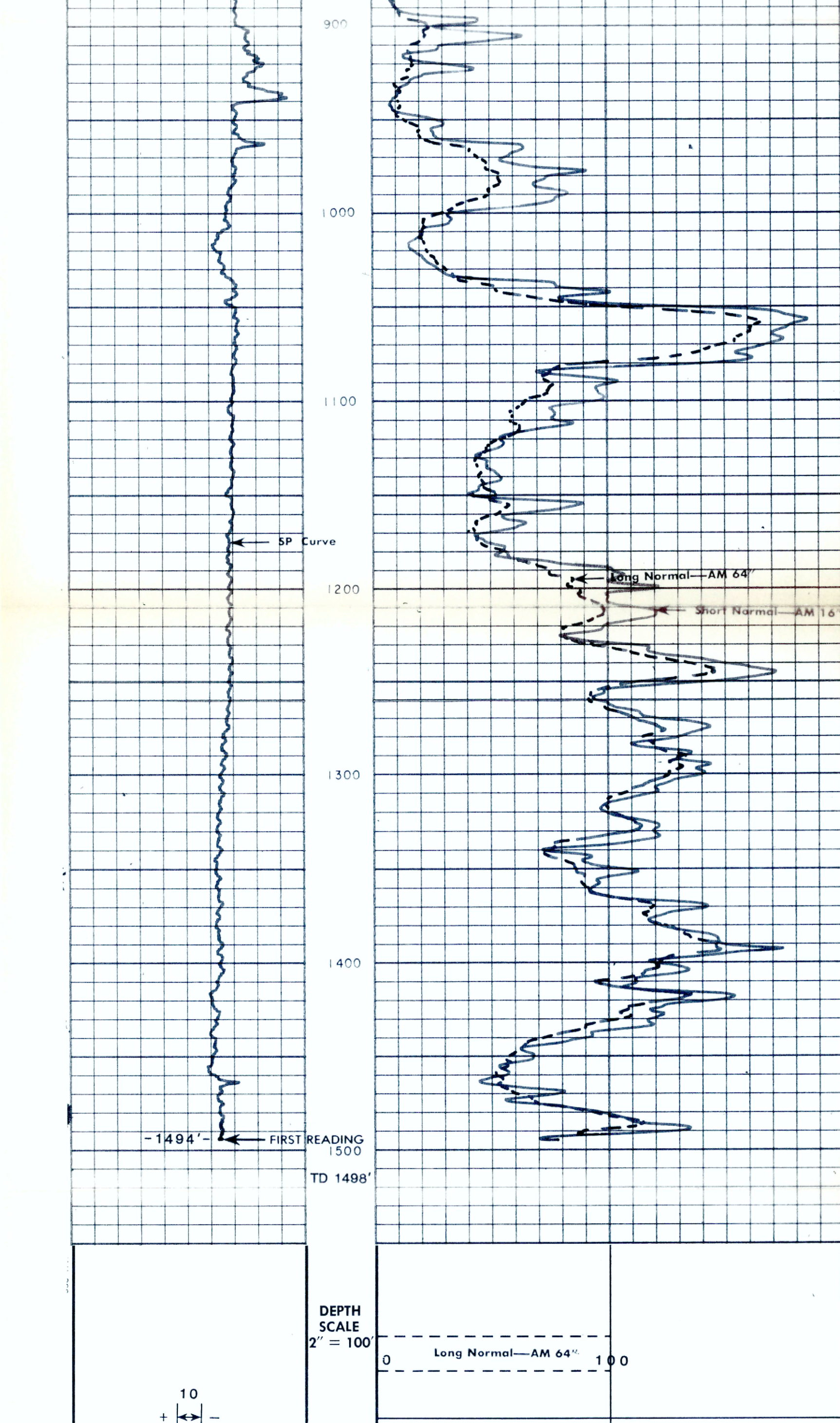
CHANGES IN MUD TYPE OR ADDITIONAL SAMPLES	TYPE LOG	DEPTH	SCALE CHANGES:	SCALE UP HOLE	SCALE DOWN HOLE
DATE SAMPLE NO.					
DEPTH - DRILLER					
LIQUID LEVEL					
DENS. VISC.					
PH FLUID LOSS					
SOURCE OF SAMPLE					
R _{me} @ MEAS. TEMP.					
R _{mf} @ MEAS. TEMP.					
R _{mc} @ MEAS. TEMP.					
R _{me} @ B.H.T.					
R _{mf} @ B.H.T.					
R _{mc} @ B.H.T.					

EQUIPMENT DATA	THICKNESS	DEPTH	SCALE UP HOLE	SCALE DOWN HOLE
RUN NO.	1			
SONDE MODEL NO.	1			
SERIAL NO.	Free			
SONDE DIA.	1-5/8"			
OTHER				

REMARKS: Started job at 1630 hours
Finished job at 1800 hours

NOTE: Some brine water in borehole

N.A. INFORMATION NOT AVAILABLE AT TIME OF SERVICE SERVICE ORDER INVOICE NO. 554872



CALIBRATION DATA	
COMPANY	AMX EXPLORATION, INC.
WELL	31-32
FIELD	Alum
LOCATION	N.A.
COUNTY	Esmeralda
STATE	Nevada
DATE	March 27, 1983
DRILLER	T.D. 1986'
BIRDWELL T.D.	1498'
BIRDWELL F.R.	1496'
ELEV.	K.B.
D.F.	
G.L.	N.A.