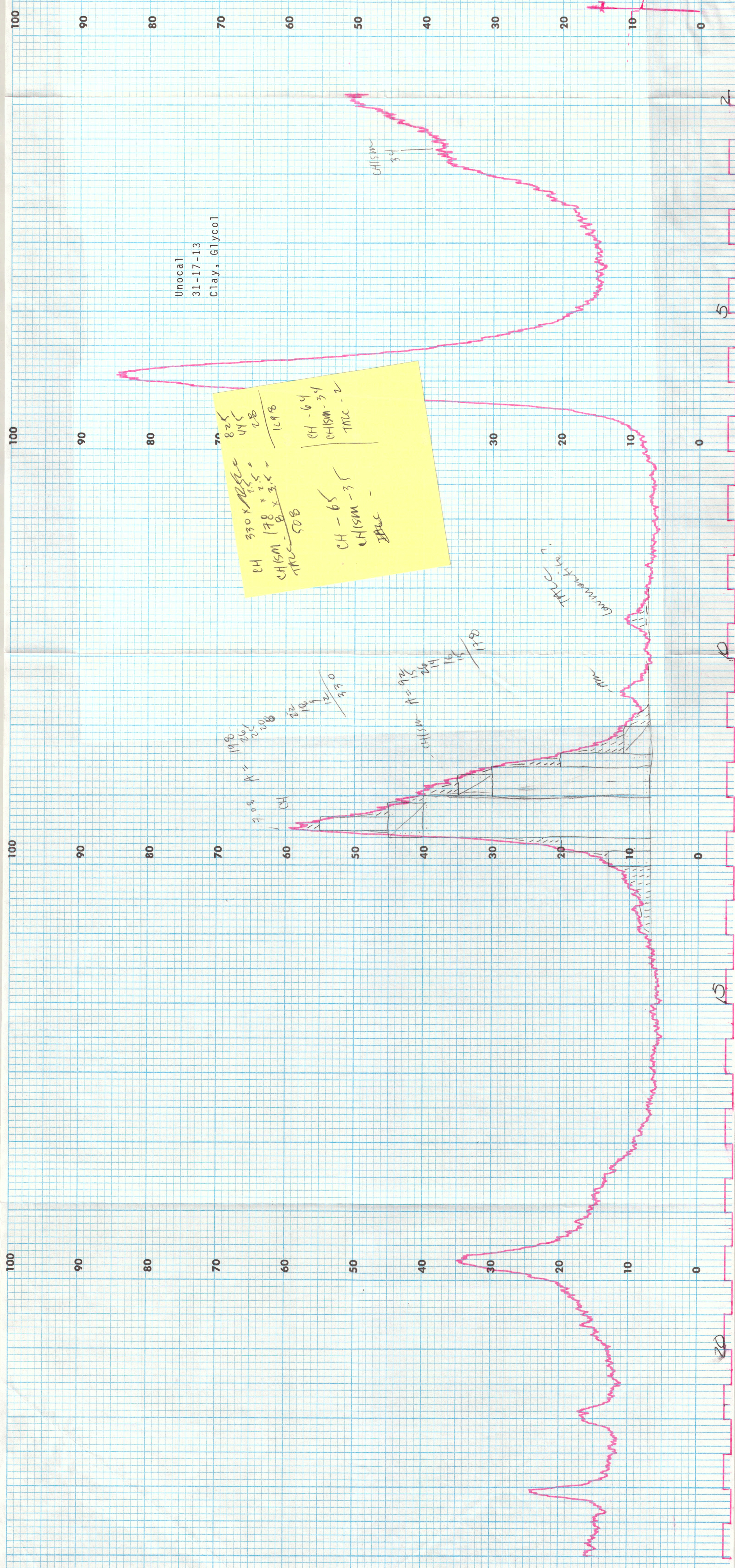


1317-13



Unocal
31-17-13
Clay, Glycol

$$\begin{array}{r} 825 \\ 415 \\ \hline 1298 \end{array}$$

$$\begin{array}{r} 330 \times 2.5 = \\ 178 \times 2.5 = \\ \hline 508 \end{array}$$

$$\begin{array}{r} 178 \times 2.5 = \\ 8 \times 2.5 = \\ \hline 508 \end{array}$$

 CH - 65
 CHISM - 35
 TRAC -

$$\begin{array}{r} 198 \\ 26 \\ \hline 224 \end{array}$$

$$\begin{array}{r} 22 \\ 10 \\ \hline 32 \end{array}$$

$$\begin{array}{r} 22 \\ 10 \\ \hline 32 \end{array}$$

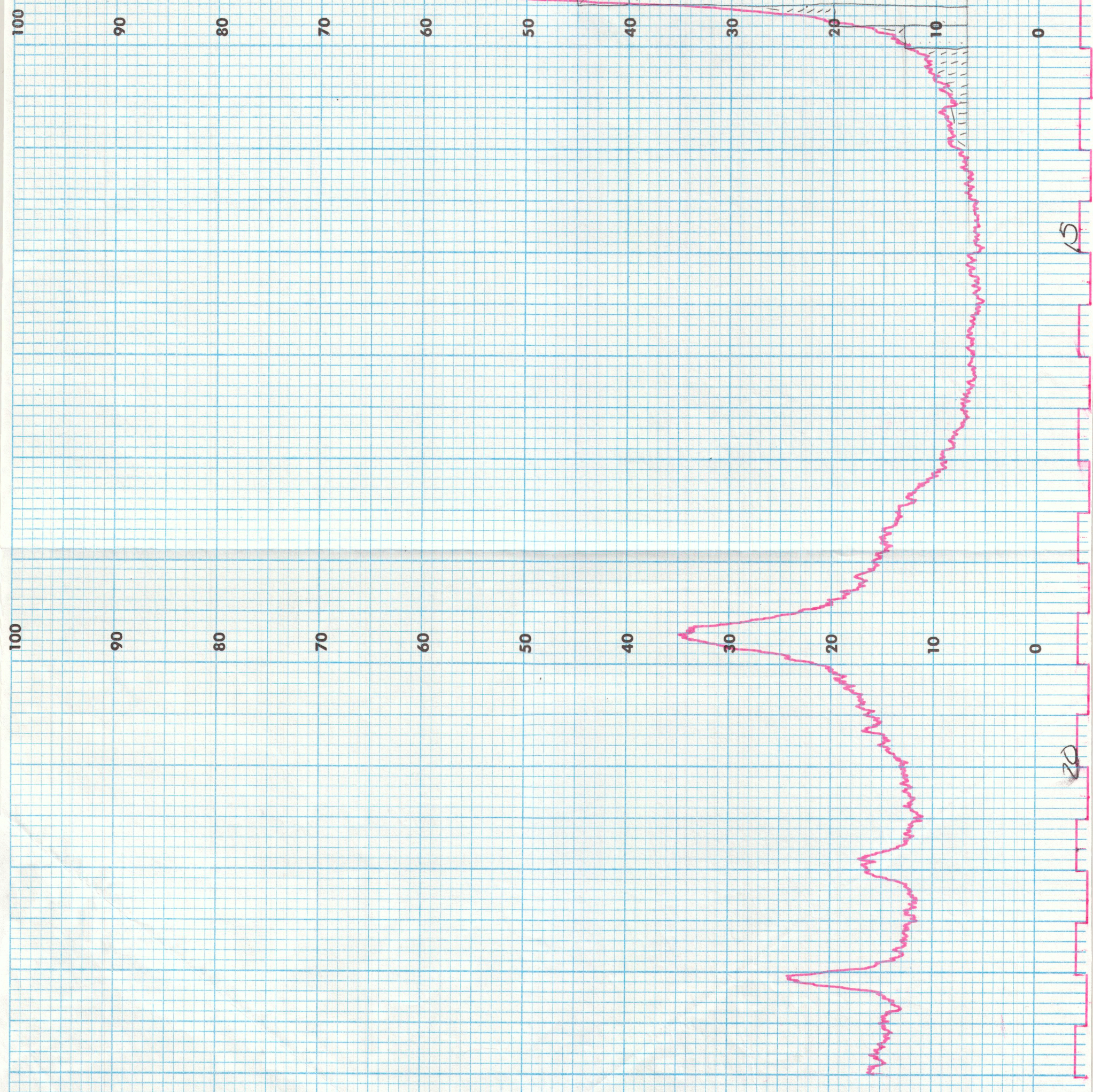
$$\begin{array}{r} 26 \\ 14 \\ 14 \\ \hline 54 \end{array}$$

$$\begin{array}{r} 26 \\ 14 \\ 14 \\ \hline 54 \end{array}$$

$$\begin{array}{r} 26 \\ 14 \\ 14 \\ \hline 54 \end{array}$$

 CHISM A = 92
 CHISM A = 92
 CHISM A = 92

TRAC in
Low water



Unocal
31-17-13
Clay, Glycol

$$\begin{array}{r} 825 \\ 415 \\ \hline 1298 \end{array}$$

$$\begin{array}{r} 330 \times 2.5 = \\ 178 \times 2.5 = \\ \hline 508 \end{array}$$

$$\begin{array}{r} 178 \times 2.5 = \\ 8 \times 2.5 = \\ \hline 508 \end{array}$$

 CH - 65
 CHISM - 35
 TRAC -

$$\begin{array}{r} 198 \\ 26 \\ \hline 224 \end{array}$$

$$\begin{array}{r} 22 \\ 10 \\ \hline 32 \end{array}$$

$$\begin{array}{r} 22 \\ 10 \\ \hline 32 \end{array}$$

$$\begin{array}{r} 26 \\ 14 \\ 14 \\ \hline 54 \end{array}$$

$$\begin{array}{r} 26 \\ 14 \\ 14 \\ \hline 54 \end{array}$$

$$\begin{array}{r} 26 \\ 14 \\ 14 \\ \hline 54 \end{array}$$

 CHISM A = 92
 CHISM A = 92
 CHISM A = 92

TRAC in
Low water