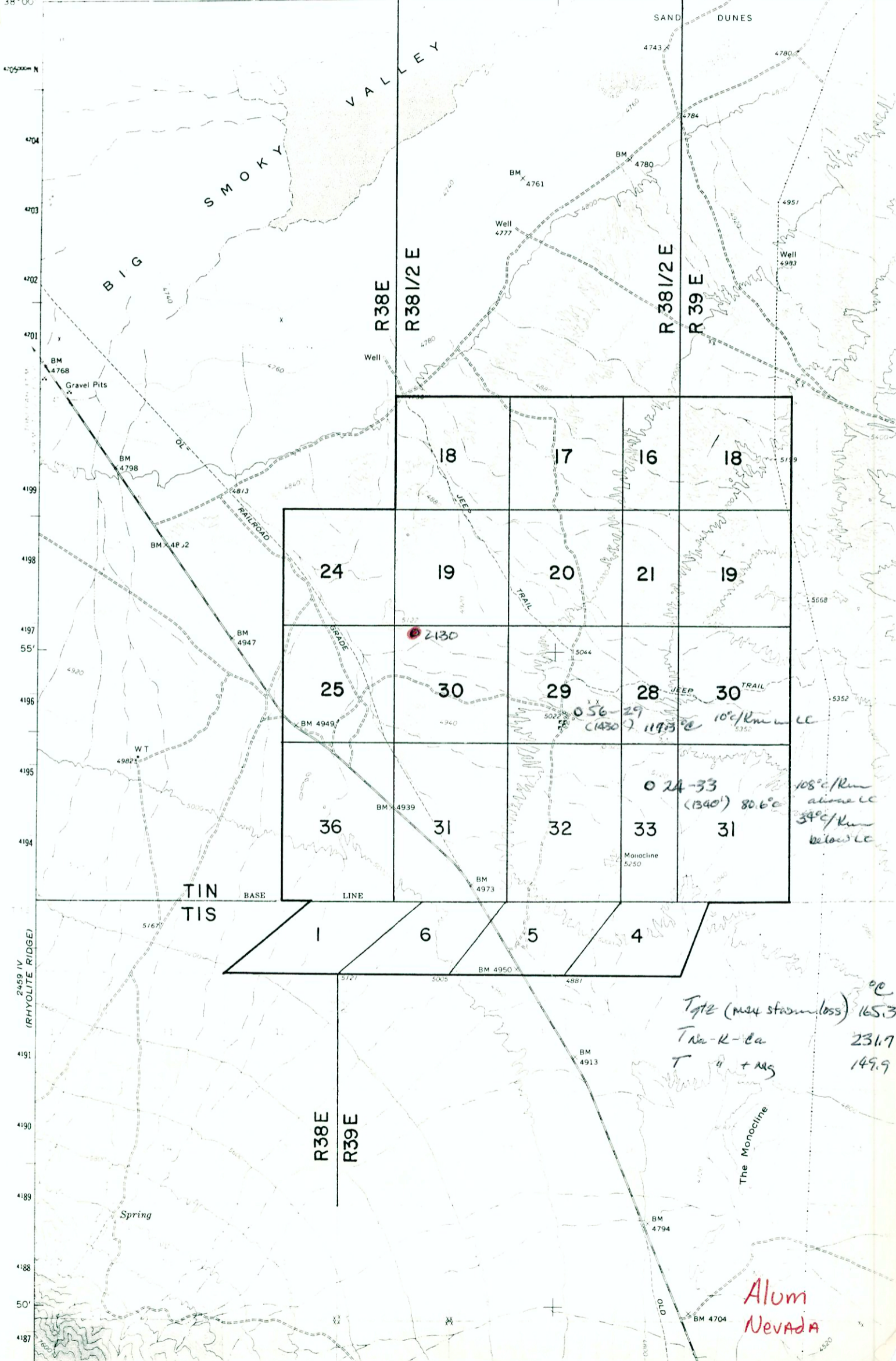


UNITED STATES
DEPARTMENT OF THE INTERIOR
GEOLOGICAL SURVEY

117° 45' 11.11 SE
1:24 000
38° 00' 47.5000 N
435000m E 436 437 438 439 440 441 442 443 444 445 446
2460 II SW (DEVILS GATE 1:24 000) 40'



11 SE
1:24 000

UNITED STATES
DEPARTMENT OF THE INTERIOR
GEOLOGICAL SURVEY

117°45' 435000' E 436 437 438 439 (DEVILS GATE 1:24 000) 40' 42 43 44 45 46
470500' N

