

NOWSCO & WESTERN AIR SEGMENT OF FLOW TEST

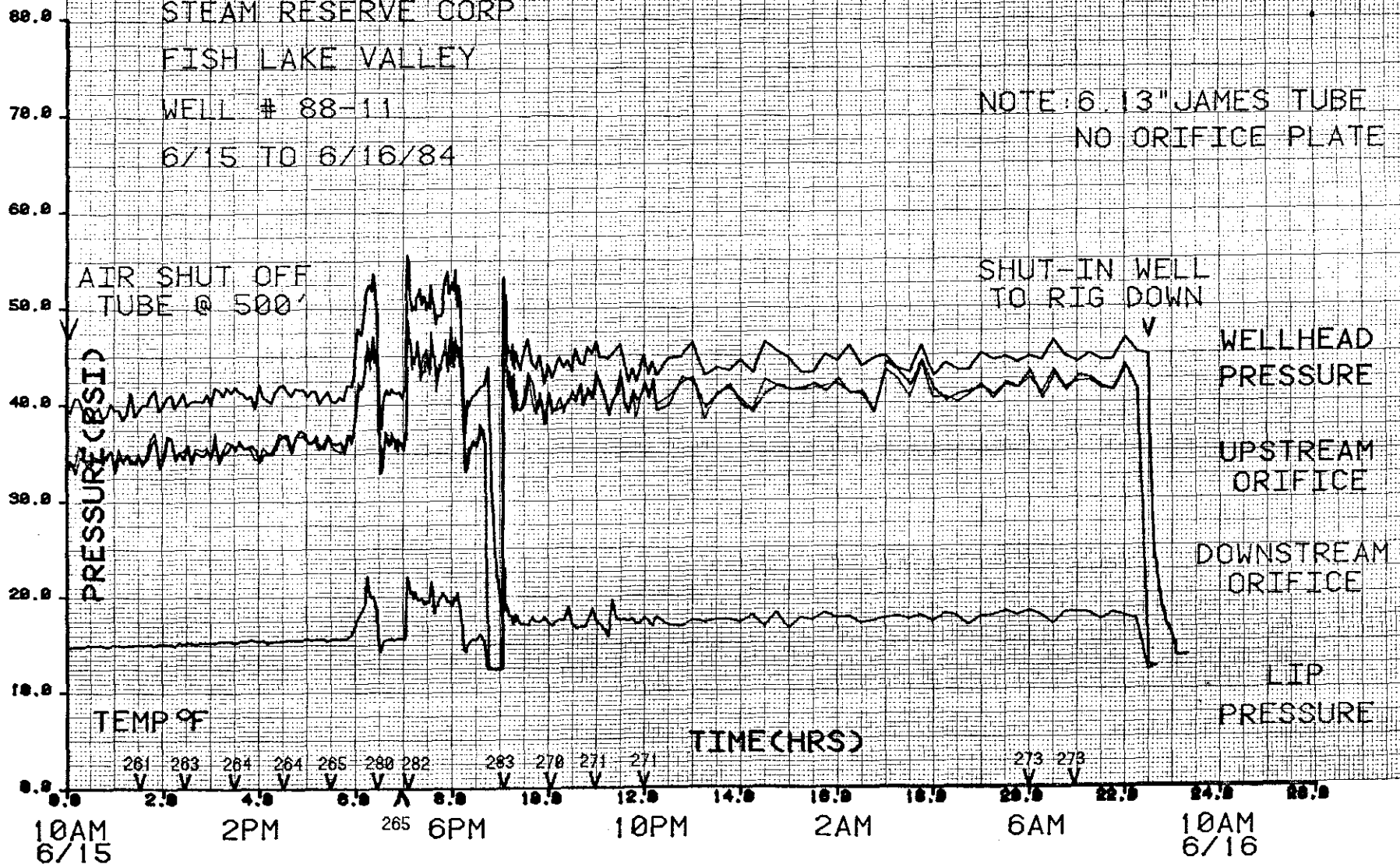
STEAM RESERVE CORP

FISH LAKE VALLEY

WELL # 88-11

6/15 TO 6/16/84

NOTE: 6.13" JAMES TUBE
NO ORIFICE PLATE



BAKERSFIELD, CA
8051 588-2788

10 x 10 1/2" INCH
10 x 14 INCHES