

SCHLUMBERGER

SCHLUMBERGER DIRECTIONAL SURVEY

STEAM RESERVE CORP.

FISH LAKE #86-11-A

FISH LAKE FIELD

ESMERALDA COUNTY, NEVADA

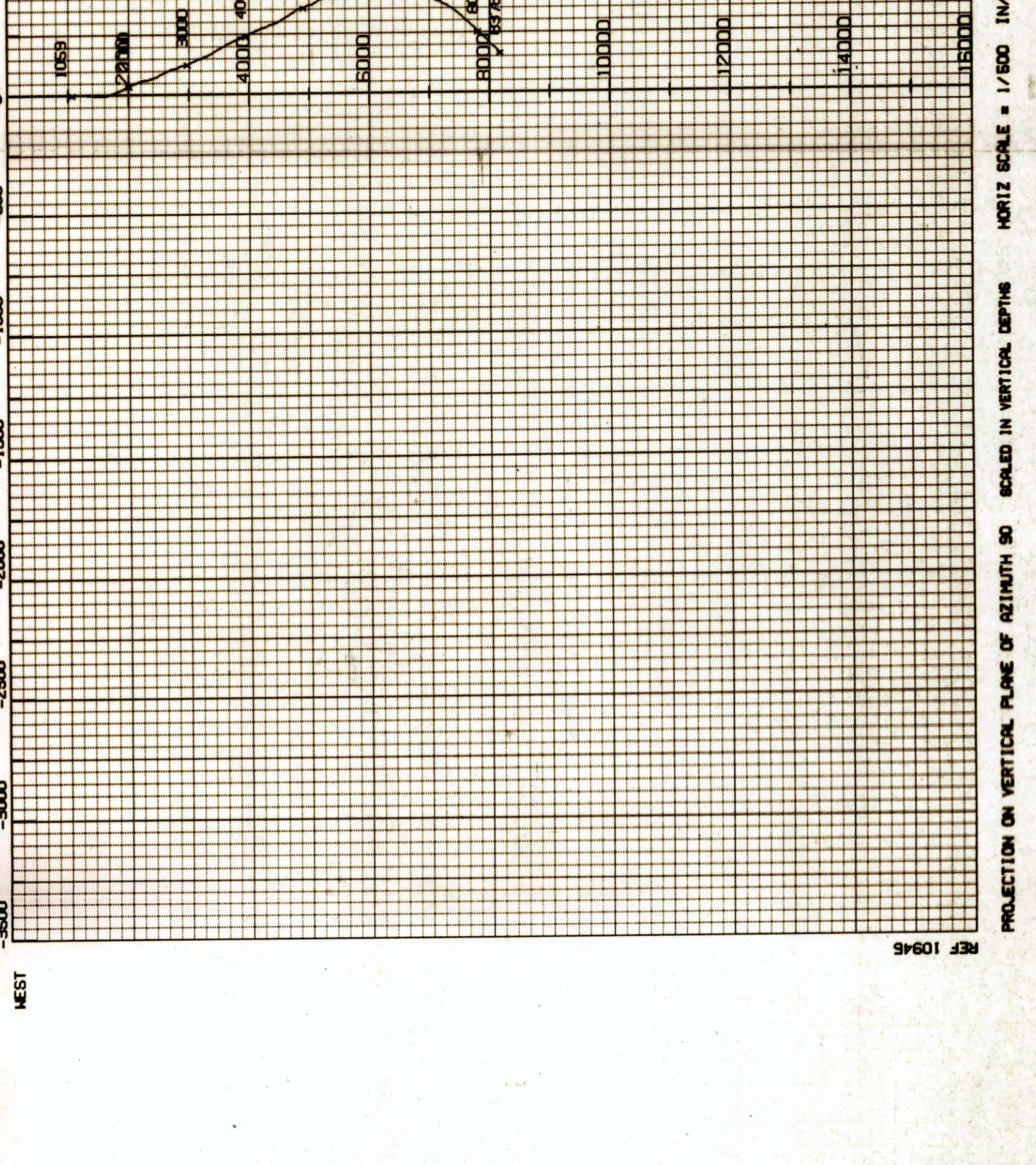
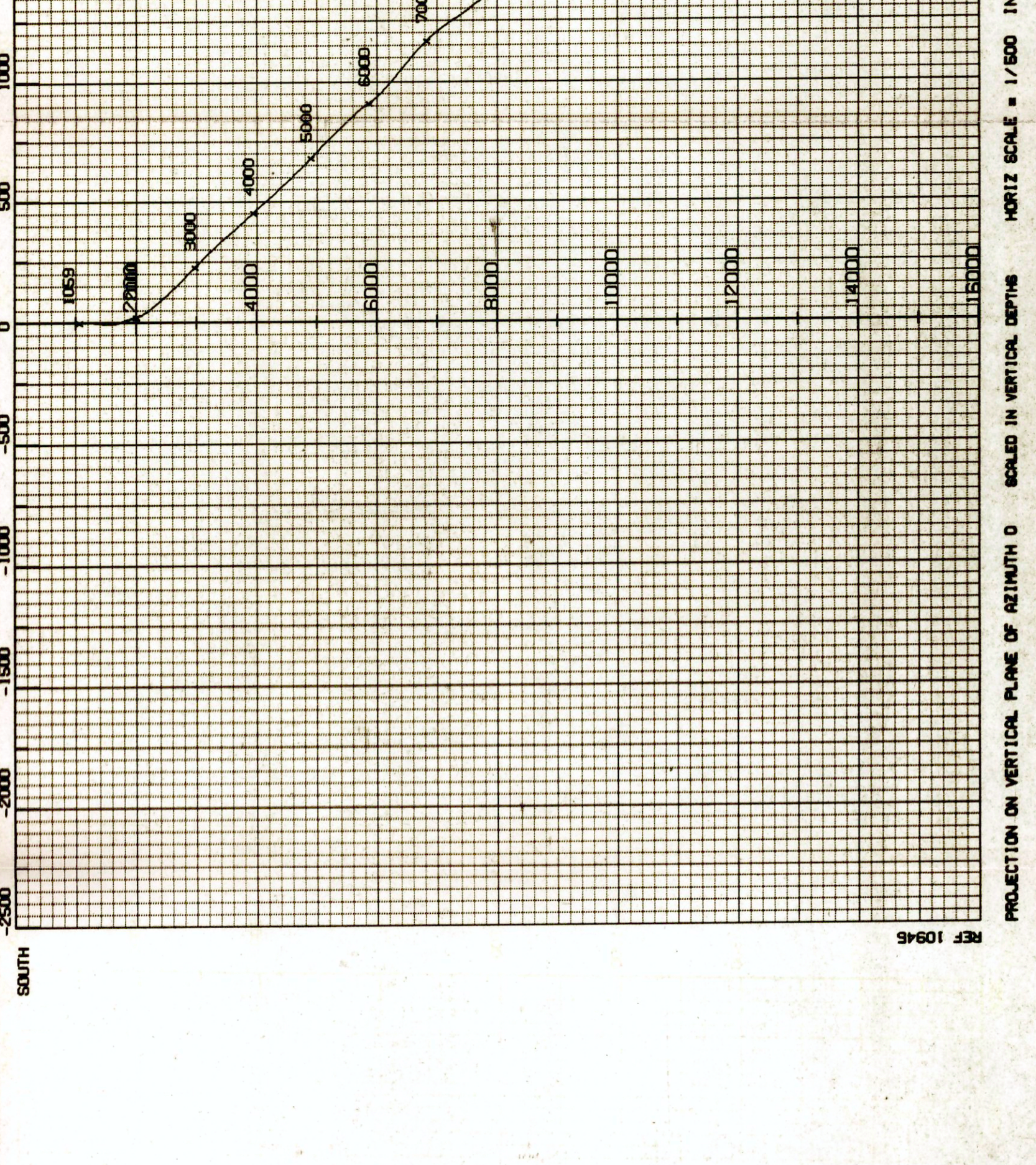
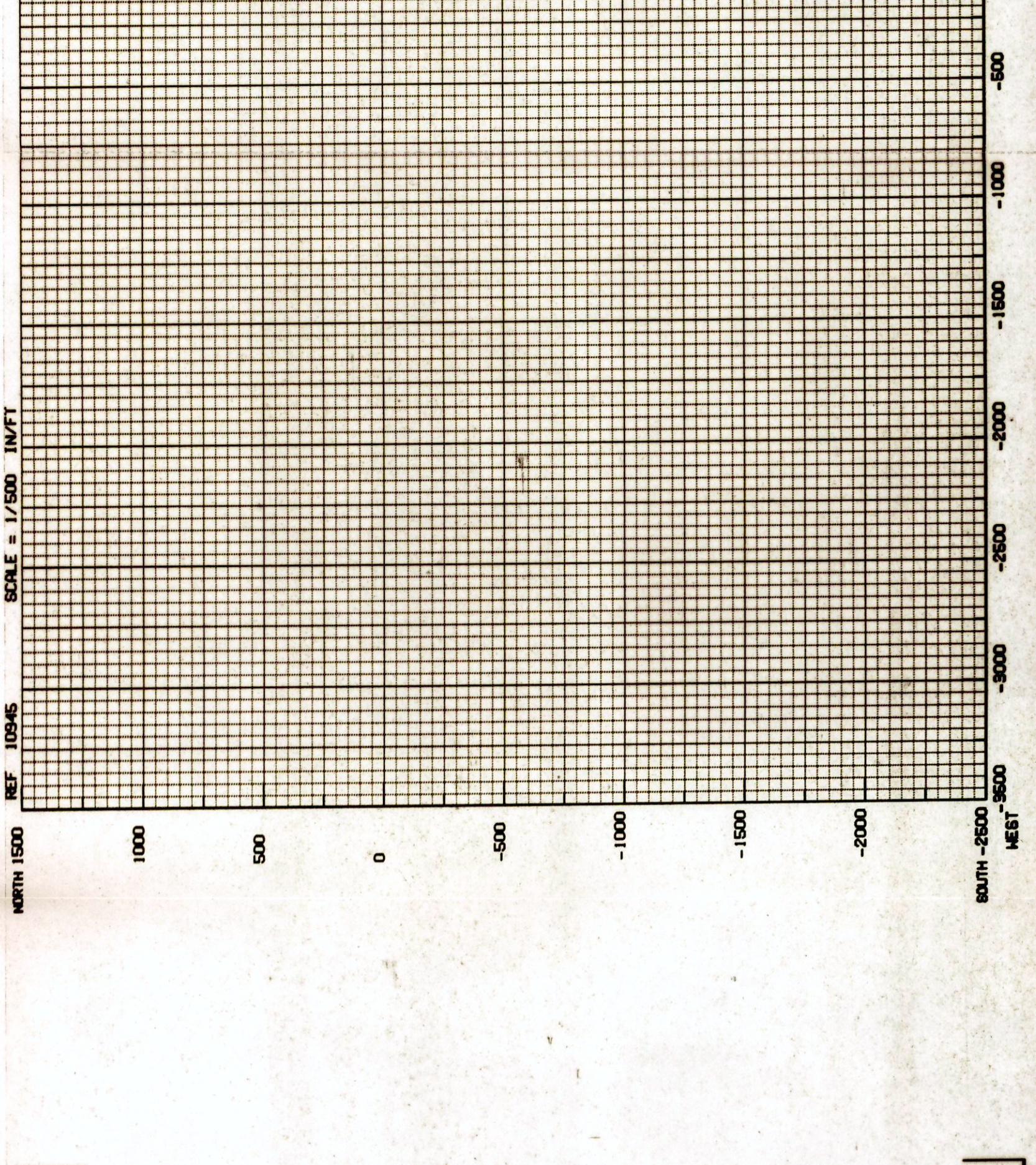
RUN NO. 1 1076 - 8378

JANUARY 5, 1965

START OF SURVEY IS CASING AT 1059 FT.

HISTORICAL RADIUS OF CURVATURE METHOD

JOB REFERENCE 10945



HISTORICAL RADIUS OF CURVATURE METHOD

BOTTOM HOLE LOCATION

COURSE LENGTH 1424.1 FT

COURSE AZIMUTH 6.7 DEG

MEASURED DEPTH 8378.0 FT

TRUE VERTICAL DEPTH 8165.3 FT

DISTANCE NORTH 1414.4 FT

DISTANCE EAST 165.6 FT

REF 10945