

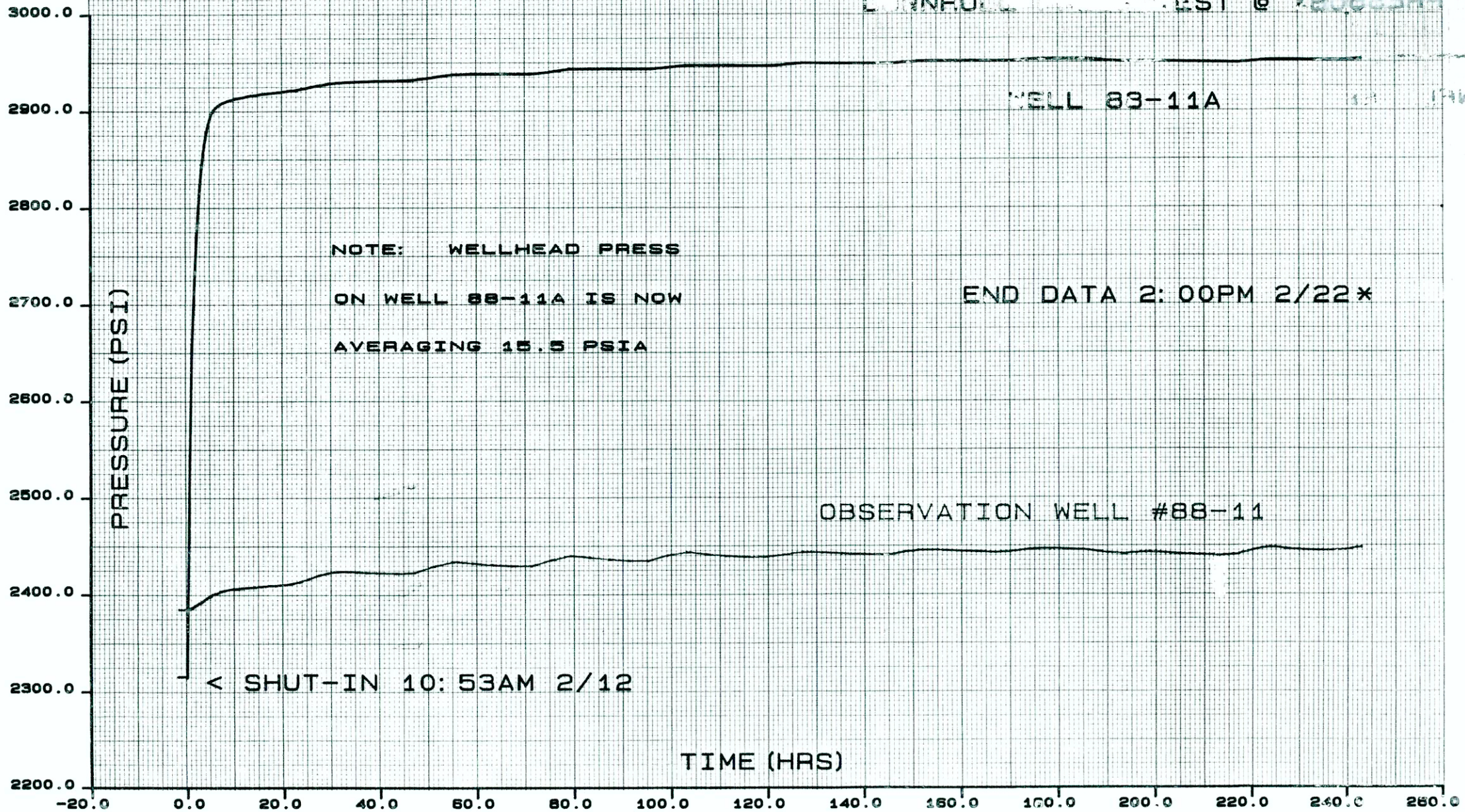
S R C FISHLAKE VALLEY

CONHOL TEST @ 780833AA



BAKERFIELD, CA
1905
1/27/68

10 x 10 to 1/2 INCH
10 x 14 INCHES



NOTE: WELLHEAD PRESS
ON WELL 88-11A IS NOW
AVERAGING 15.5 PSIA

END DATA 2:00PM 2/22*

OBSERVATION WELL #88-11

< SHUT-IN 10:53AM 2/12

PRESSURE (PSI)

TIME (HRS)