

Schlumberger

DUAL INDUCTION SFL 2"

CSU Field Log

COMPANY: STEAM RESERVE CORPORATION
WELL: FISH LAKE #88-11

FIELD: HILDCAT
COUNTY: ESMERALDA
STATE: NEVADA
NATION: USA
LOCATION: S180°E & S100°S OF NM CDR

PERM: 11
SEC: 11
TWP: 1S
RGE: 3SE

PERMANENT DATUM: GL
ELEV. OF PERM. DATUM: 5120.0 F
ELEVATIONS-
LOG MEASURED FROM: KB
KB: 5120.0 F
DLG. MEASURED FROM: KB
GL: 5120.0 F

DATE: 22 MAY 84
RUN NO: 2

DEPTH-DRILLER: 8100.0 F
DEPTH-LOGGER: 7916.0 F
BIT LOG INTERVAL: 7910.0 F
TOP LOG INTERVAL: 6138.0 F
CASING-DRILLER: 1047 F
CASING-LOGGER: 1049 F
CASING: 13 3/8"
BIT SIZE: 12 1/4"
BIT DEPTH: 17200 F

OTHER SERVICES-
FDC/CNL/GR

PROGRAM
TAP: 2
SERV: 2
ORDER NO:
383330

TYPE FLUID IN HOLE: GEL-WATER
DENSITY: 8.8 LB/G
VISCOSITY: 41.0 S
PH: 8.8
FLUID LOSS: 18.6 C3
SOURCE OF SAMPLE: FLOWLINE
RM: 1.430 DHMM AT 104. DEGF
RMF: 3.350 DHMM AT 64.0 DEGF
RMC: 1.870 DHMM AT 70.0 DEGF
SOURCE RMF/RMC: MEASURED/MEASURED
RM AT BHT: .513 DHMM AT 302. DEGF
RMF AT BHT: .769 DHMM AT 302. DEGF
RMC AT BHT: .465 DHMM AT 302. DEGF
TIME CIRC. STOPPED: 1920 5/21
TIME LOGGER ON BTM.: 2359 5/21/8
MAX. REC. TEMP: 302.0 DEGF
LOGGING UNIT NO: 8126
LOGGING UNIT LOC: SACRAMENTO
RECORDED BY: ANDERSEN
WITNESSED BY: DEYMONAZ PILKINGTON

REMARKS:
LOGGED FROM 7900 AT CLIENTS REQUEST.
MRT#1 302 MRT #2 300 MRT #3 302

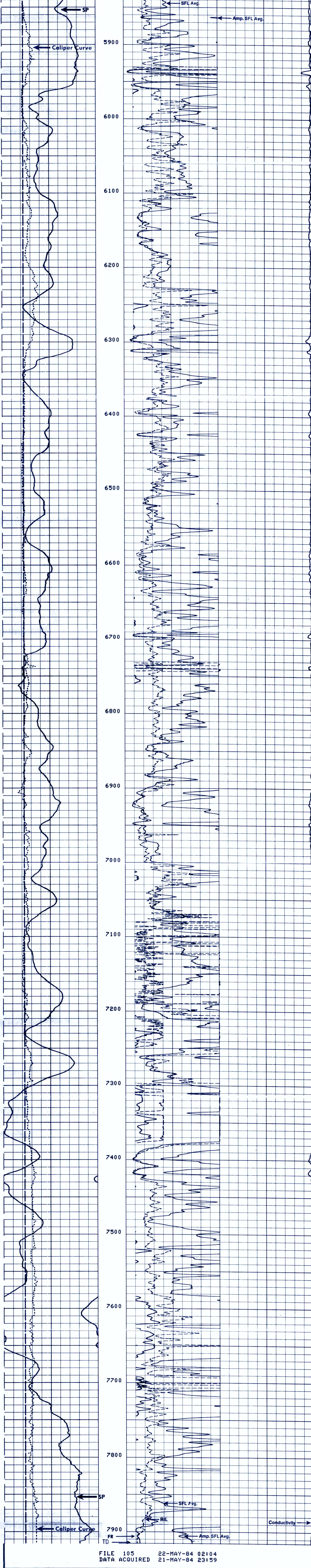
EQUIPMENT NUMBERS-
IEM 685 NLH 418 CNC 2687 PGS 675
PDH 1244 IS 1342 IC 1359

ALL INTERPRETATIONS ARE OPINIONS BASED ON INFERENCES FROM ELECTRICAL OR OTHER MEASUREMENTS AND WE CANNOT, AND DO NOT GUARANTEE THE ACCURACY OR CORRECTNESS OF ANY INTERPRETATIONS, AND WE SHALL NOT, EXCEPT IN THE CASE OF GROSS OR WILLFUL NEGLIGENCE ON OUR PART, BE LIABLE OR RESPONSIBLE FOR ANY LOSS, COSTS, DAMAGES OR EXPENSES INCURRED OR SUSTAINED BY ANYONE RESULTING FROM ANY INTERPRETATION MADE BY ANY OF OUR OFFICERS, AGENTS OR EMPLOYEES. THESE INTERPRETATIONS ARE ALSO SUBJECT TO OUR GENERAL TERMS AND CONDITIONS AS SET OUT IN OUR CURRENT PRICE SCHEDULE.

FILE 16 22-MAY-84 02:43
DATA ACQUIRED 00 - -00 00:00

BS (IN)	ILD (DHMM)		
10.000 20.000	0.0 500.00		
CALI (IN)	SFLA (DHMM)		
10.000 20.000	0.0 100.00		
SP (MV)	SFLA (DHMM)	CILD (MMHD)	
-100.0 0.0	0.0 500.00	500.00	0.0

FILE 105 22-MAY-84 02:10
DATA ACQUIRED 22-MAY-84 01:12



FILE 105 22-MAY-84 02:04
DATA ACQUIRED 21-MAY-84 23:59

BS (IN)	ILD (DHMM)		
10.000 20.000	0.0 500.00		
CALI (IN)	SFLA (DHMM)		
10.000 20.000	0.0 100.00		
SP (MV)	SFLA (DHMM)	CILD (MMHD)	
-100.0 0.0	0.0 500.00	500.00	0.0

SENSOR MEASURE POINT TO TOOL ZERO

NCNL 46.9 FEET	GR 55.4 FEET
FFDC 31.5 FEET	FNCL 46.9 FEET
CALI 31.5 FEET	NFDC 31.5 FEET
SFL 6.4 FEET	ILD 9.4 FEET
SP 2.5 FEET	ILM 5.7 FEET
TENS 2.5 FEET	SPAR 2.5 FEET
NRAT 46.9 FEET	

PARAMETERS

NAME	VALUE	UNIT	NAME	VALUE	UNIT
HC CALI	1.00000	G/C3	PSNR	2.20600	
FD	4.80000		MATR SAND	2.65000	G/C3
FFDC	4.80000	MMHD	MEN WATE	1.00000	DHMM
DSEC	7.20000	IN	SBR	0.0	F
MSEC	12.25000		BHS		
BS	0.100000		DD		
SPDR	0.100000				
PP	RECD				