

PRUETT INDUSTRIES INC
8915 ROSEDALE HWY, BAKERSFIELD, CA. 93308
(805) 589-2768

SUB-SURFACE TEMPERATURE SURVEY

CO. STEAM RESERVE CORP.	RUN 04 FIELD FISHLAKE VALLEY WELL 88-11
EFF DEPTH 8147'	WELL STAT STATIC TOOL HUNG
CASING 13 5/8 @ -803'	CASING PRESS ON BOTTOM 1:50AM6/22
LINER 9 5/8" @ -6583'	TUBING PRESS OFF BOTTOM 2:22AM6/22
DATE 062184	ELEMENT RANGE 72 - 540 ZERO POINT 31'
ELEVATION	ZONE SHUT-IN
MAX TEMP	PICK-UP ON-PROD
PERF -8140'	CAL SER NO. 113 MPP
TUBING -	
UNITS ENGLISH	PURPOSE TEMPERATURE TRAVERSE 821784

6/21-22/84

SURVEY DATA

CO. STEAM RESERVE CORP.				RUN 04 FIELD FISHLAKE VALLEY WELL 88-11			
TIME	DEPTH	P/T	GRAD	TIME	DEPTH	P/T	GRAD
11:30	700	344.5	0.000	12:00	1300	348.1	0.000
11:31	720	344.8	0.000	12:01	1320	348.1	0.000
11:32	740	344.8	0.000	12:02	1340	348.3	0.000
11:33	760	344.8	0.000	12:03	1360	348.3	0.000
11:34	780	344.8	0.000	12:04	1380	348.3	0.000
11:35	800	344.8	0.000	12:05	1400	348.3	0.000
11:36	820	344.3	0.000	12:06	1420	348.3	0.000
11:37	840	344.3	0.000	12:07	1440	348.3	0.000
11:38	860	344.3	0.000	12:08	1460	348.3	0.000
11:39	880	344.5	0.000	12:09	1480	348.3	0.000
11:40	900	344.8	0.000	12:10	1500	348.3	0.000
11:41	920	344.8	0.000	12:11	1520	348.3	0.000
11:42	940	345.0	0.000	12:12	1540	348.5	0.000
11:43	960	345.0	0.000	12:13	1560	348.7	0.000
11:44	980	345.0	0.000	12:14	1580	348.7	0.000
11:45	1000	345.0	0.000	12:15	1600	348.7	0.000
11:46	1020	345.0	0.000	12:16	1620	348.7	0.000
11:47	1040	345.0	0.000	12:17	1640	348.5	0.000
11:48	1060	345.0	0.000	12:18	1660	348.3	0.000
11:49	1080	344.8	0.000	12:19	1680	347.4	0.000
11:50	1100	344.8	0.000	12:35	1700	346.1	0.000
11:51	1120	344.8	0.000	12:44	3000	349.8	0.000
11:52	1140	344.8	0.000	12:52	4000	353.4	0.000
11:53	1160	344.8	0.000	1:01	5000	354.7	0.000
11:54	1180	345.0	0.000	1:10	6000	356.5	0.000
11:55	1200	345.2	0.000	1:11	6050	356.7	0.000
11:56	1220	345.6	0.000	1:12	6100	357.0	0.000
11:57	1240	346.1	0.000	1:13	6150	357.2	0.000
11:58	1260	347.0	0.000	1:14	6200	357.4	0.000
11:59	1280	347.4	0.000	1:15	6250	357.6	0.000

SURVEY DATA

CO. STEAM RESERVE CORP.				RUN 04 FIELD FISHLAKE VALLEY WELL 88-11			
TIME	DEPTH	P/T	GRAD	TIME	DEPTH	P/T	GRAD
1:16	6300	357.6	0.000	1:34	7200	360.4	0.000
1:17	6350	357.9	0.000	1:35	7250	360.6	0.000
1:18	6400	357.9	0.000	1:36	7300	360.8	0.000
1:19	6450	358.1	0.000	1:37	7350	361.0	0.000
1:20	6500	358.1	0.000	1:38	7400	361.2	0.000
1:21	6550	358.3	0.000	1:39	7450	361.5	0.000
1:22	6600	358.5	0.000	1:40	7500	361.7	0.000
1:23	6650	358.8	0.000	1:41	7550	361.9	0.000
1:24	6700	359.0	0.000	1:42	7600	362.2	0.000
1:25	6750	359.2	0.000	1:43	7650	362.4	0.000
1:26	6800	359.2	0.000	1:44	7700	362.6	0.000
1:27	6850	359.2	0.000	1:45	7750	362.8	0.000
1:28	6900	359.5	0.000	1:46	7800	362.8	0.000
1:29	6950	359.5	0.000	1:47	7850	362.8	0.000
1:30	7000	359.5	0.000	1:48	7900	363.1	0.000
1:31	7050	359.7	0.000	1:49	7950	363.5	0.000
1:32	7100	359.9	0.000	2:22	8000	364.4	0.000
1:33	7150	360.1	0.000	0:00	0	0.0	0.000

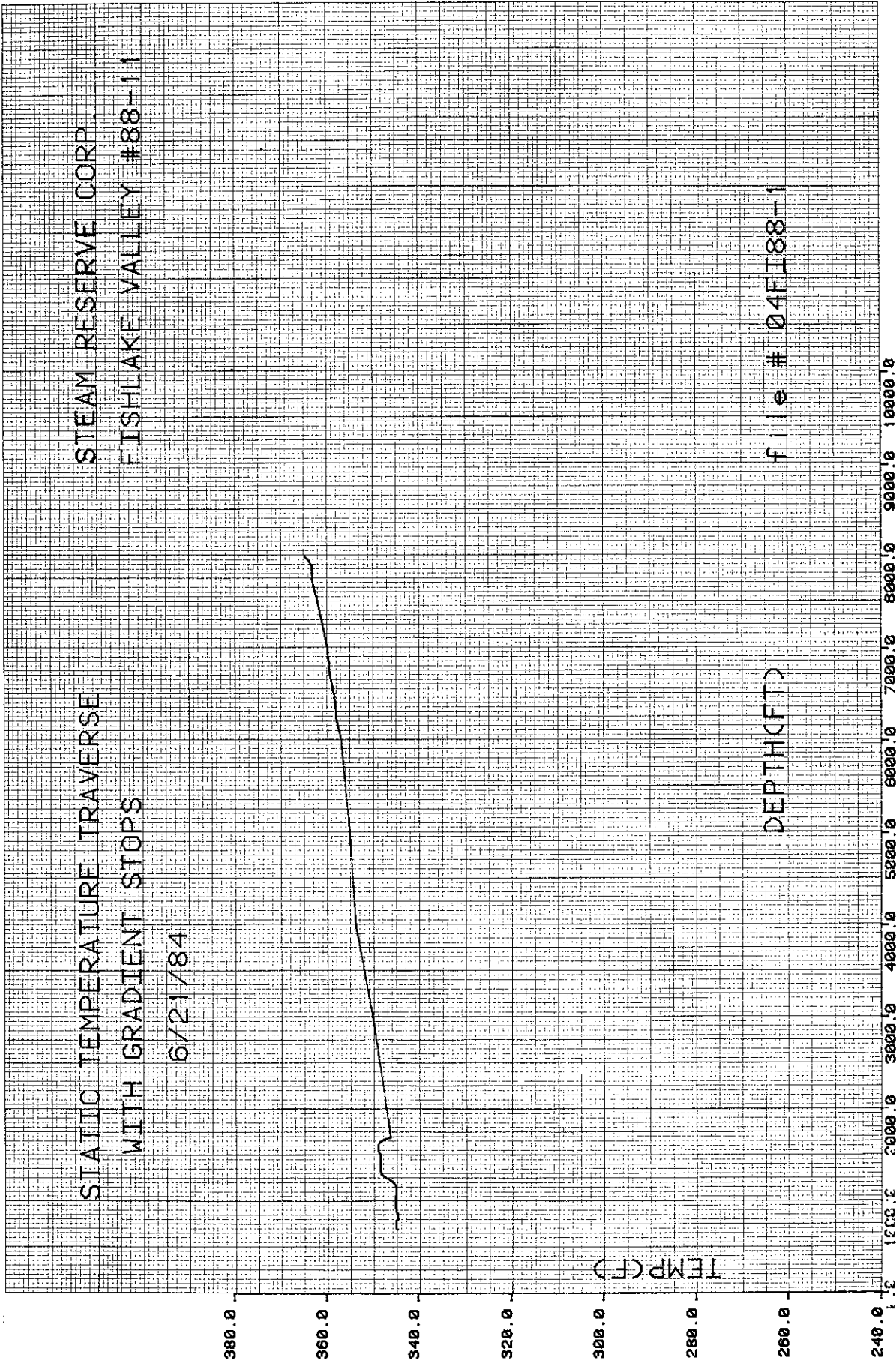
BY S. THOMPSON



STEAM RESERVE CORP.
FISHLAKE VALLEY #88-11

STATIC TEMPERATURE TRAVERSE
WITH GRADIENT STOPS
6/21/84

file # 04FI88-1



TEMP (F)

DEPTH (FT)

240.0 260.0 280.0 300.0 320.0 340.0 360.0 380.0
1000.0 2000.0 3000.0 4000.0 5000.0 6000.0 7000.0 8000.0 9000.0 10000.0