

Shlumberger

FDC/CNL/GR 2"

CSU

Field Log

COMPANY: STEAM RESERVE CORPORATION

WELL: FISH LAKE #88-11

FIELD: WILDGAT

COUNTY: ESMERALDA

STATE: NEVADA

NATION: USA * E & S 100'S OF NH COR

LOCATION: S180 * E & S100'S OF NH COR

SEC: 11

PERMANT DATUM: GL

ELEVATIONS-
ELEV. OF PERM. DATUM: 5120.0 F

LOG MEASURE FROM: K8

DRLG. MEASURED FROM: K8

DATE: 22 MAY 84

RUN NO: 2

DEPTH-DRILLER: 8100.0 F

DEPTH-LOGGER: 7916.0 F

TOP LOG INTERVAL: 6138.0 F

CASING-DRILLER: 1047 F

CASING-LOGGER: 1048 F

BIT SIZE: 12 1/4"

OTHER SERVICES-
DIL

PROGRAM:
TAPE NO: 26.2
SERVICE ORDER NO: 383530

TYPE FLUID IN HOLE: GEL-WATER
DENSITY: 8.8 LB/G
VISCOSITY: 41.0 S
PH: 8.8
FLUID LOSS: 18.6 C3
SOURCE OF SAMPLE: FLOWLINE
RM: 1.430 DHMM AT 104. DEGF
RMF: 3.350 DHMM AT 64.0 DEGF
RMC: 1.870 DHMM AT 70.0 DEGF
SOURCE RMF/RMC: MEASURED/MEASURED
RM AT BHT: .513 DHMM AT 302. DEGF
RMF AT BHT: .769 DHMM AT 302. DEGF
RMC AT BHT: .465 DHMM AT 302. DEGF

TIME CIRC. STOPPED: 1920 5/21
TIME LOGGER ON BTM.: 2359 5/21/8

MAX. REC. TEMP: 302.0 DEGF

LOGGING UNIT NO: 8126
LOGGING UNIT LOC: SACRAMENTO
RECORDED BY: ANDERSEN
WITNESSED BY: DEYMONAZ PILKINGTON

REMARKS:

LOGGED FROM 7900 AT CLIENTS REQUEST.
MRT#1 302 MRT #2 300 MRT #3 302

EQUIPMENT NUMBERS-

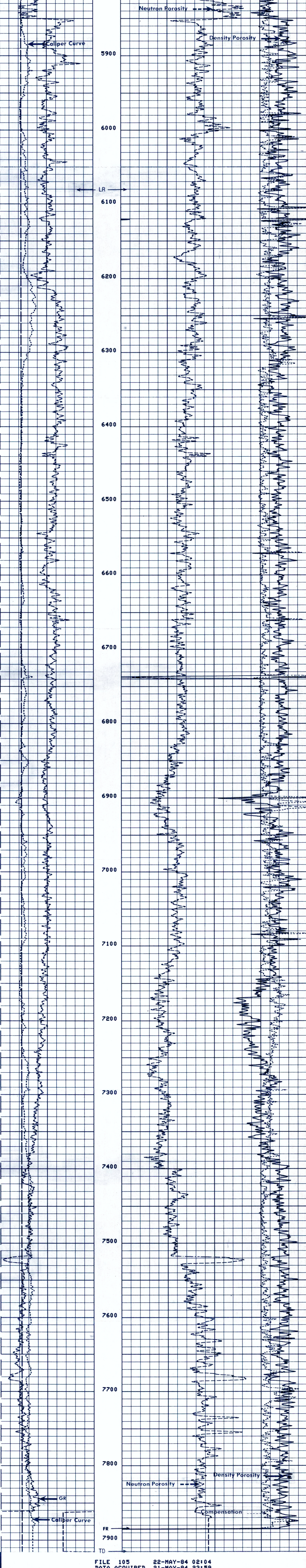
IEM 685 NLM 418 CNC 2687 PGS 675
PDH 1244 IS 1342 IC 1359

ALL INTERPRETATIONS ARE OPINIONS BASED ON INFERENCES FROM ELECTRICAL OR OTHER MEASUREMENTS AND WE CANNOT, AND DO NOT GUARANTEE THE ACCURACY OR CORRECTNESS OF ANY INTERPRETATIONS, AND WE SHALL NOT, EXCEPT IN THE CASE OF GROSS OR WILLFUL NEGLIGENCE ON OUR PART, BE LIABLE OR RESPONSIBLE FOR ANY LOSS, COSTS, DAMAGES OR EXPENSES INCURRED OR SUSTAINED BY ANYONE RESULTING FROM ANY INTERPRETATION MADE BY ANY OF OUR OFFICERS, AGENTS OR EMPLOYEES. THESE INTERPRETATIONS ARE ALSO SUBJECT TO OUR GENERAL TERMS AND CONDITIONS AS SET OUT IN OUR CURRENT PRICE SCHEDULE.

FILE 16 22-MAY-84 02:46
DATA ACQUIRED 00- -00 00:00

BS (IN)	20.000	DRHO(G/C3)	.2500
CALI(IN)	20.000	DPHI	.45000
GR (GAPI)	150.00	NPHI	-.1500
			-.1500

FILE 105 22-MAY-84 02:10
DATA ACQUIRED 22-MAY-84 01:12



FILE 105 22-MAY-84 02:04
DATA ACQUIRED 21-MAY-84 23:59

BS (IN)	20.000	DRHO(G/C3)	.2500
CALI(IN)	20.000	DPHI	.45000
GR (GAPI)	150.00	NPHI	-.1500
			-.1500

SENSOR MEASURE POINT TO TOOL ZERO

NCNL 46.9 FEET	GRNL 55.4 FEET
FFDC 31.5 FEET	FCFL 46.9 FEET
CALI 31.5 FEET	NFDC 31.5 FEET
SFL 6.4 FEET	ILD 9.4 FEET
SP 2.5 FEET	ILM 5.7 FEET
TENS 2.5 FEET	SPAR 2.5 FEET
NRAT 46.9 FEET	

PARAMETERS

NAME	VALUE	UNIT	NAME	VALUE	UNIT
HC	CALI	G/C3	PSNR	2.20600	
FD	1.00000		MATR	SAND	
FDCC	ALLD	MMHD	NFDC	2.65000	G/C3
DSEC	4.90000		BHF	WATE	
MSEC	7.20000		SBR	1.00000	DHMM
BS	12.25000	IN	BHS	OPEN	
SPDR	.0100000		DD	0.0	F
PP	RECD				