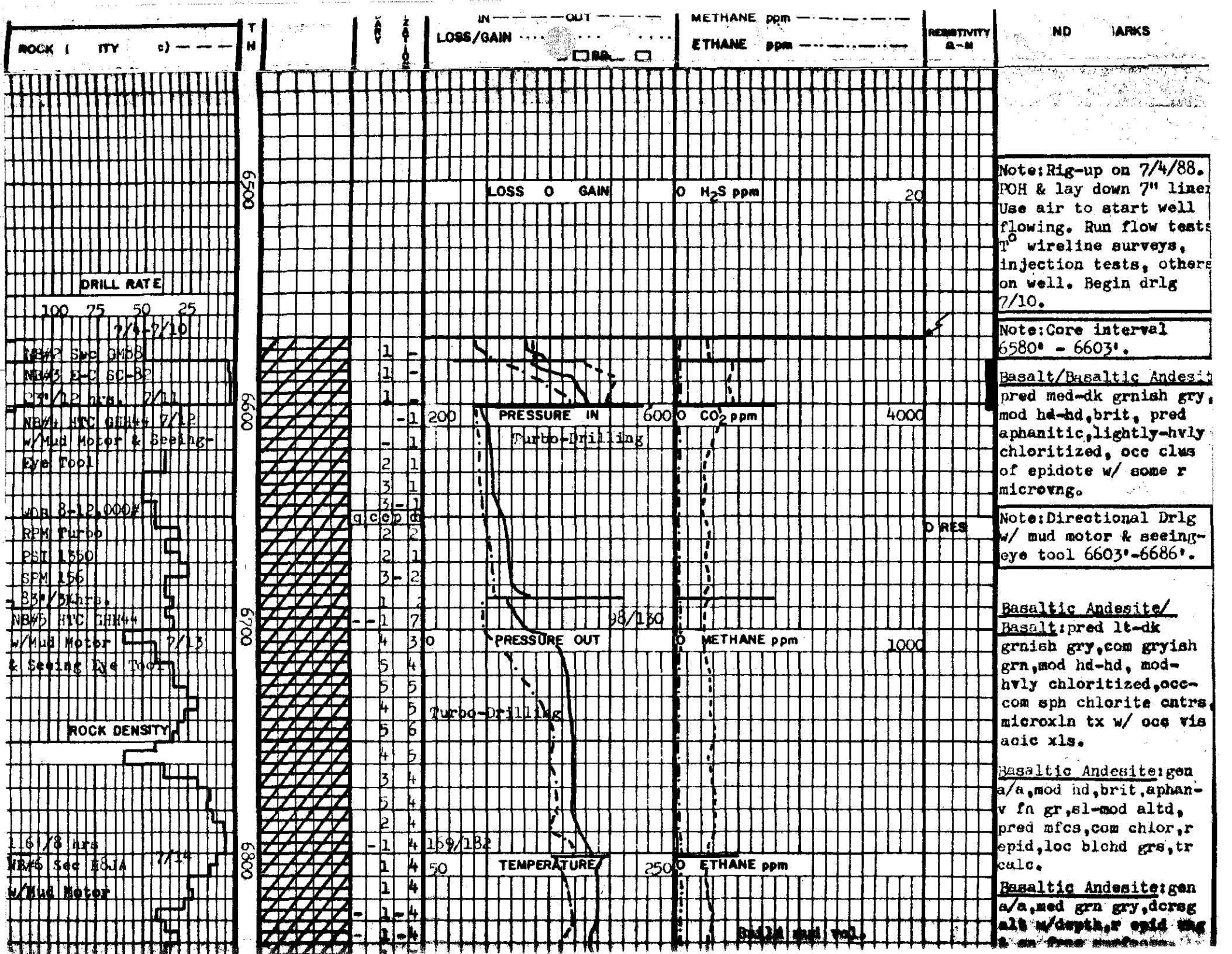
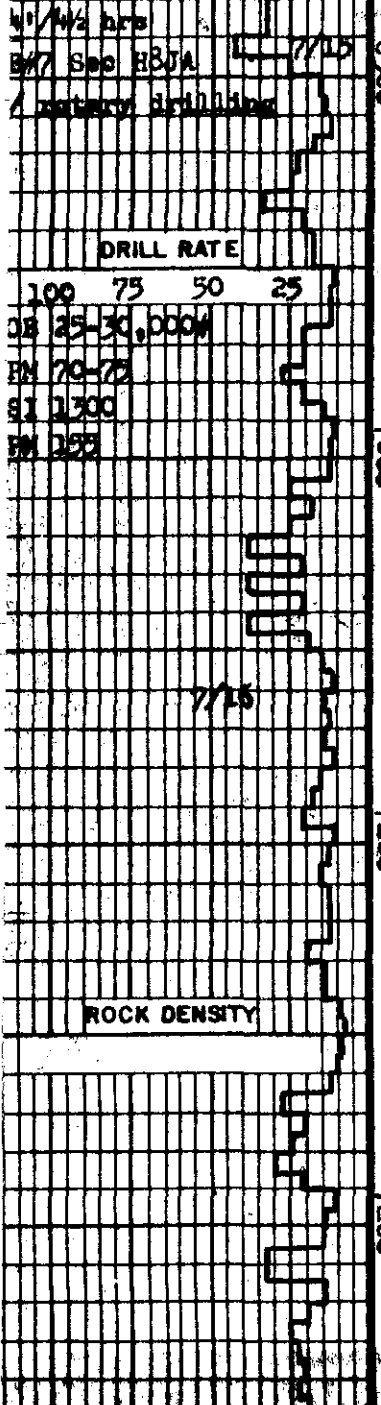


WELL 65-3  
GEOPH DATA LOG  
SMITH '88







2	2					
1	3					
1	1					
1	2					
1	3	154/195				
1	3		LOSS OF GAIN	0	H <sub>2</sub> S ppm	20
2	4					
1	2					
1	3					
2	2					
2	2					
1	2					
-2	6					
1	5					
2	5	164/180				
2	6	200	PRESSURE IN	600	CO <sub>2</sub> ppm	4000
-2	6					
-2	-3					
-2	-2					
-1	-1					
-1	-1					
-1	-1					
-1	-1					
6	1					
5	3					
6	4	171/181				
9	5	0	PRESSURE OUT	0	METHANE ppm	1000
+	5					
1	2					
1	2					
3	2					
8	4					
8	5					
-1	4					
1	3	169/178				
1	3	50	TEMPERATURE	250	ETHANE ppm	
-3	5					
-1	-5					
-1	-3					
-2	-4					

Note: losing 10-30 bbls/hr mud.

Build mud vol.

Note: stuck pipe @ 7050', free pipe w/ air & mud.

9°00' N73W

Basalt: med gry, med brn gr, v fn gr, mod hd-hd, sl altd, com chlritd gr, r epid, loc ctigs aphan w/med gr plag phenos.

W 64 V 37  
 YP 11 PV 7  
 F 44 FC 3  
 Sol 1.6 SD .25  
 pH 10.0 Cl 850

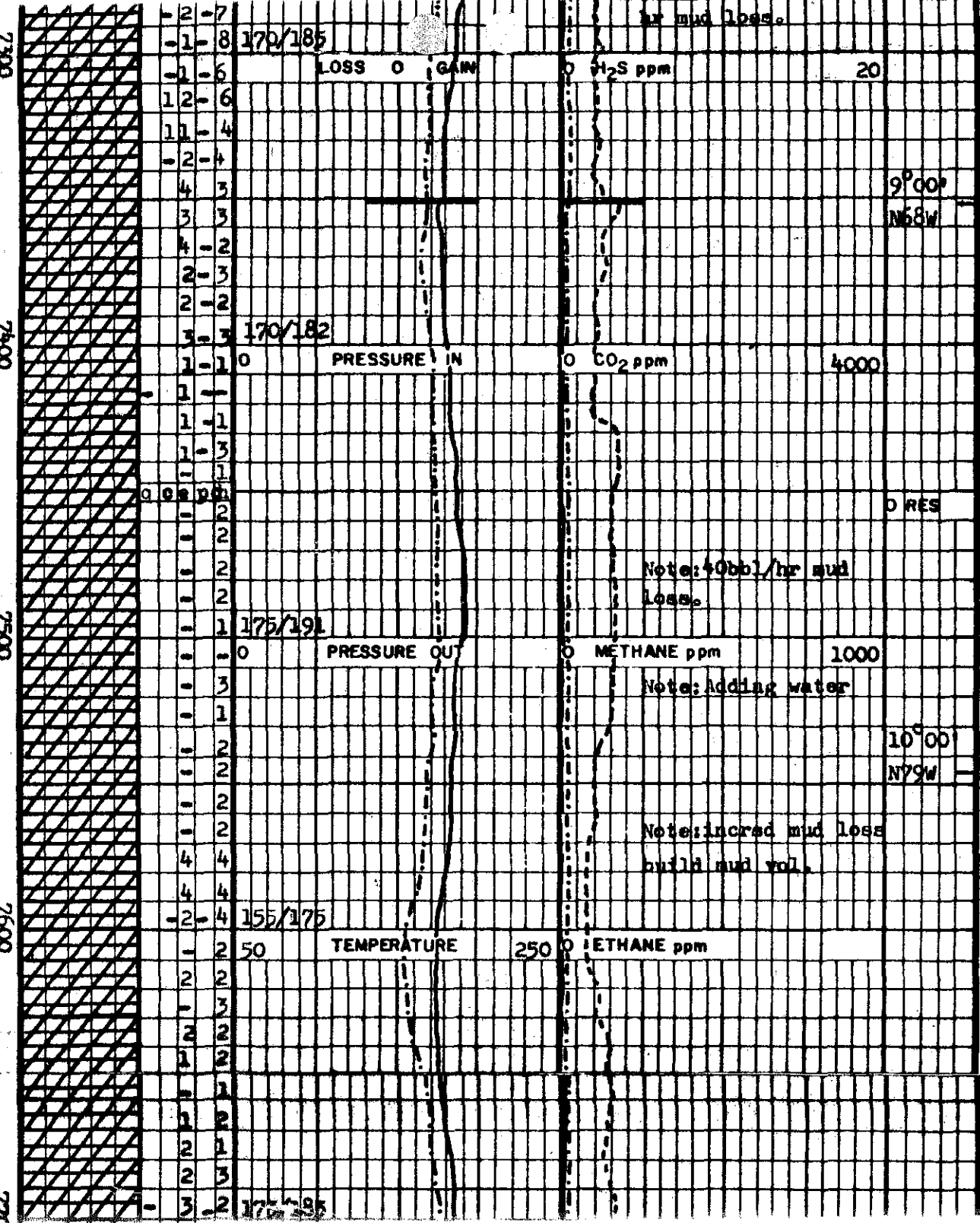
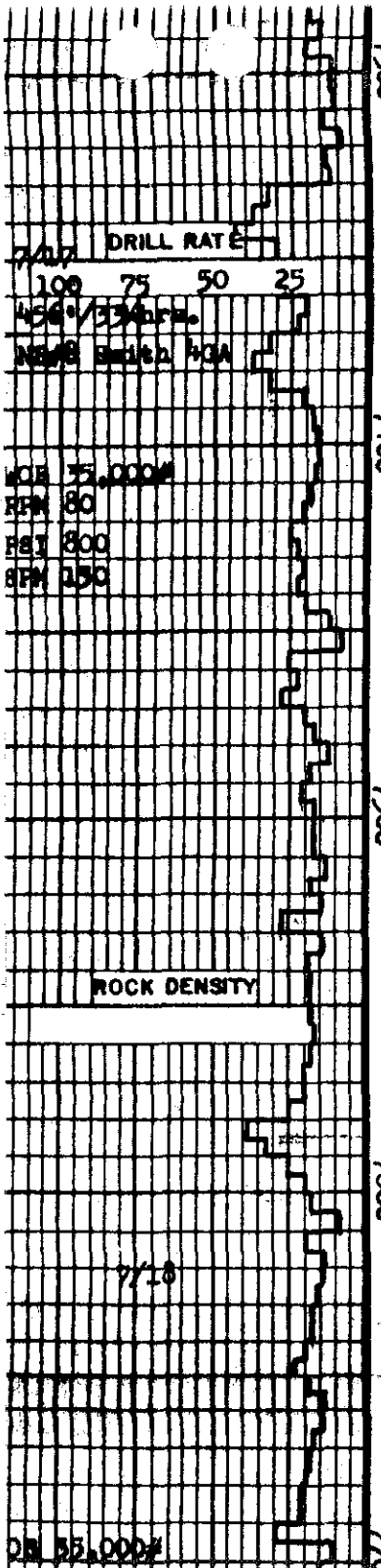
Basaltic Andesite: lt-med gry, loc brn gry, fn gr-aphan, mod hd, loc fri, mod altd, pred plag alt to wht sly min, com chlor, med epid, tr calc & org hem.

Silicified Felsic Tuff/Silicic Dike(?) : wht, hd-mod hd, brit, crpxln, mod altd, lt grn chlor wash, r epid, tr disem pyr & clr qts.

Basaltic Andesite/Basalt: pred med-dk gry, com lt-dk grnsh gry, occ v lt grnsh gry, mod hd-hd, fri, pred microxln tx, occ vis rel vol xln, loc mod-hvly chlritized, loc hvy epidote marlization occ pyr & sulfides vis.

Note: Mud loss continues at 20-40 bbls/hr.

Basaltic Andesite: gen a/a, loc v fn gr, tr rd hrs matrix frags.



dry min, apuan-v  
mod- hly td, abun  
chlo wash, r epid, r-  
mnr hem on frac surf,  
loc red brn scoria  
frags w/ves w/ calc, tr  
epid + amph + bornite  
@ 7320-30'.

W	64	V	35
PV	6	YP	9
F	38	CT	3
Sol	1.6	SD	.25
pH	10.0	Cl	800

Basaltic Andesite: a/a  
w/ rapid incr bleached  
& rexin appr 1/7380'.

Basaltic Andesite: f/  
7400-7420', lt grn, blchd  
appr, highly altd.

Basalt: f/7420'-7570',  
med-dk grn gry, hd, pred  
fresh, loc sl altd, loc  
mottled app, com blk v  
fn gr mafics, loc chl-  
rtzd, tr epid.

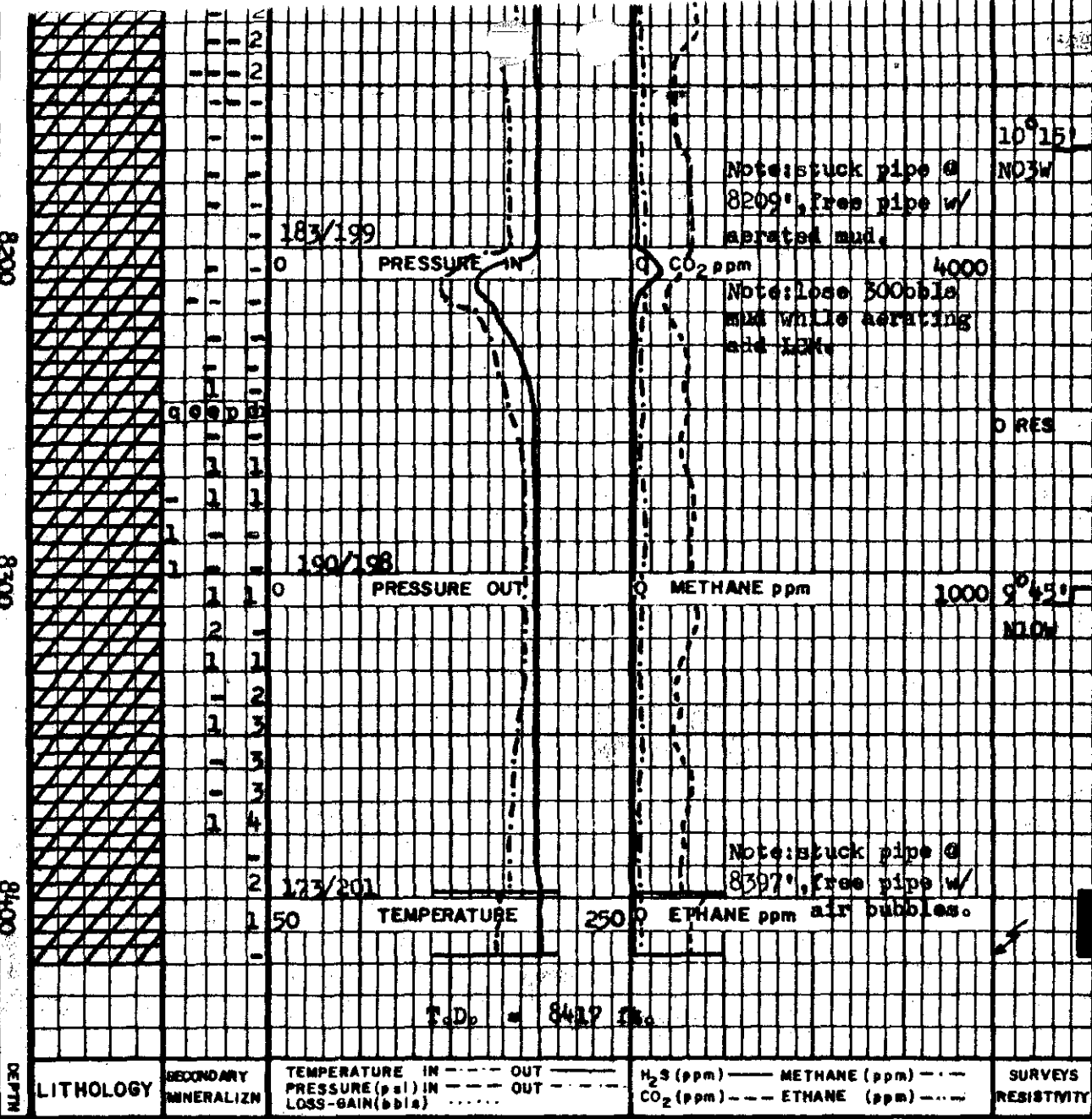
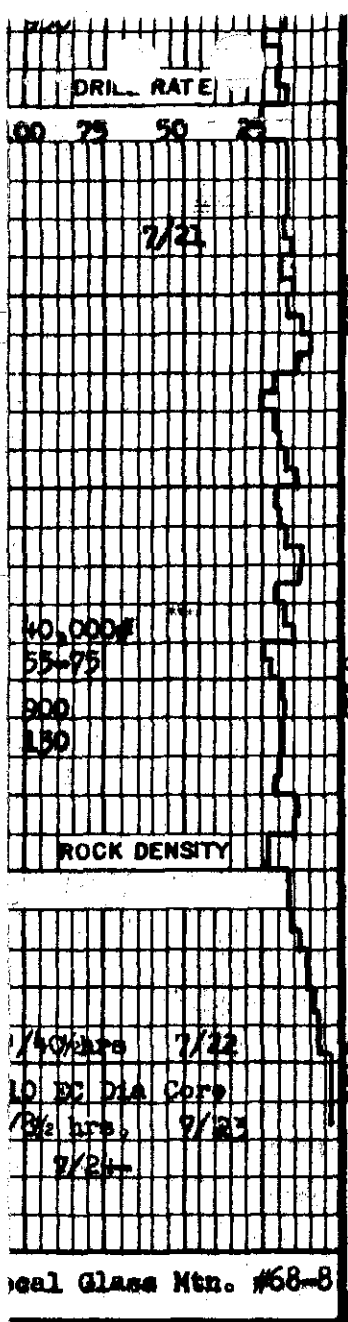
Basalt: gen a/a, incred  
mottled app, lt grn &  
lt purple, loc blchd  
plag.

Basaltic Andesite: lt-  
med gry grn, mod hd, v  
fn gr-aphan, rexin app,  
incred alt f/7580', hvy  
chlrtzd, mnr epid loc  
assoc w/ wht rims.

Basaltic Andesite: a/a  
w/ var deg of rexin  
tx & chloritization.

W	64	V	41
PV	10	YP	15
F	16.6	CT	2
Sol	1.6	SD	.25





Continued at 68-8  
bbls/hr in a' lge.

Basaltic Andesite/  
Basalt; med-dk gry, hd,  
brit, pred aphan, loc v  
fn gr, fresh, mnr sl alt,  
mnr chlor, loc tr pyr &  
calc.

Basaltic Andesite/  
Basalt; pred lt-v dk  
gry, med-dk greenish gry,  
occ med brownish gry,  
microxln tx, com mod-  
hvy reclin appr, occ-com  
v fresh appr, r-occ  
micro vesicles filled  
w/ clr qtz f/ 8270-  
8300, occ-com ms of  
chloritization, occ  
microxln amphibole xls  
vis.

Note: Core interval f/  
8399' to 8417'.

Note: T.D. @ 8417'. Run  
wireline logs, flow  
tests, injection tests,  
7" liner

REMARKS - LITHOLOGY  
EXLOG / SMITH PAGE 5

68-8

LITHOLOGY

SECONDARY  
MINERALIZN

TEMPERATURE IN --- OUT ---  
PRESSURE (psi) IN --- OUT ---  
LOSS-GAIN (bbls) .....

H<sub>2</sub>S (ppm) --- METHANE (ppm) ---  
CO<sub>2</sub> (ppm) --- ETHANE (ppm) ---

SURVEYS  
RESISTIVITY