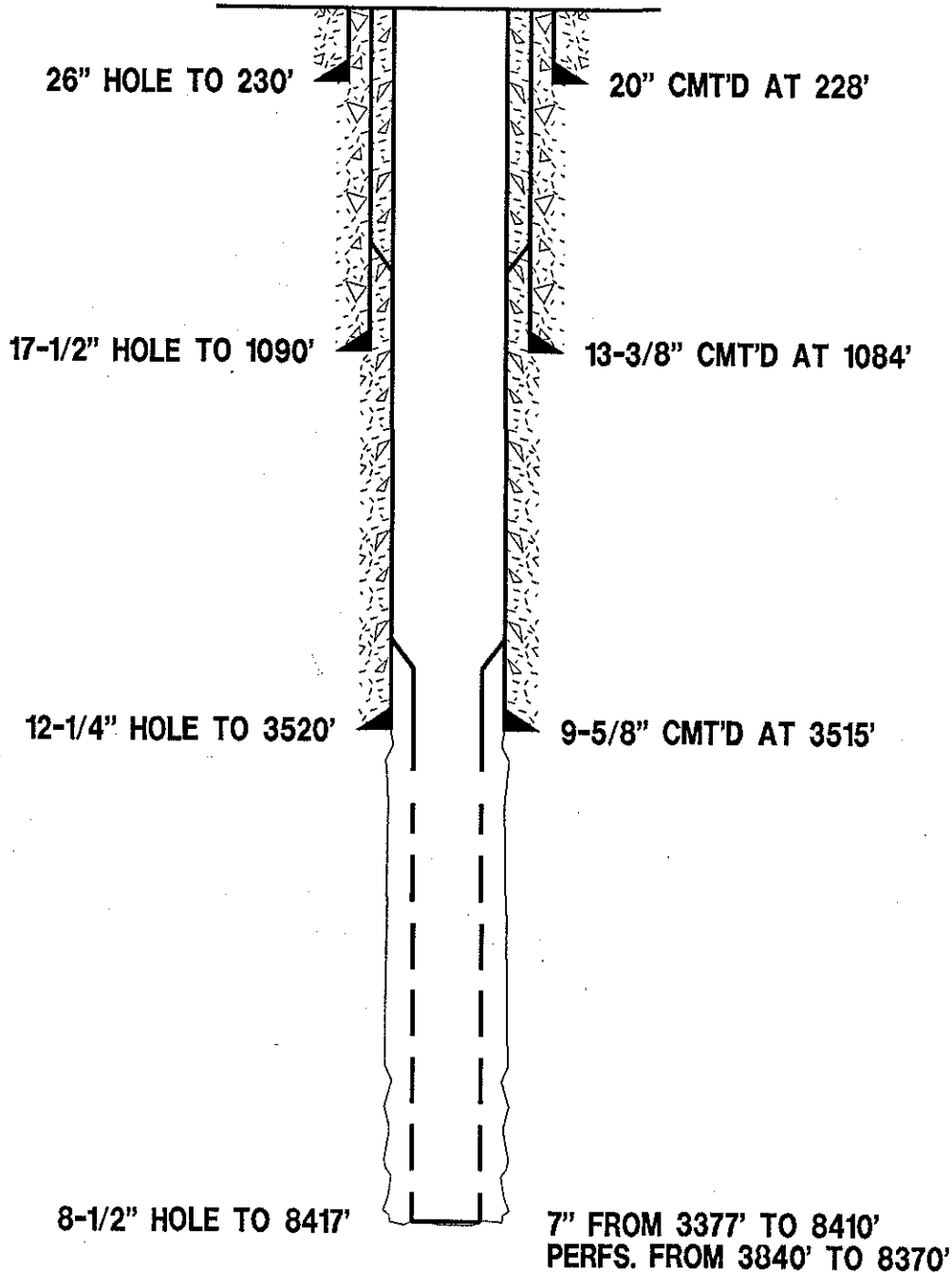
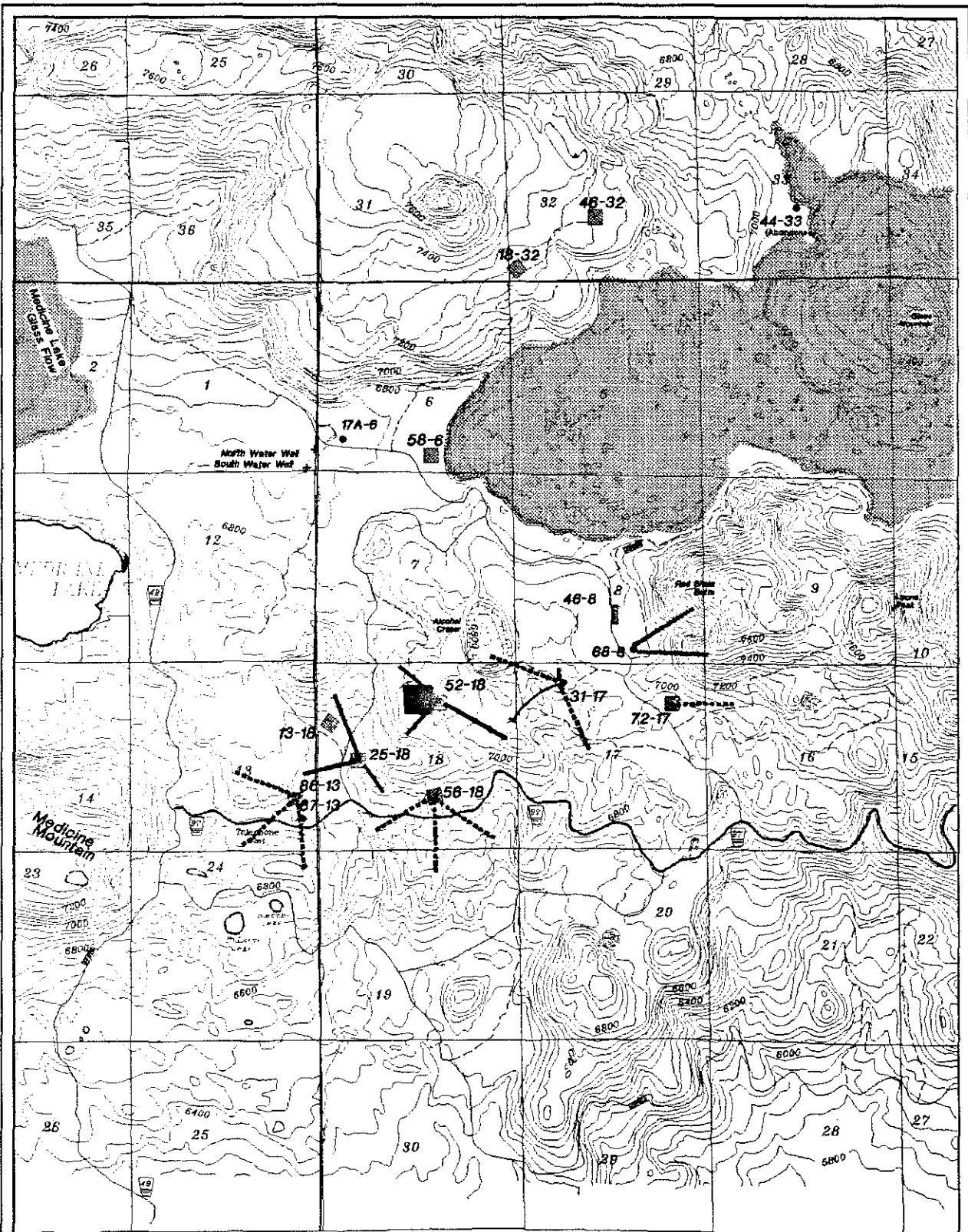


WELL 23-8 COMPLETION
TRK

GLASS MOUNTAIN FEDERAL 68-8 COMPLETION SCHEMATIC

COMPLETION DATE: 8/1/88

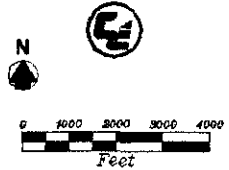


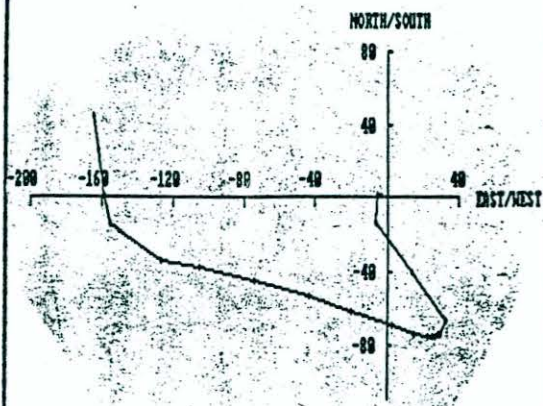


-  Proposed Power Plant Site
-  Existing Pad & Well
-  Prod. Proposed Start-Up Pads & Wells
-  Approved, Not Constructed Pad
-  Inj. Make-Up Well Pad

CE GENERAL CORP.
Glass Mountain Unit
Proposed Plan of Development

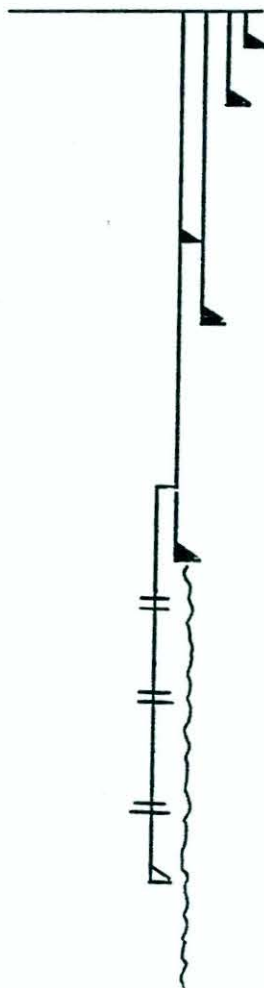
CONFIDENTIAL





Well Courses:

SCHEMATIC



DESCRIPTION

- 28', 30" line pipe conductor. Cemented.
- 228', 20" 94# K-55 Buttress casing. Cemented.
- TIE-BACK, 915'-Surface, 9-5/8" 40# K-55 Buttress casing. Cemented.
- 1084', 13-3/8" 54# K-55 Buttress casing. Cemented.
- 3515', 9-5/8" 40# K-55 Buttress casing. Hung on Midway liner hanger at 912'. Cemented.
- 8410, 7" 26# K-55 pre-perforated Buttress casing. Hung on Midway 7" x 11-3/4" liner hanger at 3377'. Not cemented.
- 8417', T.D. 8-3/4" open hole.

STEAM ENTRIES

N/A

CONFIDENTIAL

SIDE TRACKS

N/A

LOST CIRCULATION ZONES

495' - intermittent below 3520'.

MISCELLANEOUS

RIG: GRACE DRILLING CO. #169

LOCATION: 9053.4' East and 5073.5' South of the NW Corner of Section 7, T44N, R4E, MDB&M

B.H.L.: 44.9' North & 164.6' West of the surface location.

U N I O N

GLASS MOUNTAIN FEDERAL UNIT 68-8
DEEPENING
MEDICINE LAKE PROSPECT
SISKIYOU COUNTY, CALIFORNIA

GROUND ELEVATION:	<u>6991'</u>	START DATE :	<u>07/03/88</u>	T. M. DEPTH:	<u>8417'</u>
KELLY BUSHING :	<u>30'</u>	COMPLETION DATE:	<u>08/02/88</u>	T. V. DEPTH:	<u>8394.40'</u>
TOTAL FOOTAGE :	<u>8417'</u>	RIG TEST :	<u>N/A</u>	E. T. DEPTH:	<u>8417'</u>