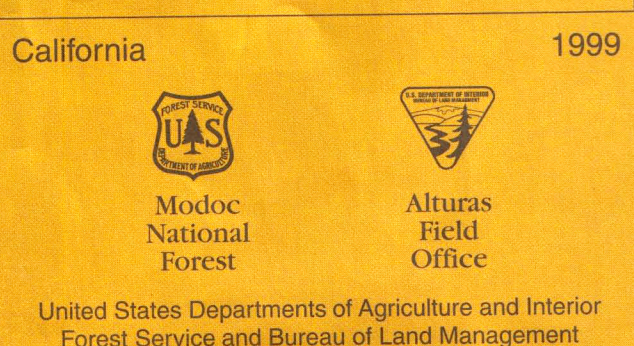


Modoc Country

Welcome...

to Modoc Country a land of contrasts and unspoiled settings for a vacation holiday, nestled in the extreme northeastern corner of California. The vast expanse of Modoc Country is 140 miles from Redding on Highway 299 and 170 miles from Reno, Nevada over Highway 395. Modoc Country is bordered on the east by the dramatic Warner Mountain Range. Bordered by Oregon on the north and Nevada to the east, Modoc Country has the best of these varied lands: mountains, pine forests, meadows, lakes, streams, rugged canyons, wetlands, lava beds and high desert plateaus. Crowds and congestion are nonexistent. Elevations range from 3000 feet to 9934 feet. Modoc Country is where the west still lives.

Modoc Country - where the west still lives



United States Department of Agriculture Interior Forest Service and Bureau of Land Management



For more information:
Modoc National Forest
Forest Supervisor's Office
900 W. 12th Street
Altura, CA 96001
(530) 233-5811
(530) 233-7877
http://www.fs.fed.us/modoc/

Big Valley Ranger District
500 Main Street
PO Box 159
Altura, CA 96001
(530) 233-5811
(530) 233-7877
http://www.fs.fed.us/modoc/

Devil's Garden Ranger District
900 West 12th Street
Altura, CA 96001
(530) 233-5811
(530) 233-7877
http://www.fs.fed.us/modoc/

Doublehead Ranger District
Dev. 122, South of Ukiah
PO Box 309
Tahoe Valley, CA 96154
(530) 667-2346
http://www.fs.fed.us/modoc/

Warner Mountain Ranger District
500 Main Street
PO Box 220
Caldwell, CA 96030
(530) 279-0116
(530) 279-2807
http://www.fs.fed.us/modoc/

Bureau of Land Management
Altura Field Office
700 Main Street
Altura, CA 96001
(530) 233-6666
http://www.blm.gov/altura/

Bureau of Land Management
Surprise Field Office
602 Creeper Street
Caldwell, CA 96034
(530) 279-0101
http://www.blm.gov/surprise/

BLM Public Information
(530) 279-2900
National Park Service
Lava Beds National Monument
PO Box 800
Tulelake, CA 96154
(530) 667-2282
http://www.nps.gov/lava/

High Wilderness Service
Modoc National Wildlife Refuge
PO Box 1010
Altura, CA 96001
(530) 233-3572
http://www.fs.fed.us/govnet/

Klamath Basin National Wildlife Refuge Complex
Route 1, Box 71
Tulelake, CA 96154
(530) 667-2282
http://www.klamathbasin.org

Shasta Cascade-Wonderland Association
Visitor Center
Altura, CA 96007
(530) 238-2512
http://www.shastascascade.org

Owner Photo - Looking West above Altura, Pt. View
measuring 10.5 miles, barely visible in background,
later "setting the scene" -
www.modoccountry.com

Rockhounding

Rockhounding is one of the most popular recreational activities in the region. The Warner Mountains have one of the most unique obsidian deposits in the United States, with four areas open for collection. Commercial gatherers have their areas identified, be sure to find out from a Forest Service office where you can gather, and receive your authorization before collecting.

Federal laws prohibit collection or excavation of prehistoric and historic artifacts and vertebrate fossils without a special federal permit for scientific research. If you find an archeological or historic site during your visit, please contact the nearest Forest Service or BLM office. Artifacts at a natural site fit together like pieces of a puzzle, revealing the history and heritage of Native Americans and early settlers. Artifacts are not to be removed from federal land.

Outdoor Manners

Only use existing campfire rings. Leave your camp cleaner than you found it. Pack out your trash. Respect private land as you would like others to respect your own. Do not camp on private land without permission. Leave gates as you find them - open or closed.

Lava Beds National Monument

Volcanic eruptions from the Medicine Lake shield volcano created a rugged landscape punctuated by cinder cones, lava flows, spatter cones, lava tube caves and pit craters. Visitors can tour the geologic and historic wonders of this unusual landscape.

Winter Sports

A snowmobile trailhead is located at the Doodnob Snowmobile Park, 1.5 miles south of Lava Beds National Monument. The Sno-Pak features a paved parking lot, a warming hut and restrooms. Two groomed trails lead to Medicine Lake and three other Sno-Paks on neighboring national forests. The Medicine Lake Highlands offer some of the best snowmobiling in California.

Cedar Pass

Cedar Creek, east of Madeline off Highway 395, provides an opportunity to experience dramatic scenery and sunsets, as well as a sense of peace and serenity. Although the 8.5 mile per cental section is entirely on private land, the BLM worked in partnership with landowners, ranchers and other agencies to restore the watershed. Three trailheads provide access to the area only by foot or horseback. An easy walk along the hiking trail draws you to the creek.

Camper permits are required and are available free of charge from the Forest Service and BLM. Be careful with fire at all times, but particularly from mid-April through October. Drown your campfire, stir and drown again until dead and report all wildfires to the nearest Forest Service. Report all wildfires to the nearest Forest Service. Protection or county sheriff's office and check daily for fire danger levels.

Noxious Weeds

"Noxious weed" means any species of plant that is, or likely to be, troublesome, aggressive, invasive, silvicultural, or important native species, and difficult to control or eradicate. Continuing efforts to protect agriculture and manage for natural communities stress that it is important to identify infestations of noxious weeds as they become established. Information on identifying and managing noxious weeds is available at Forest Service and BLM offices.

Viewing Areas

Modoc National Wildlife Refuge offers an auto route that provides wildlife observation and photography. A photography blind is available by reservation and an easily accessible trail provides opportunities for toddlers or wheelchairs. A wildlife viewing area, easily accessible, is found just south of Altura on Highway 395. Visitors can expect to see several species of waterfowl, sandhill cranes, mule deer and pronghorn.

Cedar Pass Hill overlooks downtown and scenic country setting.

Pt. View Canyon

Staying Safe

Be prepared for medical emergencies while outdoors, including exposure to ticks and snakes. Ticks are carriers of agents that cause Rocky Mountain spotted fever, Colorado tick fever, tick paralysis, Lyme disease and malaria. Be careful while walking over loose rocks, and move away if you hear the distinctive buzzing sound of a snake's "rattle." Don't put your hands over ledges, in brush, or other areas you can't see.

• Always wear your footing to avoid a fall.
• Always keep a first aid kit with you.
Mountain weather can change rapidly and unexpectedly. Snowfall is common, occasionally even in the summer. Thunderstorms and lightning often arise rapidly and without warning. Always be prepared with water, warm clothing and food when traveling in undeveloped areas.

If you have a vehicle breakdown, keep in mind it could be some time before another vehicle passes by. Have something to keep you warm overnight. Stay with your vehicle. It will provide shelter and make you easier to find. Plenty of water, warm clothes or a sleeping bag and some food will make the wait less troublesome.

Before setting out, make sure your gas tank is full. Drinking water - water quality testing is not performed on open water sources, which may be contaminated by human and animal wastes. Treat water from springs, lakes, ponds and streams before drinking, using filters or boiling for five minutes, treating with chemical purification or filtering through a granita filtering system.

Mine shafts - there are unposted, dangerous, open mine shafts. Stay out!
Remote travel area - always let someone know where you're going and when you plan to return. If you are headed into remote country, it is wise to travel with a second vehicle to better deal with any problems.

Wildlife

Modoc Country is home to more than 300 species of wildlife. Among threatened, rare, endangered or sensitive are bald eagle, Peregrine falcon, Modoc, Lost River and shortnose suckers, Goose Lake redband trout, goshawk, golden eagle, northern spotted owl and sandhill crane. The Pacific flycatcher and directly over the area. During migration from Alaska and Canada to Mexico, hundreds of thousands of waterfowl rest at local wetlands and streams.

Rocky Mountain mule deer, noted for its large body and antler size and pronghorn, once considered almost extinct, make their home in Modoc. Rocky Mountain elk, the second largest and most numerous elk subspecies nationwide, have migrated to Modoc County from Oregon. Large group sightings are becoming common in some areas.

Modoc Country is home to wild horses and burros which trace their origins to the late 1800s, when they escaped from early settlers or were abandoned by farmers, ranchers and miners. They are protected by a federal law, the Wild Horse and Burro Act, which directs the Bureau of Land Management and the Forest Service to manage, protect and control the wild, free ranging horses and burros on public lands. A herd of about 300 wild horses in the Devil's Garden area of northern Modoc County, and smaller herds in the Carter Reservoir and Red Rock areas. Large numbers of horses live in the Nevada desert east of Modoc County. Wild horses are rounded up and placed in an adoption program when populations exceed the land's ability to support them.

Northern, Modoc Country is a part of the largest remaining concentration of bald eagles in the lower 48 states, coming from the north, primarily from Canada. The largest numbers are found in the Devil's Garden area and several smaller groups in other areas.

Mountain Bike Routes

Modoc Country features three bike routes with spectacular views and breathtaking panoramas for all ability levels. The Devil's Garden route is suitable for the beginner through advanced rider. It has three miles of gravel and 2.5 miles of dirt roads. The advanced rider can veer off on steeper grades. This route passes portions of the Lassen Emigrant Trail.

Woodland Jurassic Ride is for beginners to intermediate riders with 8.6 miles of Modoc Country Road 54. It has a gentle slope with mostly level ground and offers great views of the Warner Mountains and some California sensitive plants.

The Likely Mountain Challenge has 7.2 miles of dirt road and 2.2 miles of old broken highway for the advanced rider wanting to tackle steep climbs. Small rescuers along this route offer wildlife viewing.

Hundreds of miles of roads and trails await bikers in Modoc Country. Biking opportunities range from gravel roads to boulder strewn back country trails.

Camping

You can choose from a variety of campgrounds or picnic areas, available on a first-come, first-serve basis. Maximum length of stay is 14 days, and fees are charged at some campgrounds. Don't limit yourself to thinking of only developed campgrounds. Many areas are available for back country camping to provide a memorable experience close to nature.

Differing road types and conditions result in some site limits for recreational vehicles. Check with Forest Service or BLM office for information about facilities and sites accessible to people with disabilities.

Fishing

Many reservoirs, lakes and streams are stocked with rainbow, German brown and eastern brook trout, Bass, catfish, bluegill and crappie await anglers in warm water lakes and streams throughout the area. Access ranges from good gravel roads and well located boat launching ramps to walk-in sites in steep, wilderness settings.

Roads on Public Lands

Finding your way through hundreds of miles of public land is different from driving on county roads or state highways. Everyone should use caution and common sense when venturing into the back country. To fully enjoy your visit to Modoc Country, please observe these precautions. Encounters with logging trucks are likely, even on weekends. Avoid driving or spinning tires on muddy or heavily rutted roads. Keep vehicles of late shoes and streambeds, and stay out of wet meadows. Don't expect to find food or gas along back country roads.

National Forest route signs have white numbers on a brown background, and are clearly posted at road entrances and intersections. The route numbers are also shown on the map. Driving rules that apply to state highways also apply to public lands.

Maintained Roads

These two signs are used to identify primary and standard National Forest roads that are maintained for passenger vehicles. Road surfaces may include pavement, gravel, or dirt. Primary routes generally offer the best route through the forest. Standard routes are also suitable for passenger vehicles but may not be as smooth or as well maintained as primary routes. Check the map legend to determine the type of surface on the route. It may begin with a paved or gravel surface and change to dirt.

Roads Not Maintained for Low Clearance Vehicles

Many roads receive only minimum maintenance. These roads are indicated on the map by dashed numbers. Respect encounter rocks, downed trees, road washouts and brush encroaching on the roadway. Drive slowly and carry extra equipment such as axe, shovel, gloves, and fuel. Signs for these roads would show the route number vertically. These roads are not maintained for passenger cars.

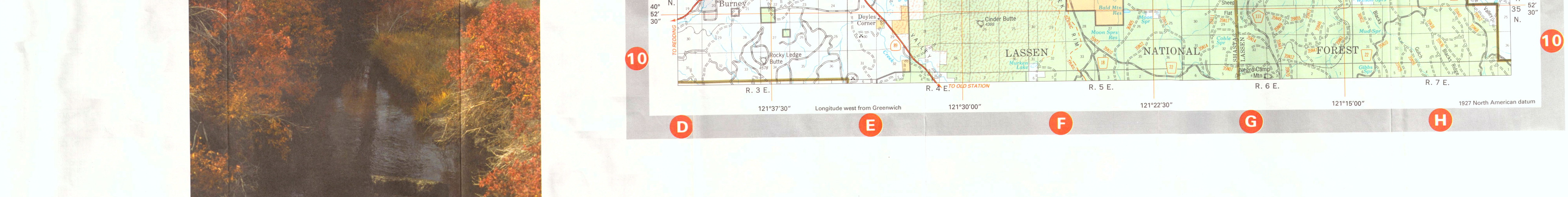
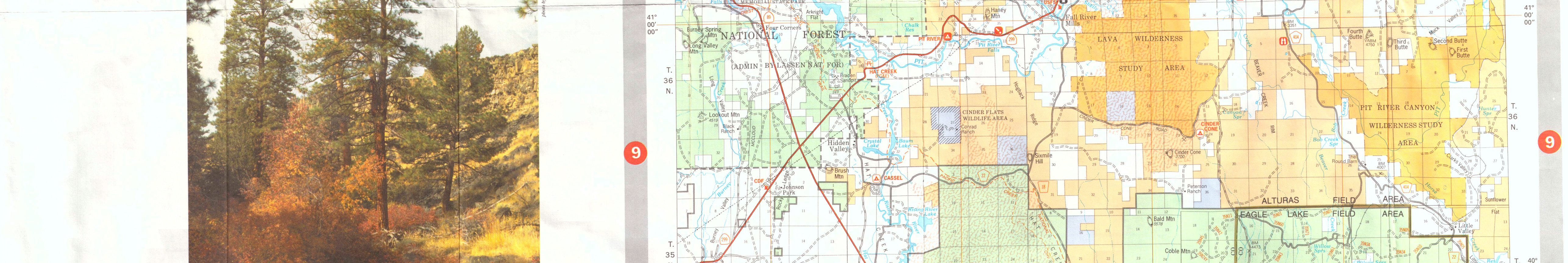
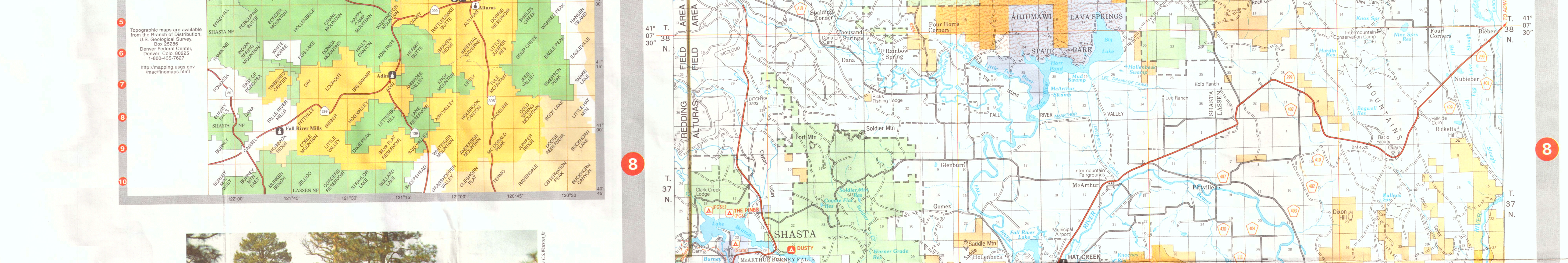
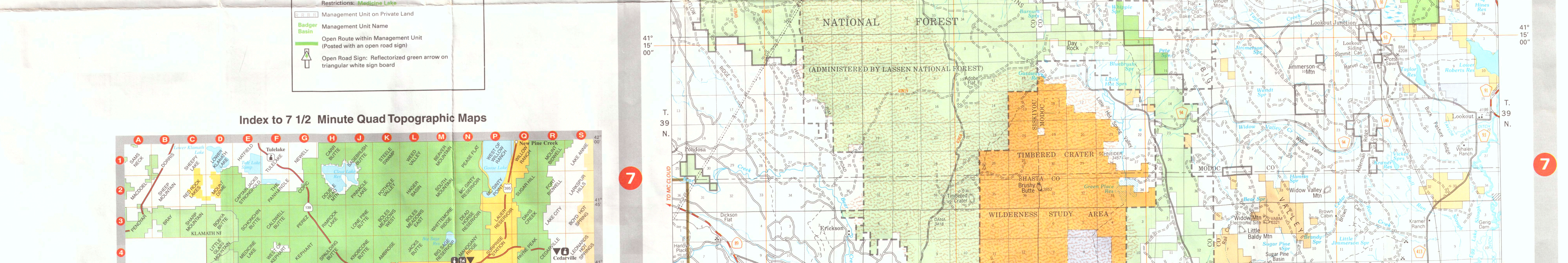
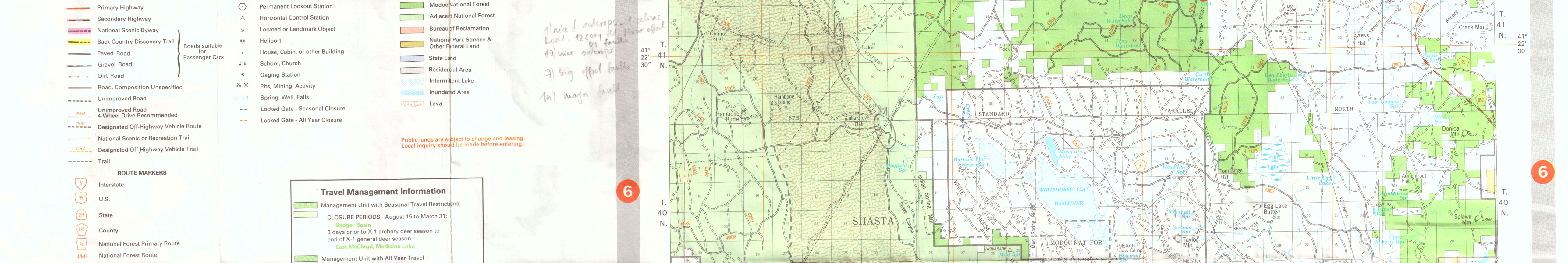
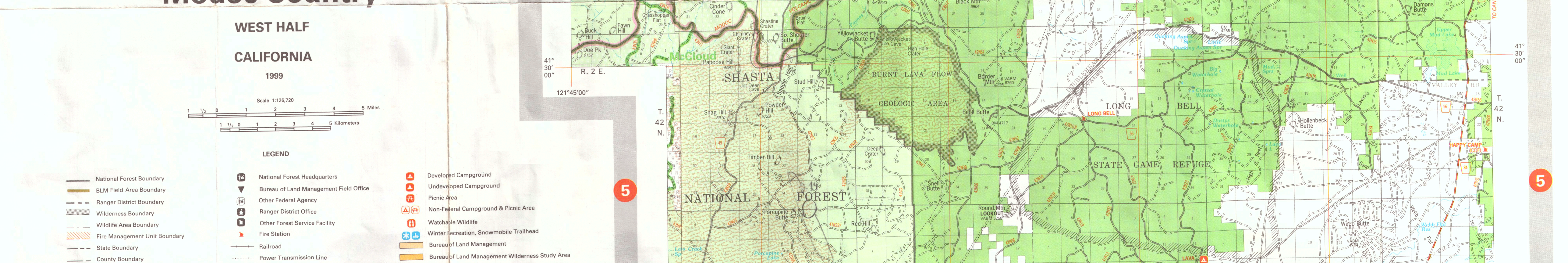
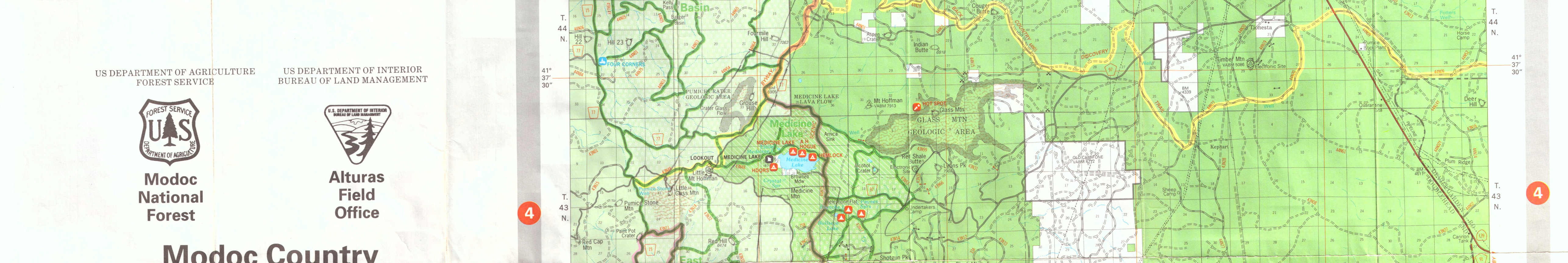
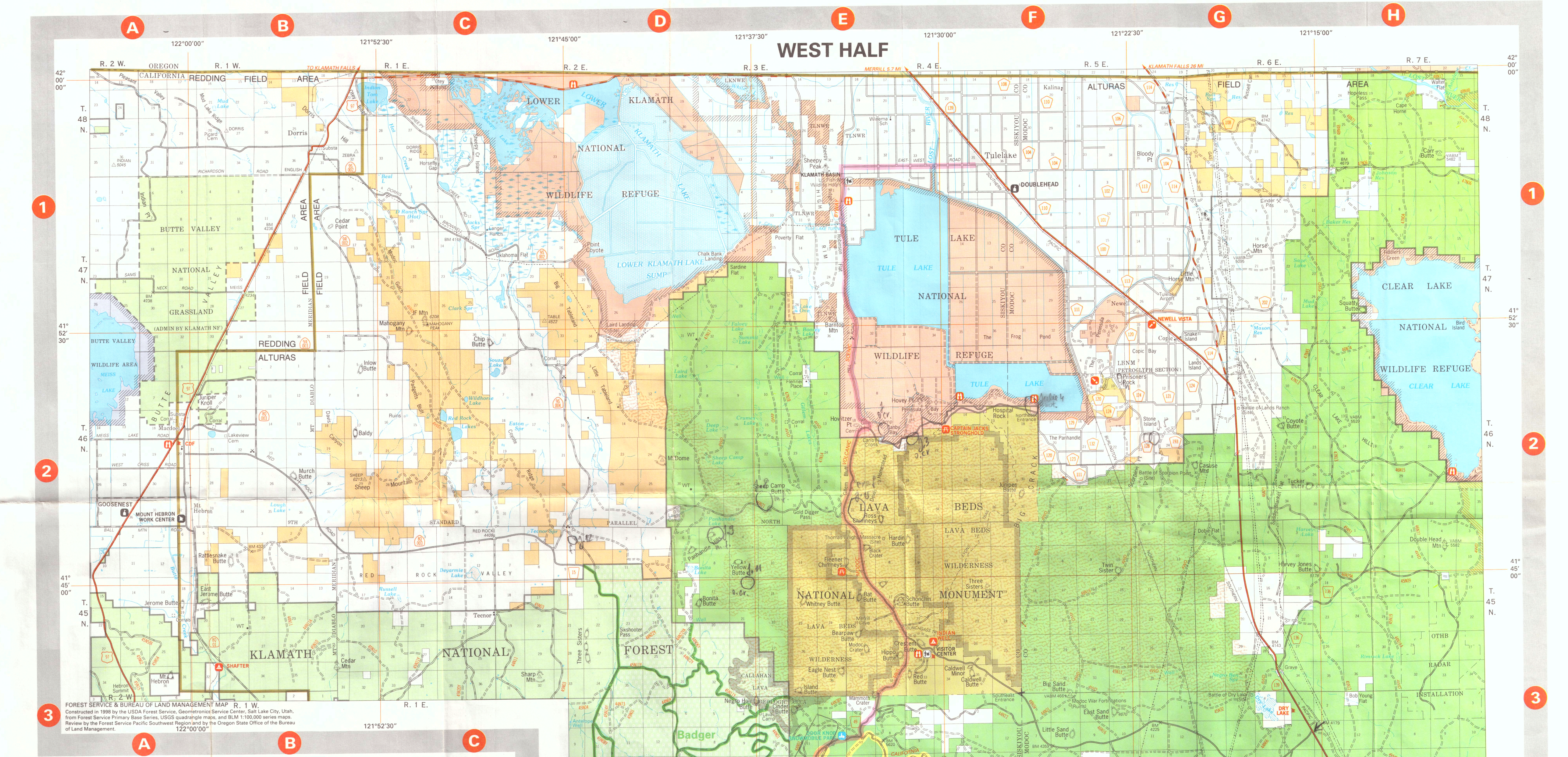
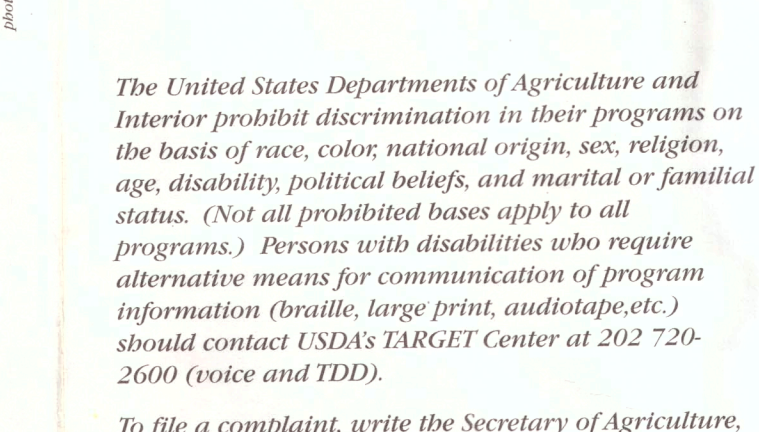
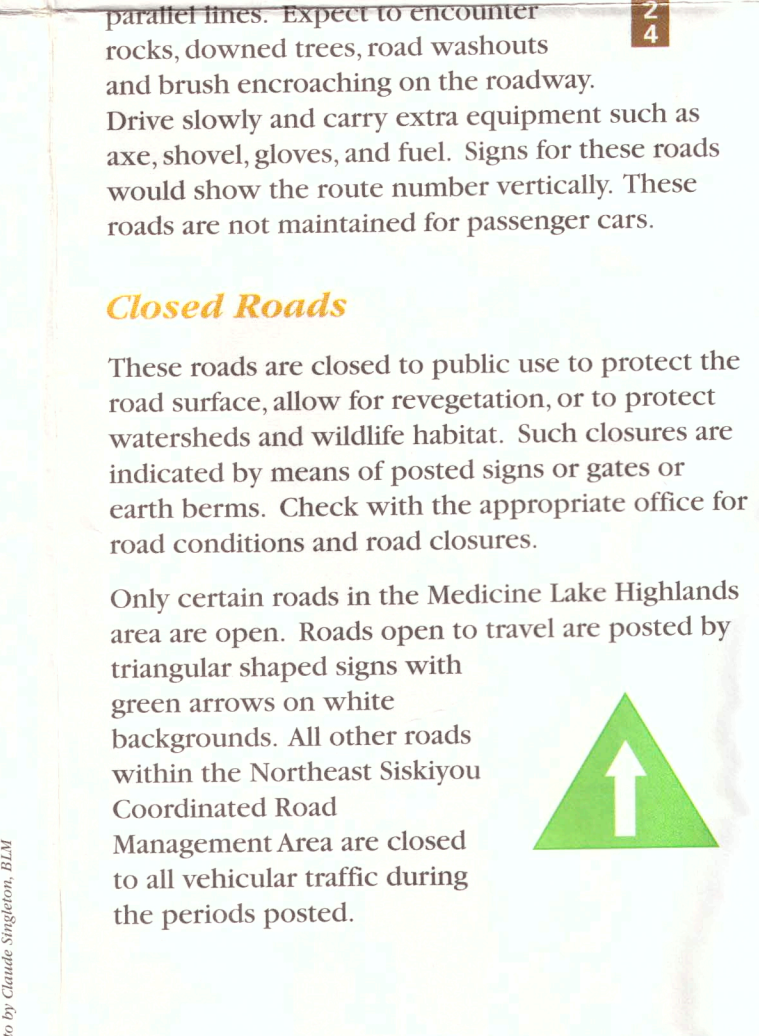
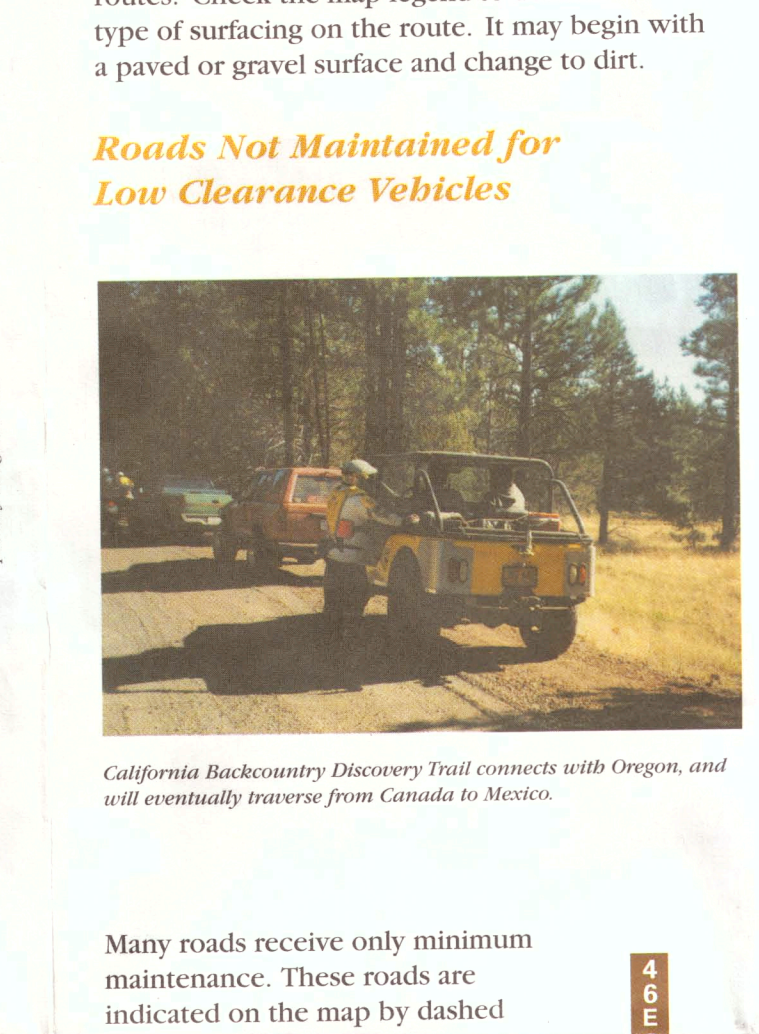
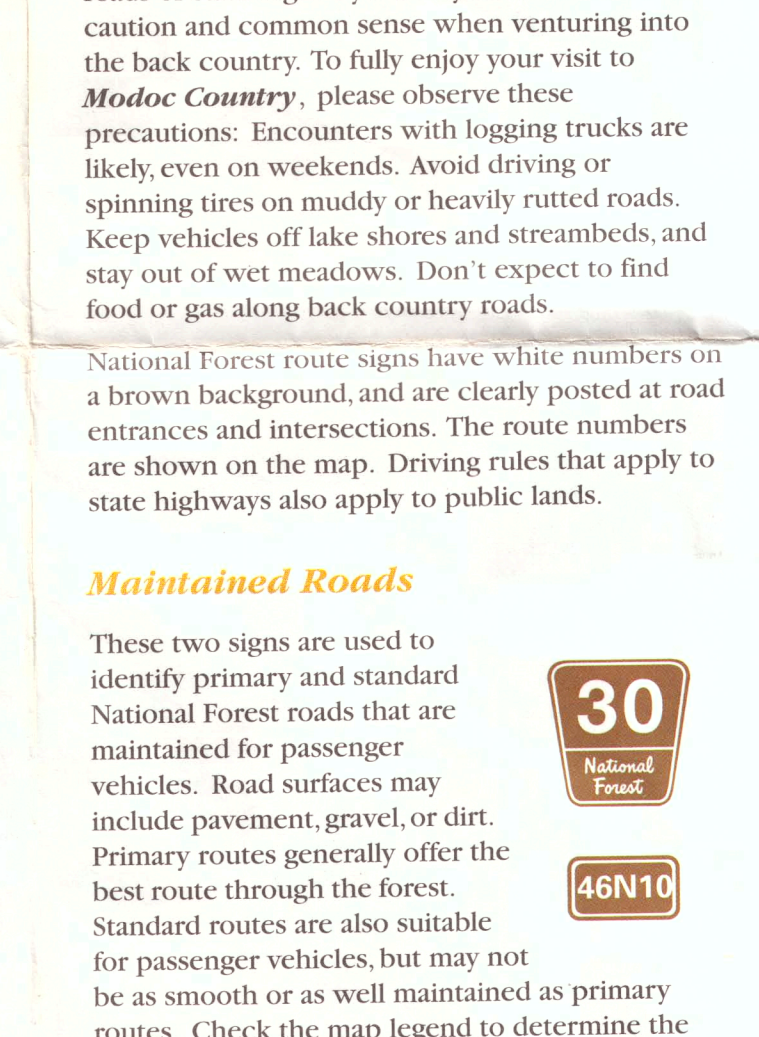
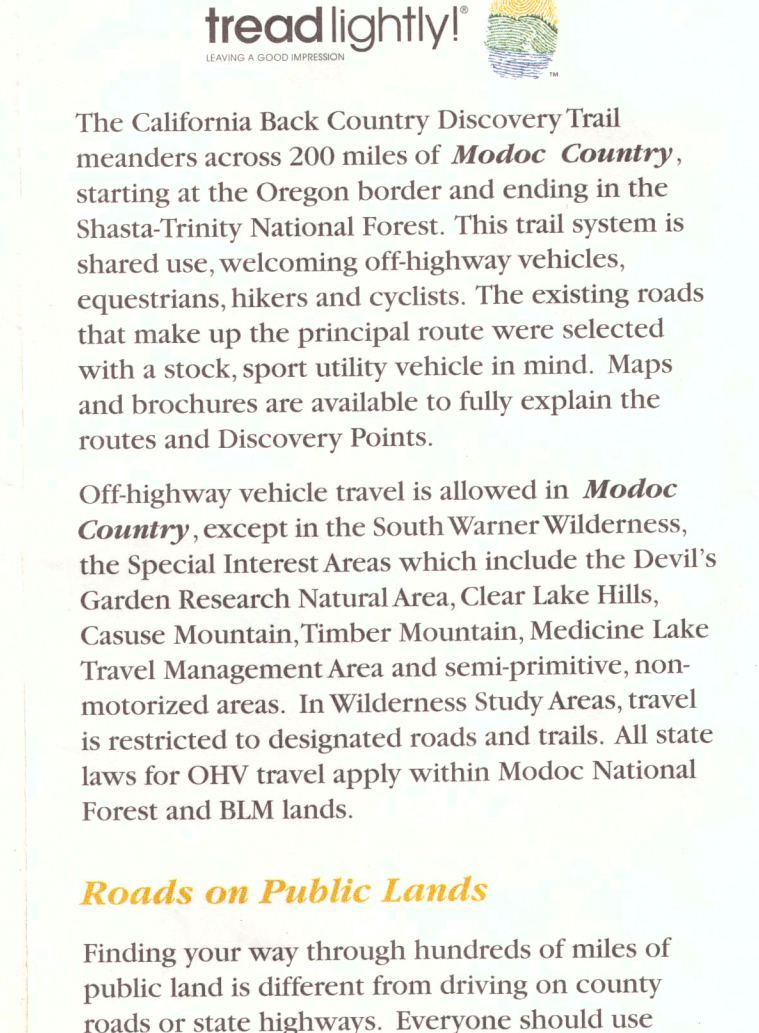
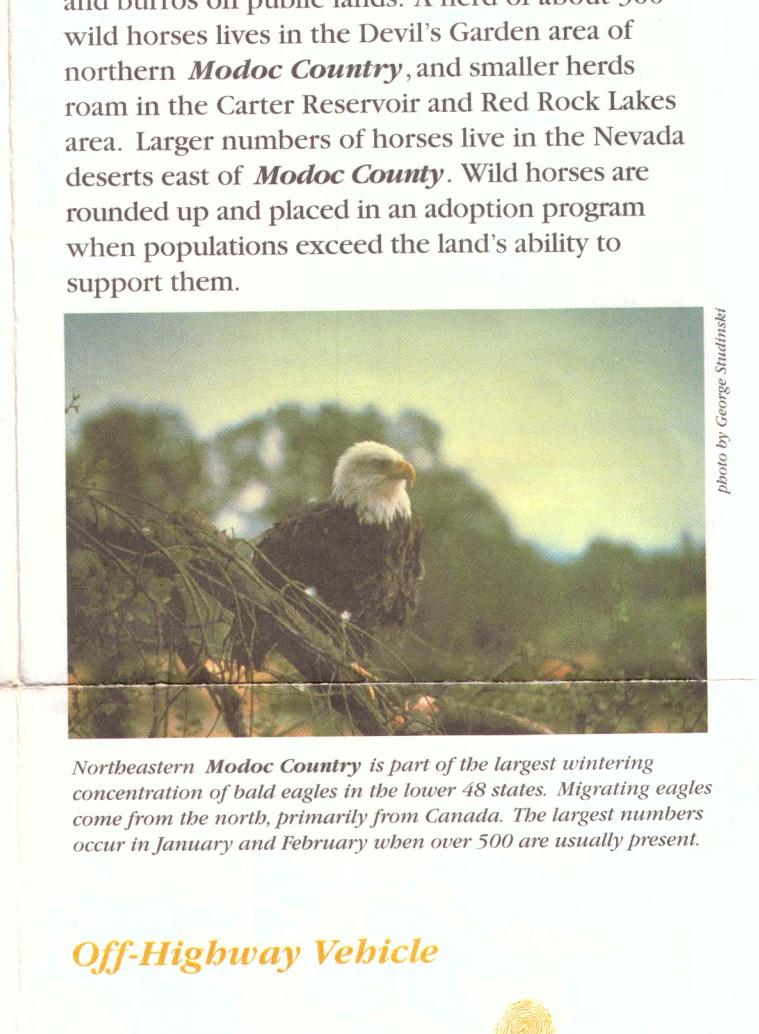
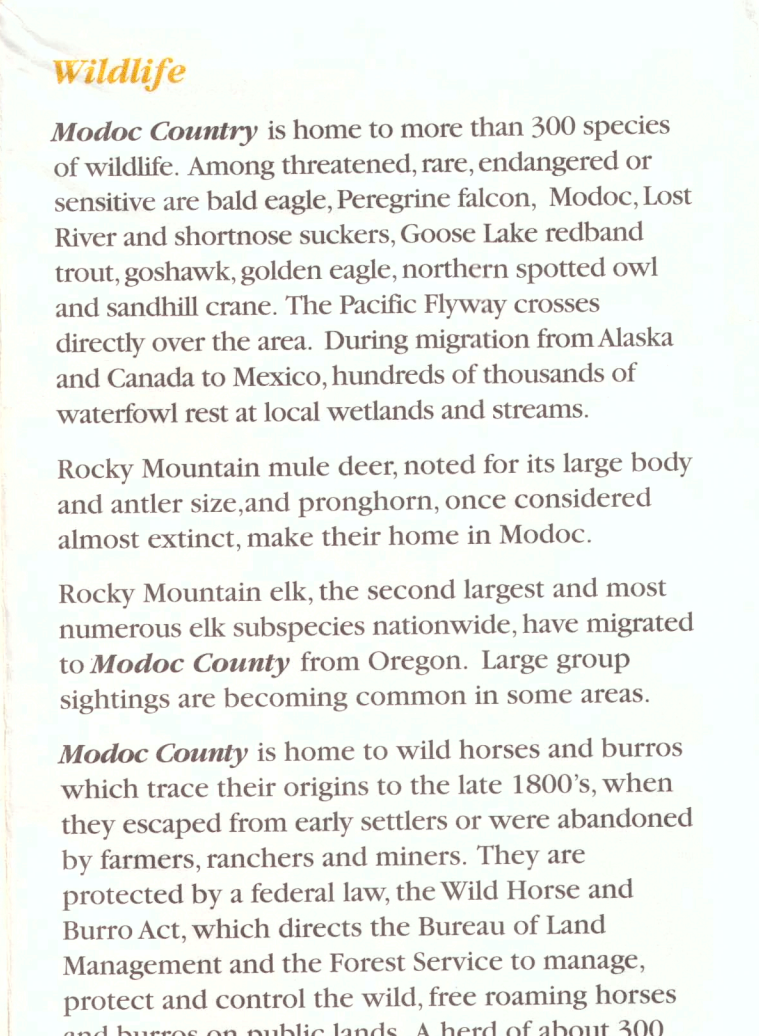
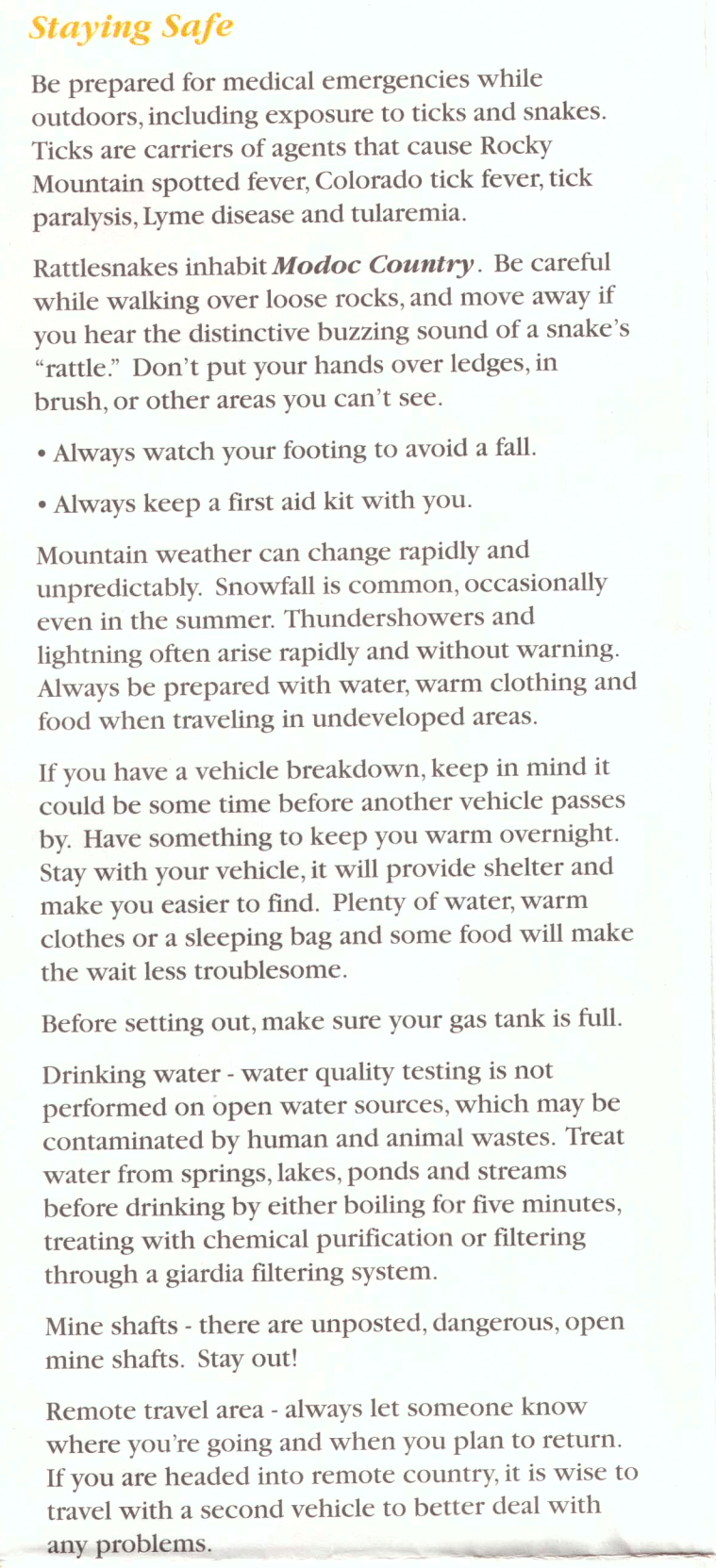
Closed Roads

These roads are closed to public use to protect the road surface, allow for revegetation, or to protect watersheds and wildlife habitat. Such closures are indicated by means of posted signs or gates or earth berms. Check with the appropriate office for road conditions and road closures.

Only certain roads in the Medicine Lake Highlands area are open. Roads open to travel are posted by triangular shaped signs with green arrows on white backgrounds. All other roads within the Northeast Siskiyou Coordinated Road Management Area are closed to all vehicular traffic during the periods posted.

The United States Departments of Agriculture and Interior prohibit discrimination in their programs on the basis of race, color, national origin, sex, religion, age, disability, political beliefs, and marital or familial status. Civil penalties may apply to all programs. Persons with disabilities who require alternative means for communication of program information (Braille, large print, audiotape, etc.) should contact USDA's TARGET Center at 202-726-2600 (voice and TDD).

If file a complaint, write the Secretary of Agriculture, US Department of Agriculture, Washington DC 20250, or call 1-800-245-6100 (voice) or 202-726-1212 (TDD), or Secretary of the Interior, Department of the Interior, Washington, DC 20240-0001. USDA/USDI are equal employment opportunity employers.



The United States Departments of Agriculture and Interior prohibit discrimination in their programs on the basis of race, color, national origin, sex, religion, age, disability, political beliefs, and marital or familial status. Civil penalties may apply to all programs. Persons with disabilities who require alternative means for communication of program information (Braille, large print, audiotape, etc.) should contact USDA's TARGET Center at 202-726-2600 (voice and TDD).

