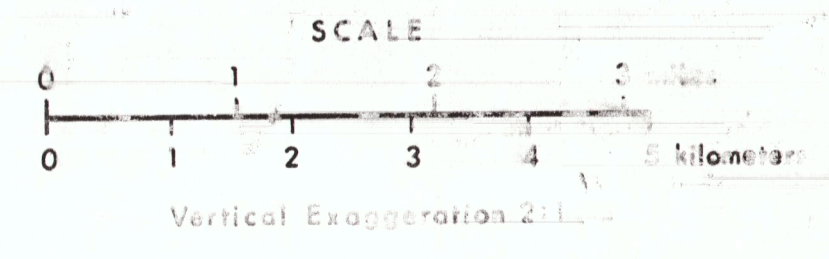
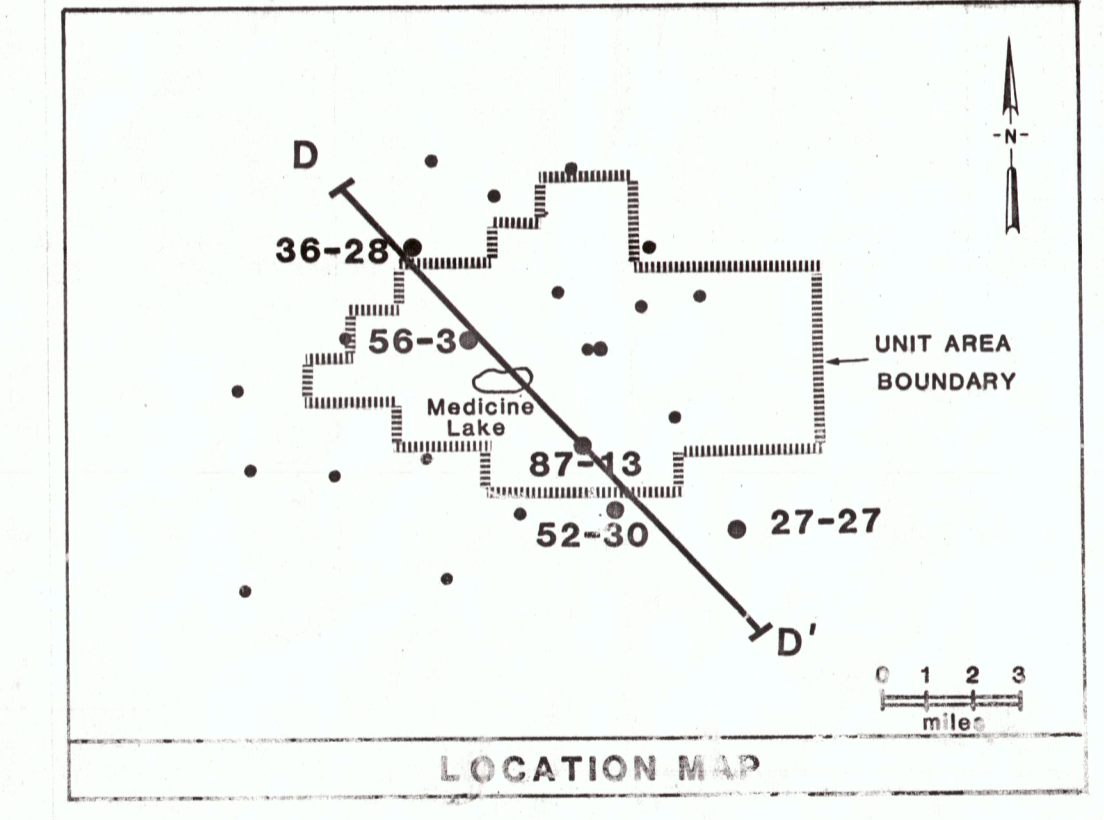
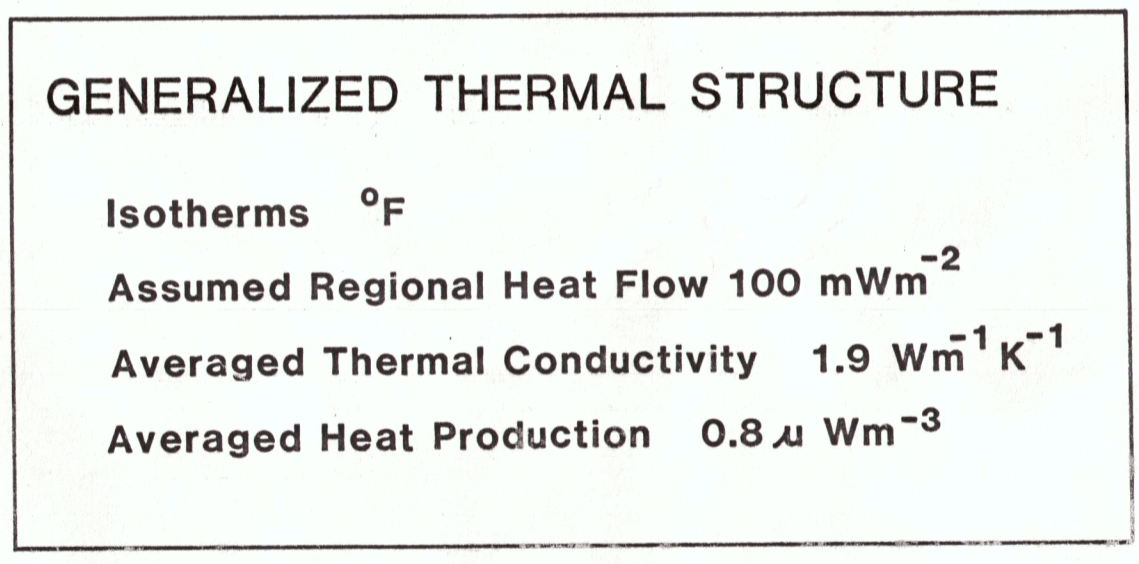
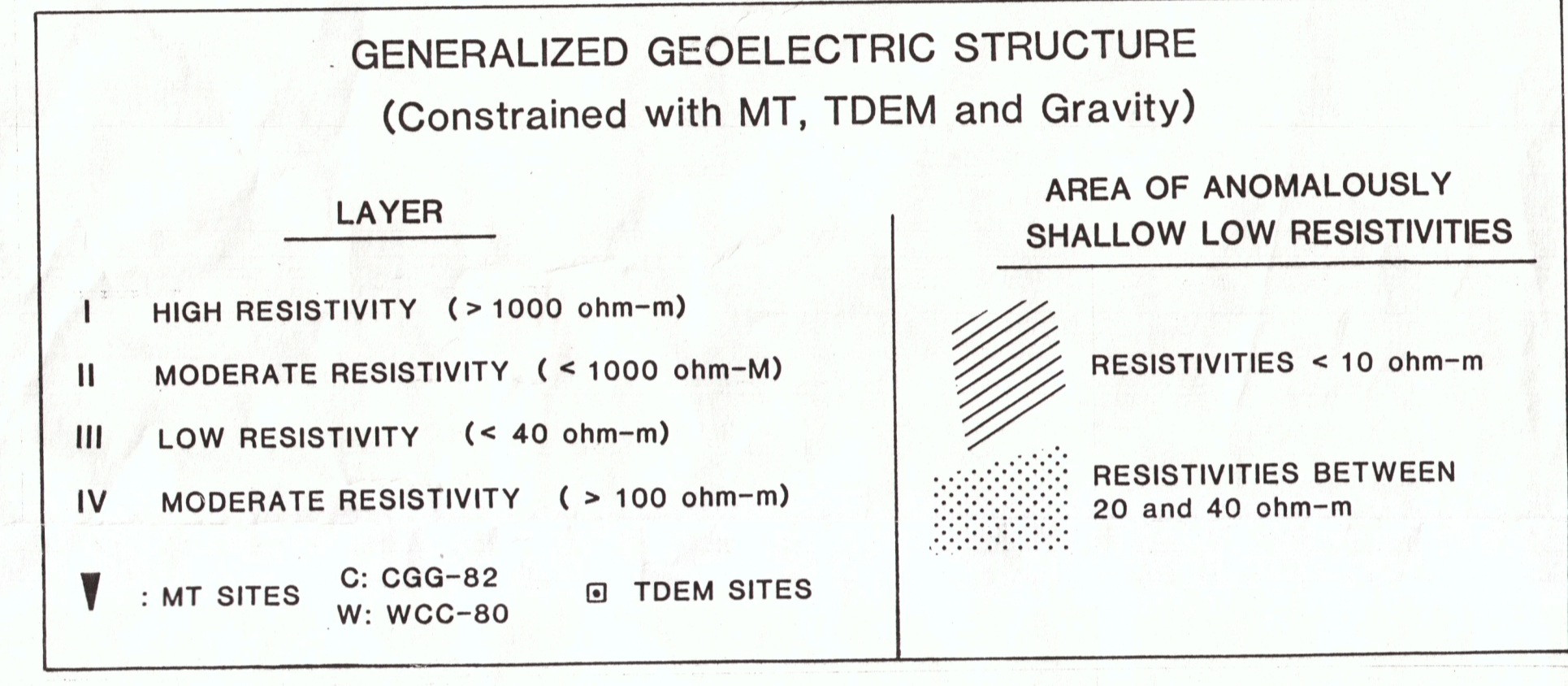
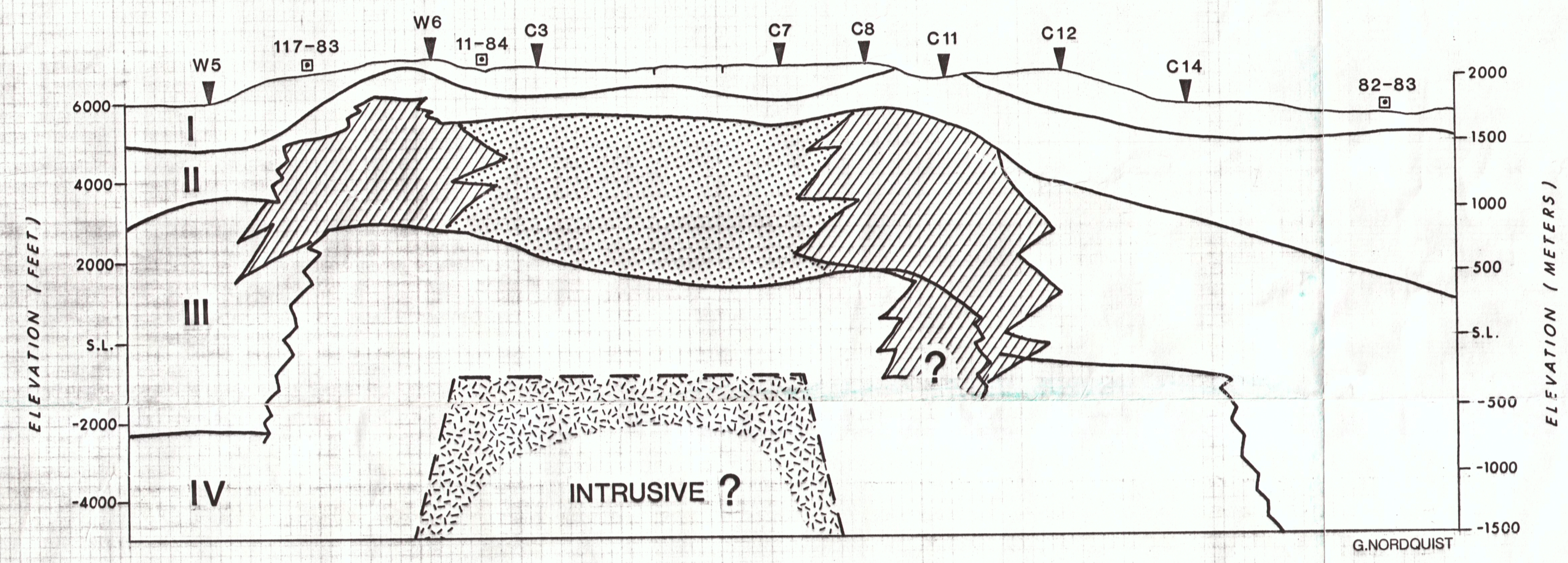
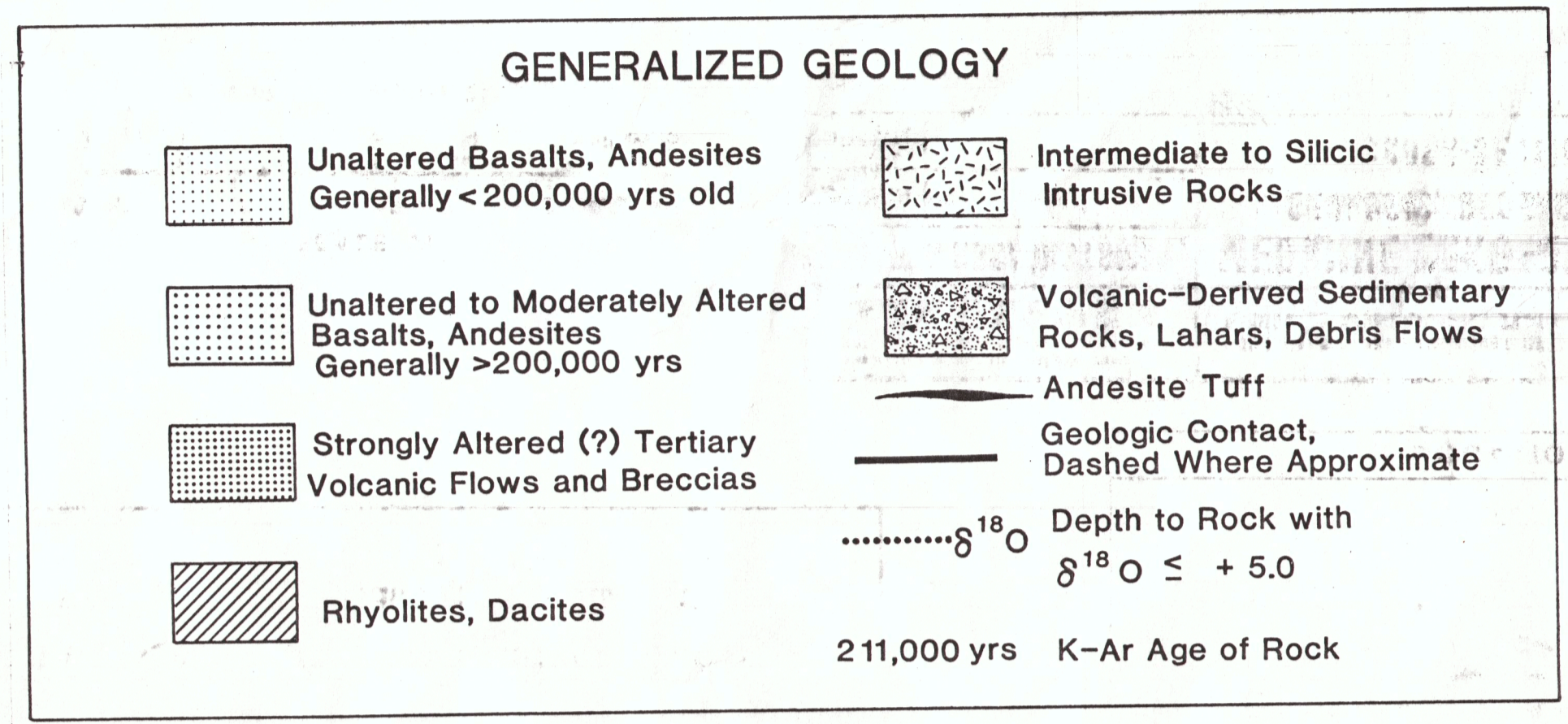
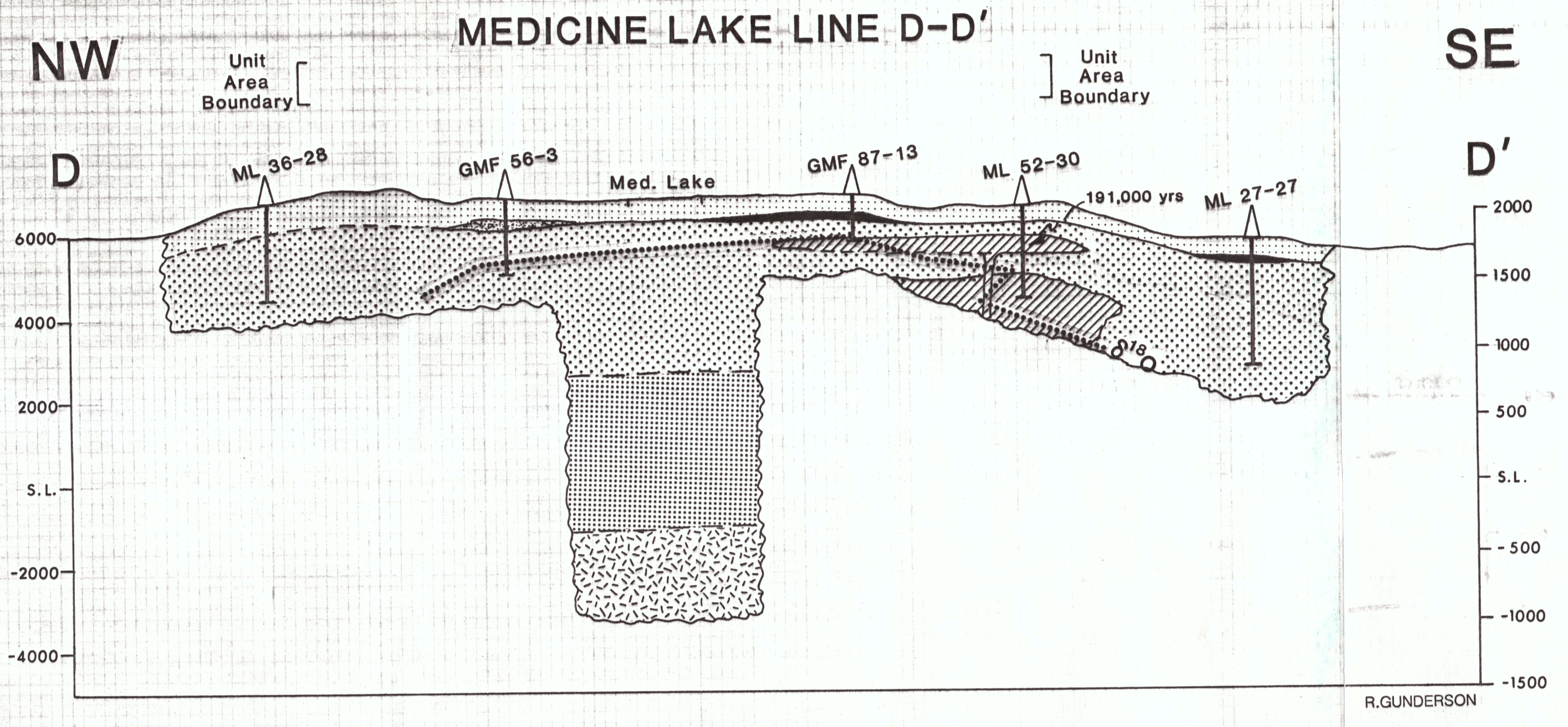


REVISIONS				
ZONE	REV	DESCRIPTION	DATE	BY APP'D



**UNION 76** UNION OIL COMPANY - GEOTHERMAL DIVISION

SAN A ROSA DISTRICT MEDICINE LAKE - GLASS MOUNTAIN UNIT

DESIGN AS: GEOLOGIC, GEOELECTRIC, AND THERMAL

DRAWN: CROSS-SECTION LINE D-D'

CHECK: SIZE AFE NO. DWG NO. 01 ATG 46 REV