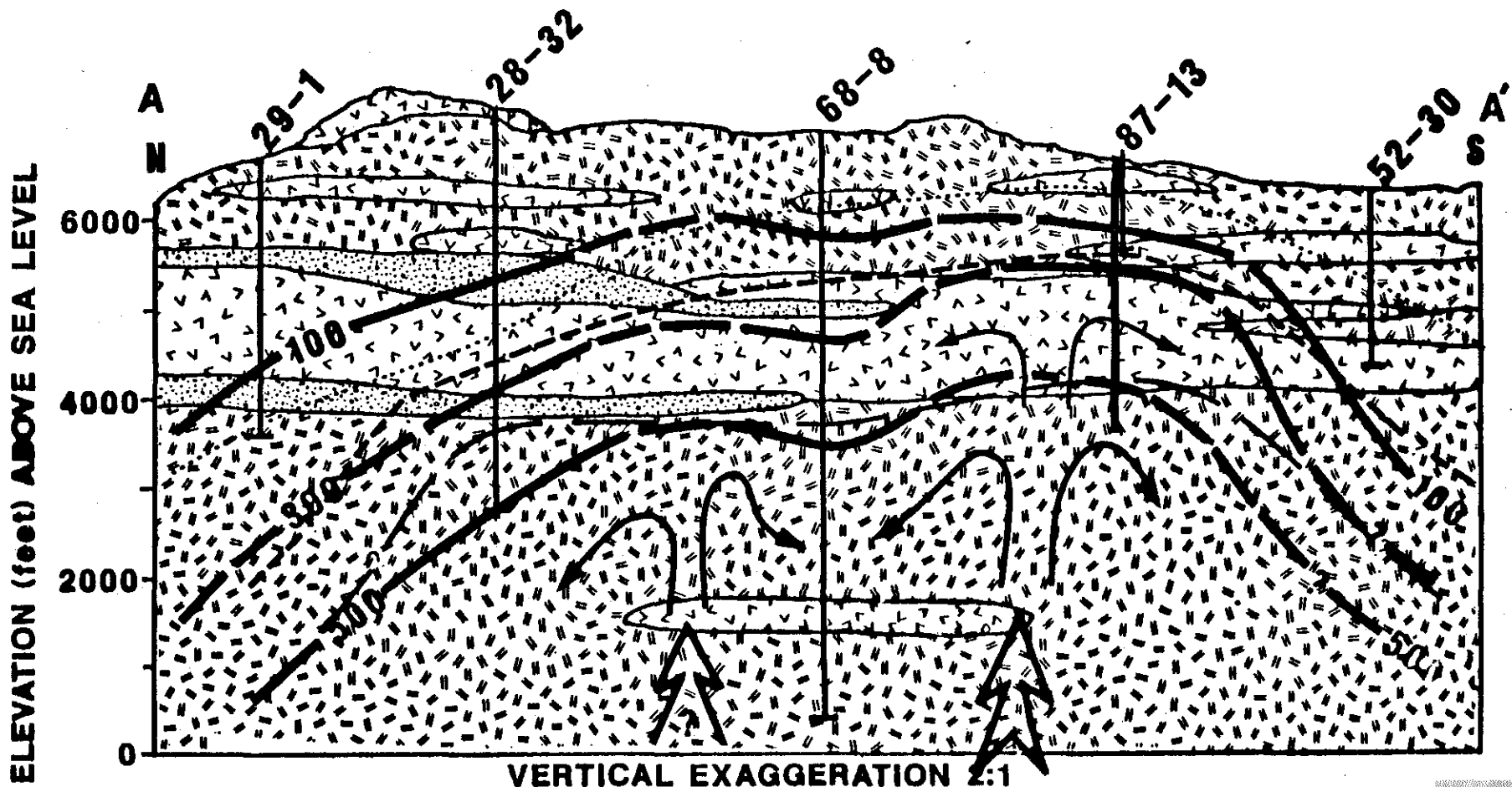


GLASS MOUNTAIN UNIT

Medicine Lake Basin



 RHYOLITES & DACITES

 BASALTS & ANDESITES

 PUMACEOUS TUFFS

 Temp °F

ALTERATION ZONES

 ZEOLITE-SMECTITE

 ARGILLIC

 PROPYLITIC

Alfredson Basin section