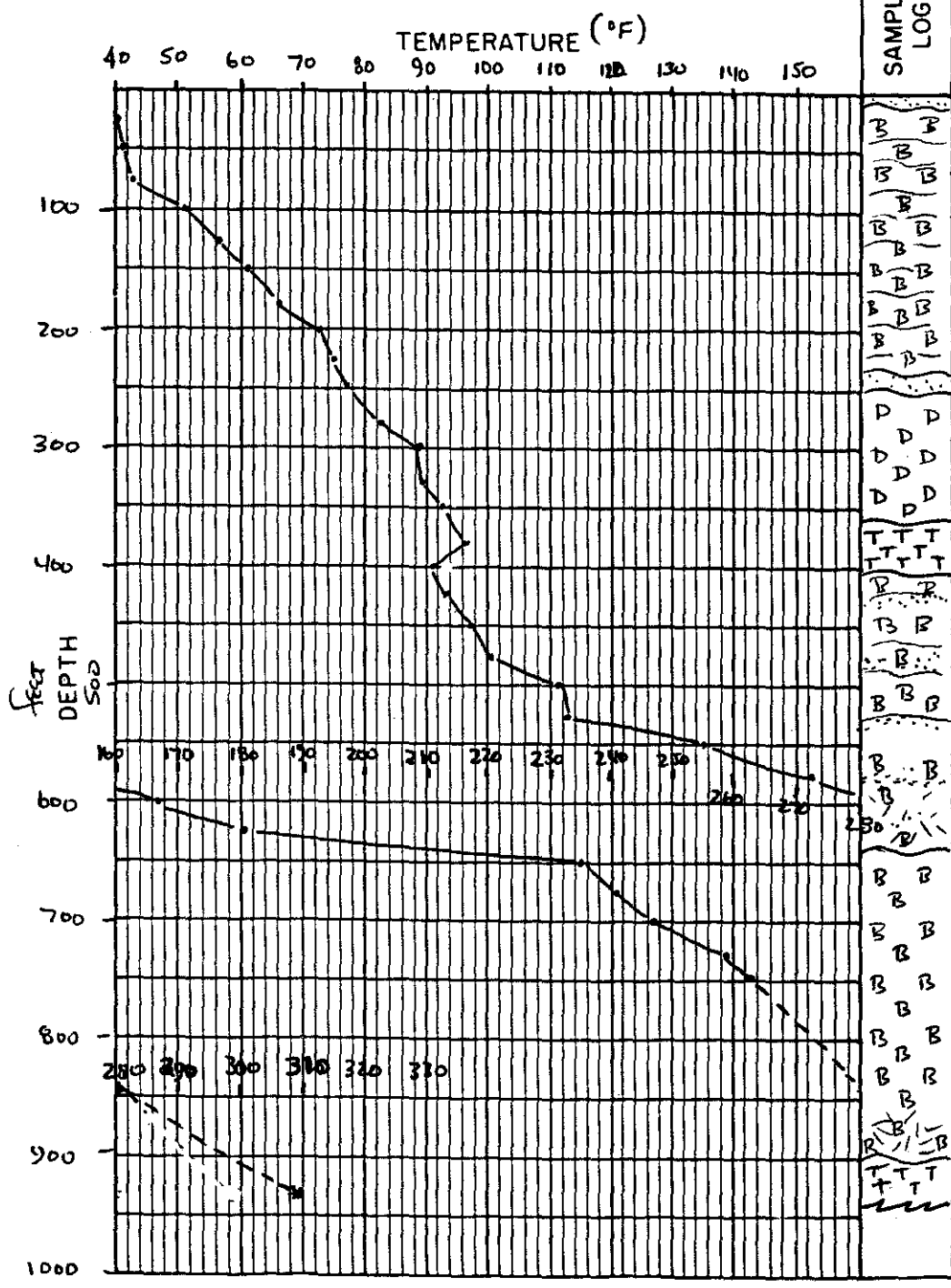


TEMPERATURE LOGS

# UNION GEOTHERMAL DIVISION GRADIENT HOLE SURVEY

Sept. 28, 82  
SPUD DATE  
Oct 5, 82  
COMPLETION DATE

Prospect : GLASS Mtn FED Location : T. 43N R. 3E Sec. 13  
 Hole No. : 87-13 (ML-3-82)  
 T.D. : 918' Elevation : ~6700' SISKIYOU CA.  
COUNTY STATE  
 Gradient : 98.88 F %/100 ft. Interval : 550 - 650 ft.  
 Temp. : 234.79 ° F at 650 ft.  
 BH Gradient : 27.69 F %/100 ft. Interval : 650 - 918 ft.  
 Max. Temp. : 309 ° F at 918' ft.



SAMPLE LOG		DATE OF SURVEY	Nov 3 82
		TIME SINCE COMPLETION	29 days
DEPTH	TEMP.	DEPTH	TEMP.
25	40.29	525	112.12
50	41.97	550	135.91
75	42.81	575	152.15
100	51.73	600	166.35
125	56.23	625	180.67
150	61.12	650	234.79
175	66.06	675	246.26
200	72.55	700	246.72
225	74.95	725	259.25
250	76.84	750	266.55
275	82.17	775	*
300	88.54	800	*
325	89.71	825	*
350	93.60	850	*
375	96.08	875	*
400	91.44	900	*
425	93.97	918	309
450	97.34	950	
475	100.69	975	
500	111.16	1000	

MRT : 309°F @ 918'

Remarks :  
 \* probe calibrated to 264.9° (128.99°C). BHT recorded with max. reading therm.

Drig. Contractor : TOMTO  
 Data by : Hausladen-Johnson

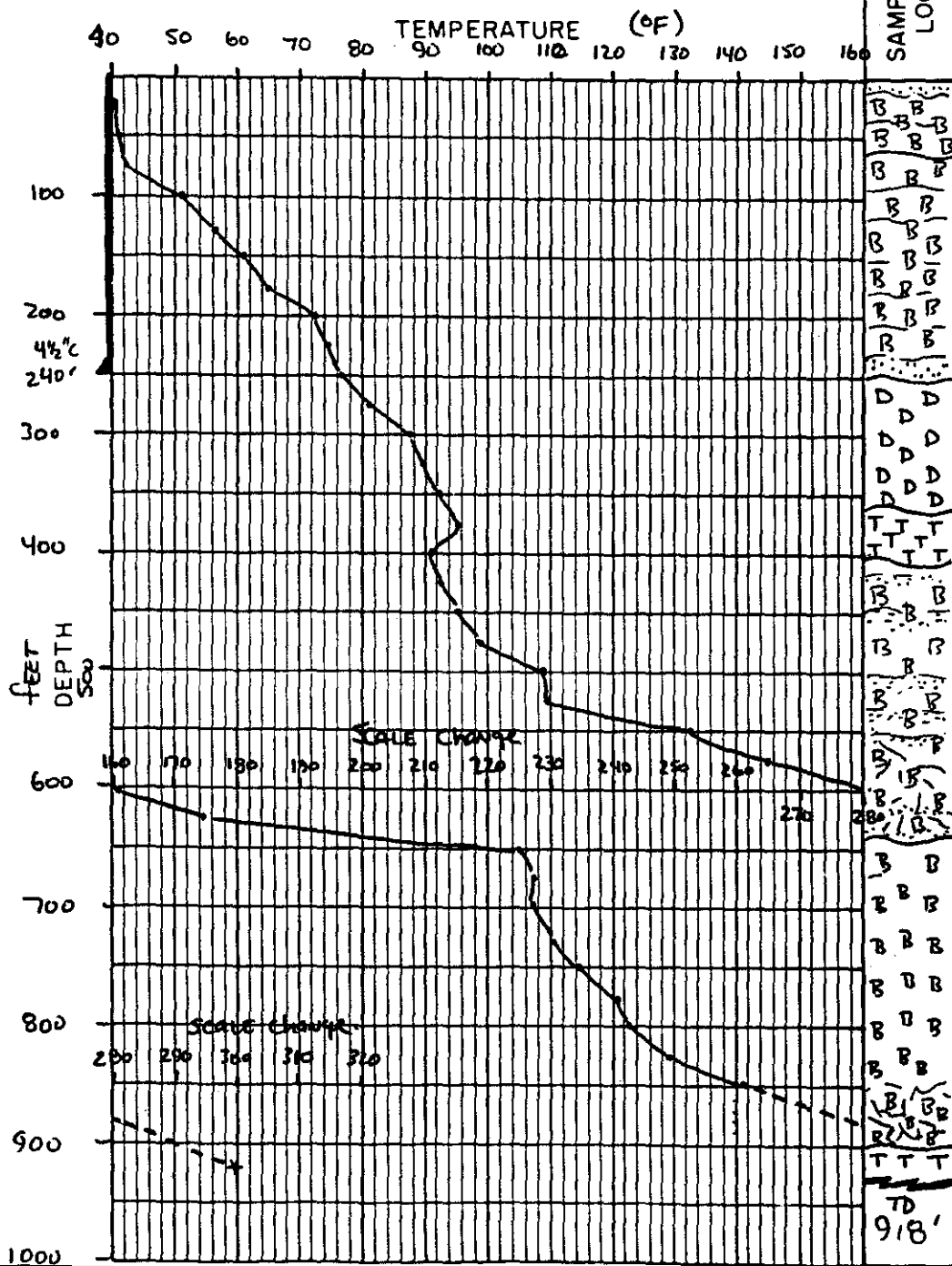
# UNION GEOTHERMAL DIVISION GRADIENT HOLE SURVEY

Sept 29, 82  
SPUD DATE  
Oct 5, 82  
COMPLETION DATE

Prospect : GLASS MTN FED. Location : T. 43N R. 3E Sec. 13  
 Hole No. : 87-13 (ML-3-82)  
 T.D. : 918' Elevation : ~6700' SISKIYOU CA.  
COUNTY STATE

Gradient : 92.8 F %/100 ft. Interval : 525 - 650 ft.  
 Temp. : 225 ° F at 650 ft.

BH Gradient : 50.8 F %/100 ft. Interval : 825 - 850 ft.  
 Max. Temp. : ~300 ° F at 918' ft.



SAMPLE LOG		DATE OF SURVEY	TIME SINCE COMPLETION
		Oct 18 82	13 days
DEPTH	TEMP.	DEPTH	TEMP.
25	40.25	525	109.14
50	41.74	550	133.30
75	42.66	575	145.80
100	51.62	600	161.49
125	56.24	625	174.50
150	60.67	650	225.18
175	65.55	675	227.6
200	72.14	700	227.6
225	74.31	725	230.2
250	76.35	750	234.3
275	81.63	775	240.1
300	87.58	800	242.0
325	89.64	825	249.1
350	92.60	850	261.8
375	95.30	875	
400	90.90	900	
425	92.98	928	~300
450	95.70	950	
475	98.74	975	
500	108.93	1000	

B = basalt flows D = dacite flows  
 T = welded Tuff C = cinders/pumice  
 F = fractures MRT =

Remarks :  
 (X) probe calibrated to 128.  
 (264.18 °F). Then, not placed on probe during measurement. Projected Temp @ 918' ~300 °F (149 °C)  
 10-20-82 BIT = 302 °

Orig. Contractor : TONTO  
 Data by : Hausladen-Johnson-St