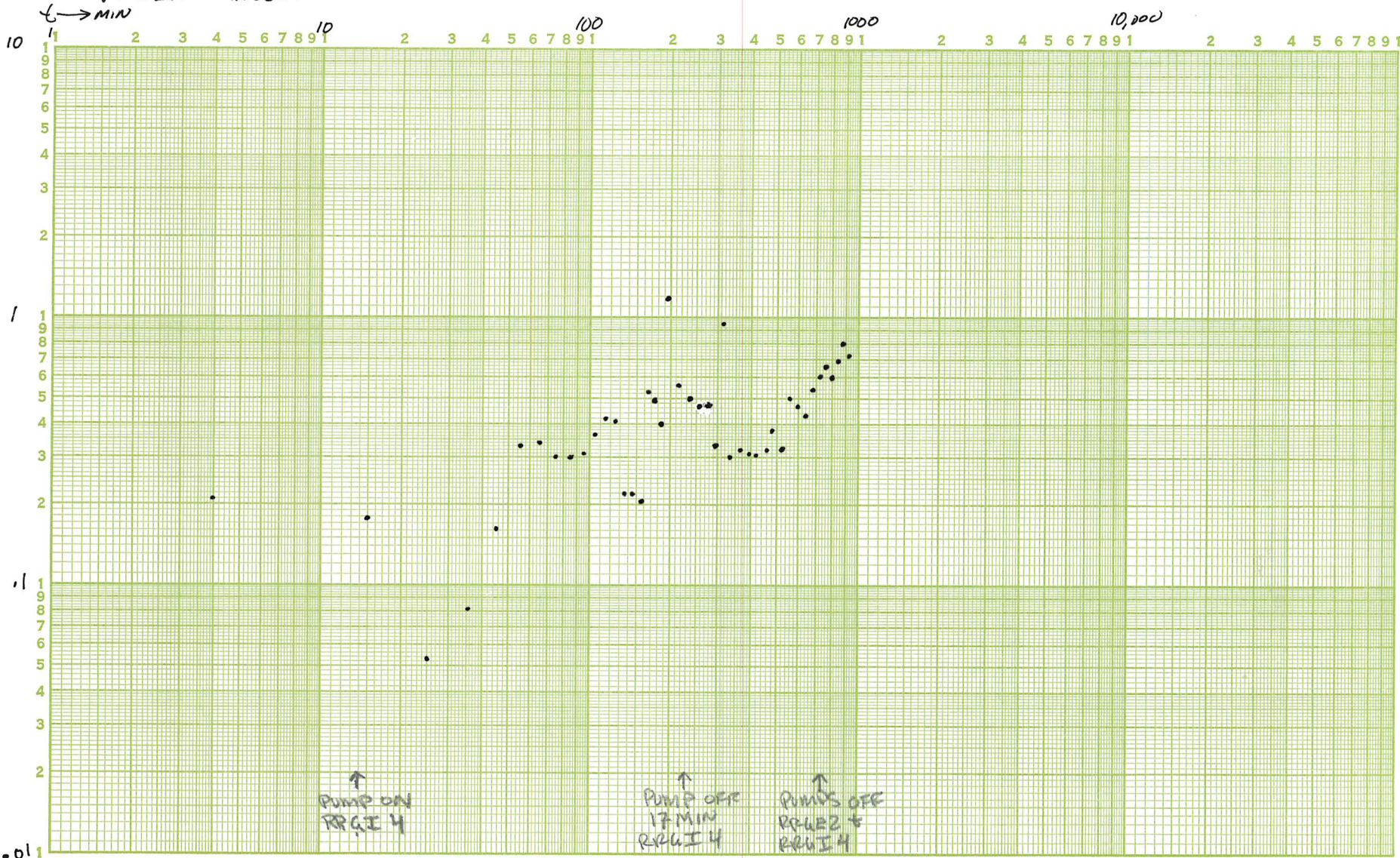


WELLHEAD PRESSURE CHANGE BRGE I 10-11 MAY 1978

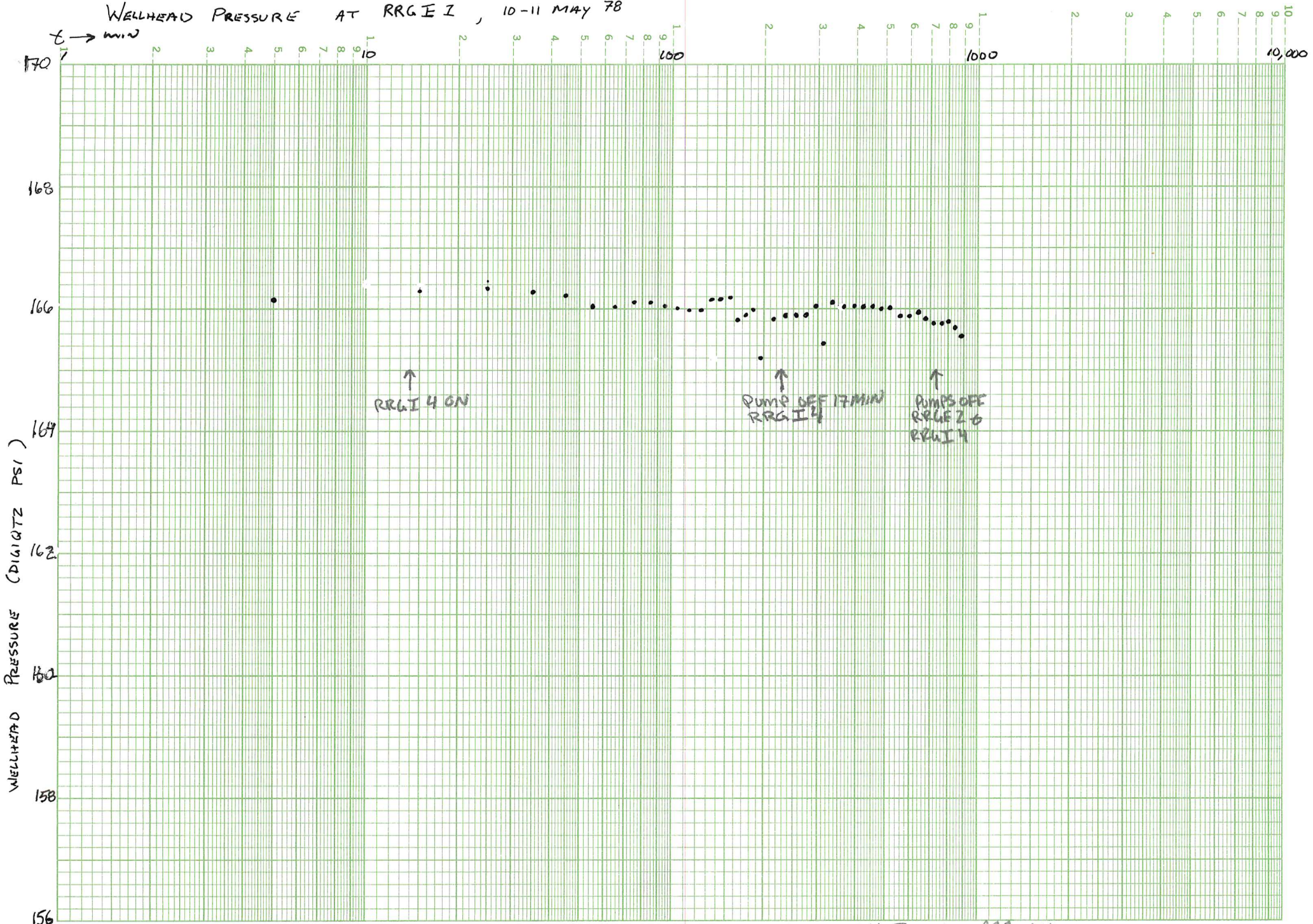
RRGE 2 PUMPING 800 GPM
 RRGI 4 INJECTION 800 GPM



RRGE 2 ON AT 1125
 RRGI 4 ON AT 1139
 RRGI 4 & RRGE 2 OFF AT 2345 10 MAY 78

DRAWDOWN CHANGE IN WELL HEAD PRESSURE (DIAGNOSTIC PSI)

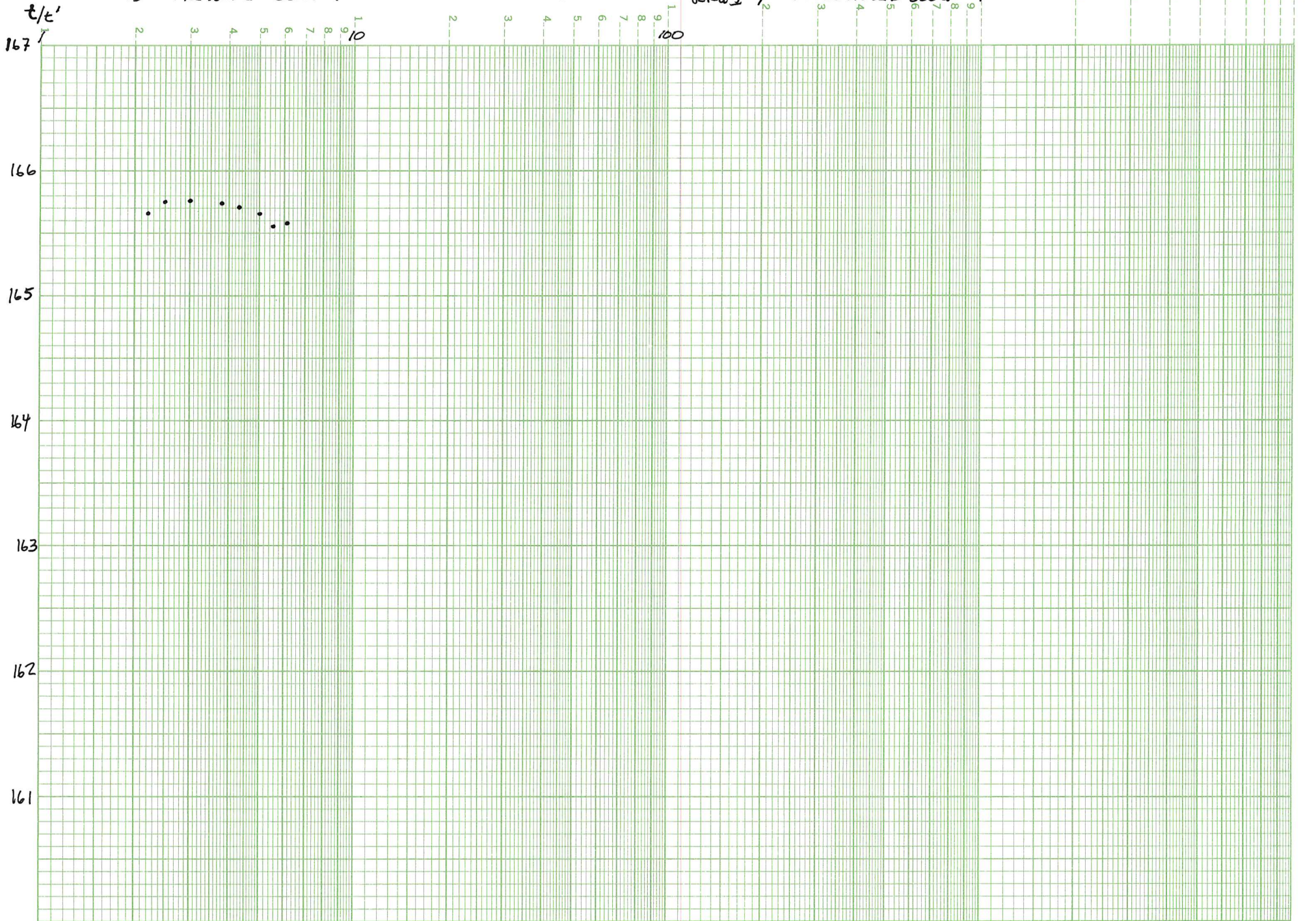
WELLHEAD PRESSURE AT RRGE I, 10-11 MAY 78



RRGE 2 STARTED PUMPING AT 1125
RRGI 4 1139
RRGE 2 & RRGI 4 OFF AT 1235 10 MAY 78

WELLHEAD PRESSURE BUILDUP AT RRGE I 11 MAY 78

RRGE 2 PUMPED 800 GPM
RRGI 4 INJECTED 800 GPM



RRGE 2 & RRGI 4 ON FDR APPROX. 12 HRS
PUMPS OFF AT 2345 ON 10 MAY 78