

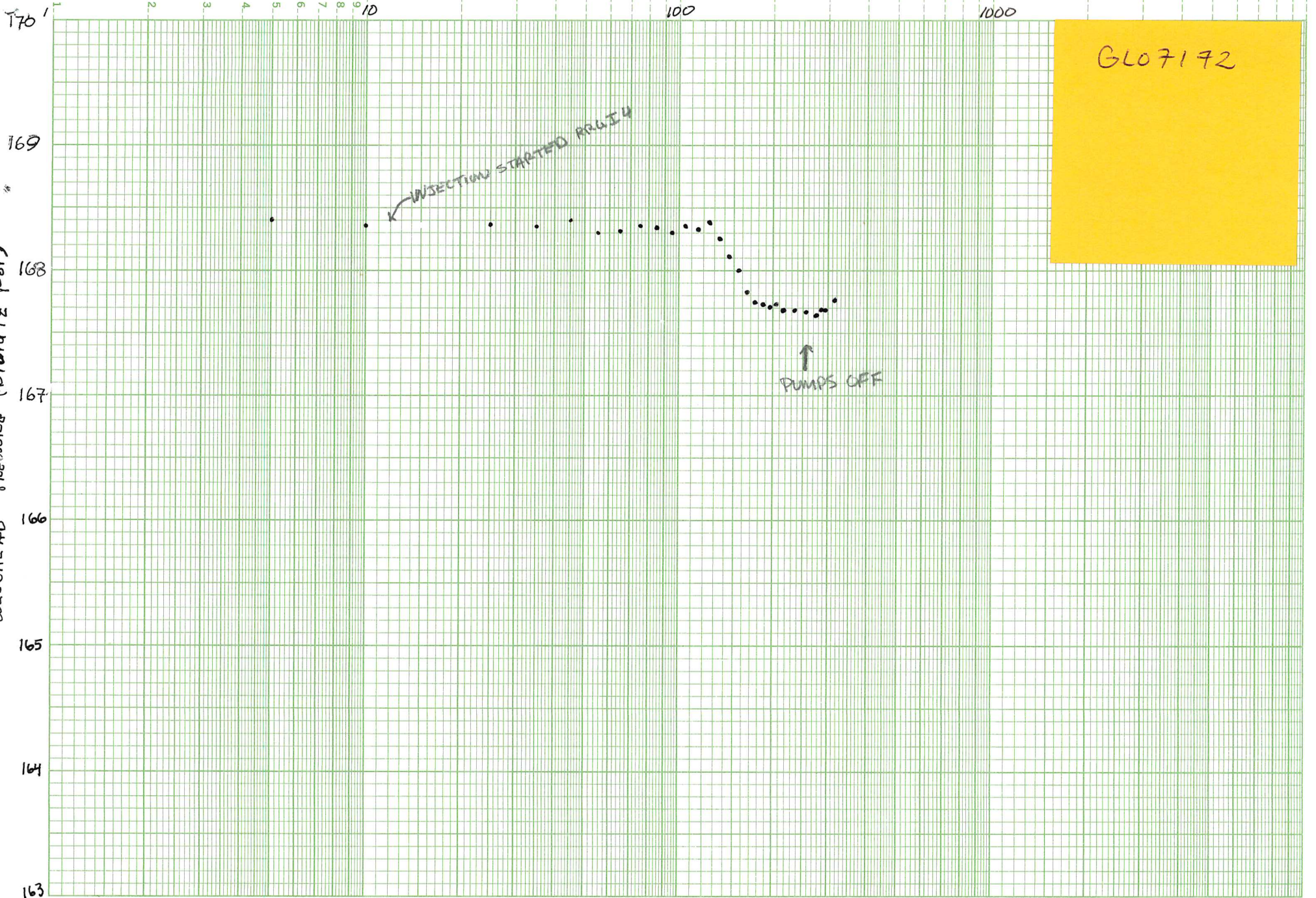
WELLHEAD PRESSURE RRGE I

9 MAY 78

RRGE 2 PRODUCING, RRGE I 4 INJECTING

800 GPM

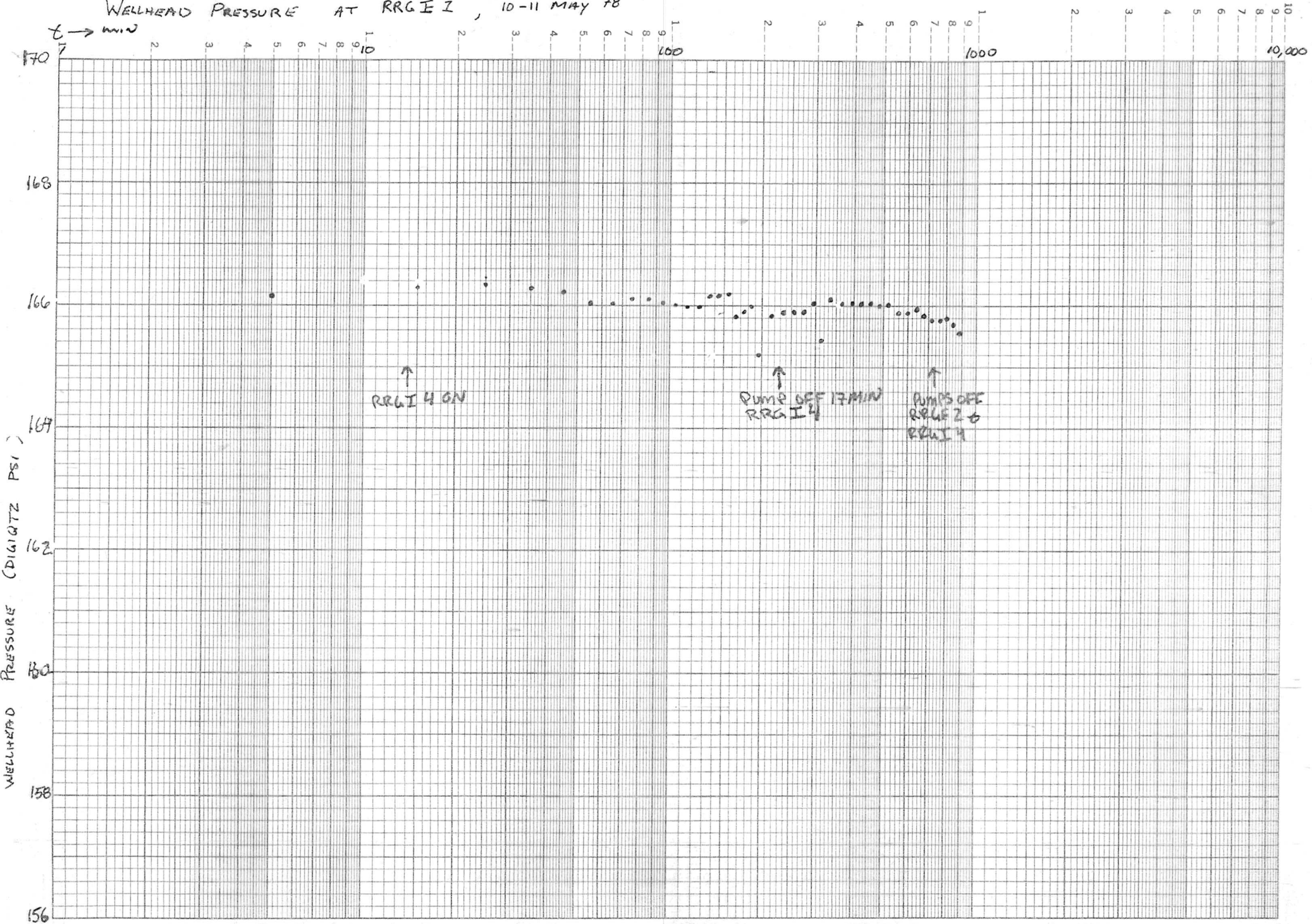
t → min



GLO 7172

RRGE 2 PUMPING 800 GPM
RRGI 4 INJECTION 400 GPM

WELLHEAD PRESSURE AT RRGE I, 10-11 MAY 78



RRGE 2 STARTED PUMPING AT 1125