

RRGE-1 OBS WELL DRAWDOWN

01L07317

RRGE-2 PUMPING 400 GPM (??)

$$T = Kh \left( \frac{\delta}{u} \right) (.3284147) = (230 \text{ d}) \left( \frac{57.31 \frac{\text{#}}{\text{ft}^3}}{.18 \text{ cp}} \right) (.3284147)$$

$$T = 24000 \text{ gpd/ft}$$

$$S^* = \frac{2.25 T t_0}{r^2} = \frac{2.25 (24,000 \text{ gpd/ft}) (20 \text{ hrs}) (0.1337 \frac{\text{ft}^3}{\text{g}})}{4000 \text{ ft}^2 \frac{24 \text{ hrs}}{\text{d}}}$$

$$S^* = 3.8 \times 10^{-4}$$

$$t_{SL} = \frac{r^2 S^*}{4T^2} \quad w/u = 0.01$$

$$t_{SL} = \frac{(4000 \text{ ft})^2 (3.8 \times 10^{-4}) (1440 \text{ min})}{4 (24,000 \text{ gpd/ft}) (0.01) (0.1337 \frac{\text{ft}^3}{\text{g}})} = 68200 \text{ min} = 47 \text{ days}$$

~~47 days = 1100 hrs~~

$$t_{SL} = \frac{2.7 \times 10^5 r^2 S^*}{T} = \frac{2.7 \times 10^5 (4000 \text{ ft})^2 (3.8 \times 10^{-4})}{24,000 \text{ gpd/ft}}$$

$$t_{SL} = 68400 \text{ min} =$$

In preparing the graph of pressure history presented in Plate 2, appropriate adjustments were made in the aforesaid shifts in order to establish overall continuity.

The surface pressure gage was used throughout the period of test from September 20 to October 30, 1975. However, continuous recording equipment was not installed until September 30 and hence only sparse data could be collected during the first ten days of the test. The pressure transient data at RRGE 1, relating to the last ten days of the production period and the entire buildup to data, were collected exclusively from the surface instrument.

As seen from Plate 2, both the downhole and the surface data show the effect of earth tides superposed on the pressure transient caused by the producing well. For a proper interpretation of the interference effects, it was necessary to filter out the effects of the earth tides. In as much as the correlation between the water pressure data and the computed variation in gravity is extremely good (Plate 2), it was possible to eliminate earth tide effects from the fluid pressure data by simply considering (for purposes of interpretation) only the pressure data relating to those instants of time when the computed gravity variation was zero. This procedure was followed in carrying out the interpretation of the drawdown and the buildup data described below.

The interpretation of the drawdown data collected from the downhole instrument at a depth of 1000 feet is presented in Figs. 12 and 13. The log-log plot shown in Fig. 12 shows that the data collected closely match the Theis' type curve during the first 70 hours of drawdown history, suggesting the following parameters for the large portion of the reservoir between the wells:  $kH =$

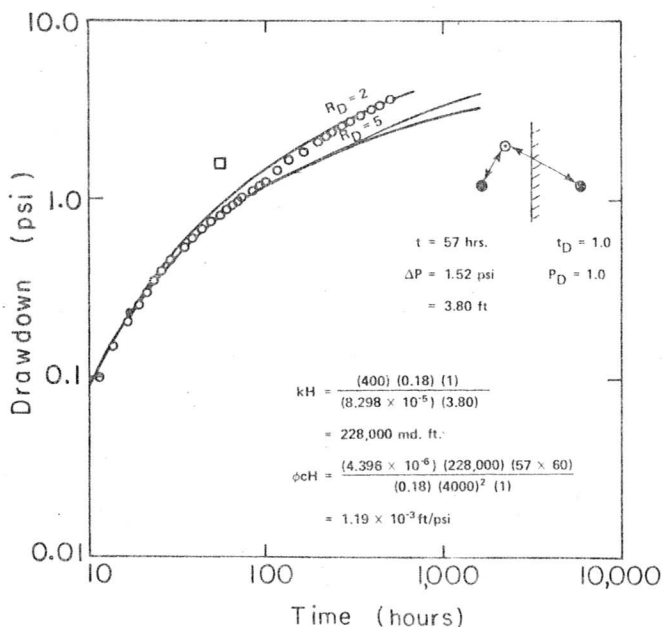
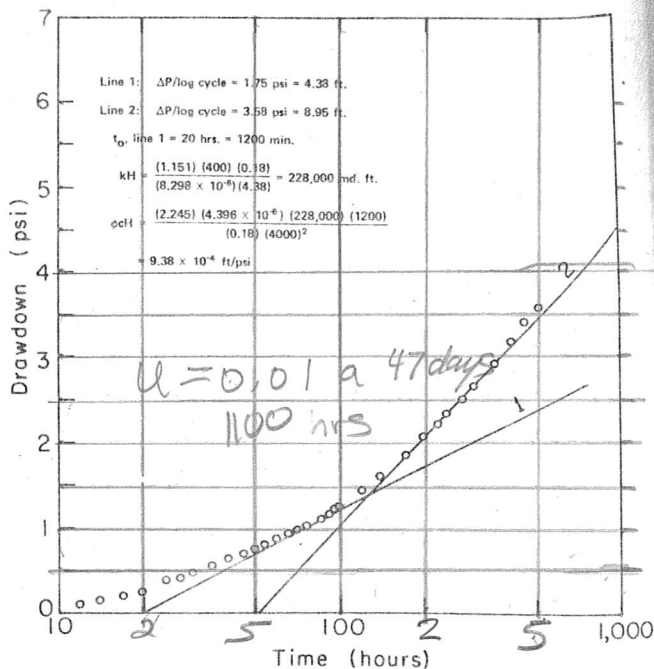


Fig. 12: Long-term interference test: Log-log plot of drawdown versus time for RRGE 1.



\*XBL 769-4032

Fig. 13: Long-term interference test: Semi-log plot of drawdown versus time for RRGE 1.

228,000 millidarcy feet and  $\phi cH = 1.19 \times 10^{-3}$  ft/psi. After about 70 hours, the observed drawdowns gradually depart from the type curve of Theis, indicating the presence of a barrier boundary. It is further seen from Fig. 12 that the data points roughly fall between the lines labeled  $2R_D$  and  $5R_D$  suggesting that the barrier boundary could be treated effectively equivalent to an "image well" located at a distance of approximately  $3R_D$  from RRGE 1, where  $R_D = 4000$  ft is the distance between the producing well RRGE 2 and the observation well RRGE 1. Theoretically, the barrier boundary should coincide with the perpendicular bisector between the producing well RRGE 2 and the image well. However, since we only have a two-well system, it is impossible to determine the orientation of the image well with reference to RRGE 1 and hence it is not possible to locate the barrier boundary accurately.

A semi-log plot of the drawdown data is presented in Fig. 13. The prominent break in the slope of the straight line at about 130 hours is also indicative of the effects of a barrier boundary. The early drawdown data in Fig. 9 suggest the following parameters for the reservoir:  $kH = 228,000$  millidarcy feet,  $\phi cH = 9.38 \times 10^{-4}$  ft/psi. Calculations based on the slope change after 130 hours suggest that the barrier boundary is equivalent to an image well located about 11,000 feet from RRGE 1 in an unknown direction.

As mentioned earlier, the pressure buildup data was collected exclusively from the surface instrument. The buildup data is interpreted graphically in Figs. 14 and 15. The pressure buildup values used in the interpretation are corrected buildup values, arrived at after removing the ef

fects of the production well and its image from the actually observed values of buildup. The components of drawdown due to the production well and its image were in turn evaluated by extrapolating the drawdown curve into the buildup period.

A comparison of Figs. 14 and 12 and Figs. 15 and 13 indicate reasonable agreement in the reservoir behavior observed during production and buildup. In addition to confirming the presence of a barrier boundary, the early drawdown data from Fig. 14 suggest the following reservoir parameters:  $kH = 192,800$  millidarcy feet;  $\phi cH = 1.06 \times 10^{-3}$  ft/psi. Similarly, the semi-log plot in Fig. 15 indicates, for the reservoir, a  $kH$  value of 210,000 millidarcy feet and a  $\phi cH$  value of  $8.20 \times 10^{-4}$  ft/psi. Calculations based on the slope change seen in Fig. 11 indicate that the barrier boundary is effectively equivalent to an image well located about 8,500 feet away from RRGE 1.

(3) Short term production test, RRGE 1: The short term test on RRGE 1 was conducted between November 4 and November 7, 1975. After making observations on background reservoir pressure for about 18 hours, the well was flowed at an average discharge of 26.5 gpm for a period of 30 hours from 0845 hours on November 5 to 1445 hours on November 6, 1975. After shutting down flow, pressure buildup was monitored for approximately 19 hours. During the test, the downhole pressure instrument was positioned at a depth of 4700 feet within the well.

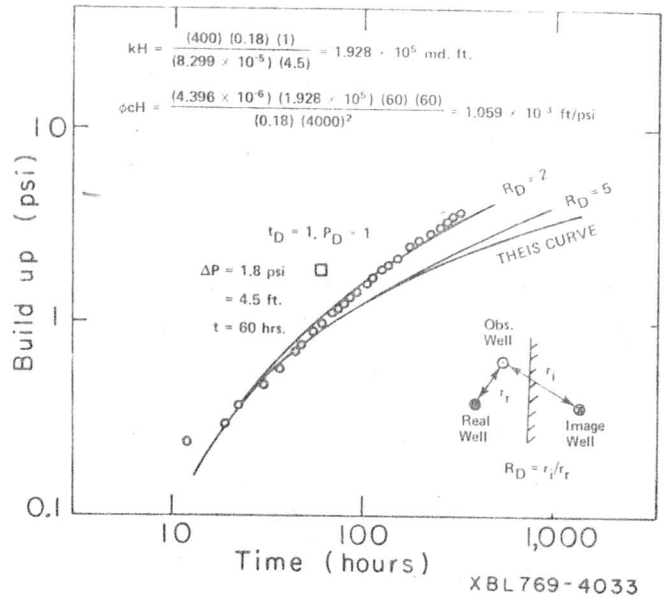


Fig. 14: Long-term interference test: Log-log plot of build up versus time for RRGE 1.

The pressure data collected during the test are summarized in Appendix 3 and the time history of pressure change is graphically presented in Plate 3. The maximum pressure drawdown at the end of 30 hours of production was approximately 1.1 psi.

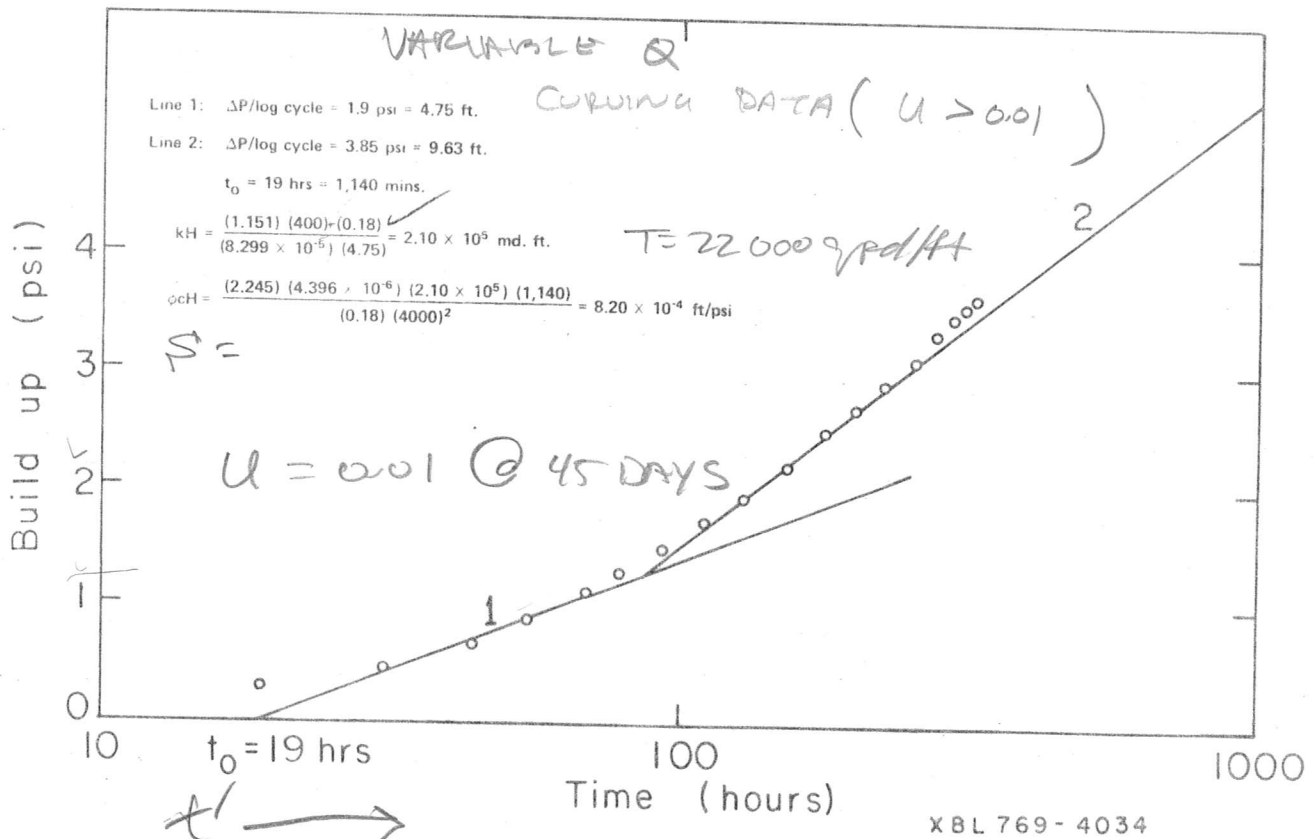


Fig. 15: Long-term interference test: Semi-log plot of build up versus time for RRGE 1.

RRGE 1 INTERFERENCE TEST DATA, RAFT RIVER VALLEY GEOTHERMAL FIELD, IDAHO

DATE / /	TIME / /	FLOW RATE / (GPM) /	DONNHOLE / PRESSURE / (PSIA) /	WELL HEAD / PRESSURE / (PSIA) /	REMARKS
9/14/75	1720		575.872	150.465	
9/14/75	1730		575.865		
9/14/75	1740		575.860		
9/14/75	1750		575.862		
9/14/75	1800		575.855		
9/14/75	1810		575.854		
9/14/75	1820		575.846		
9/14/75	1830		575.845		
9/14/75	1840		575.843		
9/14/75	1850		575.833		
9/14/75	1900		575.820		
9/14/75	1910		575.829		
9/14/75	1920		575.825		PRODUCTION STARTED AT
9/14/75	1930		575.822		RRGE 2
9/14/75	2000	916	575.815	.354	
9/14/75	2030	916	575.783		
9/14/75	2100	916	575.752		
9/14/75	2130	916	575.729		
9/14/75	2200	916	575.706		
9/14/75	2230	916	575.713		
9/14/75	2300	916	575.683		AT 2310 HRS. LEAKAGE IN
9/14/75	2300		.683		FLANGE STOPPED (HP).
9/14/75	2330	916	575.712	.232	
9/15/75	0000	916	575.685		
9/15/75	0030	916	575.659		
9/15/75	0100	916	575.646		
9/15/75	0130	916	575.639		
9/15/75	0200	916	575.622		
9/15/75	0230	916	575.608		
9/15/75	0300	916	575.593		
9/15/75	0330	916	575.581		
9/15/75	0400	916	575.565		
9/15/75	0430	916	575.545		
9/15/75	0500	916	575.518		
9/15/75	0530	916	575.493		
9/15/75	0600	916	575.471		
9/15/75	0630	916	575.439		
9/15/75	0700	916	575.480		
9/15/75	0730	808	575.387	149.951	
9/15/75	0800	808	575.354		
9/15/75	0830	808	575.337		
9/15/75	0900	808	575.308		
9/15/75	0930	808	575.283		
9/15/75	1000	808	575.263		
9/15/75	1030	808	575.249		
9/15/75	1100	808	575.236		
9/15/75	1130	808	575.224	.849	
9/15/75	1200	836	575.216		
9/15/75	1230	836	575.212		
9/15/75	1300	836	575.210		
9/15/75	1330	836	575.203		
9/15/75	1400	836	575.200		
9/15/75	1430	836	575.201		
9/15/75	1500	836	575.210		
9/15/75	1530	808	575.208	149.892	
9/15/75	1600	808	575.206		
9/15/75	1630	808	575.206		
9/15/75	1700	808	575.195		
9/15/75	1730	808	575.186		
9/15/75	1800	808	575.172		
9/15/75	1830	808	575.155		
9/15/75	1900	808	575.145		
9/15/75	1930	808	575.127		
9/15/75	2000	458	575.086	.757	
9/15/75	2030	458	575.074		
9/15/75	2100	458	575.063		

DATE / /	TIME / /	FLOW RATE / (GPM) /	DONNHOLE / PRESSURE / (PSIA) /	WELL HEAD / PRESSURE / (PSIA) /	REMARKS
9/15/75	2130	458	575.036		
9/15/75	2200	458	575.024		
9/15/75	2230	458	575.017		
9/15/75	2300	458	575.		
9/15/75	2330	458	575.005		
9/16/75	0000	458	575.018	.681	
9/16/75	0030	458	575.006		
9/16/75	0100	458	575.011		
9/16/75	0130	458	575.002		
9/16/75	0200	458	575.001		
9/16/75	0230	458	575.005		
9/16/75	0300	458	575.010		
9/16/75	0330	458	575.014		
9/16/75	0400	458	575.009		
9/16/75	0430	458	574.985		
9/16/75	0500	458	574.986		
9/16/75	0530	458	574.972		
9/16/75	0600	458	574.956		
9/16/75	0630	458	574.932		
9/16/75	0700	458	574.906		
9/16/75	0730	458	574.890		
9/16/75	0800	453	574.861	.427	
9/16/75	0830	453	574.830		
9/16/75	0900	453	574.822		
9/16/75	0930	453	574.792		
9/16/75	1000	453	574.779		
9/16/75	1030	453	574.757	.368	
9/16/75	1100	453	574.747		
9/16/75	1130	453	574.734		
9/16/75	1200	453	574.737	.373	
9/16/75	1230	453	574.728		
9/16/75	1300	453	574.733	.449	
9/16/75	1330	453	574.733		
9/16/75	1400	453	574.732		
9/16/75	1430	453	574.746		
9/16/75	1500	453	574.751	.487	
9/16/75	1530	453	574.745		
9/16/75	1600	453	574.747	.492	
9/16/75	1630	453	574.752		
9/16/75	1700	447	574.759	149.465	
9/16/75	1730	447	574.754		
9/16/75	1800	447	574.732		
9/16/75	1830	447	574.730	.422	
9/16/75	1900	447	574.716		
9/16/75	1930	447	574.698		
9/16/75	2000	447	574.687		
9/16/75	2030	437	574.661	.314	
9/16/75	2100	437	574.642		
9/16/75	2130	437	574.628		
9/16/75	2200	442	574.614		
9/16/75	2230	442	574.602	.211	
9/16/75	2300	442	574.588		
9/16/75	2330	442	574.575	.146	
9/17/75	0000	442	574.562		
9/17/75	0030	442	574.577		
9/17/75	0100	442	574.580		
9/17/75	0130	442	574.587		
9/17/75	0200	442	574.584		
9/17/75	0230	442	574.587		
9/17/75	0300	442	574.590		
9/17/75	0330	442	574.588		
9/17/75	0400	442	574.591		
9/17/75	0430	442	574.594		
9/17/75	0500	442	574.588		
9/17/75	0530	442	574.584		
9/17/75	0600	442	574.562		
9/17/75	0630	442	574.559	.033	
9/17/75	0700	442	574.542		
9/17/75	0730	442	574.523		
9/17/75	0800	442	574.505	.049	

6 →  
0  
10

RRGE 1 INTERFERENCE TEST DATA, RAFT RIVER VALLEY GEOTHERMAL FIELD, IDAHO

DATE / TIME /	FLOW RATE / (GPM) /	DOWNHOLE / PRESSURE / (PSIA) /	WELL HEAD / PRESSURE / (PSIA) /	REMARKS	DATE / TIME /	FLOW RATE / (GPM) /	DOWNHOLE / PRESSURE / (PSIA) /	WELL HEAD / PRESSURE / (PSIA) /	REMARKS
9/17/75 0830	442	574.472			9/17/75 2130	437	574.319		
9/17/75 0900	442	574.455			9/17/75 2140	437	574.318		
9/17/75 0930	437	574.429		.011	9/17/75 2150	437	574.322		
9/17/75 1000	437	574.399			9/17/75 2200	437	574.315		148.941
9/17/75 1030	437	574.383			9/17/75 2210	437	574.308		
9/17/75 1100	437	574.360			9/17/75 2220	437	574.303		
9/17/75 1130	437	574.356			9/17/75 2230	437	574.295		
9/17/75 1200	437	574.351		148.979	9/17/75 2240	437	574.291		
9/17/75 1230	437	574.347			9/17/75 2250	437	574.287		
9/17/75 1300	437	574.344			9/17/75 2300	437	574.285		148.795
9/17/75 1330	437	574.			9/17/75 2330	437	574.280		
9/17/75 1400	437	574.196		149.04	9/18/75 0000	437	574.264		
9/17/75 1430	437	574.363			9/18/75 0030	437	574.269		
9/17/75 1500	437	574.374			9/18/75 0100	437	574.305		
9/17/75 1530	437	574.384		.109	9/18/75 0130	437	574.318		
9/17/75 1600	437	574.393			9/18/75 0200	437	574.339		
9/17/75 1630	437	574.408		.114	9/18/75 0230	437	574.360		
9/17/75 1700	437	574.409		.109	9/18/75 0300	437	574.379		
9/17/75 1730	437	574.391		.098	9/18/75 0330	437	574.402		
9/17/75 1800	437	574.392		.082	9/18/75 0400	437	574.420		
9/17/75 1800	437	.392		.082RRGE 2 SHUT IN. 20 SEC SHUT IN TIME.	9/18/75 0430	437	574.428		
9/17/75 1801	437	574.390			9/18/75 0500	437	574.435		
9/17/75 1802	437	574.391			9/18/75 0530	437	574.450		
9/17/75 1803	437	574.390			9/18/75 0600	437	574.447		
9/17/75 1804	437	574.389			9/18/75 0630	437	574.447		
9/17/75 1805	437	574.388			9/18/75 0700	437	574.441		
9/17/75 1806	437	574.389			9/18/75 0730	437	574.429		
9/17/75 1807	437	574.386			9/18/75 0800	437	574.418		
9/17/75 1808	437	574.384			9/18/75 0830	437	574.399		
9/17/75 1808	437	574.384			9/18/75 0900	437	574.391		
9/17/75 1809	437	574.385			9/18/75 0930	437	574.377		.995
9/17/75 1810	437	574.385		149.076	9/18/75 1000	437	574.366		.930
9/17/75 1811	437	574.388			9/18/75 1030	437	574.357		.963
9/17/75 1812	437	574.388			9/18/75 1100	437	574.336		.963
9/17/75 1813	437	574.388			9/18/75 1130	437	574.323		.968
9/17/75 1814	437	574.387			9/18/75 1200	437	574.319		.984
9/17/75 1815	437	574.386			9/18/75 1230	437	574.325		.979
9/17/75 1816	437	574.385			9/18/75 1300	437	574.347		
9/17/75 1817	437	574.384			9/18/75 1330	437	574.356		
9/17/75 1818	437	574.380			9/18/75 1400	437	574.372		
9/17/75 1819	437	574.381			9/18/75 1430	437	574.379		
9/17/75 1820	437	574.381			9/18/75 1500	437	574.386		149.098
9/17/75 1825	437	574.380			9/18/75 1530	437	574.448		.141
9/17/75 1830	437	574.381			9/18/75 1530	437	574.448		.448
9/17/75 1835	437	574.379		.055					.141 FIRST DATA POINT AFTER GAGE WAS TURNED ON AFTER A 20 MIN. SHUTDOWN.
9/17/75 1840	437	574.384			9/18/75 1600	437	574.451		
9/17/75 1845	437	574.380			9/18/75 1630	437	574.480		
9/17/75 1850	437	574.376			9/18/75 1700	437	574.487		
9/17/75 1855	437	574.370			9/18/75 1730	437	574.499		.173
9/17/75 1900	437	574.373							
9/17/75 1905	437	574.365			9/18/75 1800	437	574.509		.190
9/17/75 1910	437	574.364			9/18/75 1830	437	574.517		
9/17/75 1915	437	574.367			9/18/75 1900	437	574.509		
9/17/75 1920	437	574.359			9/18/75 1930	437	574.510		
9/17/75 1925	437	574.362			9/18/75 2000	437	574.500		
9/17/75 1930	437	574.361			9/18/75 2030	437	574.483		
9/17/75 1935	437	574.363			9/18/75 2100	437	574.486		.071
9/17/75 1940	437	574.359			9/18/75 2130	437	574.478		.033
9/17/75 1945	437	574.360			9/18/75 2200	437	574.453		.038
9/17/75 1950	437	574.354			9/18/75 2230	437	574.455		.076
9/17/75 1955	437	574.351			9/18/75 2300	437	574.445		
9/17/75 2000	437	574.351			9/18/75 2330	437	574.445		
9/17/75 2010	437	574.347			9/19/75 0000	437	574.435		.049
9/17/75 2020	437	574.345			9/19/75 0030	437	574.444		
9/17/75 2030	437	574.342			9/19/75 0100	437	574.462		
9/17/75 2040	437	574.329			9/19/75 0130	437	574.472		
9/17/75 2050	437	574.332			9/19/75 0200	437	574.489		
9/17/75 2100	437	574.329			9/19/75 0230	437	574.508		
9/17/75 2110	437	574.334			9/19/75 0300	437	574.517		
9/17/75 2120	437	574.323			9/19/75 0330	437	574.549		

RRGE 1 INTERFERENCE TEST DATA. RAFT RIVER VALLEY GEOTHERMAL FIELD, IDAHO

DATE	TIME	FLOW RATE (GPM)	DOWNHOLE PRESSURE (PSIA)	WELL HEAD PRESSURE (PSIA)	REMARKS	DATE	TIME	FLOW RATE (GPM)	DOWNHOLE PRESSURE (PSIA)	WELL HEAD PRESSURE (PSIA)	REMARKS
9/19/75	0400	437	574.572								
9/19/75	0430	437	574.586			9/21/75	1800	432	574.141		RRGE 1. SET AT
9/19/75	0500	437	574.598			9/21/75	1830	432	574.124		1000 FT.
9/19/75	0530	437	574.625			9/21/75	1900	432	574.114	149.541	
9/19/75	0600	437	574.634			9/21/75	1930	374	574.099		
9/19/75	0630	437	574.641			9/21/75	2000	374	574.079		
9/19/75	0700	437	574.590			9/21/75	2030	374	574.062	.444	
9/19/75	0730	437	574.610			9/21/75	2100	374	574.039	.449	
9/19/75	0800	437	574.606	149.249		9/21/75	2130	374	574.003		
9/19/75	0830	437	574.611			9/21/75	2200	374	573.958		
9/19/75	0900	437	574.606			9/21/75	2230	374	573.918		
9/19/75	0930	437	574.585	.244		9/21/75	2300	374	573.883	.309	
9/19/75	1000	437	574.568			9/21/75	2330	374	573.848		
9/19/75	1030	437	574.562			9/22/75	0000	421	573.820	.309	
9/19/75	1100	437	574.552			9/22/75	0030	421	573.790		
9/19/75	1130	437	574.519	.200		9/22/75	0100	421	573.768		
9/19/75	1200	437	574.534	.222		9/22/75	0130	421	573.749		
9/19/75	1230	437	574.538	.265		9/22/75	0200	421	573.739		
9/19/75	1300	437	574.532	.276		9/22/75	0230	421	573.735		
9/19/75	1320	437	574.			9/22/75	0300	421	573.736		
	1320				AT 1320 HRS COMMENCED LOWERING PROBE FROM 1000 TO 3700 FT IN RRGE 1. ELEV,FT TEMP,DEG F 1000 197.5	9/22/75	0330	421	573.741		
						9/22/75	0400	421	573.750		
						9/22/75	0430	421	573.760		
						9/22/75	0500	409	573.768	.260	
						9/22/75	0530	409	573.776		
					1500 179.3	9/22/75	0600	409	573.787		
					1700 212.4	9/22/75	0630	409	573.793		
					1800 228.2	9/22/75	0700	409	573.801		
					2000 TEMP GAGE WENT OUT	9/22/75	0730	409	573.804		
						9/22/75	0800	409	573.795	.260	
					3700 280 ASSUMED COMPLETED LOWERING 1510 HRS. FROM 1525 TO 2230 HRS PRESSURE READINGS INTERMITTENTLY RELIABLE	9/22/75	0830	409	573.790		
						9/22/75	0900	409	573.781		
						9/22/75	0930	409	573.769		
						9/22/75	1000	409	573.744		
						9/22/75	1030	409	573.721	.184	
					LEAKAGE OF WATER IN PROBE SUSPECTED.	9/22/75	1100	421	573.701		
					2230 TO 0100 HRS. PRESS. AND TEMP. GAGE PULLED OUT OF RRGE 1. 1030 TO 1150	9/22/75	1130	421	573.675		
						9/22/75	1200	421	573.651		
						9/22/75	1230	421	573.633		
						9/22/75	1300	421	573.619	.195	
9/20/75					HRS. PRESS. GAGE LOWERED TO 1000 FT. 1230 TO 1450 HRS. SHORT CIRCUIT,PRESS. GAGE REMOVED. 1625 TO 1635 HRS. PRESS. GAGE	9/22/75	1330	421	573.599		
						9/22/75	1400	421	573.605		
						9/22/75	1430	421	573.599		
						9/22/75	1500	421	573.602	.205	
						9/22/75	1530	421	573.606		
					LOWERED TO 1000 FT. WITH OUT TEMP. GAGE. ASSUME TEMP. IS 197.1 DEG F.	9/22/75	1600	421	573.		
						9/22/75	1630	421	573.624		
						9/22/75	1700	409	573.625	.184	
						9/22/75	1740	409	573.645		
9/20/75	1800	437	573.783	.708		9/22/75	1800	409	573.639	.173	
9/20/75	1830	437	573.773								
9/20/75	1900	437	573.762	.708		9/22/75	1840	409	573.648		
9/20/75	1930	437	573.780			9/22/75	1900	409	573.654	.163	
					HP GAGE CORRECTED FOR SLIGHT LEAKAGE AT STRIPPER.	9/22/75	1930	409	573.661		
						9/22/75	2010	409	573.646	.114	
						9/22/75	2040	409	573.636		
9/20/75	2000	437	573.810			9/22/75	2110	409	573.622		
9/20/75	2030	437	573.880	.741		9/22/75	2140	409	573.599		
9/20/75	2100	437	573.880	.735		9/22/75	2210	409	573.582	148.925	
9/20/75	2130	437	573.864	.735		9/22/75	2240	409	573.553		
9/20/75	2200	437	573.859			9/22/75	2310	409	573.530		
9/20/75	2230	437	573.838			9/22/75	2340	386	573.503		
9/20/75	2230	437	573.838		PRODUCTION STARTED AT RRGE 2. FLOW RATE 432 GPM	9/23/75	0010	386	573.489		
9/20/75	2300	437	573.779			9/23/75	0040	386	573.464		
9/20/75	2330	437	573.726	.735		9/23/75	0110	386	573.453		
						9/23/75	0140	386	573.449		
9/20/75	2350	432	573.			9/23/75	0210	386	573.447		
9/21/75					HP SIGNAL WENT DEAD. 0800 TO 1700 HRS. THE HP GAGE WAS PULLED OUT,CLEANED, TESTED AND RELOWERED INTO	9/23/75	0240	386	573.439		
						9/23/75	0310	386	573.447		
						9/23/75	0340	386	573.437		
						9/23/75	0410	386	573.445		

## RRGE 1 INTERFERENCE TEST DATA, RAFT RIVER VALLEY GEOTHERMAL FIELD, IDAHO

DATE / /	TIME /	FLOW RATE / (GPH) /	DOWNHOLE / PRESSURE / (PSIA) /	WELL HEAD / PRESSURE / (PSIA) /	REMARKS	DATE / /	TIME /	FLOW RATE / (GPH) /	DOWNHOLE / PRESSURE / (PSIA) /	WELL HEAD / PRESSURE / (PSIA) /	REMARKS
9/23/75	0440	386	573.456			9/25/75	1150	398	573.796		
9/23/75	0510	386	573.476			9/25/75	1220	398	573.774		
9/23/75	0540	386	573.487			9/25/75	1250	386	573.771		.358
9/23/75	0610	386	573.498		.849	9/25/75	1320	386	573.751		
9/23/75	0640	386	573.505			9/25/75	1350	386	573.742		.341
9/23/75	0710	386	573.499			9/25/75	1420	386	573.732		
9/23/75	0740	386	573.513			9/25/75	1450	386	573.723		.352
9/23/75	0810	386	573.522		.871	9/25/75	1520	404	573.715		
9/23/75	0840	386	573.517			9/25/75	1550	404	573.711		.352
9/23/75	0910	386	573.486			9/25/75	1620	404	573.705		
9/23/75	0940	386	573.474			9/25/75	1650	404	573.711		
9/23/75	1010	386	573.430		.865	9/25/75	1720	398	573.705		.341
9/23/75	1040	386	573.435			9/25/75	1750	398	573.713		
9/23/75	1110	386	573.426			9/25/75	1820	398	573.716		
9/23/75	1140	386	573.			9/25/75	1850	398	573.725		.320
9/23/75	1210	386	573.388			9/25/75	1920	398	573.721		
9/23/75	1240	386	573.382		.855	9/25/75	1950	386	573.723		.293
9/23/75	1310	386	573.375			9/25/75	2020	386	573.724		.277
9/23/75	1340	386	573.345			9/25/75	2050	386	573.715		
9/23/75	1410	421	573.335		.876	9/25/75	2120	386	573.712		
9/23/75	1440	421	573.337			9/25/75	2150	386	573.710		.228
9/23/75	1510	421	573.336		.855	9/25/75	2220	404	573.698		
9/23/75	1540	421	573.334			9/25/75	2250	404	573.685		.163
9/23/75	1610	489	573.344		.865	9/25/75	2320	404	573.672		
9/23/75	1730	386	573.355		.860	9/25/75	2350	404	573.650		
9/23/75	1900	386	573.372		.860	9/26/75	0020	404	573.629		.125
9/23/75	1930	386	573.385		.844	9/26/75	0050	404	573.615		
9/23/75	2030	386	573.385			9/26/75	0120	404	573.589		
9/23/75	2220	380	573.351		.730	9/26/75	0150	404	573.579		
9/23/75	2243	380	573.308		.703	9/26/75	0220	404	573.567		148.061
	2243		.308		.703HP GAGE FAILED, PULLED OUT OF WELL FOR CHECKING AND REPAIR.	9/26/75	0250	404	573.558		
9/24/75	1400	409	574.514		.671	9/26/75	0320	404	573.544		
9/24/75	1400	409	574.514		.671HP GAGE LOWERED INTO RRGE	9/26/75	0350	404	573.539		
					1 AND SET AT 1000 FT.	9/26/75	0420	398	573.543		.012
						9/26/75	0450	398	573.531		
9/24/75	1430	409	574.043			9/26/75	0520	398	573.533		147.990
9/24/75	1500	409	574.013			9/26/75	0550	398	573.537		
9/24/75	1530	409	574.003			9/26/75	0620	398	573.544		
9/24/75	1600	409	574.017			9/26/75	0650	398	573.548		
						9/26/75	0720	398	573.570		
9/24/75	1630	409	573.990			9/26/75	0750	398	573.577		148.033
9/24/75	1700	409	573.993		.666	9/26/75	0820	398	573.587		.05
9/24/75	1750	404	574.011			9/26/75	0850	398	573.583		
9/24/75	1820	404	573.995			9/26/75	0920	398	573.588		.055
9/24/75	1900	404	573.999			9/26/75	0950	398	573.587		
9/24/75	1930	404	573.995		148.606	9/26/75	1020	398	573.585		
9/24/75	2000	404	574.002			9/26/75	1050	398	573.581		.066
9/24/75	2030	404	574.017			9/26/75	1120	398	573.576		
9/24/75	2100	404	574.048			9/26/75	1150	398	573.564		
9/24/75	2130	404	574.036			9/26/75	1220	404	573.559		.088
9/24/75	2200	404	574.073		.666	9/26/75	1250	404	573.553		
9/24/75	2230	404	574.175			9/26/75	1320	404	573.550		.077
9/24/75	2320	404	574.112			9/26/75	1350	404	573.532		
9/25/75	0020	404	573.975		.466	9/26/75	1420	404	573.513		.077
9/25/75	0120	404	573.933			9/26/75	1450	404	573.509		
9/25/75	0220	404	573.877			9/26/75	1520	404	573.498		.066
9/25/75	0320	404	573.845			9/26/75	1607	404	573.497		
9/25/75	0350	404	573.833			9/26/75	1620	404	573.492		.071
9/25/75	0420	404	573.857		.358	9/26/75	1650	404	573.492		
9/25/75	0520	404	573.841			9/26/75	1720	404	573.489		.061
9/25/75	0620	404	573.831		.347	9/26/75	1750	404	573.493		
9/25/75	0720	404	573.855			9/26/75	1820	404	573.489		.050
9/25/75	0750	404	573.857			9/26/75	1850	404	573.492		
9/25/75	0820	398	573.854		.368	9/26/75	1920	404	573.495		.028
9/25/75	0850	398	573.849			9/26/75	1950	404	573.497		
9/25/75	0920	398	573.846			9/26/75	2020	398	573.496		.017
9/25/75	0950	398	573.840			9/26/75	2050	398	573.500		
9/25/75	1020	398	573.831			9/26/75	2120	398	573.500		147.969
9/25/75	1050	398	573.822		.385	9/26/75	2150	409	573.495		
9/25/75	1120	398	573.806			9/26/75	2220	409	573.480		.942

RRGE 1 INTERFERENCE TEST DATA, RAFT RIVER VALLEY GEOTHERMAL FIELD, IDAHO

DATE / / /	TIME /	FLOW RATE / / (GPM) /	DOWNHOLE / / PRESSURE / / (PSIA) /	WELL HEAD / / PRESSURE / / (PSIA) /	REMARKS	DATE / / /	TIME /	FLOW RATE / / (GPM) /	DOWNHOLE / / PRESSURE / / (PSIA) /	WELL HEAD / / PRESSURE / / (PSIA) /	REMARKS
9/26/75	2250	409	573.470			9/28/75	1130	404	572.504		.753
9/26/75	2300	409	573.471			9/28/75	1200	404	572.579		
9/26/75	2350	409	573.			9/28/75	1230	404	572.598		
9/27/75	0020	409	573.456	.915		9/28/75	1300	404	572.596		
9/27/75	0050	409	573.442			9/28/75	1330	404	572.591	147.801	
9/27/75	0120	409	573.421			9/28/75	1400	404	572.582		
9/27/75	0150	409	573.			9/28/75	1430	404	572.582		
9/27/75	0220	409	573.403			9/28/75	1500	404	572.577	.817	
9/27/75	0250	409	573.387			9/28/75	1530	404	572.567		
9/27/75	0320	409	573.	.834		9/28/75	1600	404	572.564		
9/27/75	0350	409	573.368			9/28/75	1630	404	572.553		
9/27/75	0420	409	573.368			9/28/75	1700	404	572.539		
9/27/75	0450	409	573.371			9/28/75	1730	404	572.531	.780	
9/27/75	0520	409	573.370	147.839		9/28/75	1800	404	572.529		
9/27/75	0550	409	573.400			9/28/75	1830	404	572.519		
9/27/75	0750	404	573.409	.909		9/28/75	1900	404	572.511		
9/27/75	0750	404	.409	.909HP GAGE MALFUNCTION. REMOVED FROM WELL. INSTALLED NEW CROSSOVER FROM CABLE AND NEW CONNECTION. HP GAGE RE/ LOWERED AND SET AT 1000FT		9/28/75	1930	404	572.509	.731	
9/27/75	1400	404	576.482	.942		9/28/75	2000	404	572.510		
9/27/75	1400	404	.482	.942THE HP GAGE READINGS IN COLUMN 4 ARE THE CORRECT/ ED VALUES FOR THE TIME PERIOD 9/27/75 1400 HRS. TO 10/3/75 0950 HRS.		9/28/75	2030	404	572.516		
9/27/75	1430	404	572.792			9/28/75	2100	404	572.510	.650	
9/27/75	1500	404	572.746	.936		9/28/75	2130	404	572.514		
9/27/75	1530	404	572.735			9/28/75	2200	404	572.514		
9/27/75	1600	404	572.722			9/28/75	2230	404	572.508		
9/27/75	1630	404	572.716			9/28/75	2300	404	572.509	.612	
9/27/75	1700	404	572.708			9/28/75	2330	404	572.506		
9/27/75	1730	404	572.704	.898		9/29/75	0000	404	572.505		
9/27/75	1800	404	572.693			9/29/75	0030	404	572.502		
9/27/75	1830	404	572.696			9/29/75	0100	404	572.501	.596	
9/27/75	1900	404	572.691			9/29/75	0130	404	572.498		
9/27/75	1930	404	572.687	.861		9/29/75	0200	404	572.484		
9/27/75	2000	404	572.683			9/29/75	0230	404	572.482		
9/27/75	2030	404	572.696			9/29/75	0300	404	572.470		
9/27/75	2100	404	572.700			9/29/75	0330	404	572.457	.520	
9/27/75	2130	404	572.695			9/29/75	0400	404	572.442		
9/27/75	2200	404	572.699	.780		9/29/75	0430	404	572.427		
9/27/75	2230	404	572.686			9/29/75	0500	404	572.419		
9/27/75	2300	404	572.667			9/29/75	0530	398	572.402	.493	
9/27/75	2330	404	572.667			9/29/75	0600	398	572.390		
9/28/75	0000	404	572.692			9/29/75	0630	398	572.379		
9/28/75	0030	404	572.705	.769		9/29/75	0700	398	572.370		
9/28/75	0100	404	572.712			9/29/75	0730	398	572.357		
9/28/75	0130	404	572.728			9/29/75	0800	398	572.347	.428	
9/28/75	0200	404	572.707			9/29/75	0830	398	572.343		
9/28/75	0230	404	572.689			9/29/75	0900	398	572.346		
9/28/75	0300	404	572.735	.855		9/29/75	0930	398	572.337		
9/28/75	0330	404	572.753			9/29/75	0950	398	572.342		
9/28/75	0400	404	572.706			9/29/75	1020	398	572.342	.439	
9/28/75	0430	404	572.679			9/29/75	1050	398	572.350		
9/28/75	0500	404	572.667	.758		9/29/75	1120	398	572.354	.472	
9/28/75	0530	404	572.649			9/29/75	1150	398	572.358		
9/28/75	0600	404	572.639			9/29/75	1220	398	572.367	.509	
9/28/75	0630	404	572.612			9/29/75	1250	398	572.378		
9/28/75	0700	404	572.622	.709		9/29/75	1320	398	572.386	.558	
9/28/75	0730	404	572.592			9/29/75	1350	398	572.394	.569	
9/28/75	0800	404	572.591			9/29/75	1420	404	572.396		
9/28/75	0830	404	572.595			9/29/75	1450	404	572.398		
9/28/75	0900	404	572.583	.704		9/29/75	1520	404	572.392	147.601	
9/28/75	0930	404	572.588			9/29/75	1550	404	572.389		
9/28/75	1000	404	572.587			9/29/75	1620	404	572.381		
9/28/75	1030	404	572.586			9/29/75	1650	404	572.378	.580	
9/28/75	1100	404	572.584			9/29/75	1720	404	572.369		
						9/29/75	1750	404	572.361	.547	
						9/29/75	1820	404	572.362		
						9/29/75	1850	404	572.347		
						9/29/75	1920	404	572.337	.482	
						9/29/75	1950	404	572.337		
						9/29/75	2020	404	572.332	.450	
						9/29/75	2050	404	572.328		
						9/29/75	2120	404	572.326		
						9/29/75	2150	404	572.328		



## RRGE 1 INTERFERENCE TEST DATA, RAFT RIVER VALLEY GEOTHERMAL FIELD, IDAHO

DATE / /	TIME /	/FLOW RATE/ / (GPM) /	DOWNHOLE/ / PRESSURE/ / (PSIA) /	WELL HEAD/ PRESSURE/ (PSIA) /	REMARKS	DATE / /	TIME /	/FLOW RATE/ / (GPM) /	DOWNHOLE/ / PRESSURE/ / (PSIA) /	WELL HEAD/ PRESSURE/ (PSIA) /	REMARKS
9/29/75	2220	404	572.324	.385		10/01/75	0950	409	572.031	.066	
9/29/75	2250	404	572.320			10/01/75	1020	409	572.016	.083	
9/29/75	2320	404	572.331			10/01/75	1050	409	572.020	.099	
9/29/75	2350	404	572.331			10/01/75	1120	409	572.028	.126	
9/30/75	0020	404	572.335	.369		10/01/75	1150	409	572.022	.158	
9/30/75	0050	404	572.357			10/01/75	1220	409	572.034	.180	
9/30/75	0120	404	572.345			10/01/75	1250	409	572.039	.212	
9/30/75	0150	404	572.345			10/01/75	1320	409	572.053	.234	
9/30/75	0220	404	572.342	.347		10/01/75	1350	409	572.075	.266	
9/30/75	0250	404	572.337			10/01/75	1420	409	572.084	.293	
9/30/75	0320	404	572.340			10/01/75	1450	409	572.091	.326	
9/30/75	0350	404	572.325			10/01/75	1520	409	572.099	.342	
9/30/75	0420	404	572.316			10/01/75	1550	409	572.106	.358	
9/30/75	0450	404	572.306	.326		10/01/75	1620	409	572.103	.358	
9/30/75	0520	404	572.293			10/01/75	1650	409	572.106	.347	
9/30/75	0550	404	572.283			10/01/75	1720	409	572.104	.331	
9/30/75	0620	404	572.270	.304		10/01/75	1750	409	572.090	.315	
9/30/75	0650	398	572.247			10/01/75	1820	409	572.093	.283	
9/30/75	0720	398	572.237	.283		10/01/75	1850	415	572.070	.250	
9/30/75	0750	398	572.214			10/01/75	1920	415	572.041	.218	
9/30/75	0820	398	572.200			10/01/75	1950	415	572.046	.185	
9/30/75	0850	398	572.189			10/01/75	2020	415	572.040	.153	
9/30/75	0920	398	572.190			10/01/75	2050	415	572.023	.120	
9/30/75	0950	398	572.185	.180		10/01/75	2120	415	571.997	147.099	
9/30/75	1020	398	572.184			10/01/75	2150	415	571.991	.072	
9/30/75	1050	404	572.184	.239		10/01/75	2220	409	571.992	.050	
9/30/75	1120	404	572.189			10/01/75	2250	409	571.995	.029	
9/30/75	1150	404	572.191	.288		10/01/75	2320	409	571.999	.012	
9/30/75	1220	404	572.211	.326		10/01/75	2350	409	571.984	.007	
9/30/75	1250	404	572.211	.353		10/02/75	0020	409	572.001	.007	
9/30/75	1320	404	572.220	.380		10/02/75	0050	409	572.018	.023	
9/30/75	1350	404	572.231	.445		10/02/75	0120	409	572.026	.039	
9/30/75	1420	404	572.226	.439		10/02/75	0150	409	572.048	.039	
9/30/75	1450	404	572.240	.423		10/02/75	0220	409	572.034	.061	
9/30/75	1520	404	572.244	.407		10/02/75	0250	409	572.065	.072	
9/30/75	1550	404	572.248	.385		10/02/75	0320	409	572.067	.077	
9/30/75	1620	404	572.253	.364		10/02/75	0350	409	572.075	.088	
9/30/75	1650	404	572.243	.347		10/02/75	0420	409	572.076	.088	
9/30/75	1720	404	572.235	.320		10/02/75	0450	409	572.086	.093	
9/30/75	1750	404	572.228			10/02/75	0520	409	572.081	.077	
9/30/75	1820	404	572.216			10/02/75	0550	409	572.068	.061	
9/30/75	1850	404	572.215			10/02/75	0620	409	572.049	.045	
9/30/75	1920	404	572.194			10/02/75	0650	409	572.044	.034	
9/30/75	1950	404	572.185	147.299		10/02/75	0720	409	572.019	.002	
9/30/75	2020	404	572.178	.277		10/02/75	0750	409	572.000	146.996	
9/30/75	2050	404	572.163	.261		10/02/75	0820	409	571.977	.964	
9/30/75	2120	409	572.154	.239		10/02/75	0850	409	571.932	.948	
9/30/75	2150	409	572.137	.223		10/02/75	0920	409	571.931	.937	
9/30/75	2220	409	572.149	.212		10/02/75	0950	409	571.923	.926	
9/30/75	2250	409	572.150	.196		10/02/75	1020	409	571.896	.926	
9/30/75	2320	409	572.157			10/02/75	1050	409	571.903	.937	
9/30/75	2350	409	572.157	.180		10/02/75	1120	409	571.884	.953	
10/01/75	0050	409	572.176	.207		10/02/75	1150	409	571.869	.969	
10/01/75	0120	409	572.186	.202		10/02/75	1220	409	571.890	.996	
10/01/75	0150	409	572.191	.218		10/02/75	1250	409	571.899	147.018	
10/01/75	0220	409	572.202	.229		10/02/75	1320	409	571.913	.045	
10/01/75	0250	409	572.195	.234		10/02/75	1350	409	571.915	.061	
10/01/75	0320	409	572.216	.229		10/02/75	1420	409	571.937	.088	
10/01/75	0350	409	572.203	.229		10/02/75	1450	409	571.946	.115	
10/01/75	0420	409	572.202	.223		10/02/75	1520	409	571.956	.137	
10/01/75	0450	409	572.205	.212		10/02/75	1550	409	571.982	.142	
10/01/75	0520	409	572.184	.202		10/02/75	1620	409	571.982	.142	
10/01/75	0550	409	572.166	.180		10/02/75	1650	409	572.005	.137	
10/01/75	0620	409	572.154	.164		10/02/75	1720	409	571.989	.126	
10/01/75	0650	409	572.130	.142		10/02/75	1750	409	571.984	.110	
10/01/75	0720	409	572.108	.120		10/02/75	1820	409	571.991	.088	
10/01/75	0750	409	572.098	.099		10/02/75	1850	409	571.989	.061	
10/01/75	0820	409	572.061	.077		10/02/75	1920	409	571.952	.029	
10/01/75	0850	409	572.050	.072		10/02/75	1950	409	571.940	146.991	
10/01/75	0920	409	572.041	.066		10/02/75	2020	409	571.920	.964	

## RRGE 1 INTERFERENCE TEST DATA, RAFT RIVER VALLEY GEOTHERMAL FIELD, IDAHO

DATE / /	TIME / /	FLW RATE / (GPH) /	DOWNHOLE / PRESSURE / (PSIA) /	WELL HEAD / PRESSURE / (PSIA) /	REMARKS	DATE / /	TIME / /	FLW RATE / (GPH) /	DOWNHOLE / PRESSURE / (PSIA) /	WELL HEAD / PRESSURE / (PSIA) /	REMARKS
10/02/75	2050	409	571.903	.931		10/04/75	0750	404	571.831	.796	
10/02/75	2120	409	571.872	.899		10/04/75	0820	409	571.808	.780	
10/02/75	2150	409	571.864	.877		10/04/75	0850	409	571.776	.	
10/02/75	2220	404	571.829	.850		10/04/75	0920	409	571.762	.736	
10/02/75	2250	404	571.835	.834		10/04/75	0950	409	571.732	.715	
10/02/75	2320	404	571.840	.823		10/04/75	1020	409	571.720	.704	
10/02/75	2350	404	571.820	.818		10/04/75	1050	409	571.687	.699	
10/03/75	0020	404	571.839	146.818		10/04/75	1120	409	571.657	.699	
10/03/75	0050	404	571.840	.834		10/04/75	1150	409	571.646	.694	
10/03/75	0120	404	571.855	.840		10/04/75	1220	409	571.665	.704	
10/03/75	0150	404	571.862	.856		10/04/75	1250	409	571.653	.715	
10/03/75	0220	409	571.886	.872		10/04/75	1320	409	571.633	.721	
10/03/75	0250	409	571.904	.894		10/04/75	1350	409	571.646	.742	
10/03/75	0320	409	571.910	.910		10/04/75	1420	409	571.650	.764	
10/03/75	0350	409	571.928	.931		10/04/75	1450	409	571.673	.791	
10/03/75	0420	404	571.954	.942		10/04/75	1520	409	571.687	.818	
10/03/75	0450	404	571.947	.953		10/04/75	1550	409	571.714	.845	
10/03/75	0520	404	571.951	.964		10/04/75	1620	409	571.716	.861	
10/03/75	0550	404	571.954	.948		10/04/75	1650	409	571.740	.877	
10/03/75	0620	404	571.963	.942		10/04/75	1720	409	571.760	.883	
10/03/75	0650	404	571.923	.926		10/04/75	1750	409	571.739	.888	
10/03/75	0720	404	571.919	.915		10/04/75	1820	409	571.758	.877	
10/03/75	0750	404	571.918	.894		10/04/75	1850	409	571.770	.861	
10/03/75	0820	404	571.877	.867		10/04/75	1920	409	571.757	.834	
10/03/75	0850	404	571.863	.845		10/04/75	1950	409	571.738	.813	
10/03/75	0920	404	571.838	.		10/04/75	2020	409	571.718	.780	
10/03/75	0950	404	571.811	.807		10/04/75	2050	409	571.706	.	
10/03/75	1020	404	571.790	.796		10/04/75	2120	409	571.683	.704	
10/03/75	1050	404	571.	.796		10/04/75	2150	409	571.643	.667	
10/03/75	1120	404	571.757	.796		10/04/75	2220	409	571.643	.629	
10/03/75	1150	404	571.762	.802		10/04/75	2250	409	571.596	.596	
10/03/75	1220	404	571.747	.813		10/04/75	2320	409	571.594	.510	
10/03/75	1250	404	571.763	.840		10/04/75	2350	409	571.572	.542	
10/03/75	1320	404	571.763	.867		10/05/75	0020	409	571.561	.526	
10/03/75	1350	404	571.801	.888		10/05/75	0050	409	571.547	.521	
10/03/75	1420	404	571.784	.915		10/05/75	0120	409	571.558	.521	
10/03/75	1450	404	571.812	.942		10/05/75	0150	409	571.573	.526	
10/03/75	1520	404	571.824	.958		10/05/75	0220	409	571.564	.548	
10/03/75	1550	404	571.834	.975		10/05/75	0250	409	571.599	.564	
10/03/75	1620	404	571.881	.985		10/05/75	0320	409	571.615	.580	
10/03/75	1650	404	571.874	.980		10/05/75	0350	409	571.619	.602	
10/03/75	1720	404	571.866	.		10/05/75	0420	409	571.657	.634	
10/03/75	1750	404	571.874	.964		10/05/75	0450	409	571.662	.650	
10/03/75	1820	404	571.864	.953		10/05/75	0520	409	571.676	.667	
10/03/75	1850	404	571.856	.926		10/05/75	0550	409	571.683	.683	
10/03/75	1920	404	571.845	.904		10/05/75	0620	404	571.738	146.677	
10/03/75	1950	404	571.814	.877		10/05/75	0650	404	571.706	.694	
10/03/75	2020	404	571.802	.850		10/05/75	0720	404	571.735	.688	
10/03/75	2050	404	571.787	.823		10/05/75	0750	404	571.715	.683	
10/03/75	2120	398	571.768	.796		10/05/75	0820	404	571.687	.667	
10/03/75	2150	398	571.754	.		10/05/75	0850	404	571.706	.661	
10/03/75	2220	398	571.724	.742		10/05/75	0920	404	571.682	.645	
10/03/75	2250	398	571.700	.721		10/05/75	0950	404	571.654	.634	
10/03/75	2320	398	571.684	.699		10/05/75	1020	404	571.658	.618	
10/03/75	2350	404	571.686	.688		10/05/75	1050	404	571.604	.613	
10/04/75	0020	404	571.667	.683		10/05/75	1120	404	571.599	.618	
10/04/75	0050	404	571.672	.683		10/05/75	1150	404	571.586	.618	
10/04/75	0120	404	571.692	.688		10/05/75	1220	404	571.559	.613	
10/04/75	0150	404	571.707	.694		10/05/75	1250	404	571.550	.623	
10/04/75	0220	404	571.698	.715		10/05/75	1320	404	571.544	.623	
10/04/75	0250	404	571.723	.726		10/05/75	1350	404	571.539	.634	
10/04/75	0320	404	571.744	146.748		10/05/75	1420	404	571.542	.639	
10/04/75	0350	404	571.777	.764		10/05/75	1450	404	571.553	.650	
10/04/75	0420	404	571.808	.780		10/05/75	1520	404	571.570	.667	
10/04/75	0450	404	571.849	.796		10/05/75	1550	404	571.596	.677	
10/04/75	0520	404	571.818	.807		10/05/75	1620	404	571.606	.683	
10/04/75	0550	404	571.849	.818		10/05/75	1650	404	571.609	.710	
10/04/75	0620	404	571.846	.829		10/05/75	1720	404	571.594	.715	
10/04/75	0650	404	571.847	.823		10/05/75	1750	404	571.624	.715	
10/04/75	0720	404	571.812	.813		10/05/75	1820	404	571.643	.715	

## RRGE 1 INTERFERENCE TEST DATA, RAFT RIVER VALLEY GEOTHERMAL FIELD, IDAHO

DATE / TIME	FLOW RATE / (GPM)	DOWNHOLE / PRESSURE / (PSIA)	WELL HEAD / PRESSURE / (PSIA)	REMARKS	DATE / TIME	FLOW RATE / (GPM)	DOWNHOLE / PRESSURE / (PSIA)	WELL HEAD / PRESSURE / (PSIA)	REMARKS
10/05/75	1850	404	571.667	.710					
10/05/75	1920	404	571.631	.699					
10/05/75	1950	404	571.640	.683					
10/05/75	2020	404	571.617	.656					
10/05/75	2050	404	571.610	.634					
10/05/75	2120	404	571.566	.596					
10/05/75	2150	404	571.531	.559					
10/05/75	2220	404	571.527	.521					
10/05/75	2250	404	571.502	.391					
10/05/75	2320	404	571.470	.456					
10/05/75	2350	404	571.466	.429					
10/06/75	0020	404	571.436	.413					
10/06/75	0050	404	571.427	.391					
10/06/75	0120	404	571.405	.386					
10/06/75	0150	404	571.406	.380					
10/06/75	0220	404	571.424	.386					
10/06/75	0250	404	571.417	.397					
10/06/75	0320	404	571.439	.413					
10/06/75	0350	404	571.454	.429					
10/06/75	0420	404	571.475	.445					
10/06/75	0450	404	571.522	.461					
10/06/75	0520	404	571.524	.468					
10/06/75	0550	404	571.534	.499					
10/06/75	0620	404	571.553	.521					
10/06/75	0650	404	571.560	.537					
10/06/75	0720	404	571.570	.532					
10/06/75	0750	404	571.598	.542					
10/06/75	0820	392	571.567	.532					
10/06/75	0850	404	571.598	.521					
10/06/75	0920	404	571.565	146.516					
10/06/75	0950	404	571.562	.505					
10/06/75	1020	404	571.526	.494					
10/06/75	1050	404	571.516	.483					
10/06/75	1120	404	571.483	.472					
10/06/75	1150	404	571.464	.456					
10/06/75	1220	404	571.436	.456					
10/06/75	1250	404	571.438	.456					
10/06/75	1320	404	571.408	.456					
10/06/75	1350	404	571.420	.456					
10/06/75	1420	404	571.438	.450					
10/06/75	1450	404	571.432	.456					
10/06/75	1520	404	571.421	.461					
10/06/75	1550	404	571.432	.466					
10/06/75	1620	404	571.464	.478					
10/06/75	1650	404	571.489	.488					
10/06/75	1720	404	571.461	.505					
10/06/75	1750	404	571.478	.510					
10/06/75	1820	404	571.498	.510					
10/06/75	1850	404	571.523	.510					
10/06/75	1920	404	571.509	.510					
10/06/75	1950	404	571.471	.591					
10/06/75	2020	404	571.487	.478					
10/06/75	2050	404	571.456	.461					
10/06/75	2120	404	571.454	.429					
10/06/75	2150	404	571.418	.402					
10/06/75	2220	404	571.394	.375					
10/06/75	2250	404	571.364	.348					
10/06/75	2320	404	571.354	.321					
10/06/75	2350	404	571.310	.288					
10/07/75	0020	404	571.317	.267					
10/07/75	0050	404	571.291	.251					
10/07/75	0120	404	571.250	.240					
10/07/75	0150	404	571.261	.213					
10/07/75	0220	404	571.284	.213					
10/07/75	0250	404	571.280	.218					
10/07/75	0320	404	571.281	.213					
10/07/75	0350	404	571.287	.256					
10/07/75	0420	404	571.307	.267					
10/07/75	0450	404	571.327	.278					
10/07/75	0520	404	571.326	.288					
10/07/75	0550	404	571.351	.326					
10/07/75	0620	404	571.374	.337					
10/07/75	0650	404	571.401	.348					
10/07/75	0720	404	571.404	.364					
10/07/75	0750	404	571.396	.391					
10/07/75	0820	404	571.405	.391					
10/07/75	0850	404	571.465	.386					
10/07/75	0920	404	571.397	.380					
10/07/75	0950	404	571.434	.370					
10/07/75	1020	404	584.752	.321					
10/07/75	1020		.752	.321	FROM 1020 HRS TO 1150 HRS ON 10/7/75, THE HP GAGE WAS LOWERED FROM 1000 FT TO 4500 FT.				
10/07/75	1050	404	584.	.451					
10/07/75	1120	404	584.	.424					
10/07/75	1150	404	2003.763	.418					
10/07/75	1220	404	2003.720	146.402					
10/07/75	1250	404	2003.697	.397					
10/07/75	1320	404	2003.667	.375					
10/07/75	1350	404	2003.660	.375					
10/07/75	1420	404	2003.651	.359					
10/07/75	1450	404	2003.649	.348					
10/07/75	1520	404	2003.648	.353					
10/07/75	1550	404	2003.654	.380					
10/07/75	1620	404	2003.655	.386					
10/07/75	1650	404	2003.656	.391					
10/07/75	1720	404	2003.659	.397					
10/07/75	1750	404	2003.668	.397					
10/07/75	1820	404	2003.669	.397					
10/07/75	1850	404	2003.682	.402					
10/07/75	1920	404	2003.679	.429					
10/07/75	1950	404	2003.675	.424					
10/07/75	2020	404	2003.666	.					
10/07/75	2050	404	2003.653	.191					
10/07/75	2150	404	2003.601	.375					
10/07/75	2220	404	2003.601	.353					
10/07/75	2250	404	2003.582	.326					
10/07/75	2320	404	2003.549	.310					
10/07/75	2350	404	2003.530	.283					
10/08/75	0020	404	2003.496	.256					
10/08/75	0050	404	2003.484	.234					
10/08/75	0050		.484	.234	HP GAGE MALFUNCTION.				
10/09/75	1830	404	571.316						
10/09/75	1830	404	571.316		HP GAGE REPAIRED.				
10/09/75	1920	404	571.391						
10/09/75	2000	404	571.336						
10/09/75	2050	404	571.362						
10/09/75	2140	404	571.330						
10/09/75	2220	404	571.320						
10/09/75	2250	404	571.326						
10/09/75	2320	404	571.279						
10/10/75	0000	404	571.195	.261					
10/10/75	0100	404	571.161	.251					
10/10/75	0200	404	571.199	.224					
10/10/75	0300	404	571.190	.202					
10/10/75	0400	404	571.199	.175					
10/10/75	0600	404	571.170	.175					
10/10/75	0700	404	571.161	.186					
10/10/75	0800	404	571.165	.207					
10/10/75	0900	404	571.148	.218					
10/10/75	1000	404	571.	.218					
10/10/75	1000			.218	HP GAGE MALFUNCTION				
10/10/75	1600	404	571.291	.278					
10/10/75	1700	404	571.290	.256					
10/10/75	1800	404	571.277	.240					
10/10/75	1900	404	571.241	.229					
10/10/75	2000	404	571.209	.218					
10/10/75	2100	404	571.217	.207					
10/10/75	2300	404	571.150	.175					

## RRGE 1 INTERFERENCE TEST DATA, RAFT RIVER VALLEY GEOTHERMAL FIELD, IDAHO

DATE / /	TIME /	FLOW RATE / (GPM) /	DOWNHOLE / PRESSURE / (PSIA) /	WELL HEAD / PRESSURE / (PSIA) /	REMARKS	DATE / /	TIME /	FLOW RATE / (GPM) /	DOWNHOLE / PRESSURE / (PSIA) /	WELL HEAD / PRESSURE / (PSIA) /	REMARKS
10/10/75	2310	404	570.985	.175		10/12/75	1900				.940
10/11/75	0000	404	571.171	.153		10/12/75	1930				
10/11/75	0100	404	571.147	.132		10/12/75	2000				.930
10/11/75	0200	404	571.085	146.094		10/12/75	2030				.930
10/11/75	0300	404	571.089	.067		10/12/75	2100				.920
10/11/75	0400	404	571.043	.029		10/12/75	2130				.930
10/11/75	0500	404	571.041	.008		10/12/75	2200				.900
10/11/75	0620	404	571.039	.008		10/12/75	2230				.930
10/11/75	0700	404	571.013	.002		10/12/75	2300				.900
10/11/75	0800	404	571.040	.013		10/12/75	2330				.920
10/11/75	0900	404	571.114	.018		10/13/75	0000				.920
10/11/75	1000	404	571.065	.045		10/13/75	0030				.930
10/11/75	1200	404	571.126	.056		10/13/75	0100				.920
10/11/75	1330	404	571.125	.056		10/13/75	0130				.920
10/11/75	1510	404	571.053	.061		10/13/75	0200				.920
10/11/75	1530	404	571.108	.051		10/13/75	0230				.920
10/11/75	1640	404	571.032	.051		10/13/75	0300				.910
10/11/75	1710	404	571.069	.045		10/13/75	0330				.910
10/11/75	1730			.040		10/13/75	0400				.890
10/11/75	1800			.040		10/13/75	0430				.890
10/11/75	1830					10/13/75	0500				.880
10/11/75	1900			.040		10/13/75	0530				.870
10/11/75	1930			.020		10/13/75	0600				.860
10/11/75	2000			.030		10/13/75	0630				.850
10/11/75	2030			.020		10/13/75	0700				.840
10/11/75	2100			.020		10/13/75	0730				.830
10/11/75	2130			.020		10/13/75	0800				.820
10/11/75	2200			.010		10/13/75	0830				.830
10/11/75	2230			.020		10/13/75	0900				.820
10/11/75	2300			.000		10/13/75	0930				.820
10/11/75	2330			.010		10/13/75	1000				.820
10/12/75	0000			.000		10/13/75	1030				.820
10/12/75	0030			.000		10/13/75	1100				.840
10/12/75	0100			.000		10/13/75	1130				.870
10/12/75	0130		145.990			10/13/75	1200				.870
10/12/75	0200			.990		10/13/75	1230				.880
10/12/75	0230			.960		10/13/75	1300				.890
10/12/75	0300			.960		10/13/75	1330			146.020	
10/12/75	0330			.940		10/13/75	1400				.000
10/12/75	0400			.950		10/13/75	1430				.010
10/12/75	0430			.930		10/13/75	1500				.000
10/12/75	0500			.930		10/13/75	1530			145.990	
10/12/75	0530			.920		10/13/75	1600				.980
10/12/75	0600			.900		10/13/75	1630				.980
10/12/75	0630			.900		10/13/75	1700				.960
10/12/75	0700			.870		10/13/75	1730				.960
10/12/75	0730			.890		10/13/75	1800				.950
10/12/75	0800			.880		10/13/75	1830				.930
10/12/75	0830			.890		10/13/75	1900			145.930	
10/12/75	0900			.890		10/13/75	1930				.900
10/12/75	0930			.890		10/13/75	2000				.900
10/12/75	1000			.890		10/13/75	2030				.890
10/12/75	1030			.890		10/13/75	2100				.880
10/12/75	1100			.910		10/13/75	2130				.880
10/12/75	1130			.900		10/13/75	2200				.870
10/12/75	1200			.920		10/13/75	2230				.870
10/12/75	1230			.930		10/13/75	2300				.860
10/12/75	1300		145.920			10/13/75	2330				.870
10/12/75	1330			.940		10/14/75	0000				.870
10/12/75	1400			.930		10/14/75	0030				.880
10/12/75	1430			.930		10/14/75	0100				.880
10/12/75	1500			.930		10/14/75	0130				.880
10/12/75	1530			.940		10/14/75	0200				.890
10/12/75	1600			.930		10/14/75	0230				.710
10/12/75	1600		145.930			10/14/75	0300				.890
10/12/75	1630			.920		10/14/75	0330				.890
10/12/75	1700			.930		10/14/75	0400				.890
10/12/75	1730			.920		10/14/75	0430				.890
10/12/75	1800			.900		10/14/75	0500				.870
10/12/75	1830			.920		10/14/75	0530				.870

## RRGE 1 INTERFERENCE TEST DATA, RAFT RIVER VALLEY GEOTHERMAL FIELD, IDAHO

DATE / /	TIME / /	FLOW RATE / (GPH) /	DOWNHOLE / PRESSURE / (PSIA) /	WELL HEAD / PRESSURE / (PSIA) /	REMARKS	DATE / /	TIME / /	FLOW RATE / (GPH) /	DOWNHOLE / PRESSURE / (PSIA) /	WELL HEAD / PRESSURE / (PSIA) /	REMARKS
10/14/75	0600			.860							
10/14/75	0630			.850		10/15/75	1700			.740	
10/14/75	0700			.840		10/15/75	1730			.730	
10/14/75	0730			.810		10/15/75	1800			.710	
10/14/75	0800			.810		10/15/75	1830			.700	
						10/15/75	1900			.680	
10/14/75	0830			.790		10/15/75	1930			.660	
10/14/75	0900			.790		10/15/75	2000			.650	
10/14/75	0930			.780		10/15/75	2030			.650	
10/14/75	1000			.790		10/15/75	2100			.630	
10/14/75	1030			.790		10/15/75	2130			.610	
10/14/75	1100			.790		10/15/75	2200			.610	
10/14/75	1130			.790		10/15/75	2230			.600	
10/14/75	1200			.800		10/15/75	2300			.600	
10/14/75	1230			.800		10/15/75	2330			.610	
10/14/75	1300			.800		10/16/75	0000			.610	
10/14/75	1330			.810		10/16/75	0030			.620	
10/14/75	1400			.830		10/16/75	0100			.630	145
10/14/75	1430			.860		10/16/75	0130			.640	
10/14/75	1500			.840		10/16/75	0200			.670	
10/14/75	1530			.890		10/16/75	0230			.660	
10/14/75	1600			.890		10/16/75	0300			.680	
10/14/75	1630			.890		10/16/75	0330			.680	
10/14/75	1700			.880		10/16/75	0400			.690	
10/14/75	1730			.870		10/16/75	0430			.690	
10/14/75	1800			.850		10/16/75	0500			.700	
10/14/75	1830			.820		10/16/75	0530			.690	
10/14/75	1900			.800		10/16/75	0600			.690	
10/14/75	1930			.790		10/16/75	0630			.680	
10/14/75	2000			.770		10/16/75	0700			.670	
10/14/75	2030			.770		10/16/75	0730			.670	
10/14/75	2100			.760		10/16/75	0800			.640	
10/14/75	2130			.740		10/16/75	0830			.620	
10/14/75	2200		145	.750		10/16/75	0900			.650	
10/14/75	2230			.750		10/16/75	0930			.600	
10/14/75	2300			.740		10/16/75	1000				
10/14/75	2330			.740		10/16/75	1030				
10/15/75	0000			.750		10/16/75	1100				
10/15/75	0030			.750		10/16/75	1130				
10/15/75	0100			.760		10/16/75	1200				
10/15/75	0130			.760		10/16/75	1230			.790	
10/15/75	0200			.780		10/16/75	1300			.820	
10/15/75	0230			.780		10/16/75	1330			.850	
10/15/75	0300			.790		10/16/75	1400			.880	
10/15/75	0330			.790		10/16/75	1430			.880	RRGE 2 SHUT IN
10/15/75	0400			.790						.900	
10/15/75	0430			.790		10/16/75	1500			.940	
10/15/75	0500			.790		10/16/75	1530			.950	
10/15/75	0530			.780		10/16/75	1600			.930	
10/15/75	0600			.760		10/16/75	1630			.900	
10/15/75	0630			.760		10/16/75	1700			.880	
10/15/75	0700			.740		10/16/75	1730			.870	
10/15/75	0730			.730		10/16/75	1800			.880	
10/15/75	0800			.710		10/16/75	1830			.860	
10/15/75	0830			.700		10/16/75	1900			.930	
10/15/75	0900			.680		10/16/75	1930			.900	
10/15/75	0930			.680		10/16/75	2000			.870	
10/15/75	1000					10/16/75	2030			.850	
10/15/75	1030					10/16/75	2100			.850	
10/15/75	1100					10/16/75	2130			.820	
10/15/75	1130					10/16/75	2200			.810	
10/15/75	1200					10/16/75	2230			.810	
10/15/75	1230			.690		10/16/75	2300			.800	
10/15/75	1300			.710		10/16/75	2330			.790	
10/15/75	1330			.730		10/17/75	0000			.810	
10/15/75	1400			.750		10/17/75	0030			.800	
10/15/75	1430			.770		10/17/75	0100			.820	
10/15/75	1500			.770		10/17/75	0130			.840	
10/15/75	1530			.760		10/17/75	0200			.850	
10/15/75	1600			.760		10/17/75	0230			.880	
10/15/75	1630			.750		10/17/75	0300			.890	

## RRGE 1 INTERFERENCE TEST DATA, RAFT RIVER VALLEY GEOTHERMAL FIELD, IDAHO

DATE / /	TIME / /	FLOW RATE / (GPH) /	DOWNHOLE / PRESSURE / (PSIA) /	WELL HEAD / PRESSURE / (PSIA) /	REMARKS	DATE / /	TIME / /	FLOW RATE / (GPH) /	DOWNHOLE / PRESSURE / (PSIA) /	WELL HEAD / PRESSURE / (PSIA) /	REMARKS
10/17/75	0330			.910		10/18/75	1430				
10/17/75	0400			145.920		10/18/75	1500				.420
10/17/75	0430			.940		10/18/75	1530				.430
10/17/75	0500			.940		10/18/75	1600				.460
10/17/75	0530			.950		10/18/75	1630				.470
											.470
10/17/75	0600			.950		10/18/75	1700				.480
10/17/75	0630			.950		10/18/75	1730				.480
10/17/75	0700			.940		10/18/75	1800				.480
10/17/75	0730			.940		10/18/75	1830				.480
10/17/75	0800			.930		10/18/75	1900				.470
10/17/75	0830			.920		10/18/75	1930				.460
10/17/75	0900			.920		10/18/75	2000				.430
10/17/75	0930			.920		10/18/75	2030				.410
10/17/75	1000			.920		10/18/75	2100				.400
10/17/75	1030			.920		10/18/75	2130				.370
10/17/75	1100			.930		10/18/75	2200				.370
10/17/75	1130			.930		10/18/75	2230				.360
10/17/75	1200			.950		10/18/75	2300				.340
10/17/75	1230			.960		10/18/75	2330				.350
10/17/75	1300			.980		10/19/75	0000				.360
10/17/75	1330			146.000		10/19/75	0030				.350
10/17/75	1400			.040		10/19/75	0100				.380
10/17/75	1430			.060		10/19/75	0130				.400
10/17/75	1500			.080		10/19/75	0200				.410
10/17/75	1530			.100		10/19/75	0230				.450
10/17/75	1600			.120		10/19/75	0300				.460
10/17/75	1630			.120		10/19/75	0330				.490
10/17/75	1700			.130		10/19/75	0400				.510
10/17/75	1730			.130		10/19/75	0430				.550
10/17/75	1800			.130		10/19/75	0500				.570
10/17/75	1830			.120		10/19/75	0530				.590
10/17/75	1900			.100		10/19/75	0600				.610
10/17/75	1930			.080		10/19/75	0630				.620
10/17/75	2000			.040		10/19/75	0700				.630
10/17/75	2030			.050		10/19/75	0730				.630
10/17/75	2100			.020		10/19/75	0800				.630
10/17/75	2130			.000		10/19/75	0830				.620
10/17/75	2200			.010		10/19/75	0900				.620
10/17/75	2230			.000		10/19/75	0930				.620
10/17/75	2300			145.990		10/19/75	1000				146.620
10/17/75	2330			146.800		10/19/75	1030				.620
10/18/75	0000			.000		10/19/75	1100				.620
10/18/75	0030			.010		10/19/75	1130				.640
10/18/75	0100			.030		10/19/75	1200				.660
10/18/75	0130			.050		10/19/75	1230				.680
10/18/75	0200			.070		10/19/75	1300				.700
10/18/75	0230			.090		10/19/75	1330				.770
10/18/75	0300			.120		10/19/75	1400				.770
10/18/75	0330			.150		10/19/75	1430				.800
10/18/75	0400			.180		10/19/75	1500				.820
10/18/75	0430			.200		10/19/75	1530				.830
10/18/75	0500			.210		10/19/75	1600				.840
10/18/75	0530			.230		10/19/75	1630				.850
10/18/75	0600			.240		10/19/75	1700				.850
10/18/75	0630			.260		10/19/75	1730				.850
10/18/75	0700			146.250		10/19/75	1800				.850
10/18/75	0730			.260		10/19/75	1830				.850
10/18/75	0800			.250		10/19/75	1900				.830
10/18/75	0830			.250		10/19/75	1930				.820
10/18/75	0900			.230		10/19/75	2000				.800
10/18/75	0930			.240		10/19/75	2030				.770
10/18/75	1000			.240		10/19/75	2100				.680
10/18/75	1030			.250		10/19/75	2130				.720
10/18/75	1100			.250		10/19/75	2200				.700
10/18/75	1130			.270		10/19/75	2230				.700
10/18/75	1200			.270		10/19/75	2300				.690
10/18/75	1230			.300		10/19/75	2330				.670
10/18/75	1300			.330		10/20/75	0000				.680
10/18/75	1330			.360		10/20/75	0030				.670
10/18/75	1400			.390		10/20/75	0100				.680

## RRGE 1 INTERFERENCE TEST DATA, RAFT RIVER VALLEY GEOTHERMAL FIELD, IDAHO

DATE / /	TIME /	FLOW RATE / (GPM) /	DOWNHOLE / PRESSURE / (PSIA) /	WELL HEAD / PRESSURE / (PSIA) /	REMARKS	DATE / /	TIME /	FLOW RATE / (GPM) /	DOWNHOLE / PRESSURE / (PSIA) /	WELL HEAD / PRESSURE / (PSIA) /	REMARKS
10/20/75	0130					10/21/75	1230				
10/20/75	0200			.690		10/21/75	1300			.180	
10/20/75	0230			.710		10/21/75	1330			.190	
10/20/75	0300			.730		10/21/75	1400			.210	
10/20/75	0330			.760		10/21/75	1430			.220	
				.780							
10/20/75	0400			.810		10/21/75	1500			.240	
10/20/75	0430			.830		10/21/75	1530			.260	
10/20/75	0500			.870		10/21/75	1600			147.280	
10/20/75	0530			.890		10/21/75	1630			.290	
10/20/75	0600			.910		10/21/75	1700			.310	
10/20/75	0630			.930		10/21/75	1730			.320	
10/20/75	0700			.940		10/21/75	1800			.330	
10/20/75	0730			.950		10/21/75	1830			.330	
10/20/75	0800			.950		10/21/75	1900			.340	
10/20/75	0830			.950		10/21/75	1930			.320	
10/20/75	0900			.950		10/21/75	2000			.310	
10/20/75	0930			.940		10/21/75	2030			.290	
10/20/75	1000			.940		10/21/75	2100			.270	
10/20/75	1030			.940		10/21/75	2130			.240	
10/20/75	1100					10/21/75	2200			.220	
10/20/75	1130			.960		10/21/75	2230			.210	
10/20/75	1200			.970		10/21/75	2300			.190	
10/20/75	1230			.970		10/21/75	2330			.170	
10/20/75	1300			146.970		10/22/75	0000			.170	
10/20/75	1330			.980		10/22/75	0030			.160	
10/20/75	1400			.990		10/22/75	0100			.160	
10/20/75	1430			147.000		10/22/75	0130			.150	
10/20/75	1500			.020		10/22/75	0200			.150	
10/20/75	1530			.040		10/22/75	0230			.160	
10/20/75	1600			.070		10/22/75	0300			.170	
10/20/75	1630			.080		10/22/75	0330			.210	
10/20/75	1700			.090		10/22/75	0400			.230	
10/20/75	1730			.100		10/22/75	0430			.260	
10/20/75	1800			.110		10/22/75	0500			.280	
10/20/75	1830			.110		10/22/75	0530			.310	
10/20/75	1900			.100		10/22/75	0600			.330	
10/20/75	1930			.090		10/22/75	0630			.350	
10/20/75	2000			.070		10/22/75	0700			.370	
10/20/75	2030			.040		10/22/75	0730			.390	
10/20/75	2100			.030		10/22/75	0800			.390	
10/20/75	2130			.010		10/22/75	0830			.400	
10/20/75	2200			.000		10/22/75	0900			.400	
10/20/75	2230			146.990		10/22/75	0930			.400	
10/20/75	2300			.990		10/22/75	1000			.420	
10/20/75	2330			.950		10/22/75	1030			.420	
10/21/75	0000			.950		10/22/75	1100			.410	
10/21/75	0030			.910		10/22/75	1130			.400	
10/21/75	0100			.940		10/22/75	1200			.390	
10/21/75	0130			.940		10/22/75	1230			.390	
10/21/75	0200			.960		10/22/75	1300			.380	
10/21/75	0230			.970		10/22/75	1330			.380	
10/21/75	0300			147.000		10/22/75	1400			.390	
10/21/75	0330			.010		10/22/75	1430			.400	
10/21/75	0400			.040		10/22/75	1500			.420	
10/21/75	0430			.060		10/22/75	1530			.430	
10/21/75	0500			.100		10/22/75	1600			.450	
10/21/75	0530			.060		10/22/75	1630			.460	
10/21/75	0600			.150		10/22/75	1700			.480	
10/21/75	0630			.170		10/22/75	1730			.510	
10/21/75	0700			.190		10/22/75	1800			.530	
10/21/75	0730			.200		10/22/75	1830			.540	
10/21/75	0800			.190		10/22/75	1900			147.540	
10/21/75	0830					10/22/75	1930			.540	
10/21/75	0900					10/22/75	2000			.540	
10/21/75	0930					10/22/75	2030			.530	
10/21/75	1000			.200		10/22/75	2100			.540	
10/21/75	1030			.190		10/22/75	2130			.510	
10/21/75	1100			.170		10/22/75	2200			.500	
10/21/75	1130			.170		10/22/75	2230			.480	
10/21/75	1200			.170		10/22/75	2300			.470	

## RRGE 1 INTERFERENCE TEST DATA, RAFT RIVER VALLEY GEOTHERMAL FIELD, IDAHO

DATE / /	TIME / /	/FLOW RATE/ (GPM) /	DOWNHOLE/ PRESSURE / (PSIA) /	WELL HEAD/ PRESSURE / (PSIA) /	REMARKS	DATE / /	TIME / /	/FLOW RATE/ (GPM) /	DOWNHOLE/ PRESSURE / (PSIA) /	WELL HEAD/ PRESSURE / (PSIA) /	REMARKS
10/22/75	2330			.450		10/24/75	1030				
10/23/75	0000			.450		10/24/75	1100			.860	
10/23/75	0030			.440		10/24/75	1130			.870	
10/23/75	0100			.430		10/24/75	1200			.860	
10/23/75	0130			.430		10/24/75	1230			.860	
10/23/75	0200			.430		10/24/75	1300			.880	
10/23/75	0230			.430		10/24/75	1330			.880	
10/23/75	0300			.430		10/24/75	1400			.870	
10/23/75	0330			.450		10/24/75	1430			.870	
10/23/75	0400			.450		10/24/75	1500			.870	
10/23/75	0430			.480		10/24/75	1530			.870	
10/23/75	0500			.500		10/24/75	1600			.870	
10/23/75	0530			.530		10/24/75	1630			.870	
10/23/75	0600			.550		10/24/75	1700			.870	
10/23/75	0630			.560		10/24/75	1730			.860	
10/23/75	0700			.580		10/24/75	1800			.890	
10/23/75	0730			.600		10/24/75	1830			.920	
10/23/75	0800			.620		10/24/75	1900			.930	
10/23/75	0830			.620		10/24/75	1930			.940	
10/23/75	0900			.630		10/24/75	2000			.940	
10/23/75	0930			.640		10/24/75	2030			.950	
10/23/75	1000			.640		10/24/75	2100			.950	
10/23/75	1030			.640		10/24/75	2130			.950	
10/23/75	1100			.640		10/24/75	2200			.940	
10/23/75	1130			.640		10/24/75	2230			.940	
10/23/75	1200			.640		10/24/75	2300			.930	
10/23/75	1230			.640		10/24/75	2330			.910	
10/23/75	1300			.630		10/25/75	0000			.910	
10/23/75	1330			.630		10/25/75	0030			.880	
10/23/75	1400		147.630			10/25/75	0100			147.870	
10/23/75	1430			.630		10/25/75	0130			.870	
10/23/75	1500			.590		10/25/75	0200			.850	
10/23/75	1530			.640		10/25/75	0230			.850	
10/23/75	1600			.660		10/25/75	0300			.840	
10/23/75	1630			.660		10/25/75	0330			.840	
10/23/75	1700			.680		10/25/75	0400			.850	
10/23/75	1730			.690		10/25/75	0430			.850	
10/23/75	1800			.710		10/25/75	0500			.860	
10/23/75	1830			.720		10/25/75	0530			.870	
10/23/75	1900			.730		10/25/75	0600			.880	
10/23/75	1930			.740		10/25/75	0630			.900	
10/23/75	2000			.740		10/25/75	0700			.910	
10/23/75	2030			.750		10/25/75	0730			.930	
10/23/75	2100			.740		10/25/75	0800			.940	
10/23/75	2130			.740		10/25/75	0830			.960	
10/23/75	2200		147.740			10/25/75	0900			.970	
10/23/75	2230			.720		10/25/75	0930			.970	
10/23/75	2300			.700		10/25/75	1030			.800	
10/23/75	2330			.690		10/25/75	1000			148.000	
10/24/75	0000			.680		10/25/75	1100			.010	
10/24/75	0030			.660		10/25/75	1130			.010	
10/24/75	0100			.650		10/25/75	1200			.020	
10/24/75	0130			.640		10/25/75	1230			.010	
10/24/75	0200			.630		10/25/75	1300			.020	
10/24/75	0230			.630		10/25/75	1330			.010	
10/24/75	0300			.630		10/25/75	1400			.010	
10/24/75	0330			.640		10/25/75	1430			.020	
10/24/75	0400			.650		10/25/75	1500			.000	
10/24/75	0430			.670		10/25/75	1530			.010	
10/24/75	0500			.670		10/25/75	1600			.000	
10/24/75	0530					10/25/75	1630			.010	
10/24/75	0600					10/25/75	1700			.000	
10/24/75	0630					10/25/75	1730			.020	
10/24/75	0700					10/25/75	1800			.020	
10/24/75	0730					10/25/75	1830			.040	
10/24/75	0800					10/25/75	1900			.040	
10/24/75	0830					10/25/75	1930			.050	
10/24/75	0900					10/25/75	2000			.050	
10/24/75	0930					10/25/75	2030			.070	
10/24/75	1000					10/25/75	2100			.060	



## RRGE 1 INTERFERENCE TEST DATA, RAFT RIVER VALLEY GEOTHERMAL FIELD, IDAHO

DATE / /	TIME / /	FLOW RATE / (GPM) /	DOWNHOLE / PRESSURE / (PSIA) /	WELL HEAD / PRESSURE / (PSIA) /	REMARKS	DATE / /	TIME / /	FLOW RATE / (GPM) /	DOWNHOLE / PRESSURE / (PSIA) /	WELL HEAD / PRESSURE / (PSIA) /	REMARKS
10/25/75	2130			.080							
10/25/75	2200			.040		10/27/75	0830			.190	
10/25/75	2230					10/27/75	0900			.206	
10/25/75	2300			148.080		10/27/75	0930			.233	
10/25/75	2330			.070		10/27/75	1000			.239	
						10/27/75	1030			.250	
10/26/75	0000			.060		10/27/75	1100			.277	
10/26/75	0030			.023		10/27/75	1130			.277	
10/26/75	0100			.007		10/27/75	1200			.287	
10/26/75	0130			.001		10/27/75	1230			.298	
10/26/75	0200			147.985		10/27/75	1300			.320	
10/26/75	0230			.905		10/27/75	1330			.331	
10/26/75	0300			.969		10/27/75	1400			.325	
10/26/75	0330			.969		10/27/75	1430			.336	
10/26/75	0400			147.958		10/27/75	1500			.336	
10/26/75	0430			.963		10/27/75	1530			.325	
10/26/75	0500			.958		10/27/75	1600			.331	
10/26/75	0530			.963		10/27/75	1630			.320	
10/26/75	0600			.963		10/27/75	1700			.336	
10/26/75	0630			.978		10/27/75	1730			.320	
10/26/75	0700			.990		10/27/75	1800			.325	
10/26/75	0730			.996		10/27/75	1830			.325	
10/26/75	0800			148.007		10/27/75	1900			.325	
10/26/75	0830			.034		10/27/75	1930			.325	
10/26/75	0900			.044		10/27/75	2000			.336	
10/26/75	0930			.061		10/27/75	2030			.336	
10/26/75	1000			.071		10/27/75	2100			.347	
10/26/75	1030			.088		10/27/75	2130			.347	
10/26/75	1100			.098		10/27/75	2200			.363	
10/26/75	1130			.109		10/27/75	2230			.368	
10/26/75	1200			.115		10/27/75	2300			.374	
10/26/75	1230			.131		10/27/75	2330			.385	
10/26/75	1300			.136		10/28/75	0000			.385	
10/26/75	1330			.142		10/28/75	0030			.401	
10/26/75	1400			.147		10/28/75	0100			.396	
10/26/75	1430			.147		10/28/75	0130			.401	
10/26/75	1500			.142		10/28/75	0200			.401	
10/26/75	1530			.147		10/28/75	0230			.396	
10/26/75	1600			.142		10/28/75	0300			.396	
10/26/75	1630			.147		10/28/75	0330			.385	
10/26/75	1700			.142		10/28/75	0400			.385	
10/26/75	1730			.147		10/28/75	0430			.380	
10/26/75	1800			.152		10/28/75	0500			.368	
10/26/75	1830			.152		10/28/75	0530			.363	
10/26/75	1900			.159		10/28/75	0600			.358	
10/26/75	1930			.174		10/28/75	0630			.358	
10/26/75	2000			.174		10/28/75	0700			.347	
10/26/75	2030			.185		10/28/75	0730			.347	
10/26/75	2100			.185		10/28/75	0800			.358	
10/26/75	2130			.201		10/28/75	0830			.358	
10/26/75	2200			.201		10/28/75	0900			.374	
10/26/75	2230			.206		10/28/75	0930			.385	
10/26/75	2300			.201		10/28/75	1000			148.406	
10/26/75	2330			.206		10/28/75	1030			.423	
10/27/75	0000			.201		10/28/75	1100			.444	
10/27/75	0030			.206		10/28/75	1130			.477	
10/27/75	0100			.201		10/28/75	1200			.504	
10/27/75	0130			.190		10/28/75	1230			.531	
10/27/75	0200			.185		10/28/75	1300			.547	
10/27/75	0230			.174		10/28/75	1330			.563	
10/27/75	0300			.169		10/28/75	1400			.568	
10/27/75	0330			.158		10/28/75	1430			.574	
10/27/75	0400			.158		10/28/75	1500			.585	
10/27/75	0430			.152		10/28/75	1530			.579	
10/27/75	0500			.147		10/28/75	1600			.579	
10/27/75	0530			.147		10/28/75	1630			.552	
10/27/75	0600			.152		10/28/75	1700			.536	
10/27/75	0630			.147		10/28/75	1730			.525	
10/27/75	0700			148.163		10/28/75	1800			.509	
10/27/75	0730			.169		10/28/75	1830			.487	
10/27/75	0800			.179		10/28/75	1900			.477	

## RRGE 1 INTERFERENCE TEST DATA, RAFT RIVER VALLEY GEOTHERMAL FIELD, IDAHO

DATE / /	TIME / /	FLOW RATE / (GPH) /	DOWNHOLE / PRESSURE / (PSIA) /	WELL HEAD / PRESSURE / (PSIA) /	REMARKS	DATE / /	TIME / /	FLOW RATE / (GPH) /	DOWNHOLE / PRESSURE / (PSIA) /	WELL HEAD / PRESSURE / (PSIA) /	REMARKS
10/28/75	1930			.471		10/30/75	0630			.612	
10/28/75	2000			.482		10/30/75	0700			.601	
10/28/75	2030			.471		10/30/75	0730			.585	
10/28/75	2100			.482		10/30/75	0800			.574	
10/28/75	2130			.482		10/30/75	0830			.579	
10/28/75	2200			.493		10/30/75	0900			.590	
10/28/75	2230			.504		10/30/75	0930			.585	
10/28/75	2300			.504		10/30/75	1000			.590	
10/28/75	2330			.518		10/30/75	1030			.601	
10/29/75	0000			.525		10/30/75	1100			.628	
10/29/75	0030			.547		10/30/75	1130			.649	
10/29/75	0100			.547			1130			.649	POWER OUT.
10/29/75	0130			.563		10/30/75	2330			.752	
10/29/75	0200			.563		10/31/75	0000			.757	
10/29/75	0230			.568		10/31/75	0030			.817	
10/29/75	0300			.574		10/31/75	0100			.839	
10/29/75	0330			.568		10/31/75	0130			.860	
10/29/75	0400			.568		10/31/75	0200			.882	
10/29/75	0430			.558		10/31/75	0230			.898	
10/29/75	0500			.552		10/31/75	0300			148.898	
10/29/75	0530					10/31/75	0330			.914	
10/29/75	0600			.520		10/31/75	0400			.909	
10/29/75	0630			.520		10/31/75	0430			.903	
10/29/75	0700			.504		10/31/75	0500			.898	
10/29/75	0730			.504		10/31/75	0530			.893	
10/29/75	0800			.493		10/31/75	0600			.887	
10/29/75	0830			.493		10/31/75	0630			.866	
10/29/75	0900			.493		10/31/75	0700			.849	
10/29/75	0930			.504		10/31/75	0730			.833	
10/29/75	1000			.509		10/31/75	0800			.828	
10/29/75	1030			.531		10/31/75	0830			.812	
10/29/75	1100			.547		10/31/75	1300			149.384	
10/29/75	1130			.563		10/31/75	1330			.373	
10/29/75	1200			.585		10/31/75	1400			.352	
10/29/75	1230			.606		10/31/75	1430			.330	
10/29/75	1300		148.633			10/31/75	1500			.314	
10/29/75	1330			.655		10/31/75	1530			.292	
10/29/75	1400			.671		10/31/75	1600			.276	
10/29/75	1430			.687		10/31/75	1630			.249	
10/29/75	1500			.682		10/31/75	1700			.222	
10/29/75	1530			.676		10/31/75	1730			.187	
10/29/75	1600			.671		10/31/75	1800			.173	
10/29/75	1630			.666		10/31/75	1830			.065	
10/29/75	1700			.628		10/31/75	1900			.183	
10/29/75	1730			.606		10/31/75	1930			.076	
10/29/75	1800			.585		10/31/75	2000			.071	
10/29/75	1830			.574		10/31/75	2030			.017	
10/29/75	1900			.579		10/31/75	2100			.006	
10/29/75	1930			.568		10/31/75	2130			148.979	
10/29/75	2000			.558		10/31/75	2200			.984	
10/29/75	2030			.552		10/31/75	2230			149.017	
10/29/75	2100			.568		10/31/75	2300			148.979	
10/29/75	2130			.563		10/31/75	2330			149.022	
10/29/75	2200			.574		11/01/75	0000			148.990	
10/29/75	2230			.579		11/01/75	0030			149.049	
10/29/75	2300			.595		11/01/75	0100			.038	
10/29/75	2330			.595							
10/30/75	0000			.622							
10/30/75	0030			.633							
10/30/75	0100			.649							
10/30/75	0130			.660							
10/30/75	0200			.676							
10/30/75	0230			.671							
10/30/75	0300			.671							
10/30/75	0330			.676							
10/30/75	0400			.687							
10/30/75	0430			.666							
10/30/75	0500			.649							
10/30/75	0530			.639							
10/30/75	0600			.633							

END OF DATA