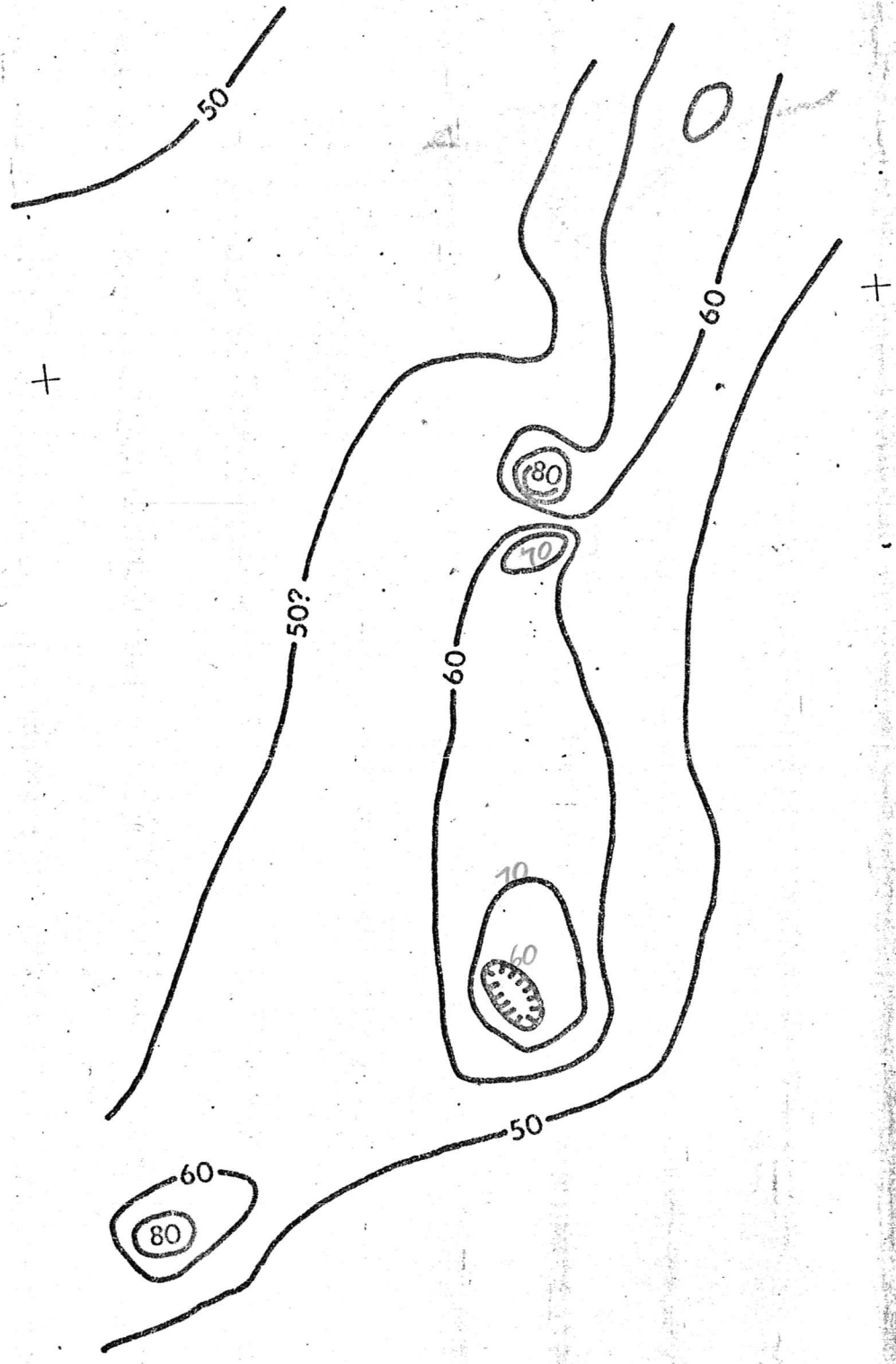
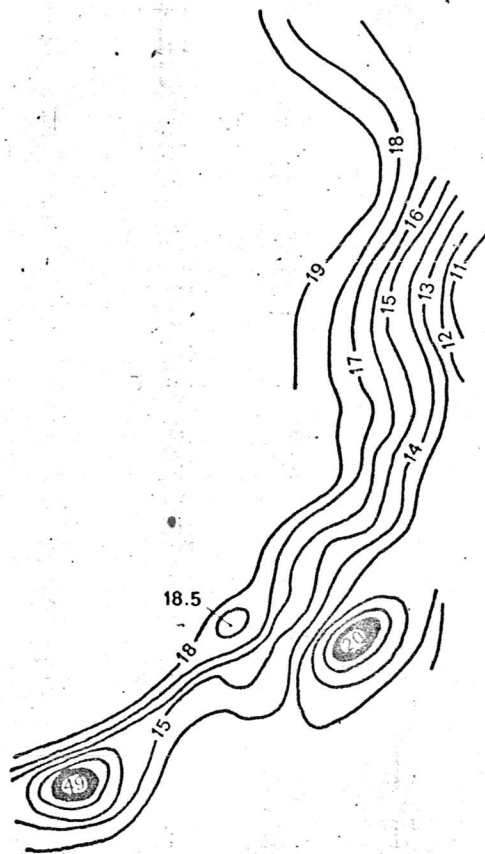


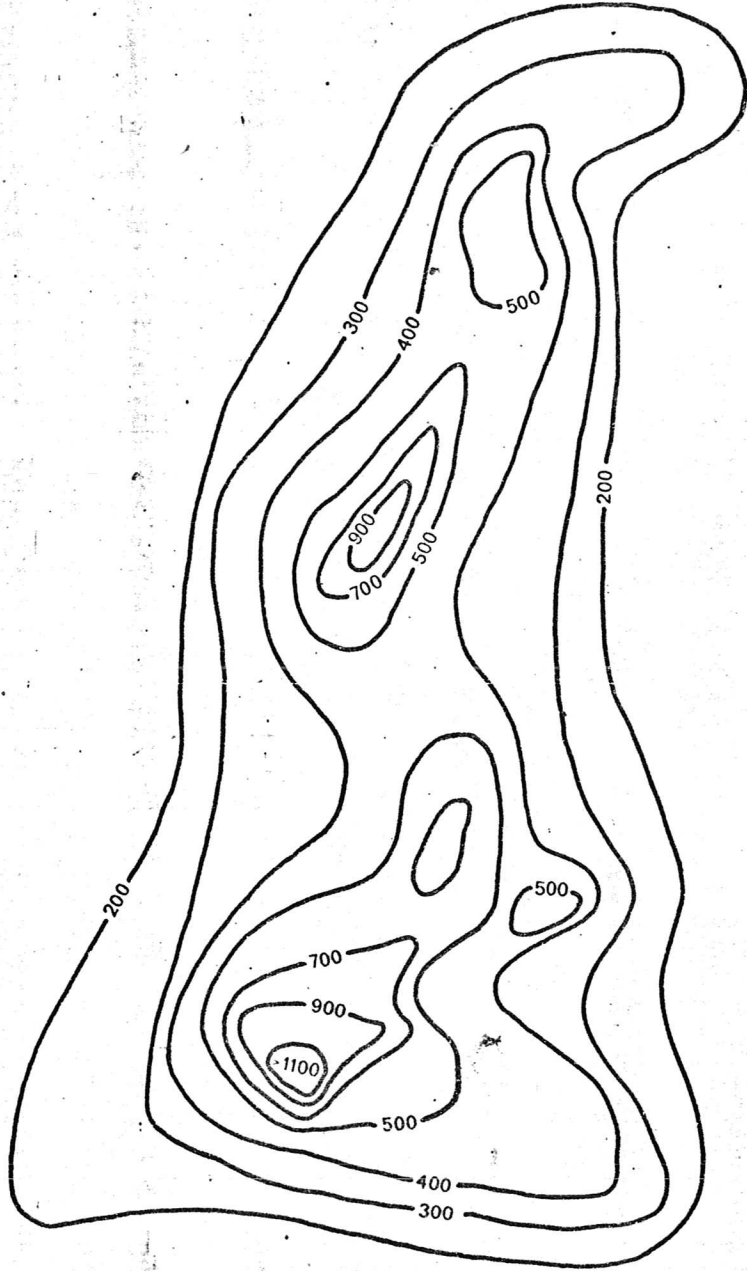
67L07900 0565



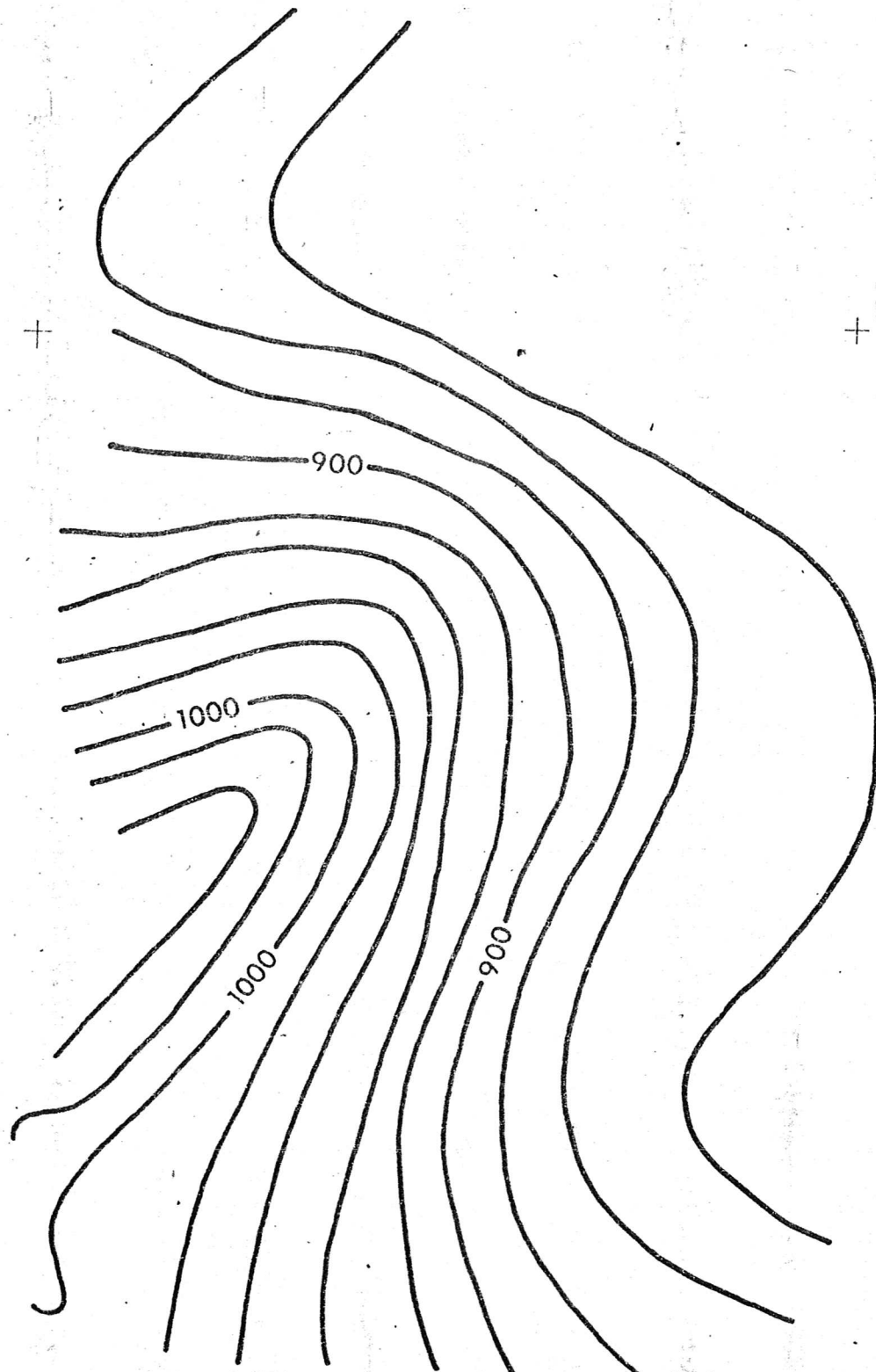
WELL TEMPERATURE °F



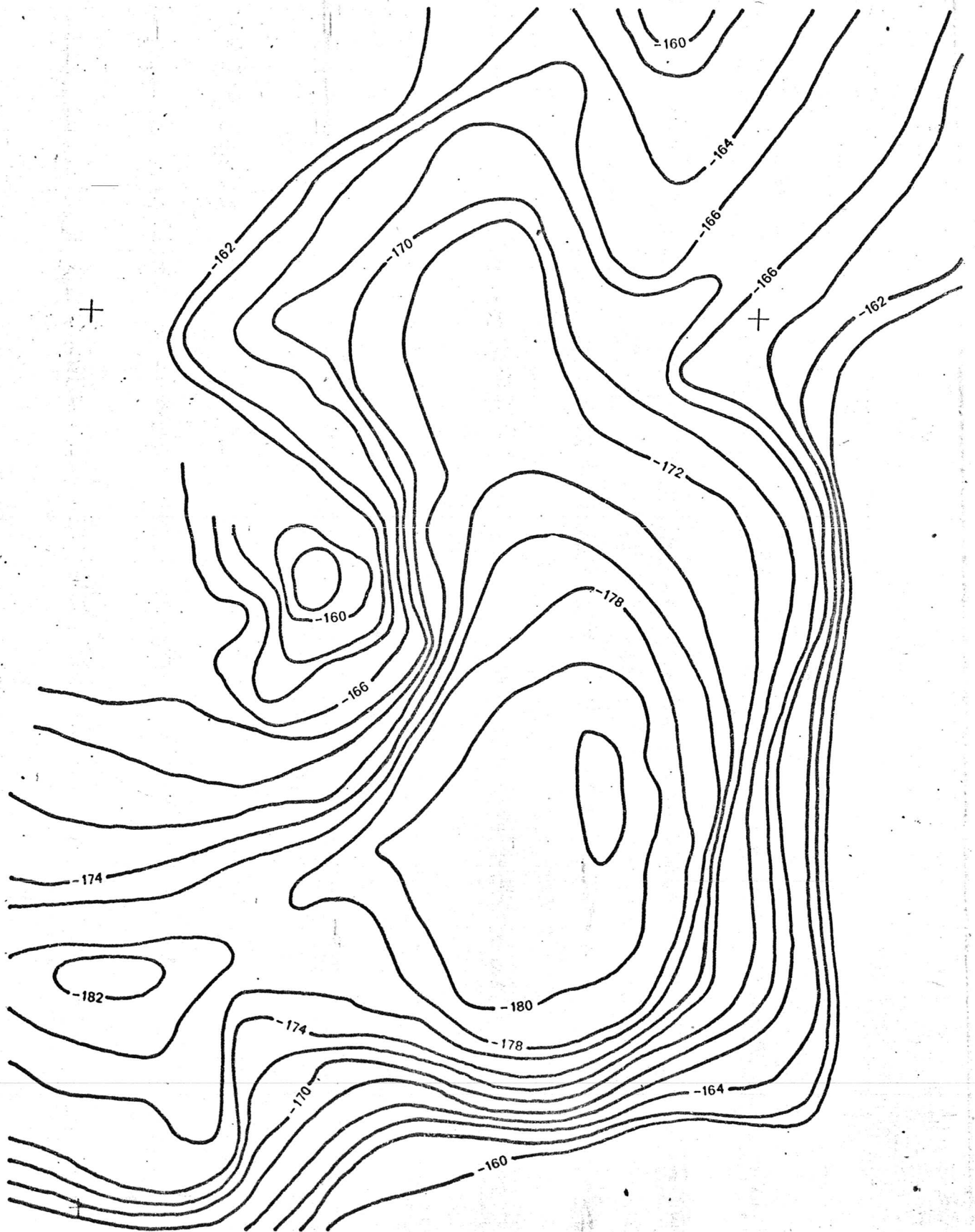
SHALLOW GROUND TEMPERATURE
based on 37 holes, 7 to 10 feet deep.
Aug. 30, 1972 - Temp Range 11° - 49°C.



CHLORIDES: parts per million from
50 wells



MAGNETIC CONTOURS



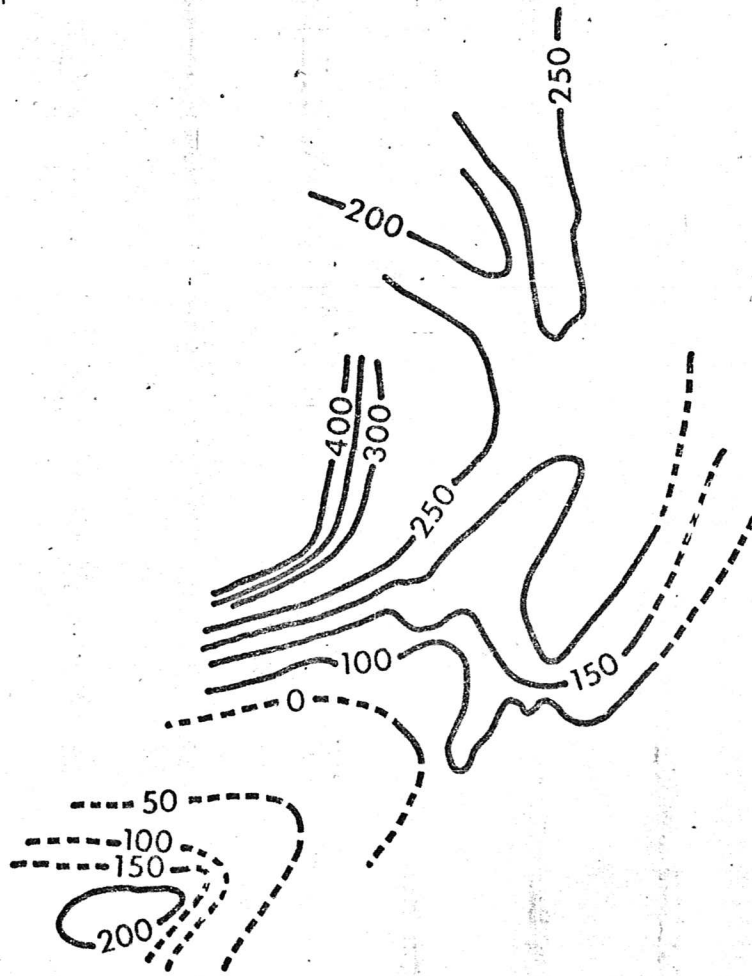
GRAVITY CONTOURS - int. 2 milligals



SILICA: parts per million from 50 wells

+

+



+

SELF POTENTIAL : based on 35 miles of traverse - contour interval : 50 millivolt

